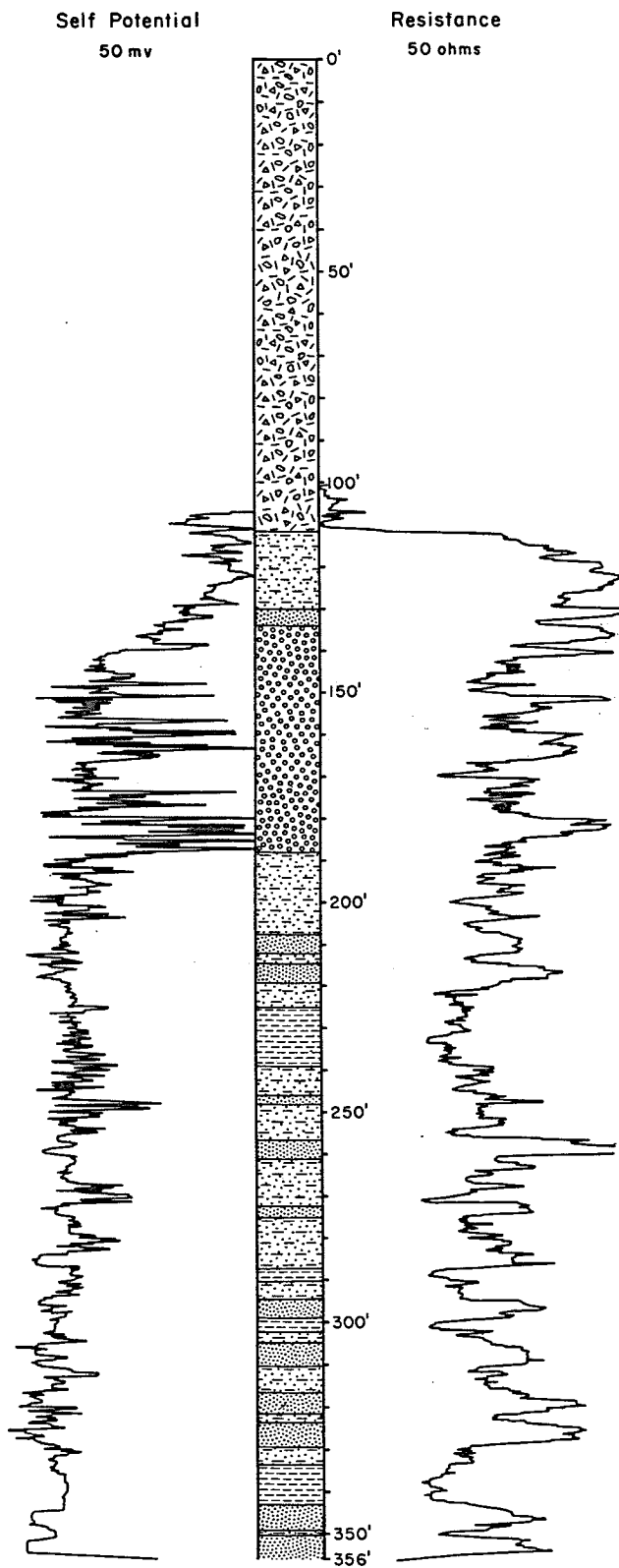


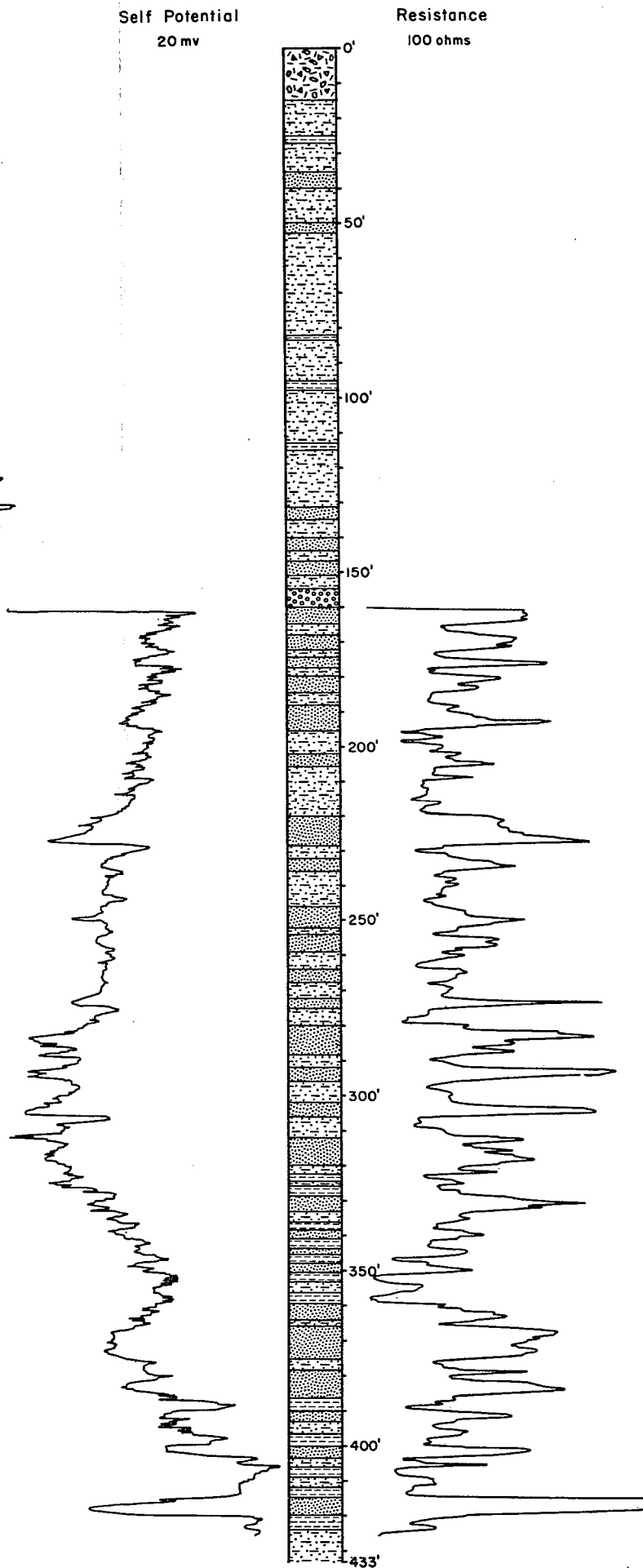
TOWN OF DIGBY
TEST WELL 1
(INDEX NO. 24)
21 A 12 B 97 O

Bedrock: Wolfville Formation



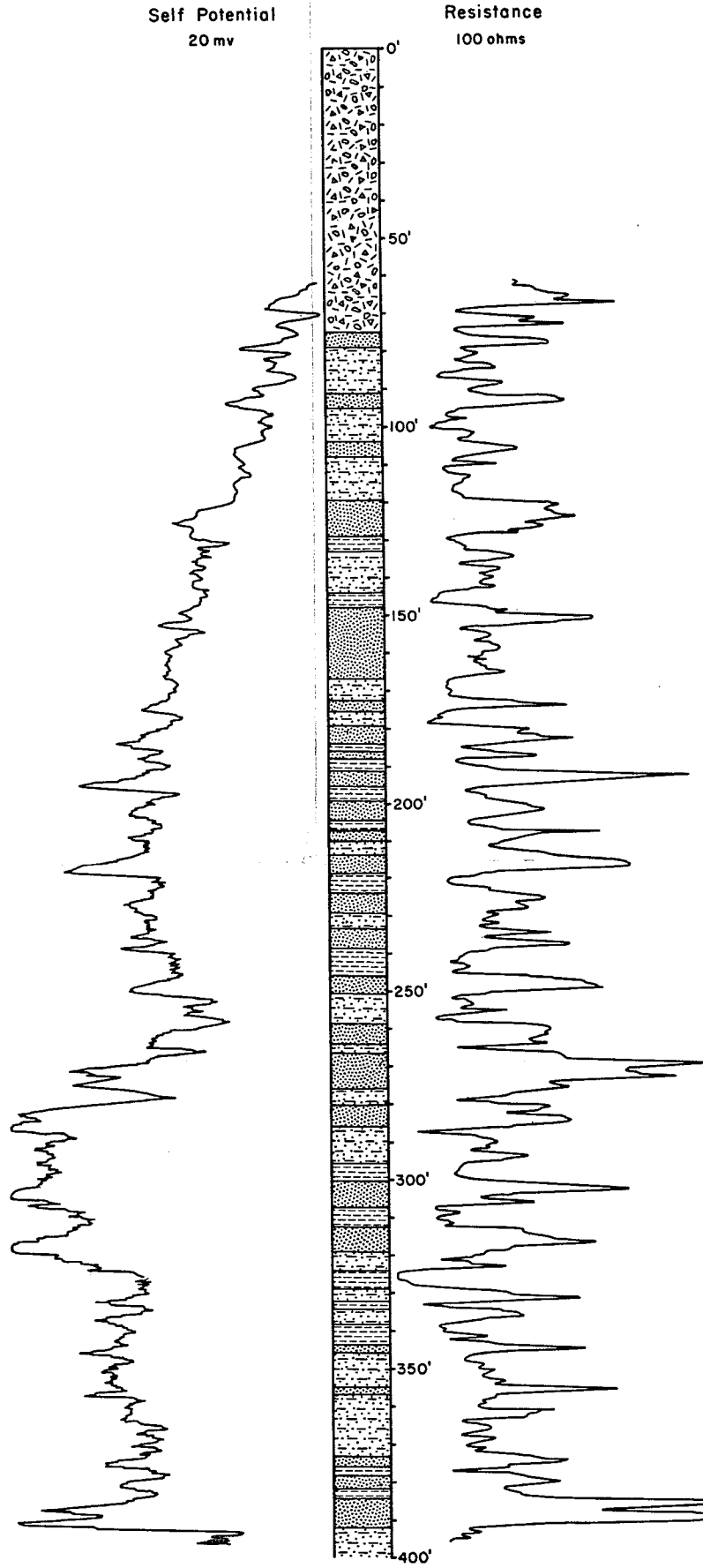
TOWN OF DIGBY
TEST WELL 2
(INDEX NO. 26)
21 A 12 C 2 K

Bedrock: Wolfville Formation



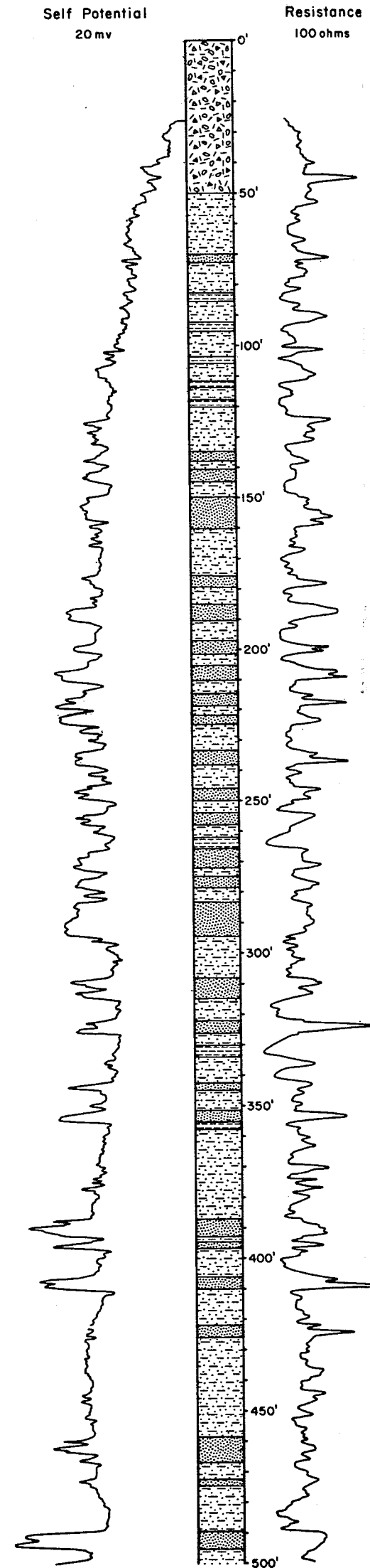
TOWN OF DIGBY
TEST WELL 3
(INDEX NO. 27)
21 A 12 C 2 G

Bedrock: Wolfville Formation



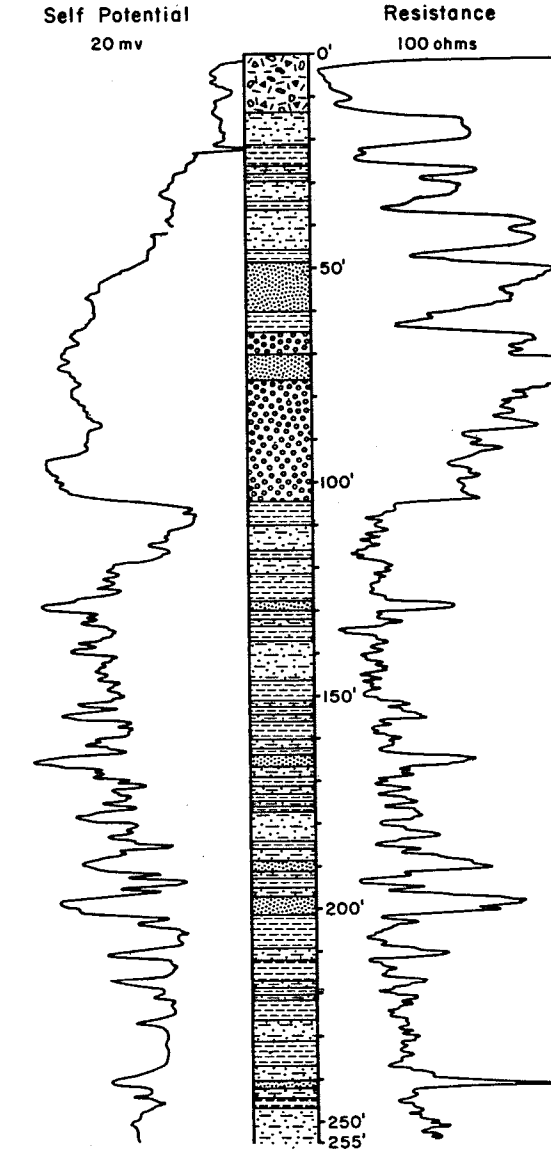
N. S. DEPT. OF MINES
TEST HOLE 314
21 A 12 B 93 K

Bedrock: Wolfville Formation



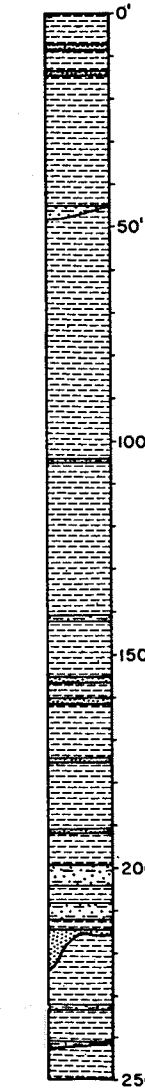
N. S. DEPT. OF MINES
TEST HOLE 99
21 A 12 B 97 L

Bedrock: Wolfville Formation



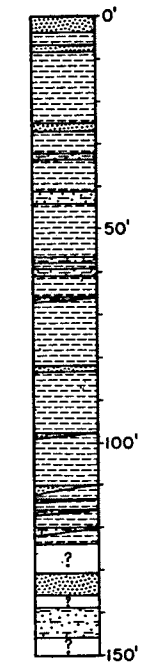
MEASURED SECTION 1
21 A 12 B 64 K to H

Bedrock: Blomidon Formation
Note: Section measured by G. de V. Klein between July 2 and 5, 1958. Graphic log has been modified from Klein (1960, p.199).



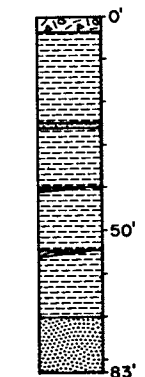
MEASURED SECTION 2
21 A 12 B 65 C to H

Bedrock: Blomidon Formation
(P. C. Trescott believes the units from 131'-150' are the upper beds of the Wolfville Formation.)
Note: Section measured by G. de V. Klein on July 7, 1958. Graphic log has been modified from Klein (1960, p.204).



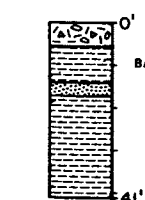
MEASURED SECTION 3
21 A 12 D 64 D

Bedrock: Blomidon Formation 3'-70'
Wolfville Formation 70'-83'
Note: Section measured by P. C. Trescott on July 18, 1968.



MEASURED SECTION 4
21 A 13 A 24 L

Bedrock: Blomidon Formation
Note: Section measured by P. C. Trescott on July 23, 1968.



LEGEND

- GLACIAL TILL
- CONGLOMERATE
- WELL SORTED, CLEAN SANDSTONE
- POORLY SORTED, SILTY SANDSTONE
- SILTSTONE AND CLAYSTONE

APPENDIX A.
GRAPHIC LOGS
OF
TEST HOLES, WELLS,
AND MEASURED SECTIONS
IN THE
WESTERN ANNAPOLIS VALLEY