

Mersey River Wind Farm

Overview of Field Assessed Transects



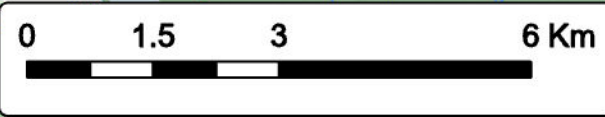
MERSEY RIVER WIND

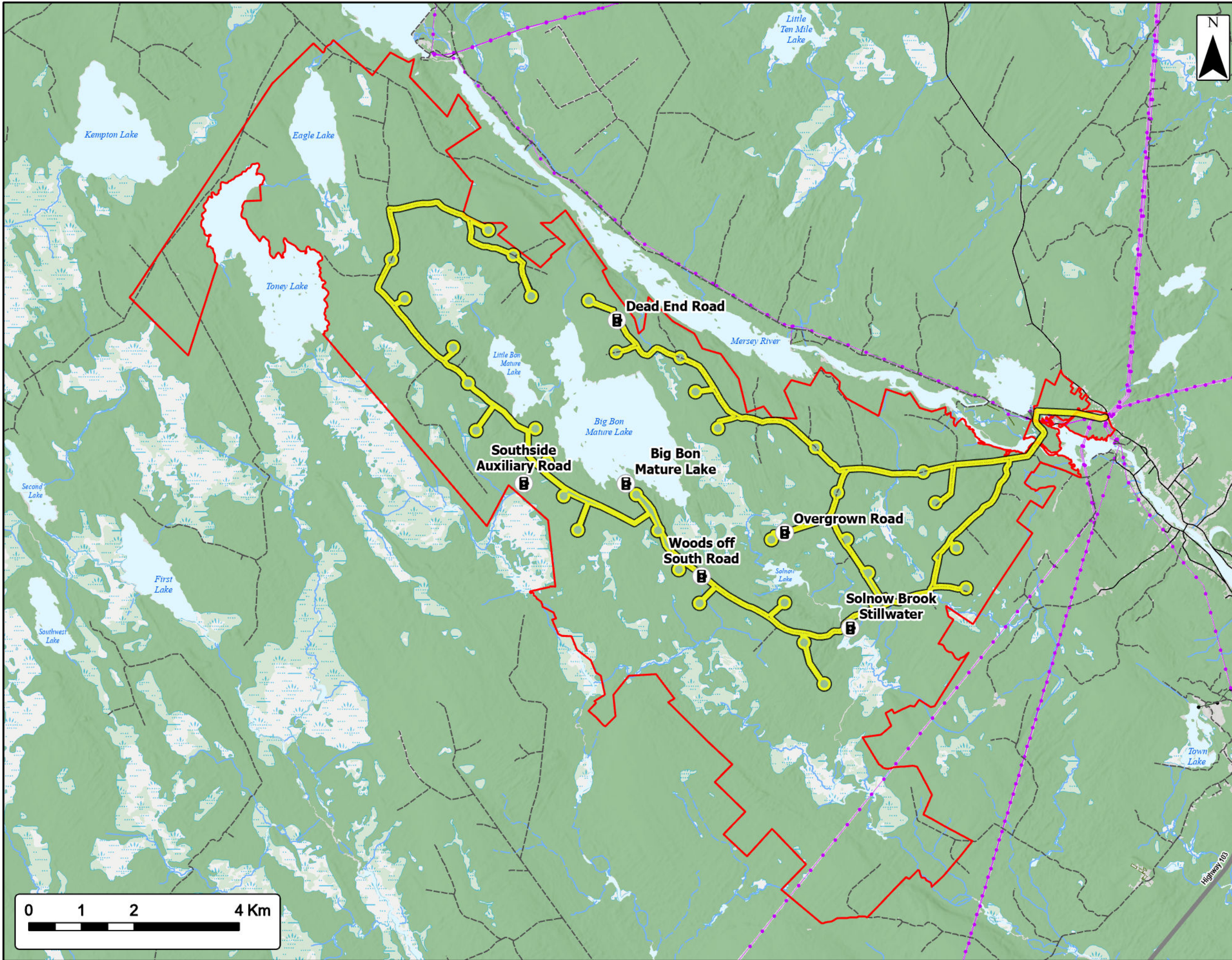
Assessment Area	
Moose Waypoint	
Pellet Survey Transect	
Vegetation Transect	
Winter Tracking Survey Transect	
Regional Assessment Area (Moose Analysis)	
Transportation	
Highway	
Road	
Unpaved Road	
Utilities (line)	
Existing Pipeline	
Existing Transmission Lines	
Water Features	
Mapped Stream	
Mapped Indefinite Stream	
Mapped Lakes and Rivers	
Mapped Wet Area	



Coordinate System: NAD83 UTM Zone 20N Sources: Esri Basemaps, GeoNOVA, SNSIS, NRCAN, NSNRR, ACCDC, IBA Canada

Date:	Jan 2023	Project #:	21-7833
Scale:	1:90,000	Drawing #:	7.21
Drawn By:	P. Opra		
Checked By:	M. Savelle		





Mersey River Wind Farm
Overview of Trail Camera Locations



MERSEY RIVER WIND

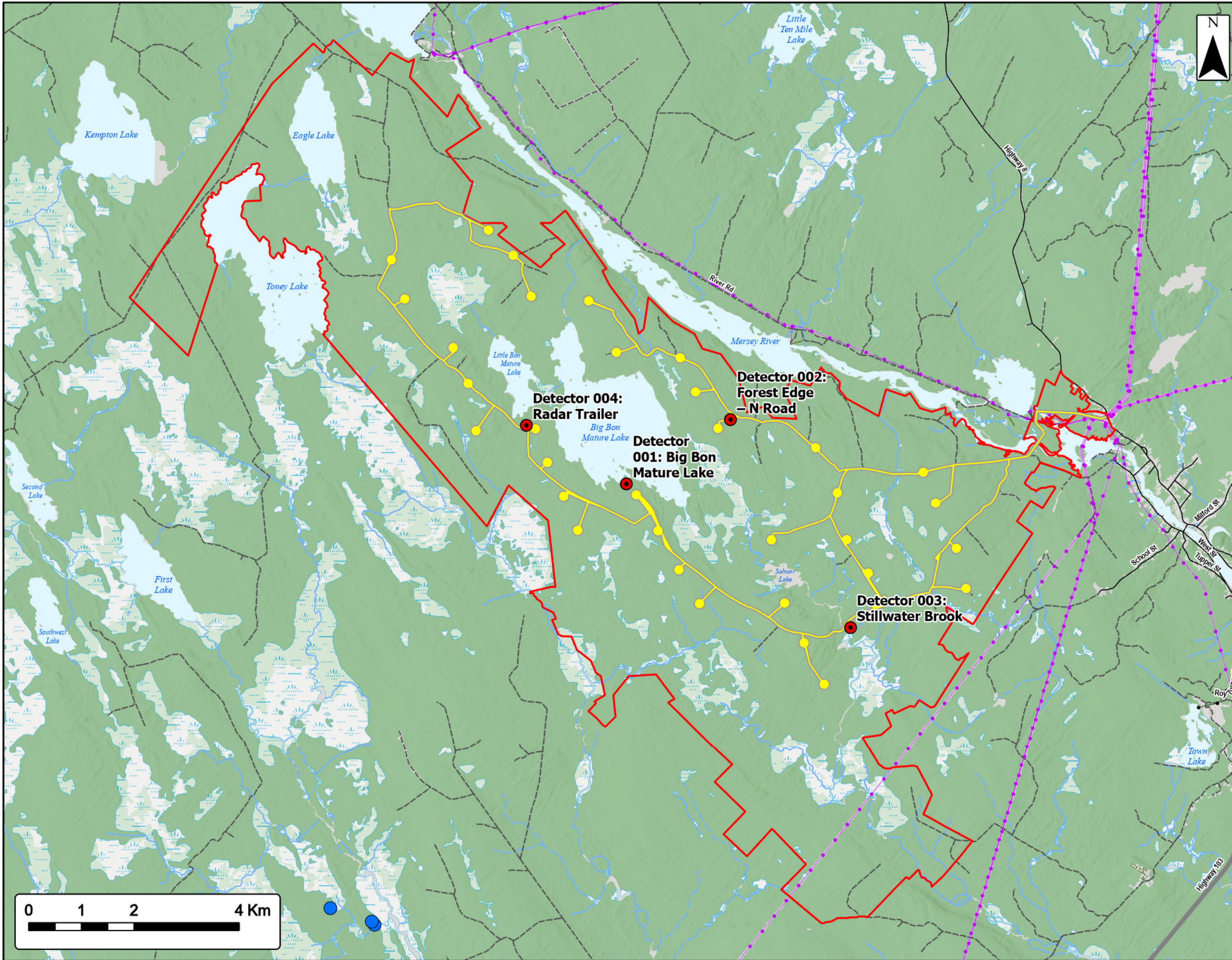
- Study Area
- Assessment Area
- Trail Camera
- Transportation**
- Highway
- Road
- Unpaved Road
- Utilities (line)**
- Existing Pipeline
- Existing Transmission Lines
- Water Features**
- Mapped Stream
- Mapped Indefinite Stream
- Mapped Lakes and Rivers
- Mapped Wet Area



Coordinate System: NAD83 UTM Zone 20N Sources: Esri Basemaps, GeoNOVA, SNSIS, NRCAN, NSNRR, ACCDC, IBA Canada

Date: Jan 2023	Project #: 21-7833
Scale: 1:70,000	Drawing #: 7.22
Drawn By: P. Opra	7.22
Checked By: M. Savelle	





Mersey River Wind Farm
Bat Assessment



MERSEY RIVER WIND

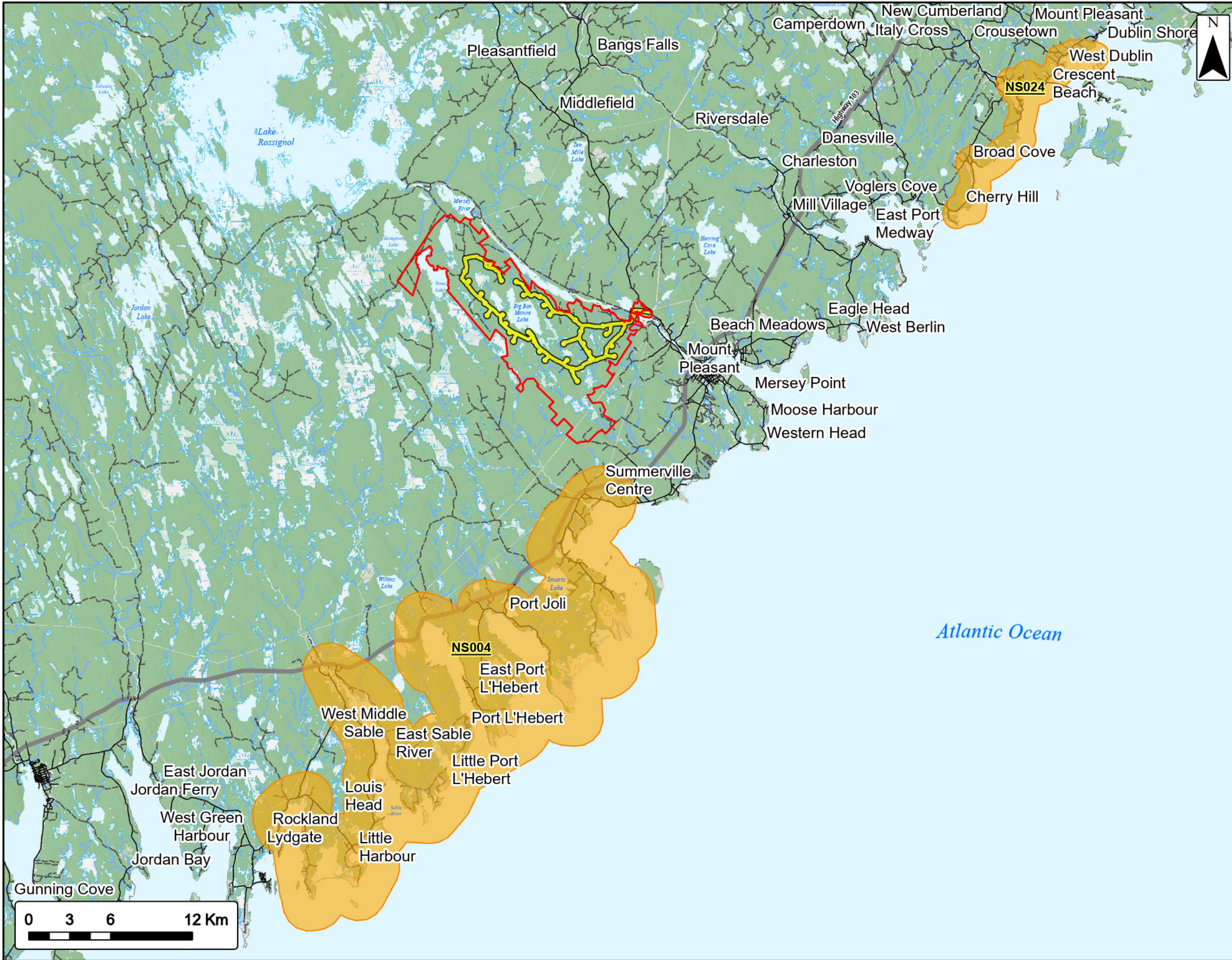
- Study Area
- Assessment Area
- Bat Monitoring Location
- Abandoned Mine Openings
- Transportation**
- Highway
- Road
- Unpaved Road
- Utilities (line)**
- Existing Pipeline
- Existing Transmission Lines
- Water Features**
- Mapped Stream
- Mapped Indefinite Stream
- Mapped Lakes and Rivers
- Mapped Wet Area



Coordinate System: NAD83 UTM Zone 20N
Sources: Esri Basemaps, GeoNOVA, SNGIS, NRCan, NSNRR, ACCOG, IBA Canada

Date: Jan 2023	Project #: 21-7833
Scale: 1:70,000	Drawing #: 7.23
Drawn By: M. Savelle	7.23
Checked By: M. Smith	





Mersey River Wind Farm

Overview of Nearest IBA Polygons



MERSEY RIVER WIND

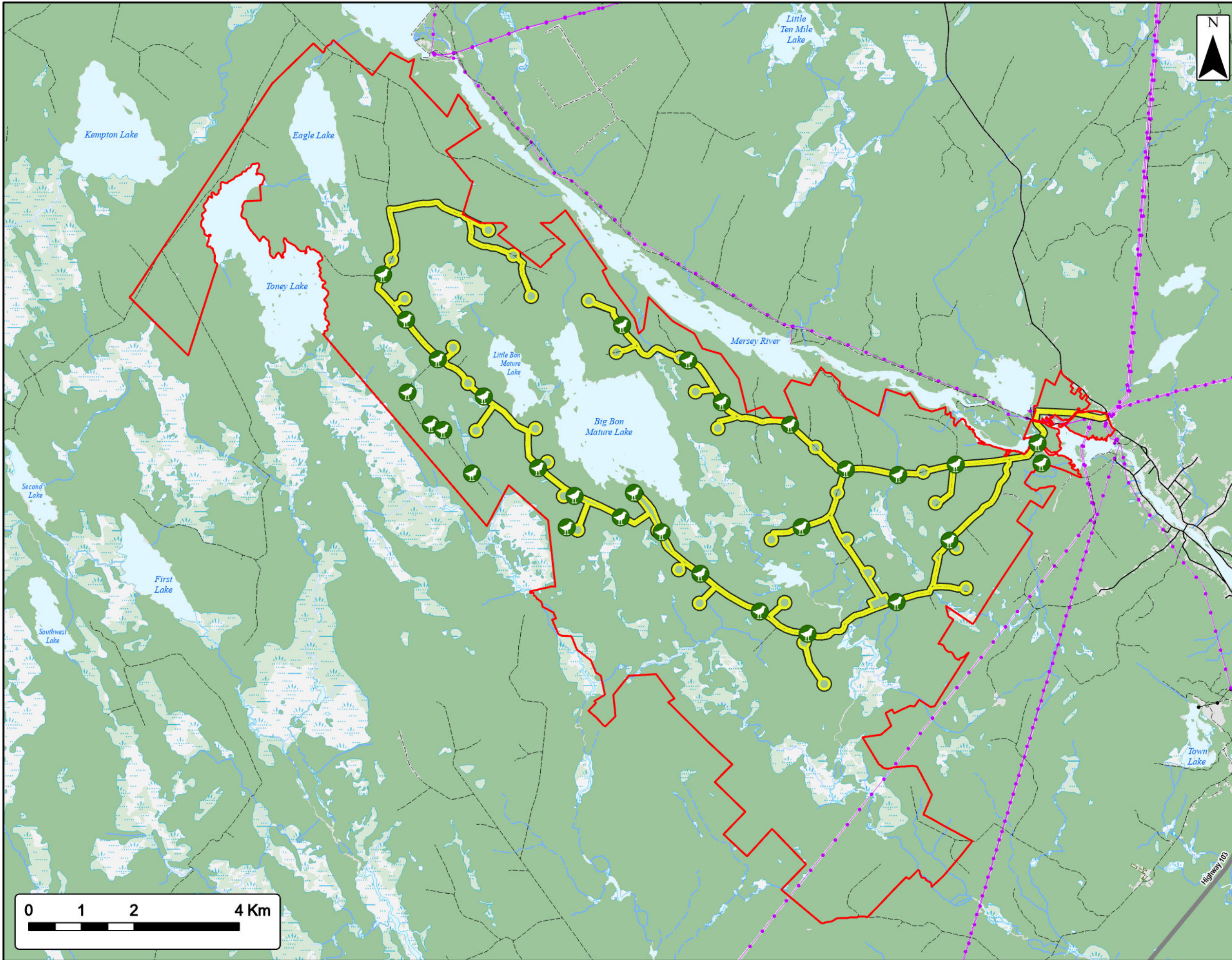
Study Area	
Assessment Area	
IBA - NS004 and NS024	
Transportation	
Highway	
Road	
Unpaved Road	
Water Features	
Mapped Lakes and Rivers	
Mapped Stream	
Mapped Indefinite Stream	
Mapped Wet Area	



Coordinate System: NAD83 UTM Zone 20N Sources: Esri Basemaps, GeoNOVA, SNSIS, NRCAN, NSNRR, ACCDC, IBA Canada

Date:	Jan 2023	Project #:	21-7833
Scale:	1:270,000	Drawing #:	7.24
Drawn By:	P. Opra		
Checked By:	M. Savelle		





Mersey River Wind Farm

Point Count Locations



MERSEY RIVER WIND

Study Area	
Assessment Area	
Point Count Bird SAR Observations	
Transportation	
Highway	
Road	
Unpaved Road	
Utilities (line)	
Existing Pipeline	
Existing Transmission Lines	
Water Features	
Mapped Stream	
Mapped Indefinite Stream	
Mapped Lakes and Rivers	
Mapped Wet Area	



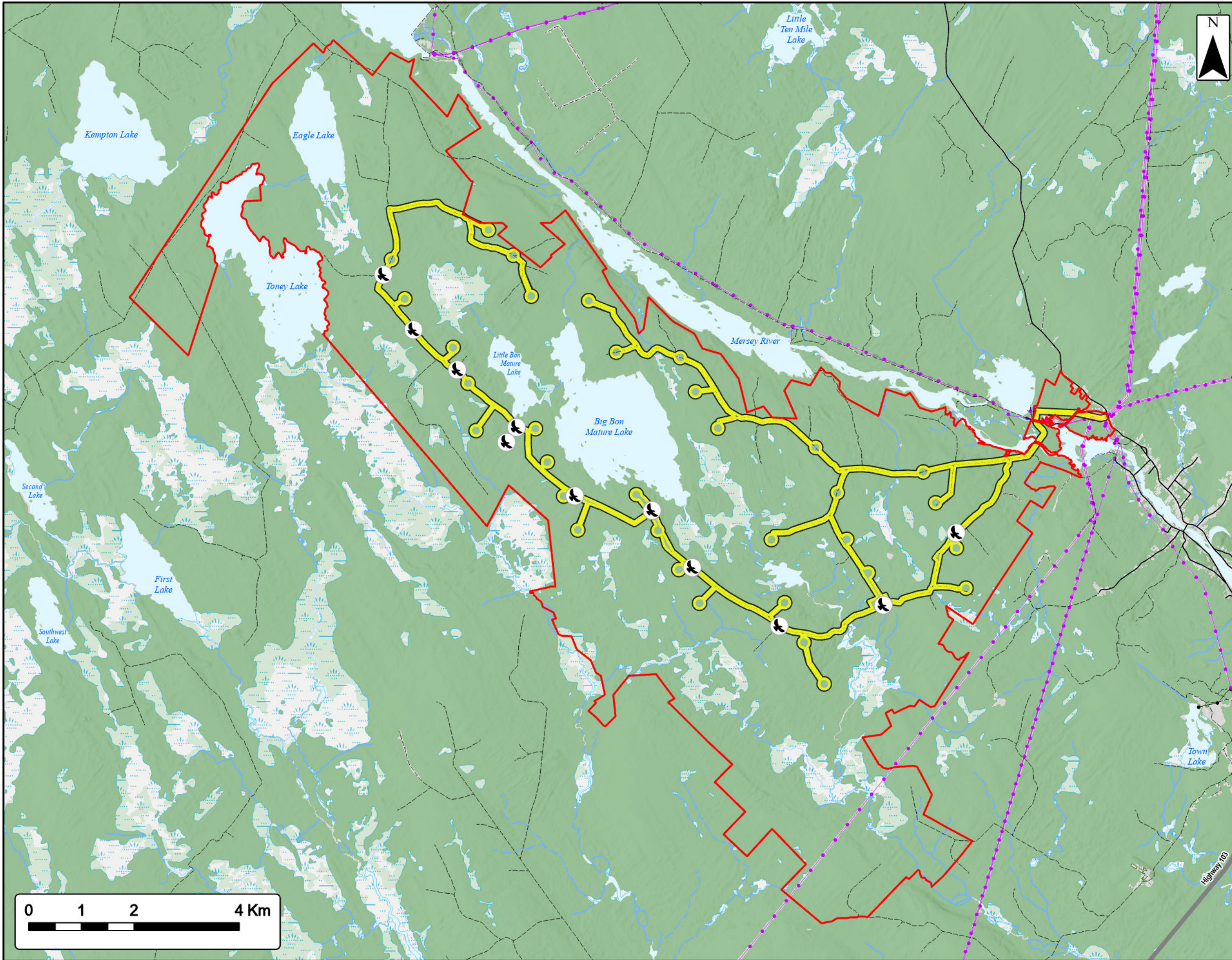
Coordinate System: NAD83 UTM Zone 20N Sources: Esri Basemaps, GeoNOVA, SNSIS, NRCan, NSNRR, ACCDC, IBA Canada

Date:	Jan 2023	Project #:	21-7833
Scale:	1:70,000	Drawing #:	7.25
Drawn By:	P. Opra		
Checked By:	M. Savelle		



Engineering - Surveying - Environmental
Bedford - Antigonish - Moncton - St. John's





Mersey River Wind Farm
 CONI and Diurnal Watch Locations



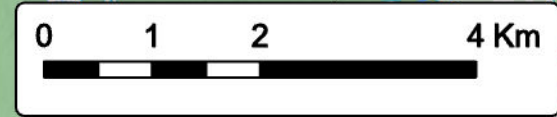
MERSEY RIVER WIND

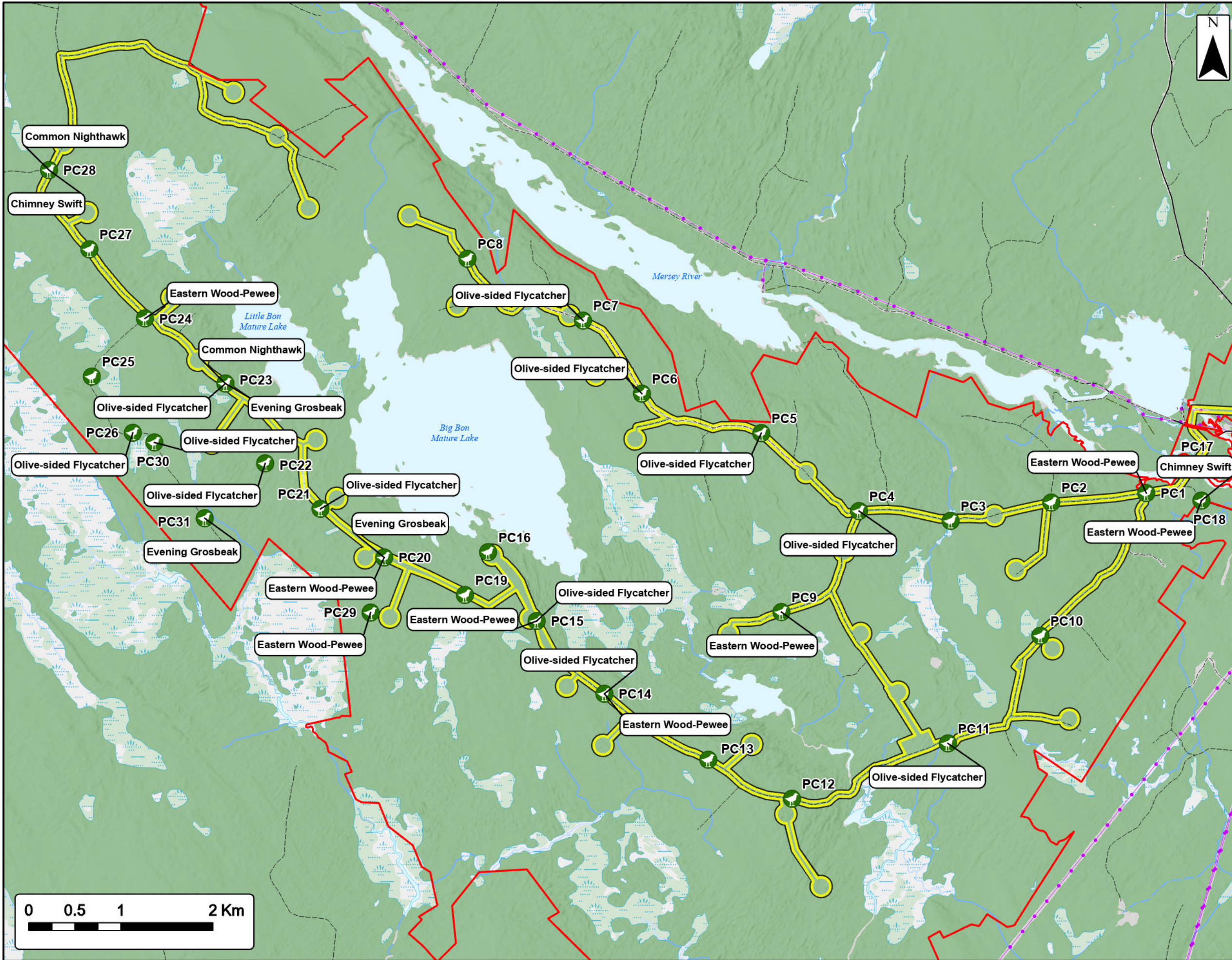
Study Area	
Assessment Area	
CONI or Diurnal Watch Pt.	
Transportation	
Highway	
Road	
Unpaved Road	
Utilities (line)	
Existing Pipeline	
Existing Transmission Lines	
Water Features	
Mapped Stream	
Mapped Indefinite Stream	
Mapped Lakes and Rivers	
Mapped Wet Area	



Coordinate System: NAD83 UTM Zone 20N Sources: Esri Basemaps, GeoNOVA, SNSIS, NRCan, NSNRR, ACCDC, IBA Canada

Date:	Jan 2023	Project #:	21-7833
Scale:	1:70,000	Drawing #:	7.26
Drawn By:	P. Opra		
Checked By:	M. Savelle		





Mersey River Wind Farm

Point Count Bird SAR Observations



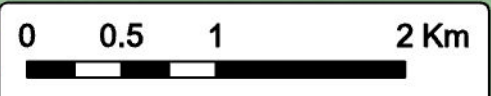
MERSEY RIVER WIND

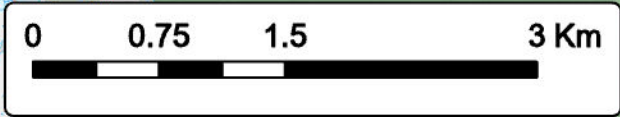
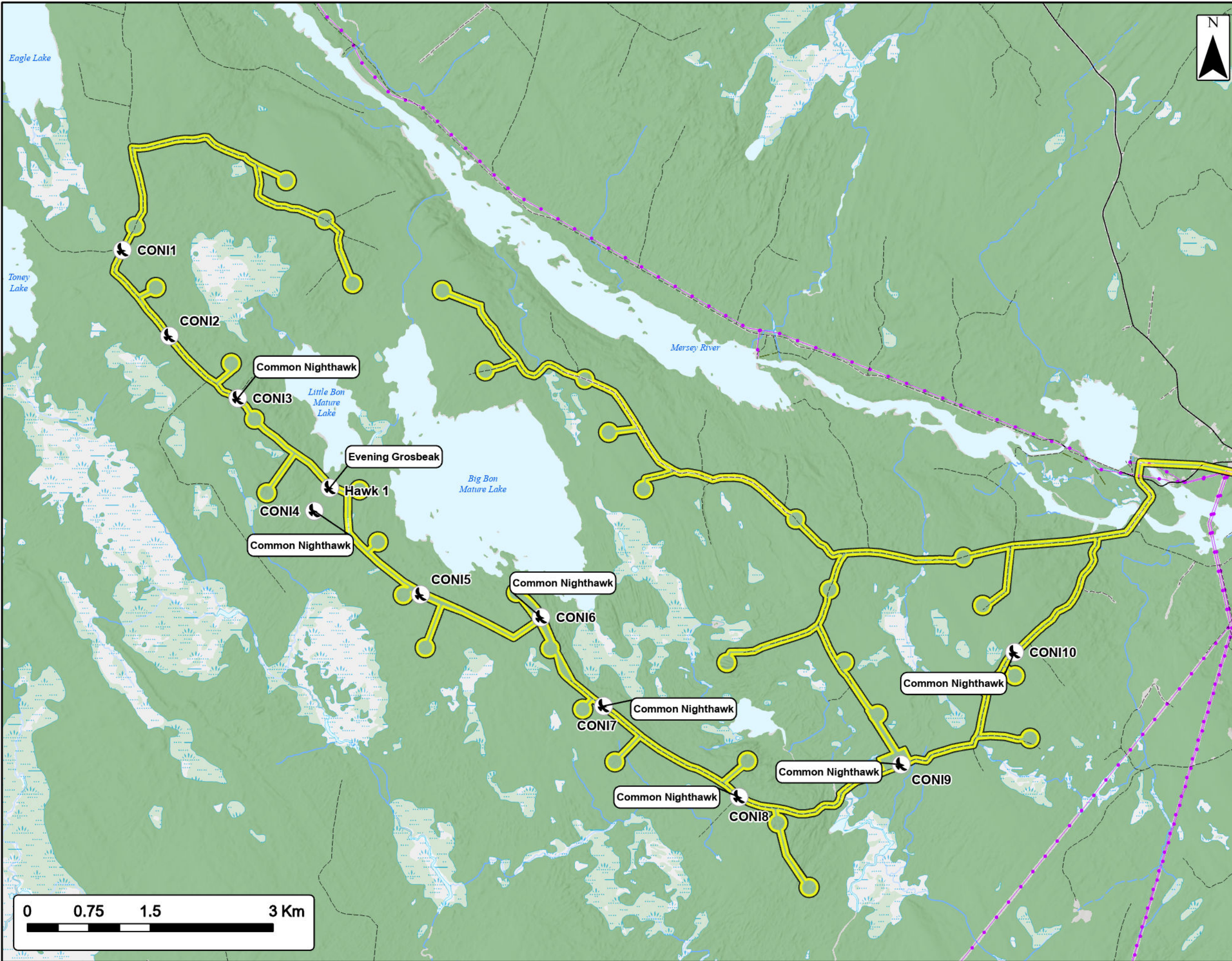
Study Area	
Assessment Area	
Point Count Bird SAR Observations	
Transportation	
Road	
Unpaved Road	
Utilities (line)	
Existing Transmission Lines	
Water Features	
Mapped Stream	
Mapped Indefinite Stream	
Mapped Lakes and Rivers	
Mapped Wet Area	



Coordinate System: NAD83 UTM Zone 20N Sources: Esri Basemaps, GeoNOVA, SNSIS, NRCan, NSNRR, ACCDC, IBA Canada

Date:	Jan 2023	Project #:	21-7833
Scale:	1:40,000	Drawing #:	7.27
Drawn By:	P. Opra		
Checked By:	M. Savelle		





Mersey River Wind Farm
 CONI and Diurnal Watch SAR Observations



MERSEY RIVER WIND

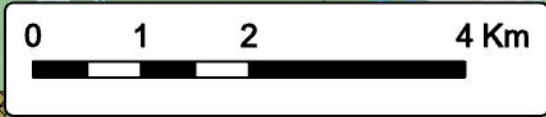
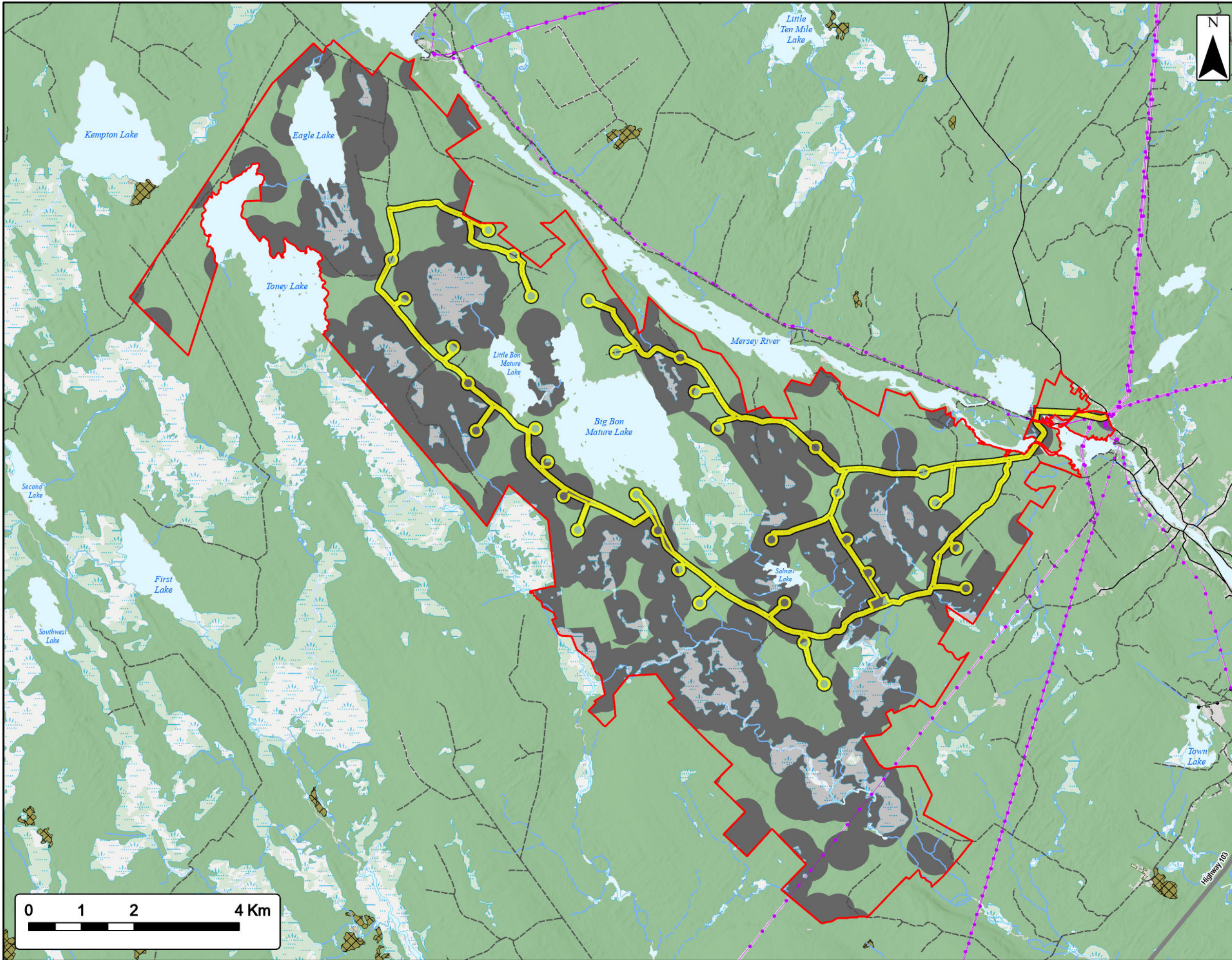
Assessment Area	
Diurnal Watch Bird SAR Observations	
Transportation	
Road	
Unpaved Road	
Utilities (line)	
Existing Transmission Lines	
Water Features	
Mapped Stream	
Mapped Indefinite Stream	
Mapped Lakes and Rivers	
Mapped Wet Area	



Coordinate System: NAD83 UTM Zone 20N
 Sources: Esri Basemaps, GeoNOVA, SNSIS, NRCan, NSNRR, ACCDC, IBA Canada

Date:	Jan 2023	Project #:	21-7833
Scale:	1:45,000	Drawing #:	7.28
Drawn By:	P. Opra		
Checked By:	M. Savelle		





Mersey River Wind Farm

Potential Chimney Swift Habitat



MERSEY RIVER WIND

Study Area	
Assessment Area	
Potential Chimney Swift Habitat	
Stand Containing Dead Trees	
Transportation	
Highway	
Road	
Unpaved Road	
Utilities (line)	
Existing Pipeline	
Existing Transmission Lines	
Water Features	
Mapped Stream	
Mapped Indefinite Stream	
Mapped Lakes and Rivers	
Mapped Wet Area	

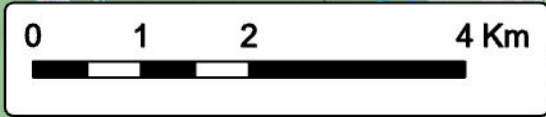
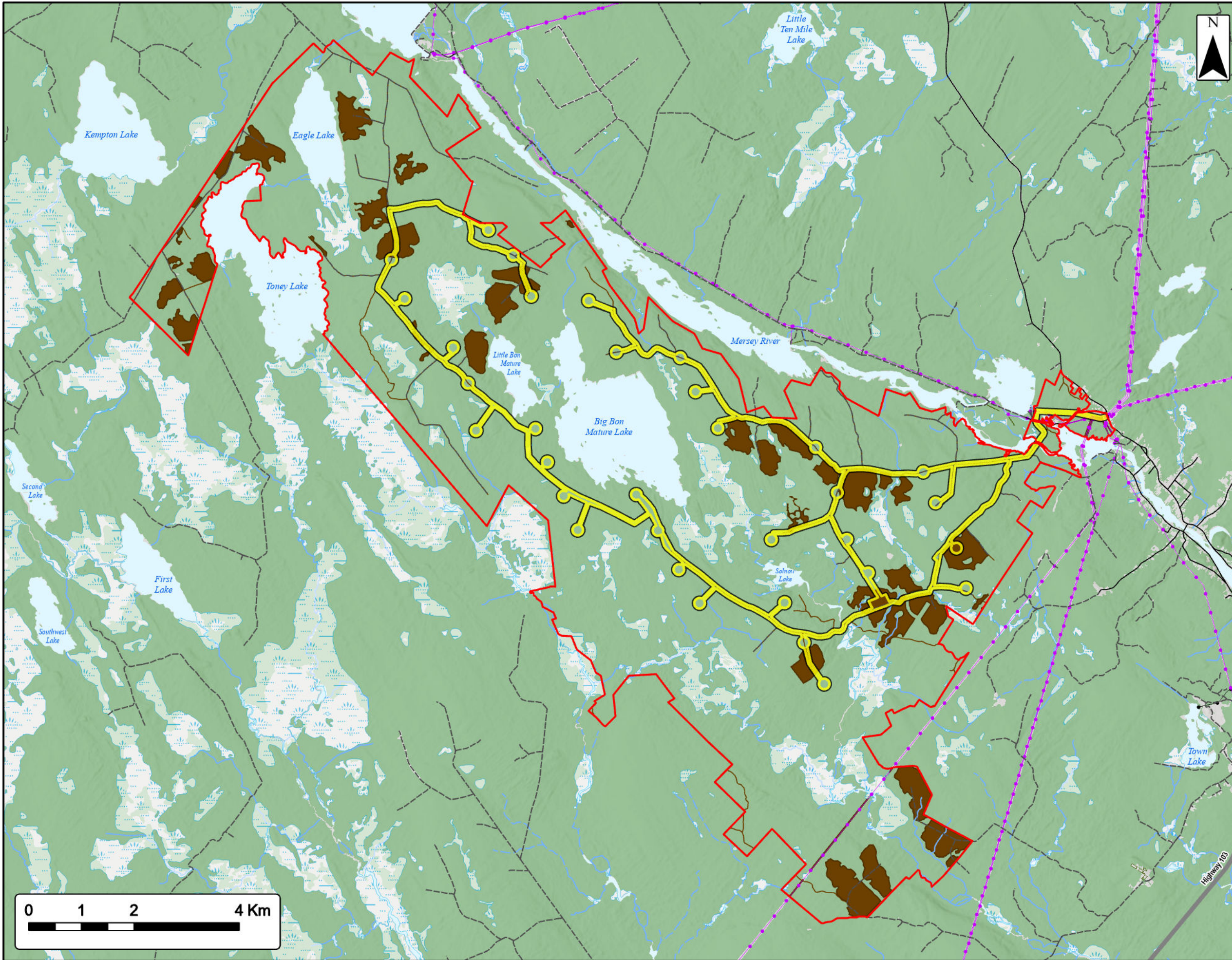


Coordinate System: NAD83 UTM Zone 20N Sources: Esri Basemaps, GeoNOVA, SNSIS, NRCan, NSNRR, ACCDC, IBA Canada

Date:	Jan 2023	Project #:	21-7833
Scale:	1:70,000	Drawing #:	7.29
Drawn By:	P. Opra		
Checked By:	M. Savelle		



Engineering - Surveying - Environmental
Bedford - Antigonish - Moncton - St. John's



Mersey River Wind Farm
Common Nighthawk Breeding Habitat



MERSEY RIVER WIND

Study Area	
Assessment Area	
Common Nighthawk Breeding Habitat	
Transportation	
Highway	
Road	
Unpaved Road	
Utilities (line)	
Existing Pipeline	
Existing Transmission Lines	
Water Features	
Mapped Stream	
Mapped Indefinite Stream	
Mapped Lakes and Rivers	
Mapped Wet Area	



Coordinate System: NAD83 UTM Zone 20N
Sources: Esri Basemaps, GeoNOVA, SNSIS, NRCAN, NSNRR, ACCDC, IBA Canada

Date:	Jan 2023	Project #:	21-7833
Scale:	1:70,000	Drawing #:	7.30
Drawn By:	P. Opra		
Checked By:	M. Savelle		

