



Mersey River Wind Farm
Wet Area Mapping







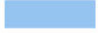





MERSEY RIVER WIND




Study Area 

Assessment Area 

Depth to Water (cm)

- 0 - 10 
- 10 - 20 
- 20 - 30 
- 30 - 40 
- 40 - 50 
- 50 - 60 
- 60 - 70 
- 70 - 80 
- 80 - 90 
- 90 - 100 

Transportation

- Highway 
- Road 
- Unpaved Road 

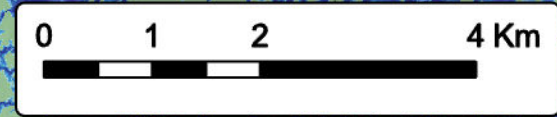


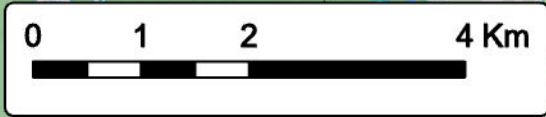
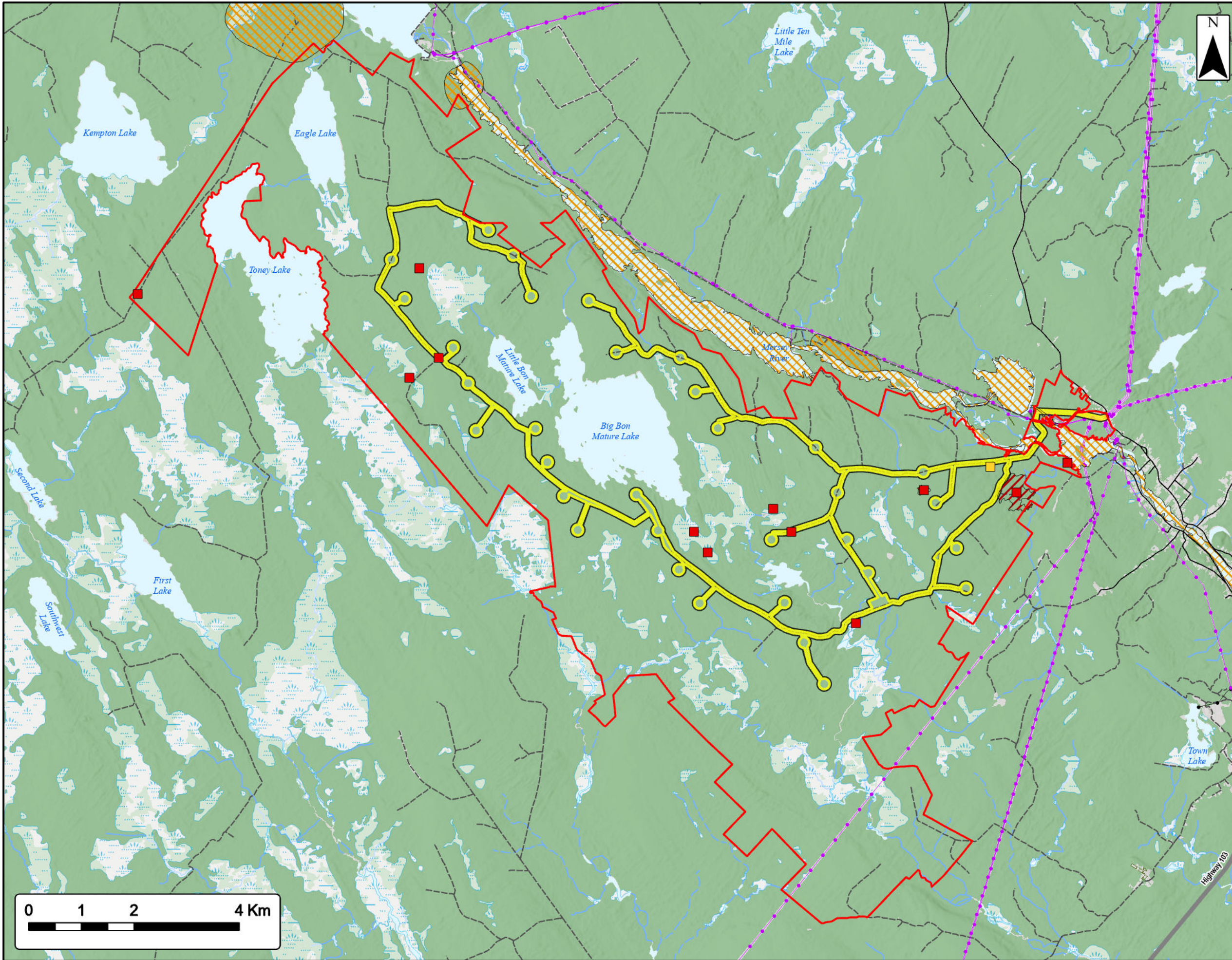
Coordinate System: NAD83 UTM Zone 20N Sources: Esri Basemaps, GeoNOVA, SNGIS, NRCan, NSNRR, ACCOG, IBA Canada

Date:	Jan 2023	Project #:	21-7833
Scale:	1:70,000	Drawing #:	7.14
Drawn By:	M. Savelle		
Checked By:	M. Smith		



Engineering - Surveying - Environmental
Bedford - Antigonish - Moncton - St. John's





Mersey River Wind Farm

Overview of Vertebrate, Invertebrate
ACCDC Records and Significant Habitat



MERSEY RIVER WIND

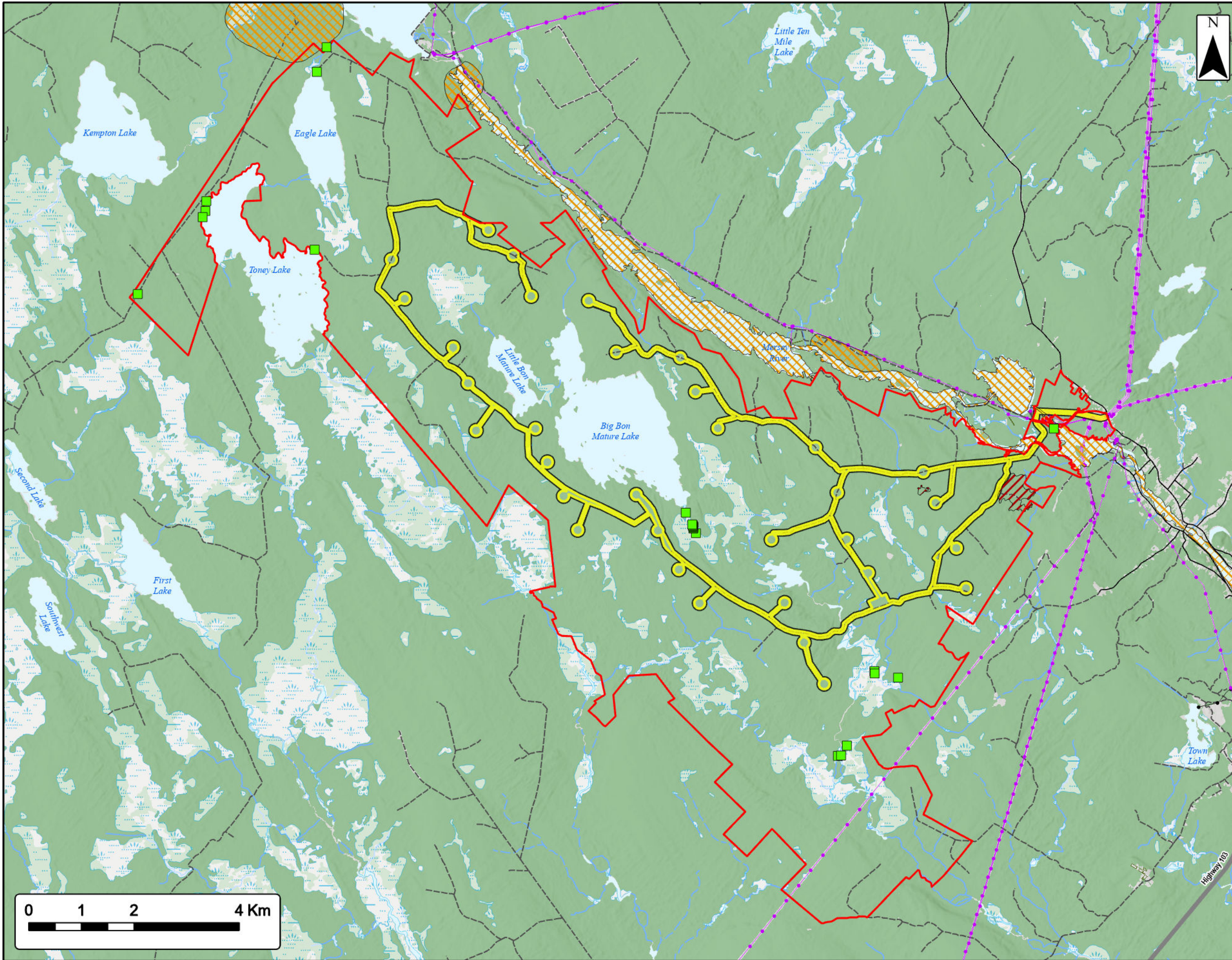
Study Area	
Assessment Area	
ACCDC Pt. Data	
Vertebrate Fauna	
Invertebrate Fauna	
Significant Species & Habitats (NSNRR)	
Other Habitat	
Species at Risk	
Utilities (line)	
Existing Pipeline	
Existing Transmission Lines	
Transportation	
Highway	
Road	
Unpaved Road	
Water Features	
Mapped Stream	
Mapped Indefinite Stream	
Mapped Lakes and Rivers	
Mapped Wet Area	



Coordinate System: NAD83 UTM Zone 20N
Sources: Esri Basemaps, GeoNOVA, SNSIS, NRCan, NSNRR, ACCDC, IBA Canada

Date:	Jan 2023	Project #:	21-7833
Scale:	1:70,000	Drawing #:	7.15A
Drawn By:	P. Opra		
Checked By:	M. Savelle		





Mersey River Wind Farm
 Overview of Vascular Flora ACCDC Records
 and Significant Habitat



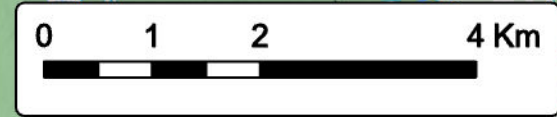
MERSEY RIVER WIND

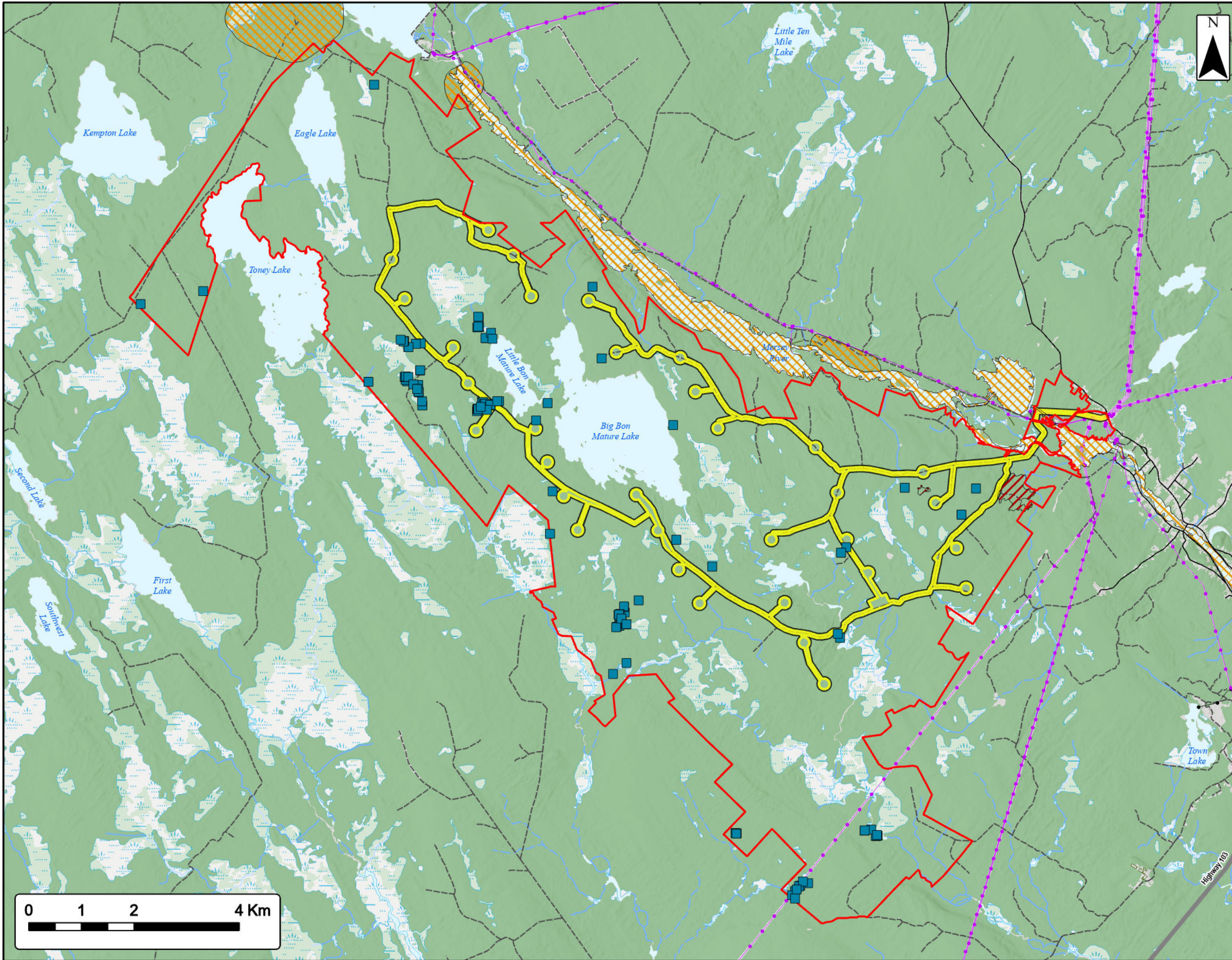
Study Area	
Assessment Area	
ACDC Pt. Data	
Vascular Flora	
Significant Species & Habitats (NSNRR)	
Other Habitat	
Species at Risk	
Utilities (line)	
Existing Pipeline	
Existing Transmission Lines	
Transportation	
Highway	
Road	
Unpaved Road	
Water Features	
Mapped Stream	
Mapped Indefinite Stream	
Mapped Lakes and Rivers	
Mapped Wet Area	



Coordinate System: NAD83 UTM Zone 20N
 Sources: Esri Basemaps, GeoNOVA, SNSIS, NRCan, NSNRR, ACCDC, IBA Canada

Date:	Jan 2023	Project #:	21-7833
Scale:	1:70,000	Drawing #:	7.15B
Drawn By:	P. Opra		
Checked By:	M. Savelle		





Mersey River Wind Farm
 Overview of Nonvascular Flora ACCDC Records
 and Significant Habitat



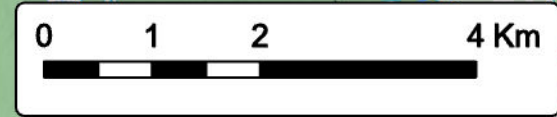
MERSEY RIVER WIND

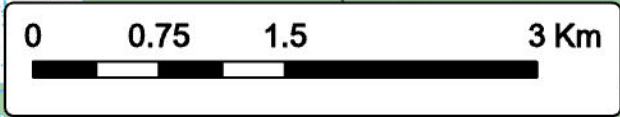
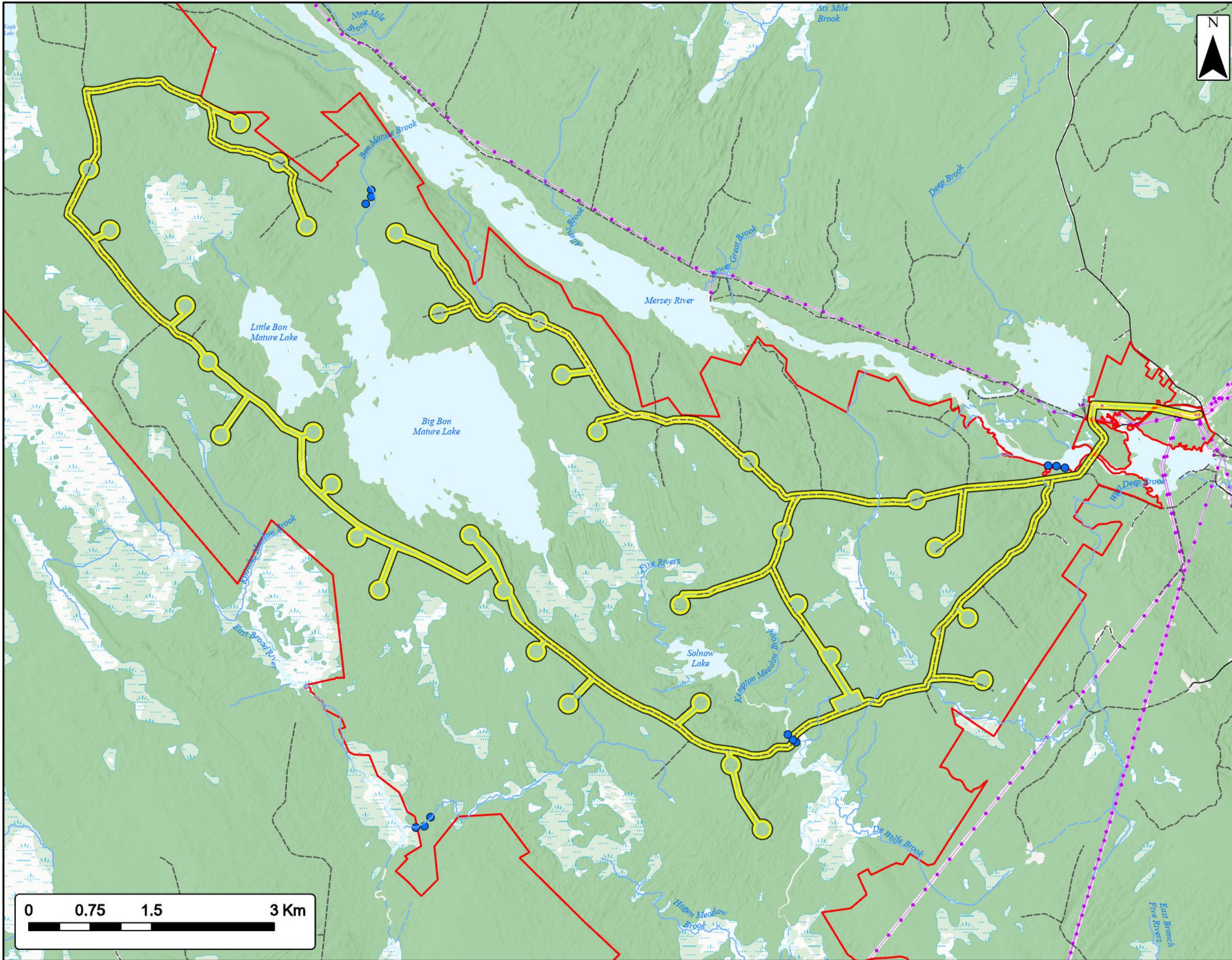
- Study Area
- Assessment Area
- ACCDC Pt. Data
- Nonvascular Flora
- Significant Species & Habitats (NSNRR)**
- Other Habitat
- Species at Risk
- Utilities (line)**
- Existing Pipeline
- Existing Transmission Lines
- Transportation**
- Highway
- Road
- Unpaved Road
- Water Features**
- Mapped Stream
- Mapped Indefinite Stream
- Mapped Lakes and Rivers
- Mapped Wet Area



Coordinate System: NAD83 UTM Zone 20N Sources: Esri Basemaps, GeoNOVA, SNSIS, NRCan, NSNRR, ACCDC, IBA Canada

Date: Jan 2023	Project #: 21-7833
Scale: 1:70,000	Drawing #: 7.15C
Drawn By: P. Opra	7.15C
Checked By: M. Savelle	





Mersey River Wind Farm

Fish Habitat - Electrofishing



MERSEY RIVER WIND

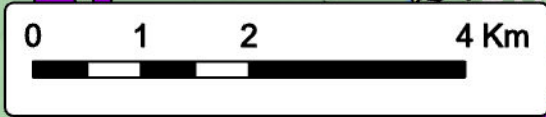
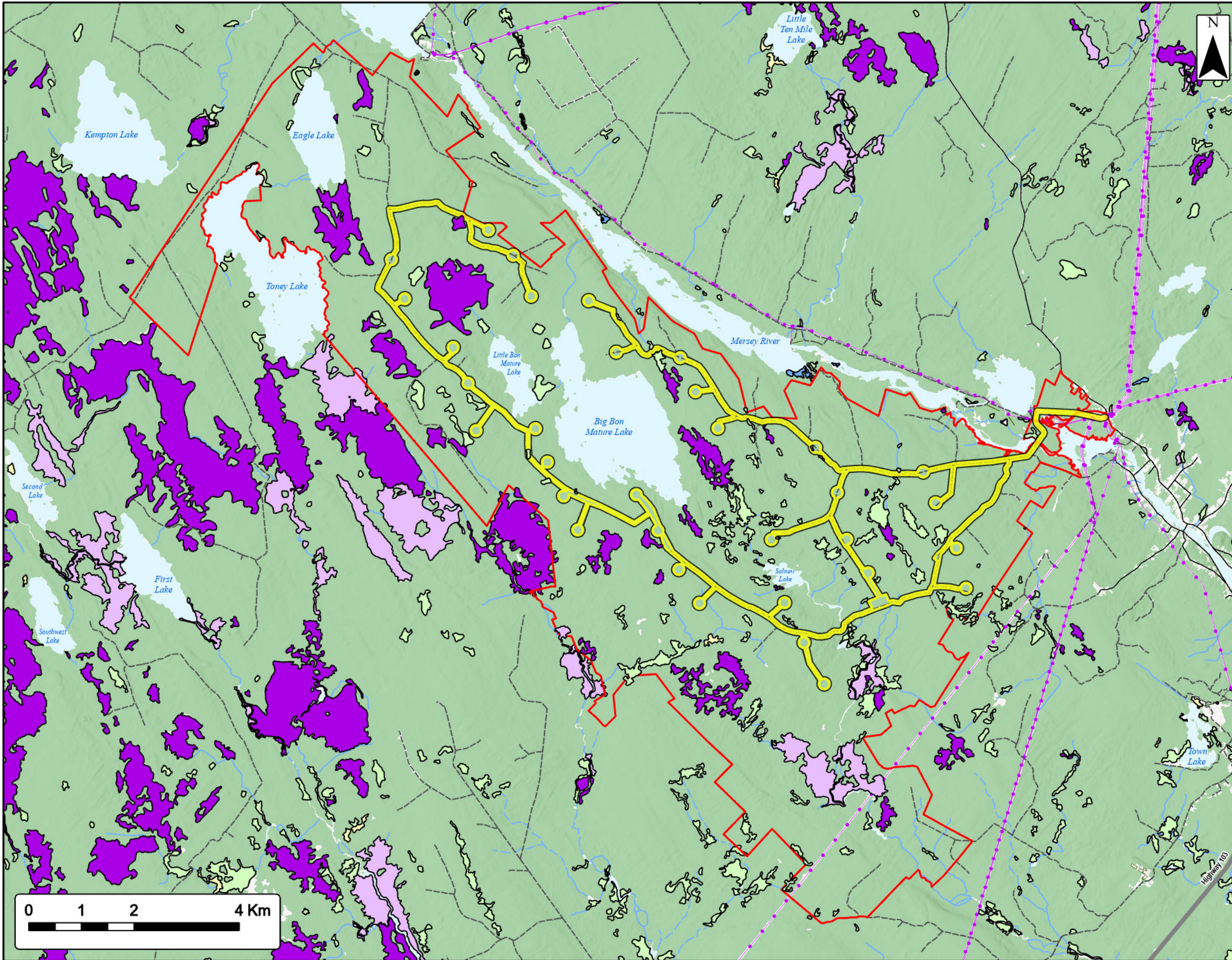
Study Area	
Assessment Area	
Electrofish Pt. Locations	
Transportation	
Road	
Unpaved Road	
Utilities (line)	
Existing Transmission Lines	
Water Features	
Mapped Stream	
Mapped Indefinite Stream	
Mapped Lakes and Rivers	
Mapped Wet Area	



Coordinate System: NAD83 UTM Zone 20N Sources: ESRI Basemaps, GeoNOVA, NSDT, HERE, Garmin, USGS, NRCAN

Date:	Jan 2023	Project #:	21-7833
Scale:	1:45,000	Drawing #:	7.16
Drawn By:	P. Opra		
Checked By:	M. Savelle		





Mersey River Wind Farm

Overview of NSNRR Wetlands Data



MERSEY RIVER WIND

Study Area	
Assessment Area	
NSNRR Wetland Inventory	
Bog or Fen	
Fen	
Marsh	
Swamp	
Water	
Transportation	
Highway	
Road	
Unpaved Road	
Utilities (line)	
Existing Pipeline	
Existing Transmission Lines	
Water Features	
Mapped Stream	
Mapped Indefinite Stream	
Mapped Lakes and Rivers	

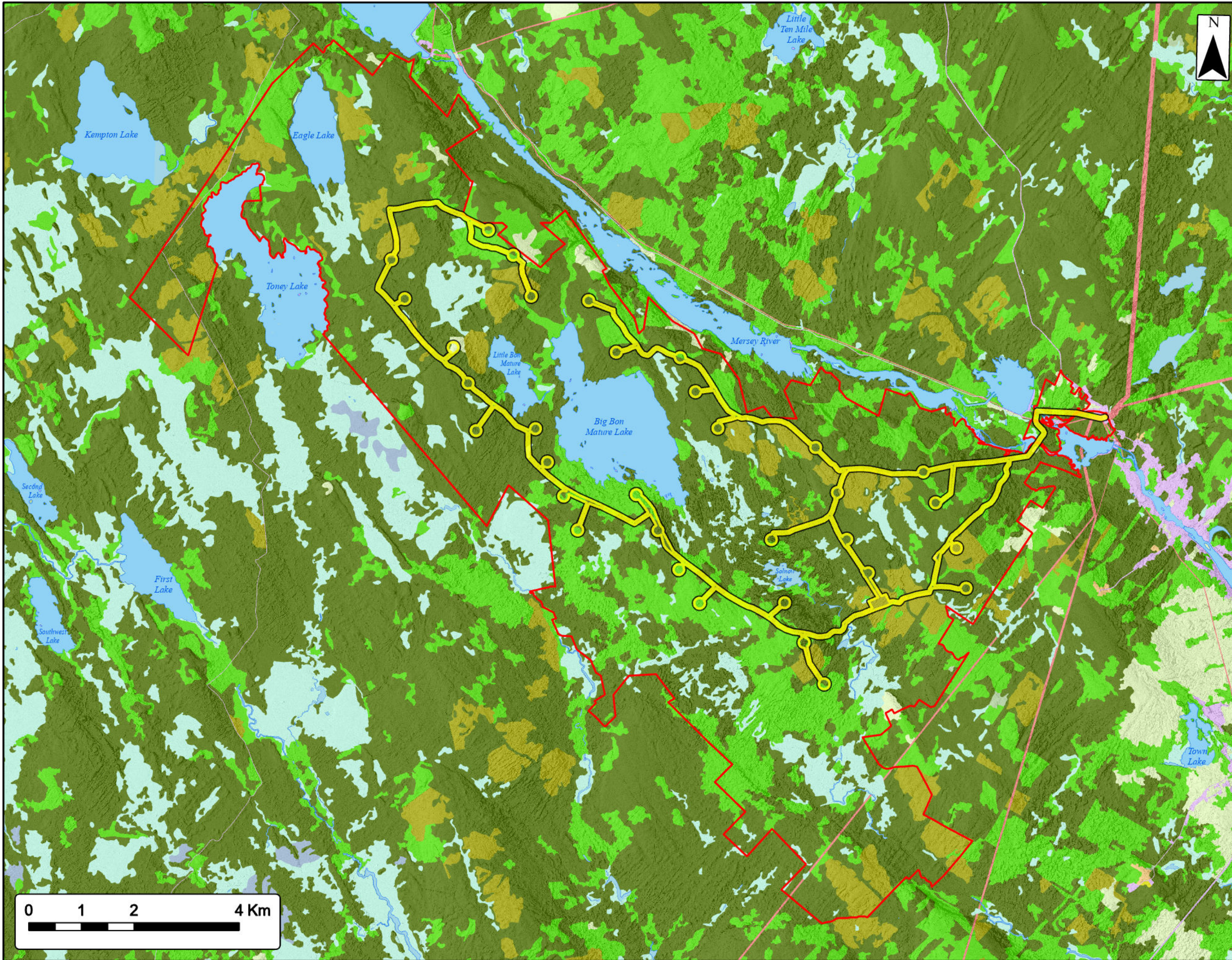


Coordinate System: NAD83 UTM Zone 20N Sources: Esri Basemaps, GeoNOVA, SNSIS, NRCan, NSNRR, ACCDC, IBA Canada

Date:	Jan 2023	Project #:	21-7833
Scale:	1:70,000	Drawing #:	7.17
Drawn By:	P. Opra		
Checked By:	M. Savelle		



Engineering - Surveying - Environmental
Bedford - Antigonish - Moncton - St. John's



Mersey River Wind Farm
 Overview of Land Cover
 (Based on NSTDB Forestry Data)



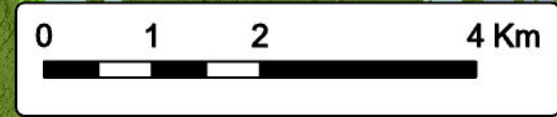
MERSEY RIVER WIND

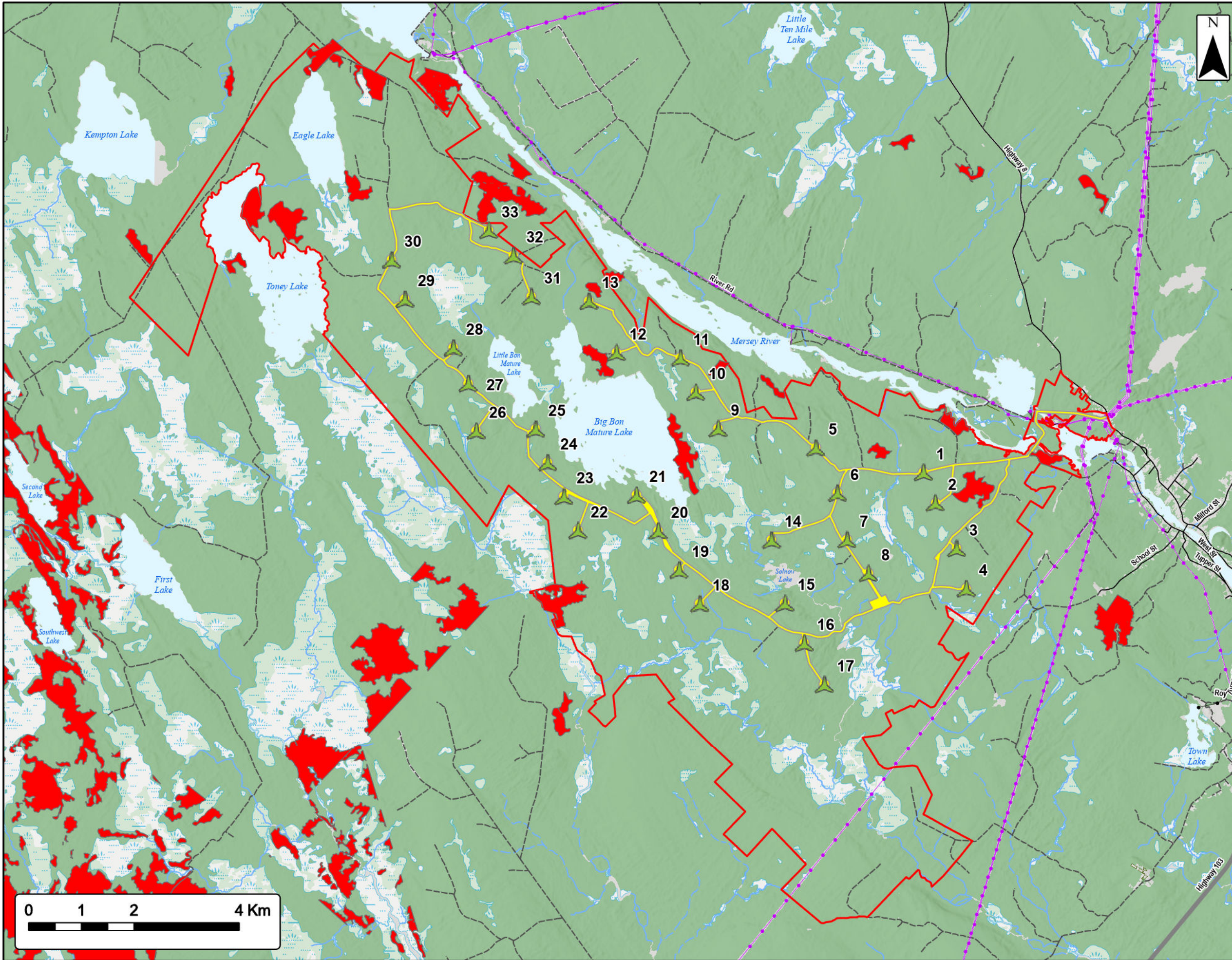
Study Area	
Assessment Area	
Land Cover	
Agriculture	
Blueberries or Barren	
Bogs or Wetlands	
Brush	
Hardwood	
Harvests	
Mixedwood	
Old Field	
Softwood	
Urban, Landfill, Quarry, Transport Corridor	
Utility Corridor	
Water	



Coordinate System: NAD83 UTM Zone 20N Sources: Esri Basemaps, GeoNOVA, SNSIS, NRCan, NSNRR, ACCDC, IBA Canada

Date:	Jan 2023	Project #:	21-7833
Scale:	1:70,000	Drawing #:	7.18
Drawn By:	P. Opra		
Checked By:	M. Savelle		





Mersey River Wind Farm

Old Growth



MERSEY RIVER WIND

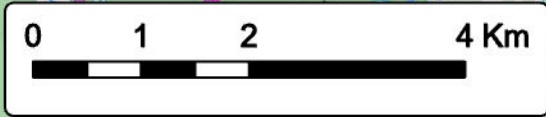
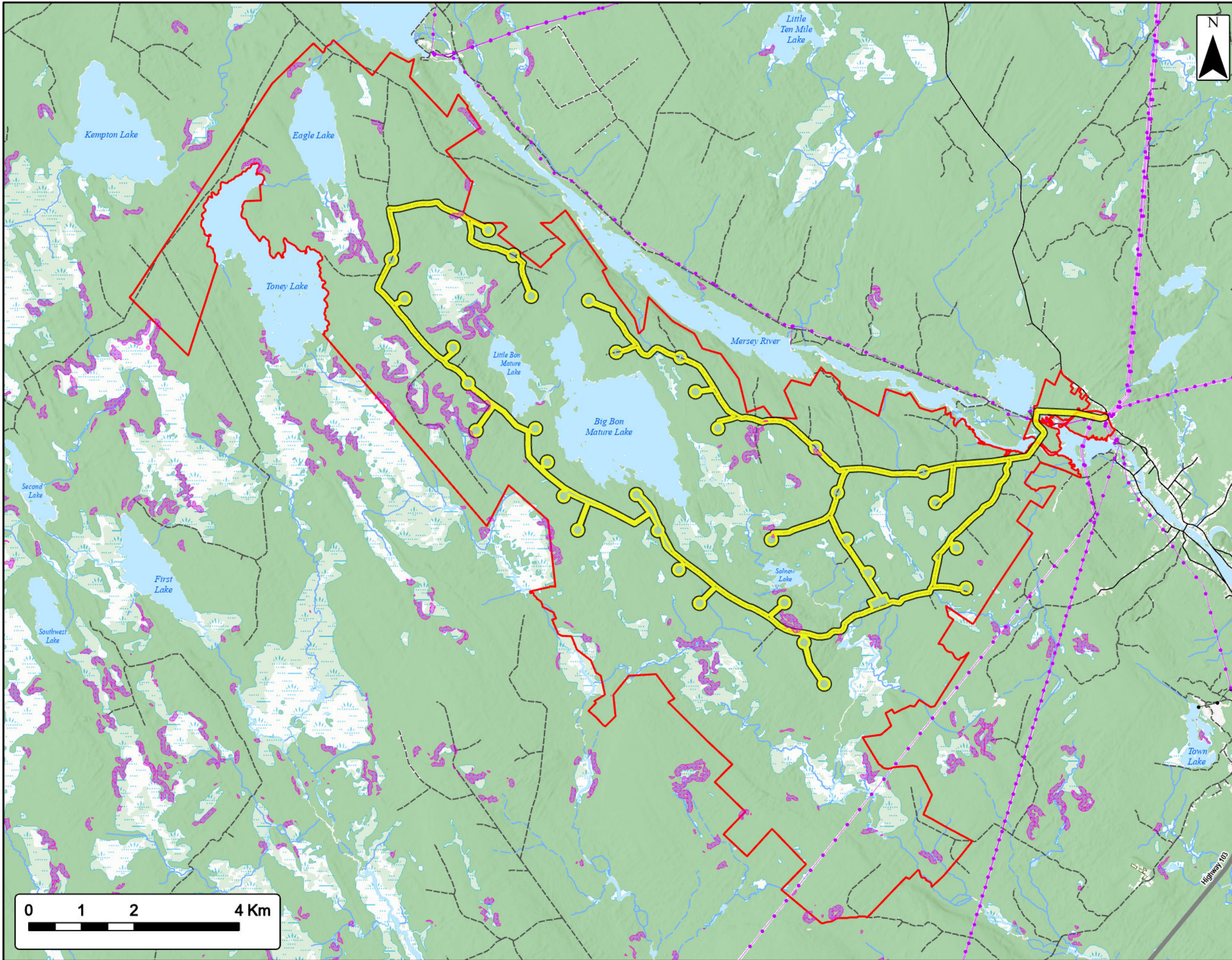
- Proposed Turbine Location
- Study Area
- Assessment Area
- Old Growth Policy
- Transportation**
- Highway
- Road
- Unpaved Road
- Utilities (line)**
- Existing Pipeline
- Existing Transmission Lines
- Water Features**
- Mapped Stream
- Mapped Indefinite Stream
- Mapped Lakes and Rivers
- Mapped Wet Area



Coordinate System: NAD83 UTM Zone 20N Sources: Esri Basemaps, GeoNOVA, SNGIS, NRCan, NSNRR, ACCOG, IBA Canada

Date:	Jan 2023	Project #:	21-7833
Scale:	1:70,000	Drawing #:	7.19
Drawn By:	M. Savelle		
Checked By:	M. Smith		





Mersey River Wind Farm

Overview of NSNRR Potential Boreal Felt Lichen Habitat



MERSEY RIVER WIND

Study Area	
Assessment Area	
Potential Boreal Felt Lichen Habitat	
Transportation	
Highway	
Road	
Unpaved Road	
Utilities (line)	
Existing Pipeline	
Existing Transmission Lines	
Water Features	
Mapped Stream	
Mapped Indefinite Stream	
Mapped Lakes and Rivers	
Mapped Wet Area	



Coordinate System: NAD83 UTM Zone 20N Sources: Esri Basemaps, GeoNOVA, SNSIS, NRCan, NSNRR, ACCDC, IBA Canada

Date:	Jan 2023	Project #:	21-7833
Scale:	1:70,000	Drawing #:	7.20
Drawn By:	P. Opra		
Checked By:	M. Savelle		

