



Mersey River Wind Farm
Field Assessments



MERSEY RIVER WIND

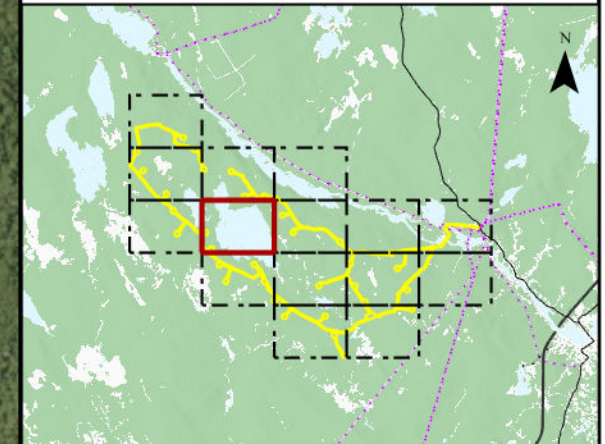
Proposed Turbine Location



Assessment Area



Field Assessed Wetland (WL)

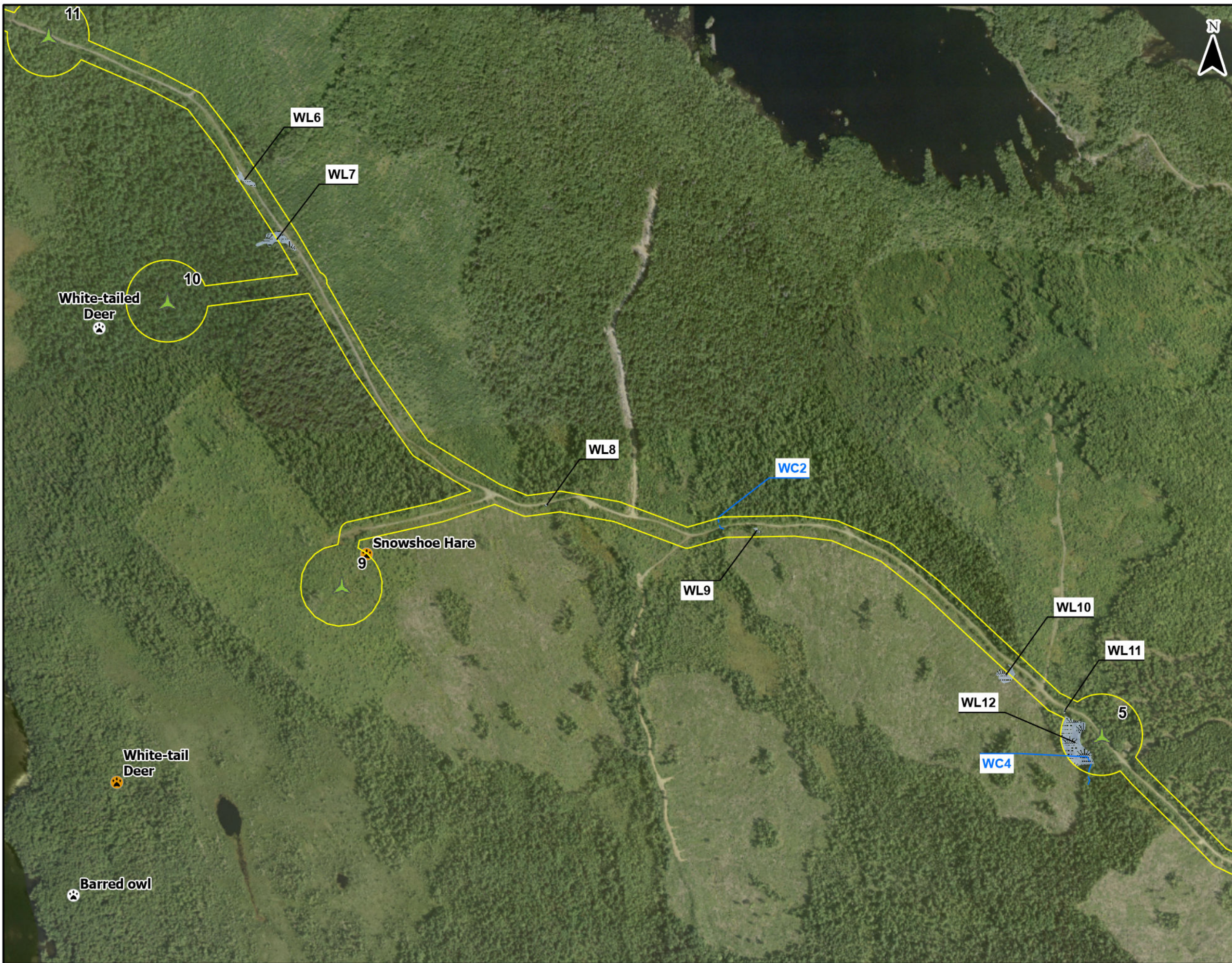


Coordinate System: NAD83 UTM Zone 20N Sources: ESRI Basemaps, GeoNOVA, NSTD, HERE, Garmin, USGS, NRCAN

Date:	Jan 2023	Project #:	21-7833
Scale:	1:9,000	Drawing #:	7.12F
Drawn By:	M. Savelle		
Checked By:	M. Smith		



Engineering - Surveying - Environmental
Bedford - Antigonish - Moncton - St. John's

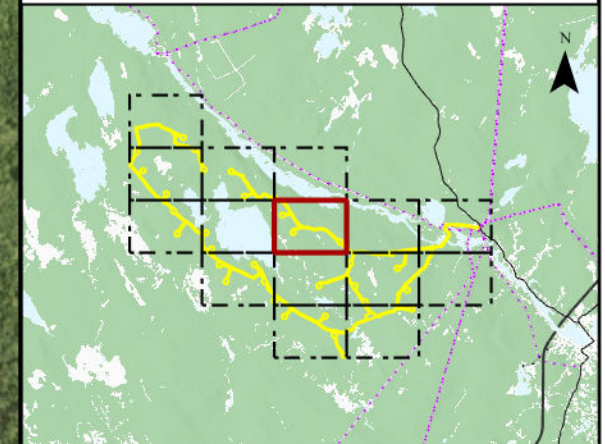


Mersey River Wind Farm
Field Assessments



MERSEY RIVER WIND

- Proposed Turbine Location
- Assessment Area
- Field Assessed Wetland (WL)
- Field Assessed Watercourse (WC)
- Wildlife Tracking
- Species Wildlife/ Pellet Survey Pt



Coordinate System: NAD83 UTM Zone 20N Sources: ESRI Basemaps, GeoNOVA, NSTD, HERE, Garmin, USGS, NRCAN

Date: Jan 2023	Project #: 21-7833
Scale: 1:9,000	Drawing #: 7.12G
Drawn By: M. Savelle	7.12G
Checked By: M. Smith	



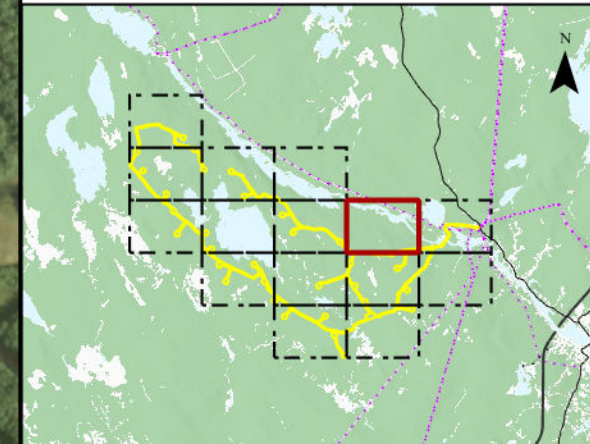


Mersey River Wind Farm
Field Assessments



MERSEY RIVER WIND

- Proposed Turbine Location
- Assessment Area
- Field Assessed Wetland (WL)
- Field Assessed Watercourse (WC)
- Species Wildlife/ Pellet Survey Pt



Coordinate System: NAD83 UTM Zone 20N Sources: ESRI Basemaps, GeoNOVA, NSTD, HERE, Garmin, USGS, NRCAN

Date: Jan 2023	Project #: 21-7833
Scale: 1:9,000	Drawing #: 7.12H
Drawn By: M. Savelle	7.12H
Checked By: M. Smith	



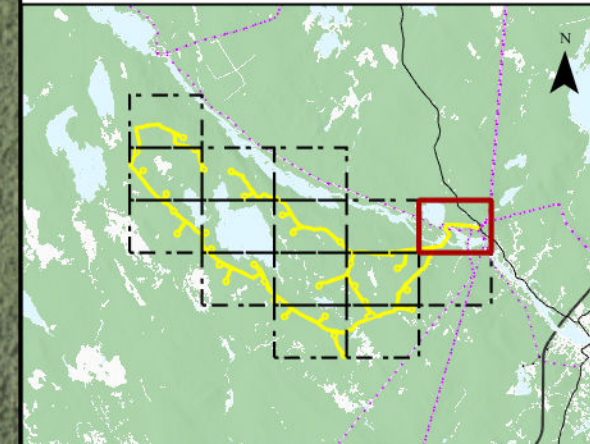


Mersey River Wind Farm
Field Assessments



MERSEY RIVER WIND

- Assessment Area
- Field Assessed Wetland (WL)
- Field Assessed Watercourse (WC)
- Turtle Siting



Coordinate System: NAD83 UTM Zone 20N Sources: ESRI Basemaps, GeoNOVA, NSTD, HERE, Garmin, USGS, NRCAN

Date: Jan 2023	Project #: 21-7833
Scale: 1:9,000	Drawing #: 7.121
Drawn By: M. Savelle	7.121
Checked By: M. Smith	



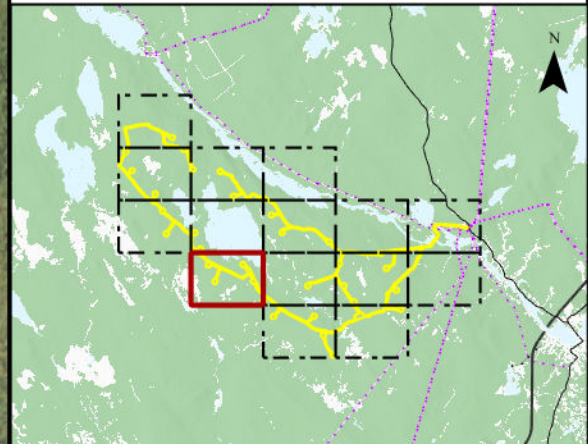
Mersey River Wind Farm

Field Assessments



MERSEY RIVER WIND

- Proposed Turbine Location
- Assessment Area
- Field Assessed Wetland (WL)
- Wildlife Tracking
- Species Wildlife/ Pellet Survey Pt
- Lichen

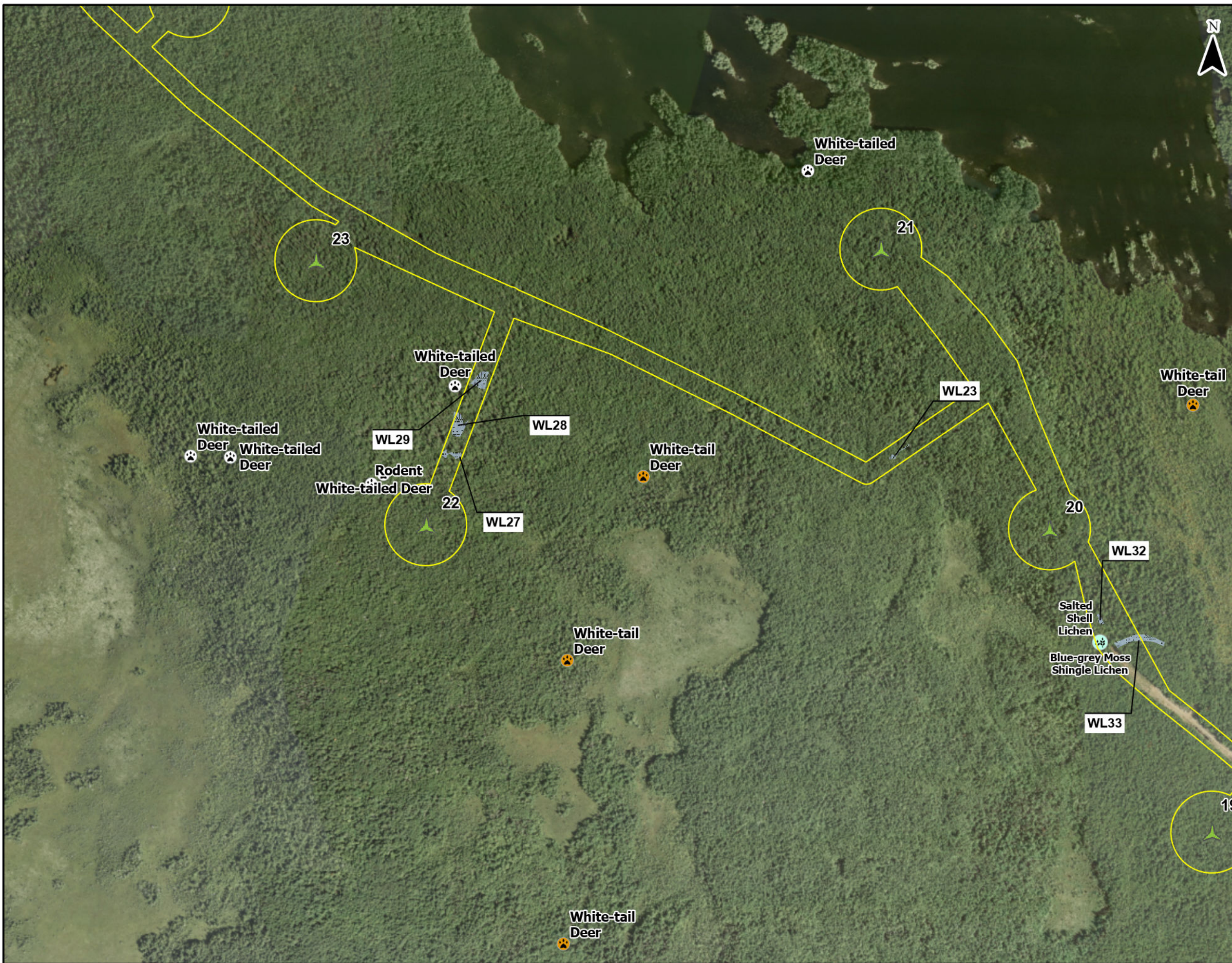


Coordinate System: NAD83 UTM Zone 20N Sources: ESRI Basemaps, GeoNOVA, NSTD, HERE, Garmin, USGS, NRCAN

Date: Jan 2023	Project #: 21-7833
Scale: 1:9,000	Drawing #: 7.12J
Drawn By: M. Savelle	7.12J
Checked By: M. Smith	



Engineering - Surveying - Environmental
Bedford - Antigonish - Moncton - St. John's



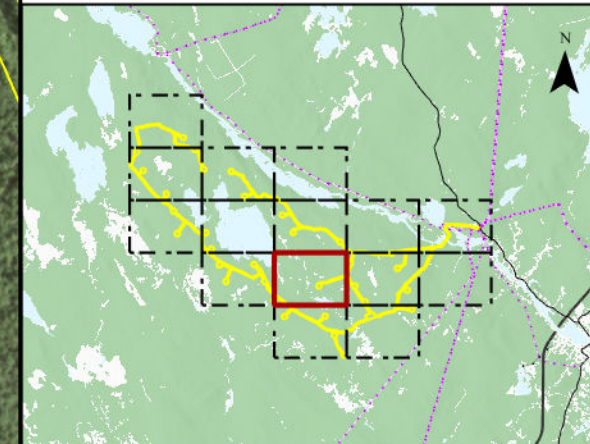


Mersey River Wind Farm
Field Assessments



MERSEY RIVER WIND

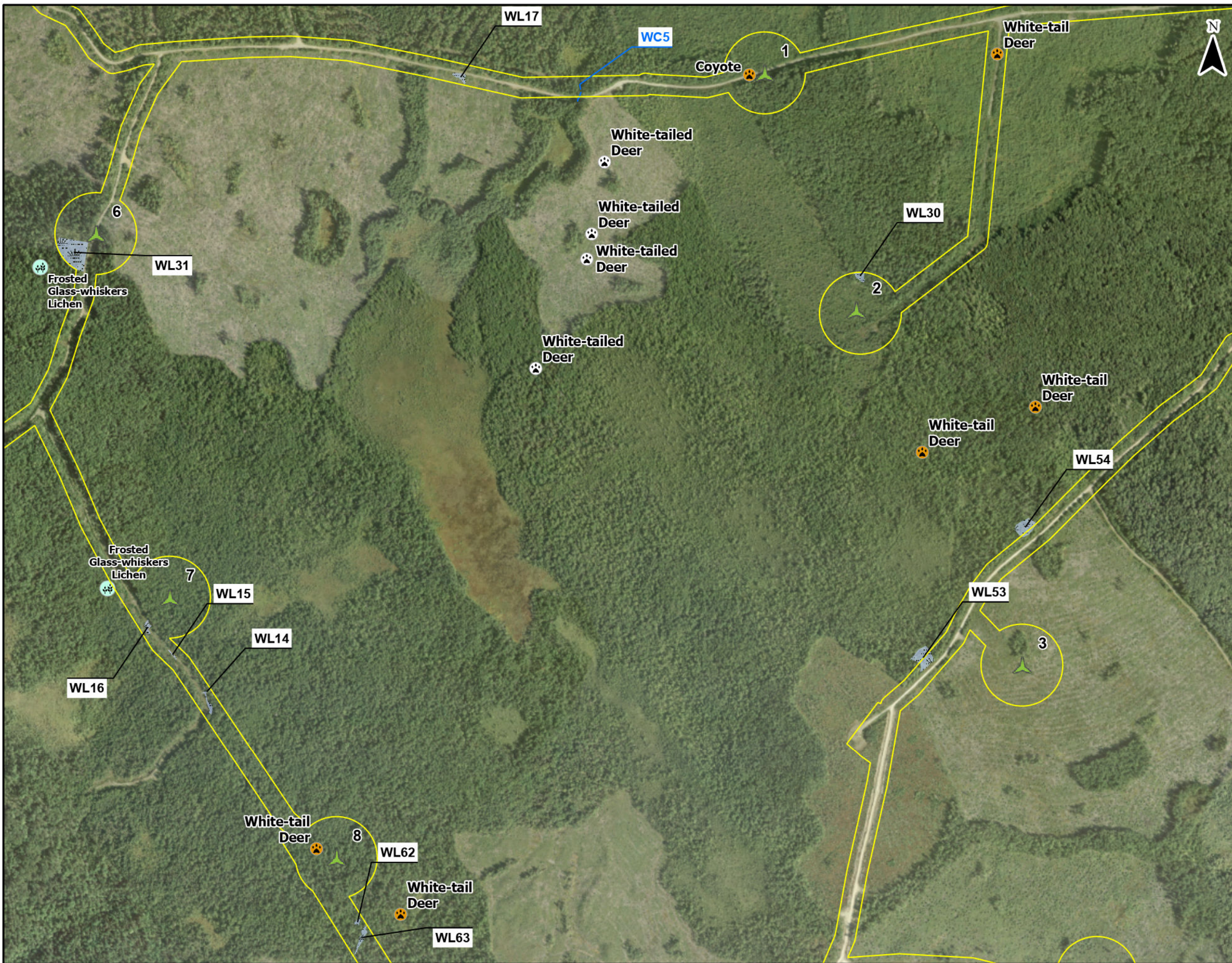
- Proposed Turbine Location
- Assessment Area
- Field Assessed Wetland (WL)
- Wildlife Tracking
- Species Wildlife/ Pellet Survey Pt
- Lichen



Coordinate System: NAD83 UTM Zone 20N Sources: ESRI Basemaps, GeoNOVA, NSTD, HERE, Garmin, USGS, NRCAN

Date: Jan 2023	Project #: 21-7833
Scale: 1:9,000	7.12K
Drawn By: M. Savelle	
Checked By: M. Smith	



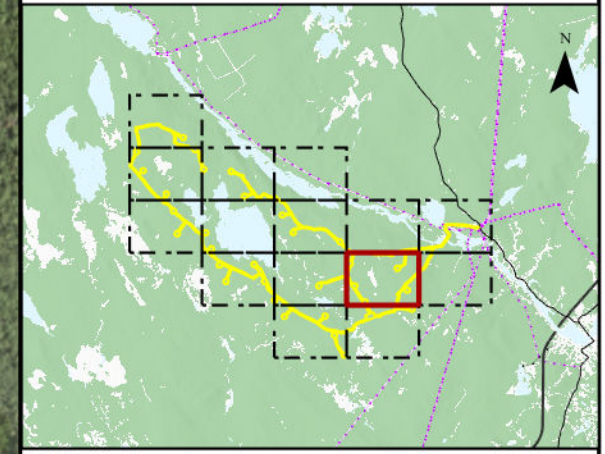


Mersey River Wind Farm
Field Assessments



MERSEY RIVER WIND

- Proposed Turbine Location
- Assessment Area
- Field Assessed Wetland (WL)
- Field Assessed Watercourse (WC)
- Wildlife Tracking
- Species Wildlife/ Pellet Survey Pt
- Lichen



Coordinate System: NAD83 UTM Zone 20N
Sources: ESRI Basemaps, GeoNOVA, NSTD, HERE, Garmin, USGS, NRCAN

Date: Jan 2023	Project #: 21-7833
Scale: 1:9,000	Drawing #: 7.12L
Drawn By: M. Savelle	7.12L
Checked By: M. Smith	



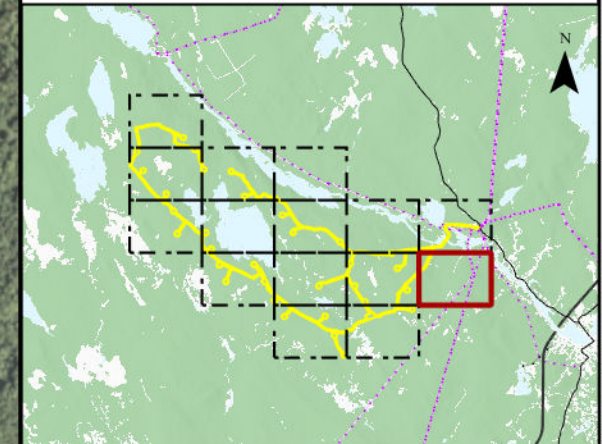


Mersey River Wind Farm
Field Assessments



MERSEY RIVER WIND

- Assessment Area 
- Field Assessed Wetland (WL) 
- Field Assessed Watercourse (WC) 



Coordinate System: NAD83 UTM Zone 20N Sources: ESRI Basemaps, GeoNOVA, NSTD, HERE, Garmin, USGS, NRCAN

Date:	Jan 2023	Project #:	21-7833
Scale:	1:9,000	Drawing #:	7.12M
Drawn By:	M. Savelle		
Checked By:	M. Smith		



Engineering - Surveying - Environmental
Bedford - Antigonish - Moncton - St. John's

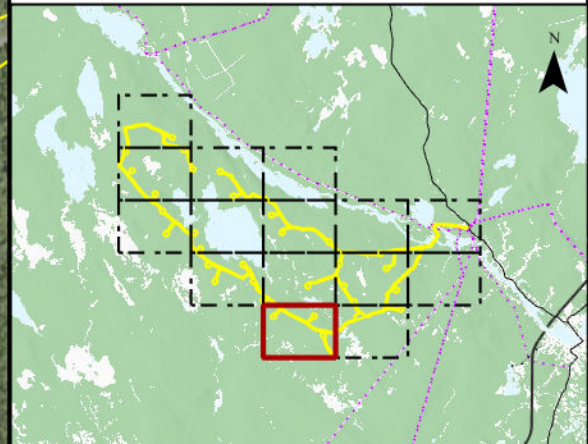


Mersey River Wind Farm
Field Assessments



MERSEY RIVER WIND

- Proposed Turbine Location
- Assessment Area
- Field Assessed Wetland (WL)



Coordinate System: NAD83 UTM Zone 20N Sources: ESRI Basemaps, GeoNOVA, NSTD, HERE, Garmin, USGS, NRCAN

Date: Jan 2023	Project #: 21-7833
Scale: 1:9,000	7.12N
Drawn By: M. Savelle	
Checked By: M. Smith	



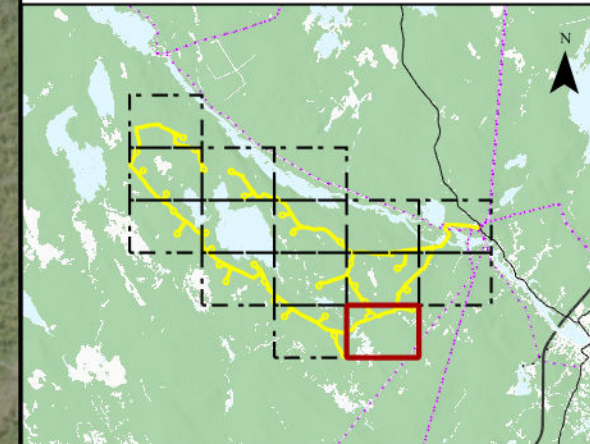


Mersey River Wind Farm
Field Assessments



MERSEY RIVER WIND

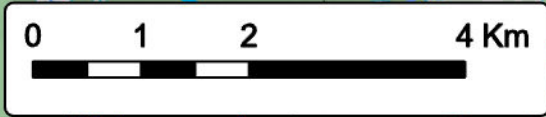
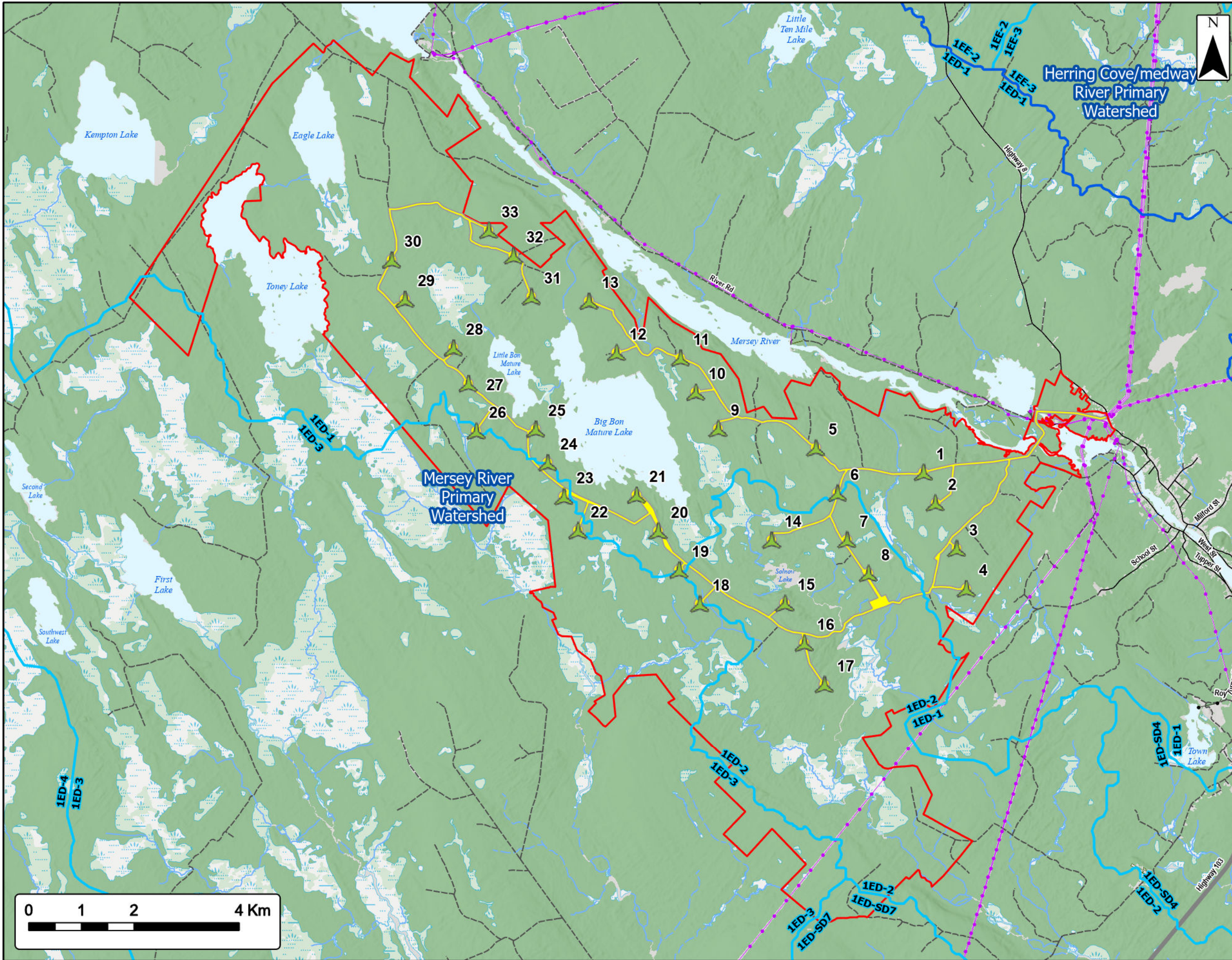
- Proposed Turbine Location
- Assessment Area
- Field Assessed Wetland (WL)
- Field Assessed Watercourse (WC)
- Wildlife Tracking
- Species Wildlife/ Pellet Survey Pt
- Lichen



Coordinate System: NAD83 UTM Zone 20N Sources: ESRI Basemaps, GeoNOVA, NSTD, HERE, Garmin, USGS, NRCAN

Date: Jan 2023	Project #: 21-7833
Scale: 1:9,000	7.120
Drawn By: M. Savelle	
Checked By: M. Smith	





Mersey River Wind Farm

Watersheds



MERSEY RIVER WIND

- Proposed Turbine Location
- Study Area
- Assessment Area
- Secondary Watershed Boundary
- Primary Watershed Boundary
- Transportation**
- Highway
- Road
- Unpaved Road
- Utilities (line)**
- Existing Pipeline
- Existing Transmission Lines
- Water Features**
- Mapped Stream
- Mapped Indefinite Stream
- Mapped Lakes and Rivers
- Mapped Wet Area



Coordinate System: NAD83 UTM Zone 20N Sources: Esri Basemaps, GeoNOVA, SNGIS, NRCan, NSNRR, ACCOG, IBA Canada

Date:	Jan 2023	Project #:	21-7833
Scale:	1:70,000	Drawing #:	7.13
Drawn By:	M. Savelle		
Checked By:	M. Smith		

