

**Mersey River Wind Farm**  
*Overview of Bedrock Geology*



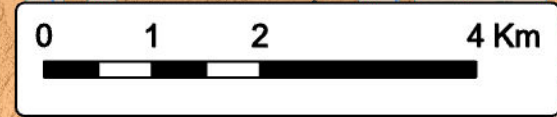
**MERSEY RIVER WIND**

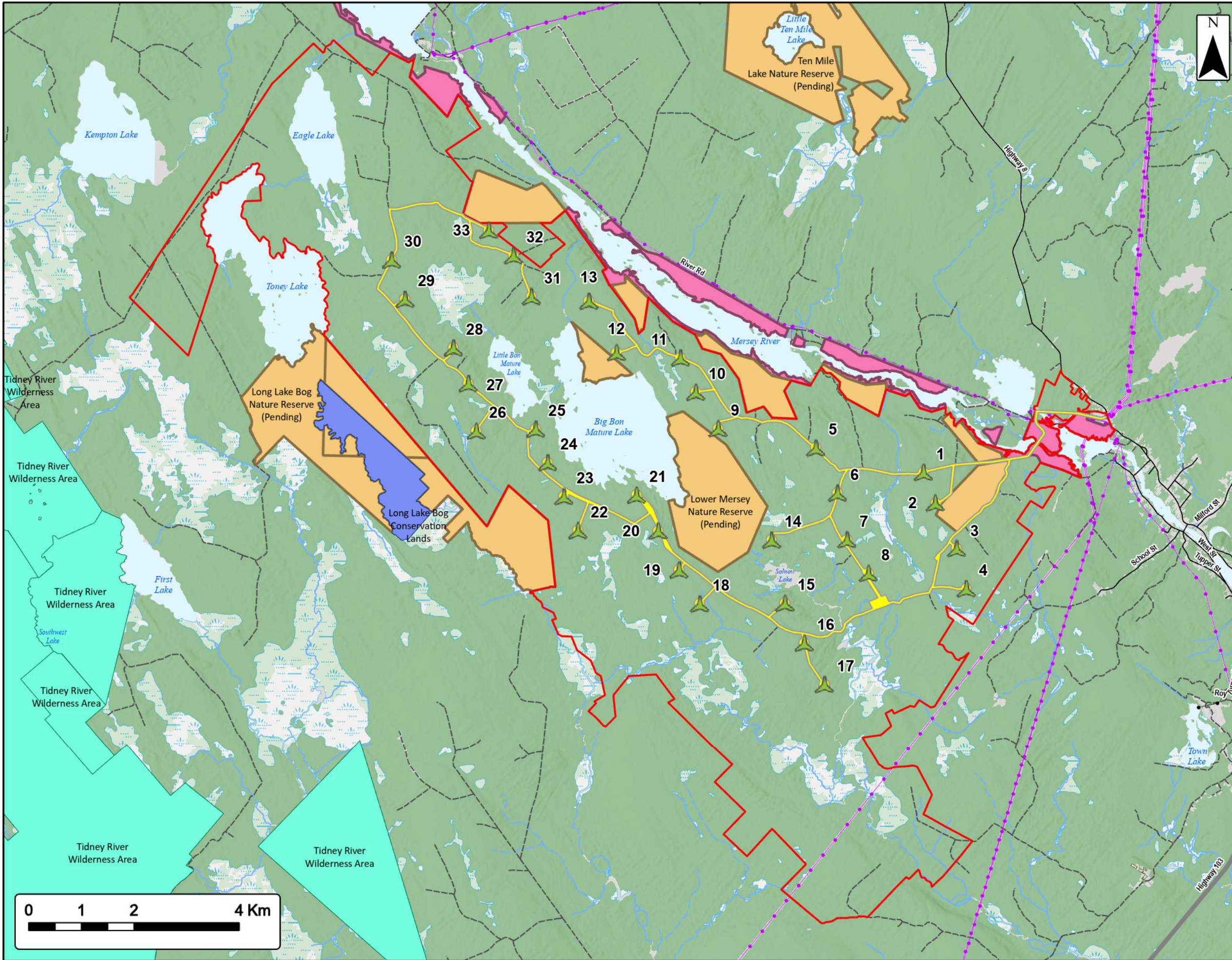
Study Area	
Assessment Area	
<b>Bedrock Geology By Formation</b>	
Halifax Formation	
Goldenville Formation	
<b>Transportation</b>	
Highway	
Road	
Unpaved Road	
<b>Utilities (line)</b>	
Existing Pipeline	
Existing Transmission Lines	
<b>Water Features</b>	
Mapped Stream	
Mapped Indefinite Stream	
Mapped Lakes and Rivers	
Mapped Wet Area	



Coordinate System: NAD83 UTM Zone 20N  
 Sources: Esri Basemaps, GeoNOVA, SNSIS, NRCan, NSNRR, ACCDC, IBA Canada

Date:	Jan 2023	Project #:	21-7833
Scale:	1:70,000	Drawing #:	<b>7.5</b>
Drawn By:	P. Opra		
Checked By:	M. Savelle		





# Mersey River Wind Farm

Restricted and Limited Use Lands



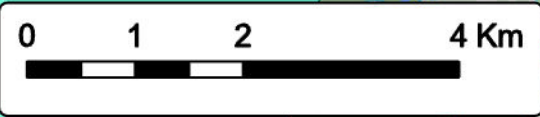
## MERSEY RIVER WIND

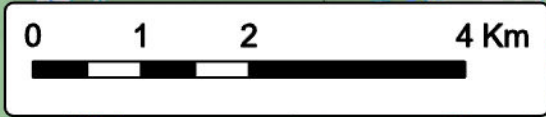
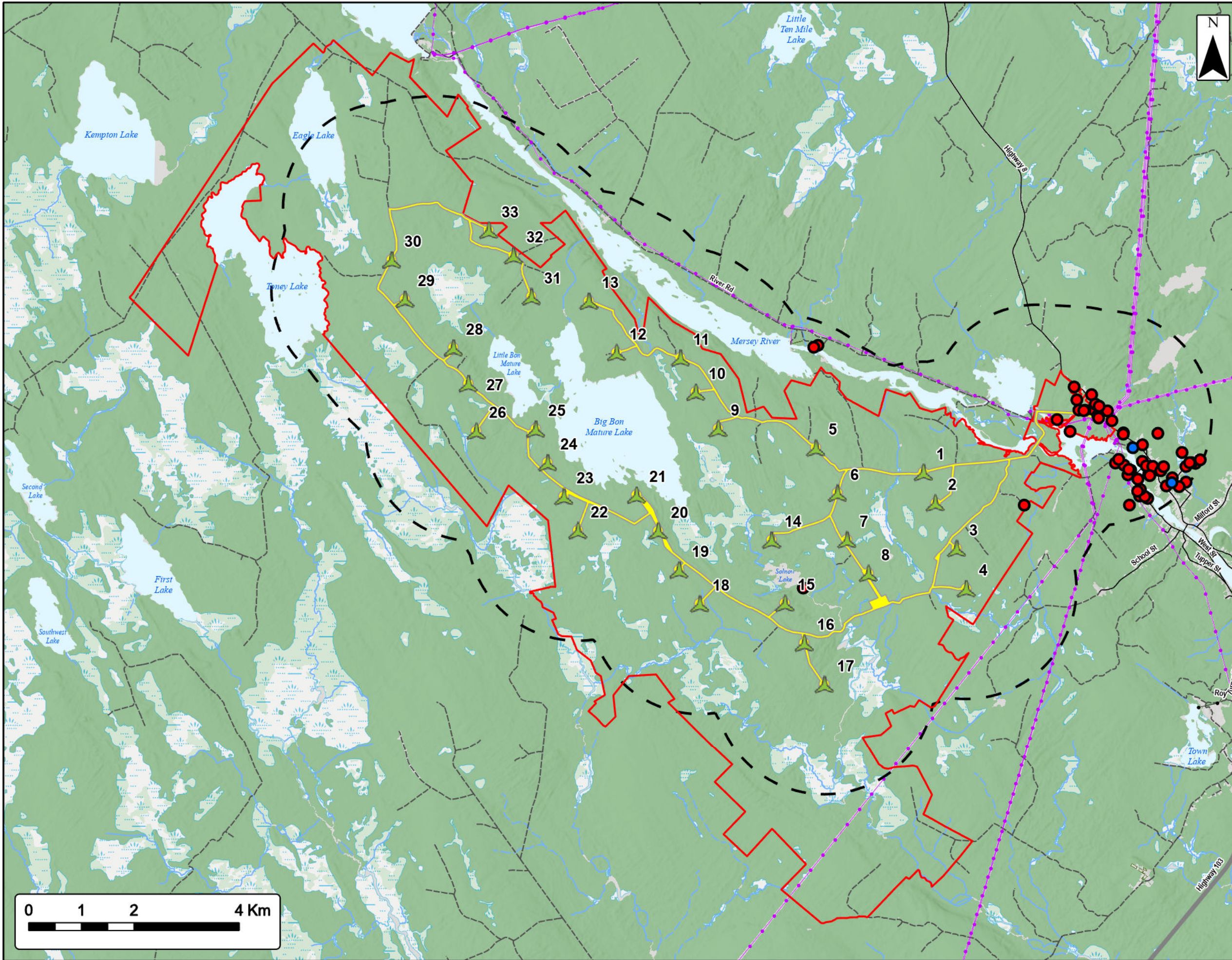
Proposed Turbine Location		Road	
Study Area		Unpaved Road	
Assessment Area		<b>Utilities (line)</b>	
<b>NS Lands Proposed or Pending Protection</b>		Existing Pipeline	
Nature Reserve		Existing Transmission Lines	
Provincial Park		<b>Water Features</b>	
<b>NS Parks and Protected Areas</b>		Mapped Stream	
Wilderness Area		Mapped Indefinite Stream	
Land Trust or Conservation Easement		Mapped Lakes and Rivers	
<b>Transportation</b>		Mapped Wet Area	
Highway			



Coordinate System: NAD83 UTM Zone 20N Sources: Esri Basemaps, GeoNOVA, SNGIS, NRCan, NSNRR, ACCDC, IBA Canada

Date:	Jan 2023	Project #:	21-7833
Scale:	1:70,000	Drawing #:	<b>7.6</b>
Drawn By:	M. Savelle		
Checked By:	M. Smith		





# Mersey River Wind Farm

Groundwater Wells



## MERSEY RIVER WIND

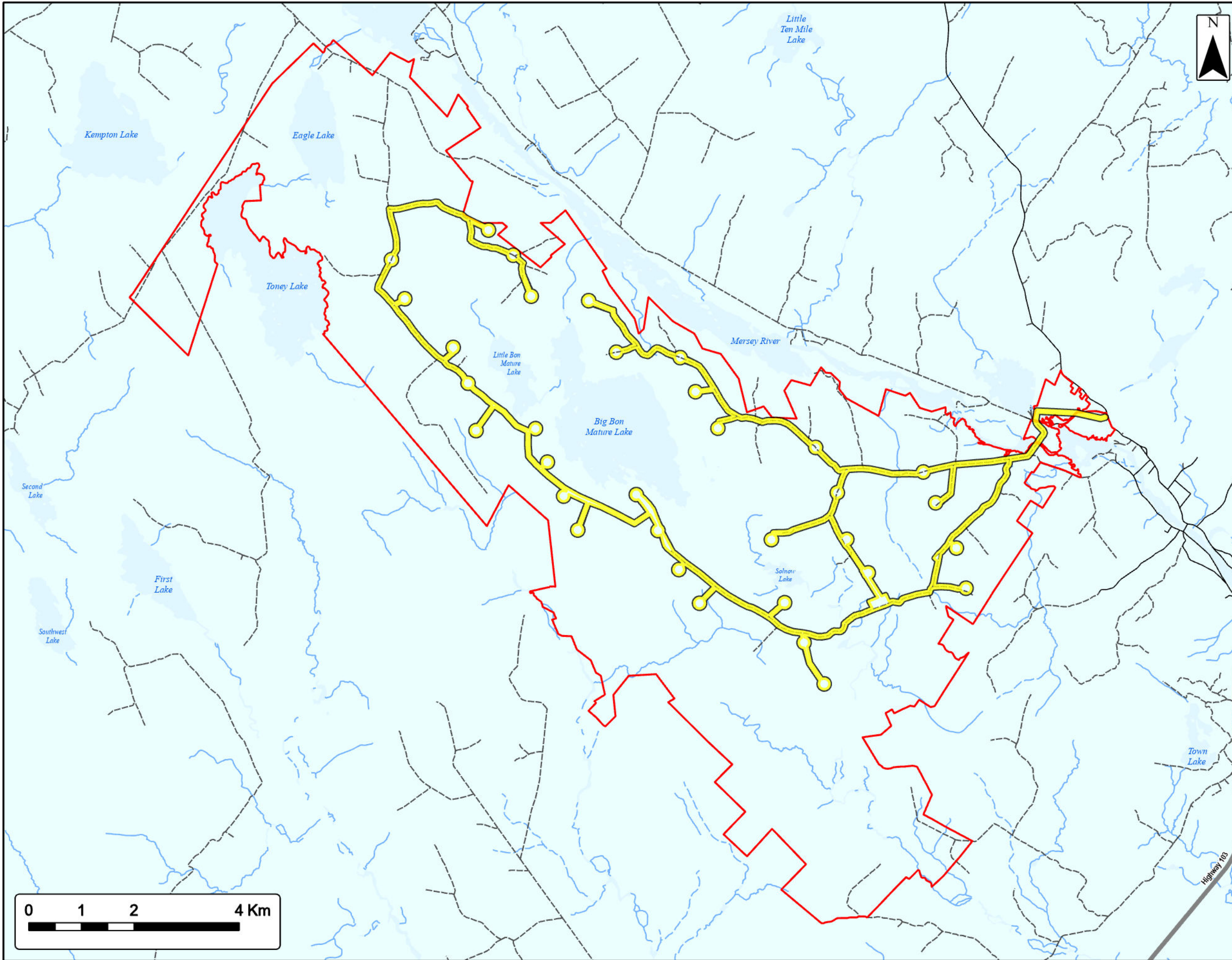
- Proposed Turbine Location
- Study Area
- Assessment Area
- 2 km Assessment Area Buffer
- DRILLED
- DUG
- Transportation**
- Highway
- Road
- Unpaved Road
- Utilities (line)**
- Existing Pipeline
- Existing Transmission Lines
- Water Features**
- Mapped Stream
- Mapped Indefinite Stream
- Mapped Lakes and Rivers
- Mapped Wet Area



Coordinate System: NAD83 UTM Zone 20N Sources: Esri Basemaps, GeoNOVA, SNGIS, NRCan, NSNRR, ACCOG, IBA Canada

Date:	Jan 2023	Project #:	21-7833
Scale:	1:70,000	Drawing #:	<b>7.7</b>
Drawn By:	M. Savelle		
Checked By:	M. Smith		





**Mersey River Wind Farm**  
Overview of Karst Risk



**MERSEY RIVER WIND**

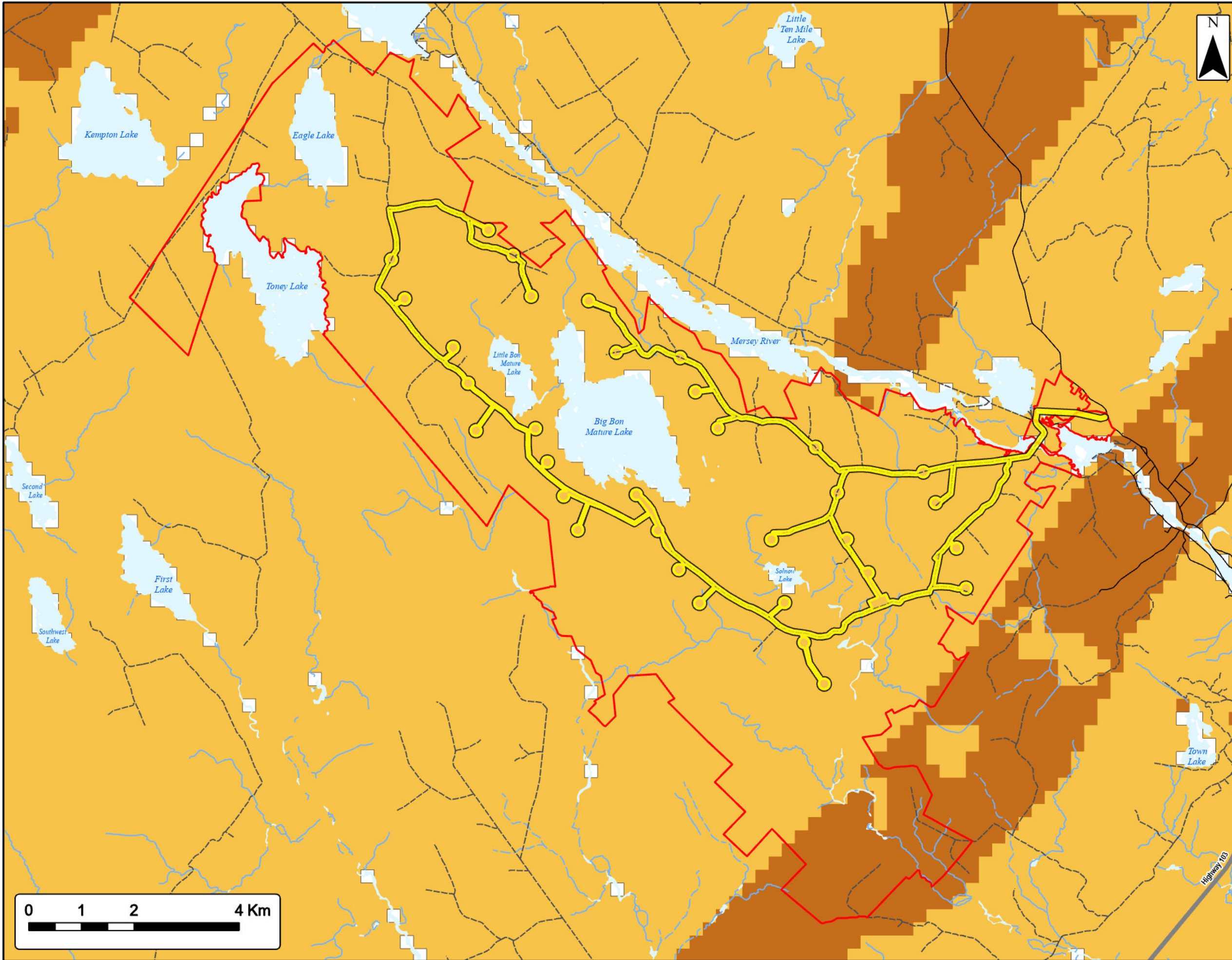
Study Area	
Assessment Area	
<b>Karst Risk</b>	
Low Risk	
<b>Transportation</b>	
Highway	
Road	
Unpaved Road	
<b>Water Features</b>	
Mapped Stream	
Mapped Indefinite Stream	
Mapped Lakes and Rivers	



Coordinate System: NAD83 UTM Zone 20N Sources: Esri Basemaps, GeoNOVA, SNSIS, NRCan, NSNRR, ACCDC, IBA Canada

Date:	Jan 2023	Project #:	21-7833
Scale:	1:70,000	Drawing #:	<b>7.8</b>
Drawn By:	P. Opra		
Checked By:	M. Savelle		





**Mersey River Wind Farm**  
Overview of Radon Potential



**MERSEY RIVER WIND**

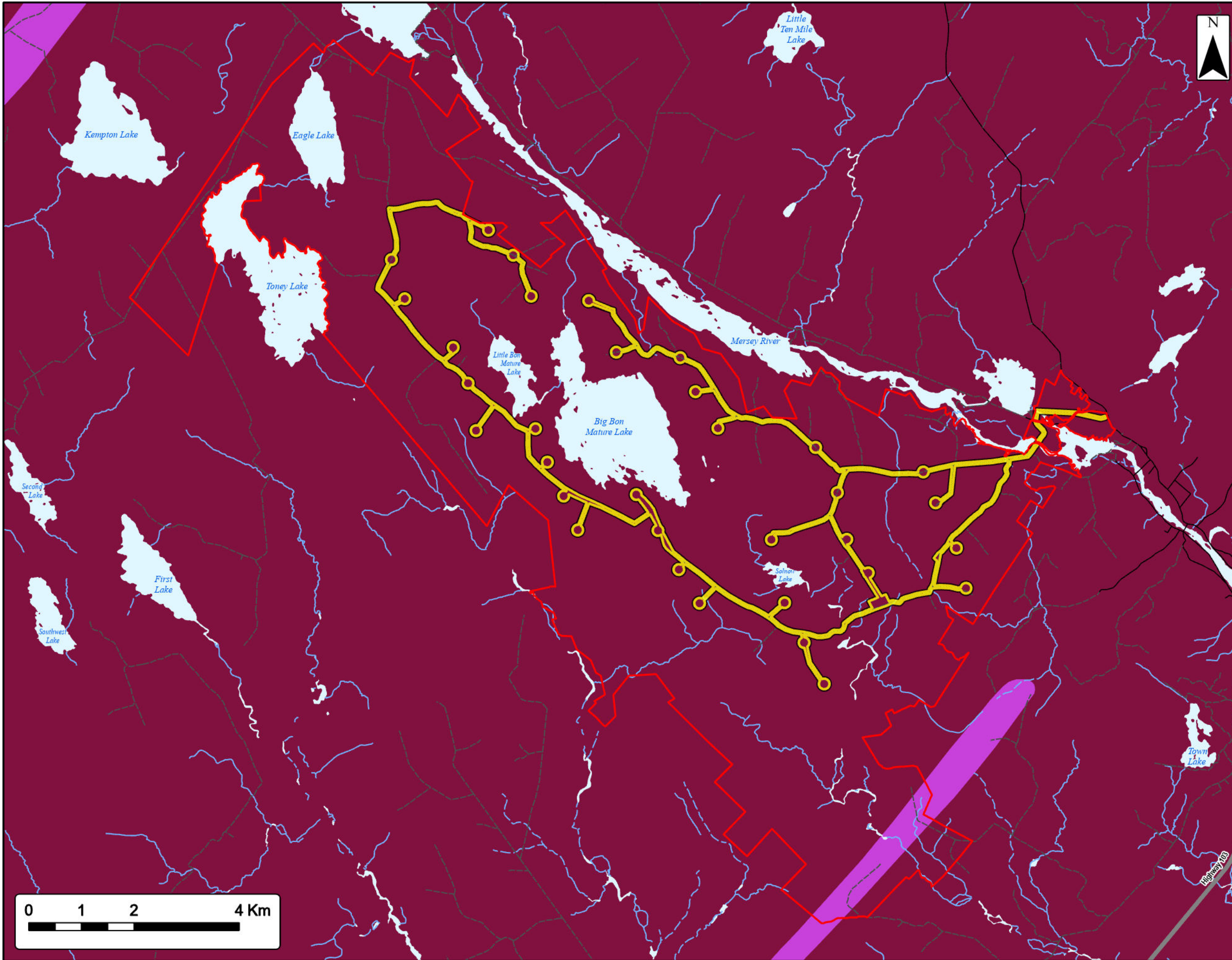
Study Area	
Assessment Area	
<b>Radon Potential</b>	
Medium (121-170)	
Low (11-120)	
Water Feature/No Data (0-10)	
<b>Transportation</b>	
Highway	
Road	
Unpaved Road	
<b>Water Features</b>	
Mapped Stream	
Mapped Indefinite Stream	
Mapped Lakes and Rivers	



Coordinate System: NAD83 UTM Zone 20N Sources: Esri Basemaps, GeoNOVA, SNSIS, NRCan, NSNRR, ACCDC, IBA Canada

Date:	Jan 2023	Project #:	21-7833
Scale:	1:70,000	Drawing #:	<b>7.9</b>
Drawn By:	P. Opra		
Checked By:	M. Savelle		





# Mersey River Wind Farm

Overview of Arsenic Risk



## MERSEY RIVER WIND

Study Area	
Assessment Area	
<b>Arsenic Risk in Bedrock Water Wells</b>	
High Risk	
Medium Risk	
<b>Transportation</b>	
Highway	
Road	
Unpaved Road	
<b>Water Features</b>	
Mapped Stream	
Mapped Indefinite Stream	
Mapped Lakes and Rivers	

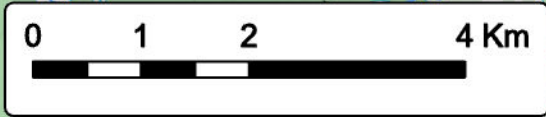
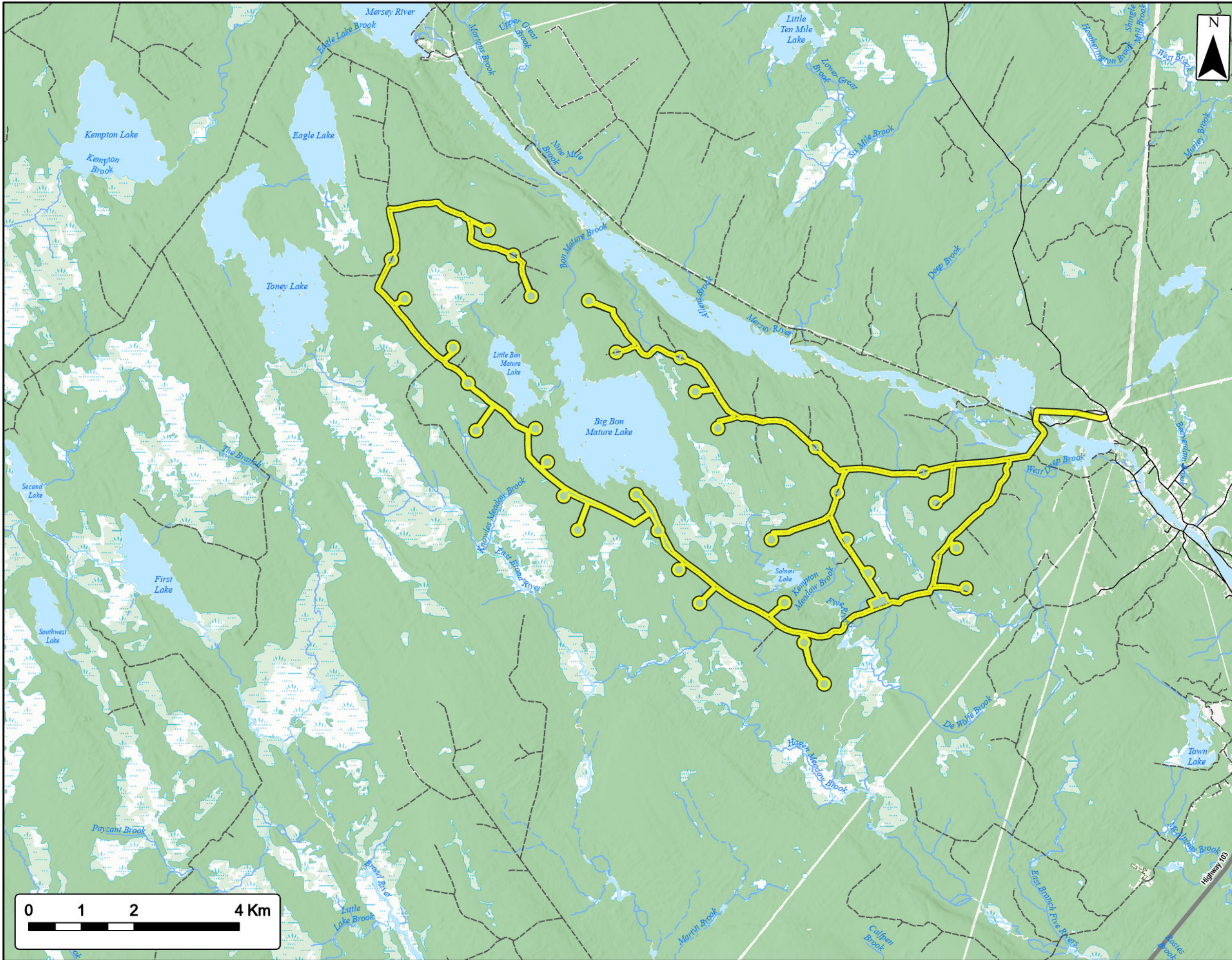


Coordinate System: NAD83 UTM Zone 20N Sources: Esri Basemaps, GeoNOVA, SNSIS, NRCan, NSNRR, ACCDC, IBA Canada

Date:	Jan 2023	Project #:	21-7833
Scale:	1:70,000	Drawing #:	<b>7.10</b>
Drawn By:	P. Opra		
Checked By:	M. Savelle		



Engineering - Surveying - Environmental  
Bedford - Antigonish - Moncton - St. John's



**Mersey River Wind Farm**  
Desktop Identified Freshwater Features



**MERSEY RIVER WIND**

Assessment Area	
<b>Transportation</b>	
Highway	
Road	
Unpaved Road	
<b>Water Features</b>	
Mapped Stream	
Mapped Indefinite Stream	
Mapped Lakes and Rivers	
Mapped Wet Area	



Coordinate System: NAD83 UTM Zone 20N Sources: Esri Basemaps, GeoNOVA, SNSIS, NRCAN, NSNRR, ACCDC, IBA Canada

Date:	Jan 2023	Project #:	21-7833
Scale:	1:70,000	Drawing #:	<b>7.11</b>
Drawn By:	P. Opra		
Checked By:	M. Savelle		





**Mersey River Wind Farm**  
Field Assessments



**MERSEY RIVER WIND**

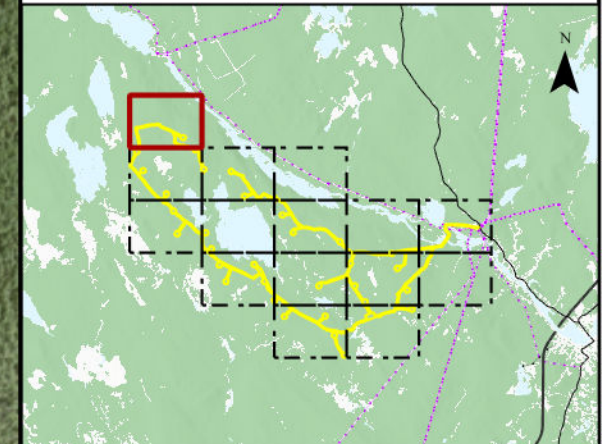
Proposed Turbine Location



Assessment Area



Field Assessed Wetland (WL)



Coordinate System: NAD83 UTM Zone 20N

Sources: ESRI Basemaps, GeoNOVA, NSTD, HERE, Garmin, USGS, NRCAN

Date:	Jan 2023	Project #:	21-7833
Scale:	1:9,000	Drawing #:	<b>7.12A</b>
Drawn By:	M. Savelle		
Checked By:	M. Smith		



Engineering - Surveying - Environmental  
Bedford - Antigonish - Moncton - St. John's



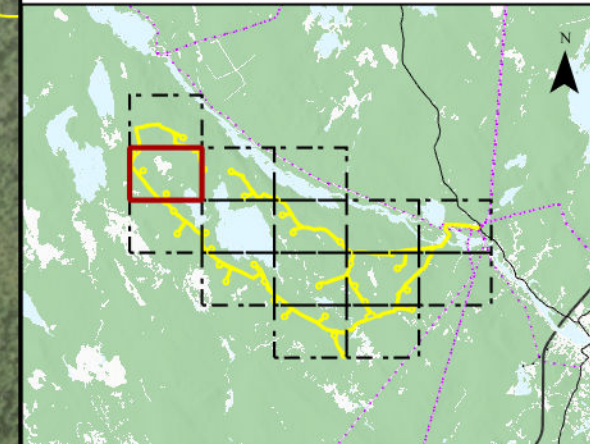


**Mersey River Wind Farm**  
Field Assessments



**MERSEY RIVER WIND**

- Proposed Turbine Location
- Assessment Area
- Field Assessed Wetland (WL)
- Wildlife Tracking
- Species Wildlife/ Pellet Survey Pt



Coordinate System: NAD83 UTM Zone 20N Sources: ESRI Basemaps, GeoNOVA, NSTD, HERE, Garmin, USGS, NRCAN

Date:	Jan 2023	Project #:	21-7833
Scale:	1:9,000	Drawing #:	<b>7.12B</b>
Drawn By:	M. Savelle		
Checked By:	M. Smith		



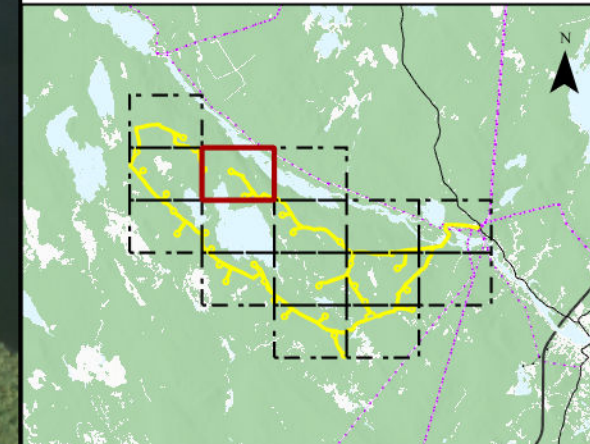


**Mersey River Wind Farm**  
Field Assessments



**MERSEY RIVER WIND**

- Proposed Turbine Location
- Assessment Area
- Field Assessed Wetland (WL)
- Field Assessed Watercourse (WC)



Coordinate System: NAD83 UTM Zone 20N Sources: ESRI Basemaps, GeoNOVA, NSTD, HERE, Garmin, USGS, NRCAN

Date: Jan 2023	Project #: 21-7833
Scale: 1:9,000	<b>7.12C</b>
Drawn By: M. Savelle	
Checked By: M. Smith	



Engineering - Surveying - Environmental  
Bedford - Antigonish - Moncton - St. John's



**Mersey River Wind Farm**  
Field Assessments

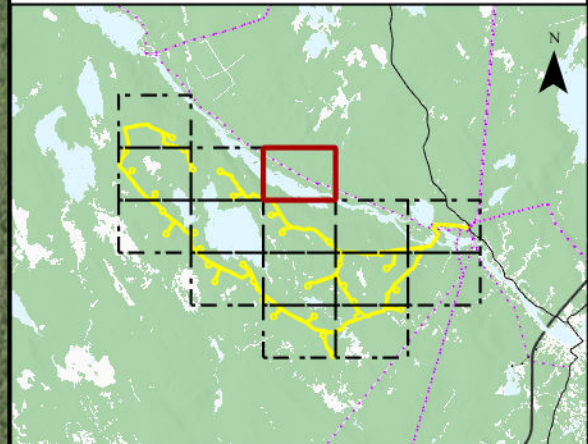


**MERSEY RIVER WIND**

Proposed Turbine Location



Assessment Area



Coordinate System: NAD83 UTM Zone 20N

Sources: ESRI Basemaps, GeoNOVA, NSTD, HERE, Garmin, USGS, NRCan

Date:	Jan 2023	Project #:	21-7833
Scale:	1:9,000	Drawing #:	<b>7.12D</b>
Drawn By:	M. Savelle		
Checked By:	M. Smith		



Engineering - Surveying - Environmental  
Bedford - Antigonish - Moncton - St. John's

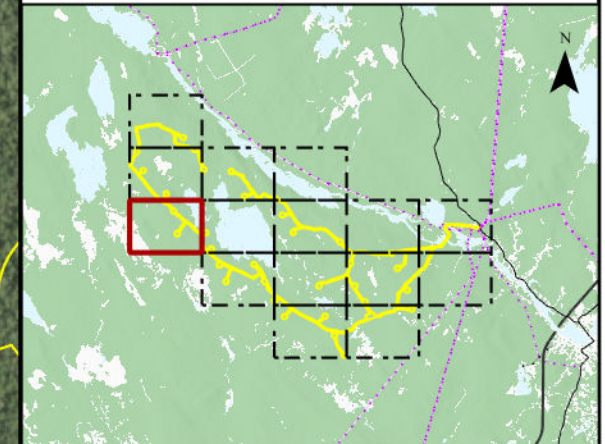


**Mersey River Wind Farm**  
Field Assessments



**MERSEY RIVER WIND**

- Proposed Turbine Location
- Assessment Area
- Field Assessed Wetland (WL)
- Field Assessed Watercourse (WC)
- Species Wildlife/ Pellet Survey Pt
- Lichen



Coordinate System: NAD83 UTM Zone 20N  
Sources: ESRI Basemaps, GeoNOVA, NSTD, HERE, Garmin, USGS, NRCAN

Date: Jan 2023	Project #: 21-7833
Scale: 1:9,000	Drawing #: <b>7.12E</b>
Drawn By: M. Savelle	
Checked By: M. Smith	



Engineering - Surveying - Environmental  
Bedford - Antigonish - Moncton - St. John's