

Mersey River Wind Farm

Overview of Communities



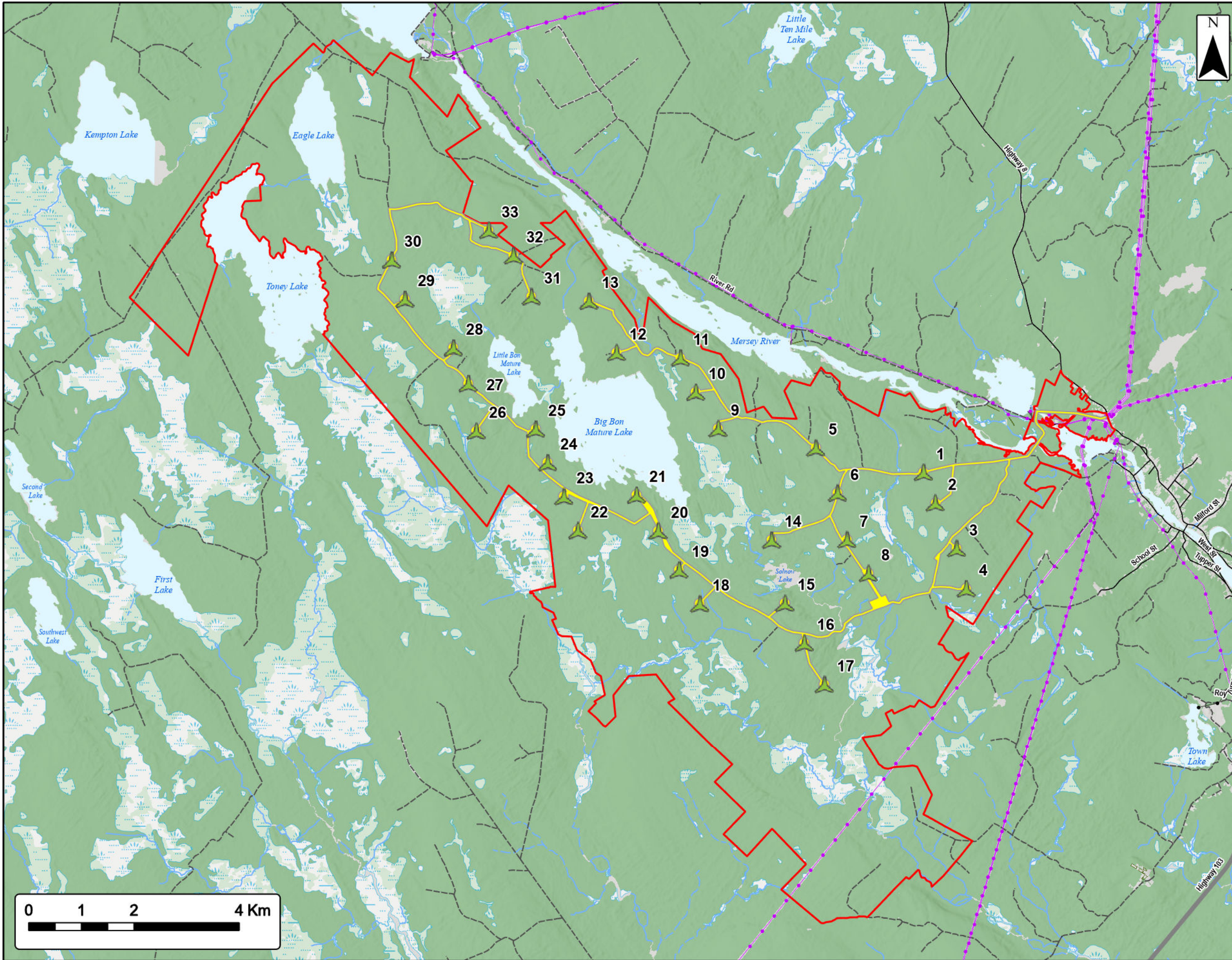
MERSEY RIVER WIND

Study Area	
Assessment Area	
Highway	
Road	
Unpaved Road	
Utilities (line)	
Existing Pipeline	
Existing Transmission Lines	
Water Features	
Mapped Stream	
Mapped Indefinite Stream	
Mapped Lakes and Rivers	
Mapped Wet Area	



Coordinate System: NAD83 UTM Zone 20N		Sources: Esri Basemaps, GeoNOVA, SNSIS, NRCan, NSNRR, ACCDC, IBA Canada	
Date:	Jan 2023	Project #:	21-7833
Scale:	1:150,000	Drawing #:	2.1
Drawn By:	P. Opra		
Checked By:	M. Savelle		





Mersey River Wind Farm

Site Overview



MERSEY RIVER WIND

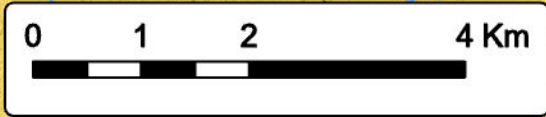
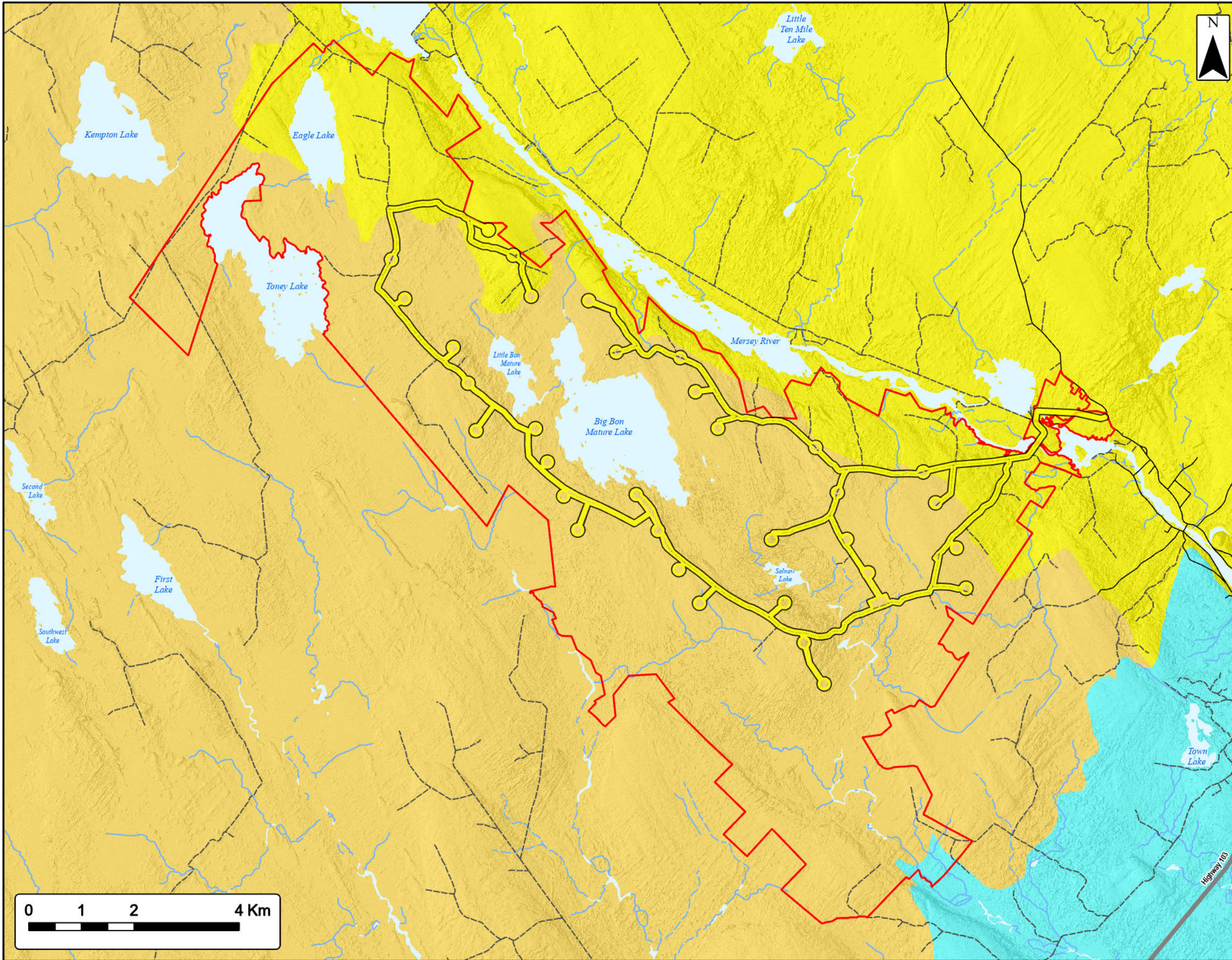
- Proposed Turbine Location
- Study Area
- Assessment Area
- Transportation**
- Highway
- Road
- Unpaved Road
- Utilities (line)**
- Existing Pipeline
- Existing Transmission Lines
- Water Features**
- Mapped Stream
- Mapped Indefinite Stream
- Mapped Lakes and Rivers
- Mapped Wet Area



Coordinate System: NAD83 UTM Zone 20N Sources: Esri Basemaps, GeoNOVA, SNGIS, NRCan, NSNRR, ACCOG, IBA Canada

Date: Jan 2023	Project #: 21-7833
Scale: 1:70,000	Drawing #:
Drawn By: M. Savelle	2.2
Checked By: M. Smith	





Mersey River Wind Farm

Overview of Ecodistricts



MERSEY RIVER WIND

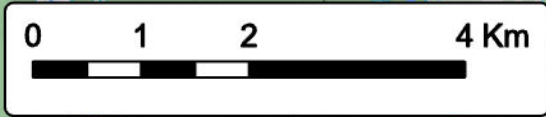
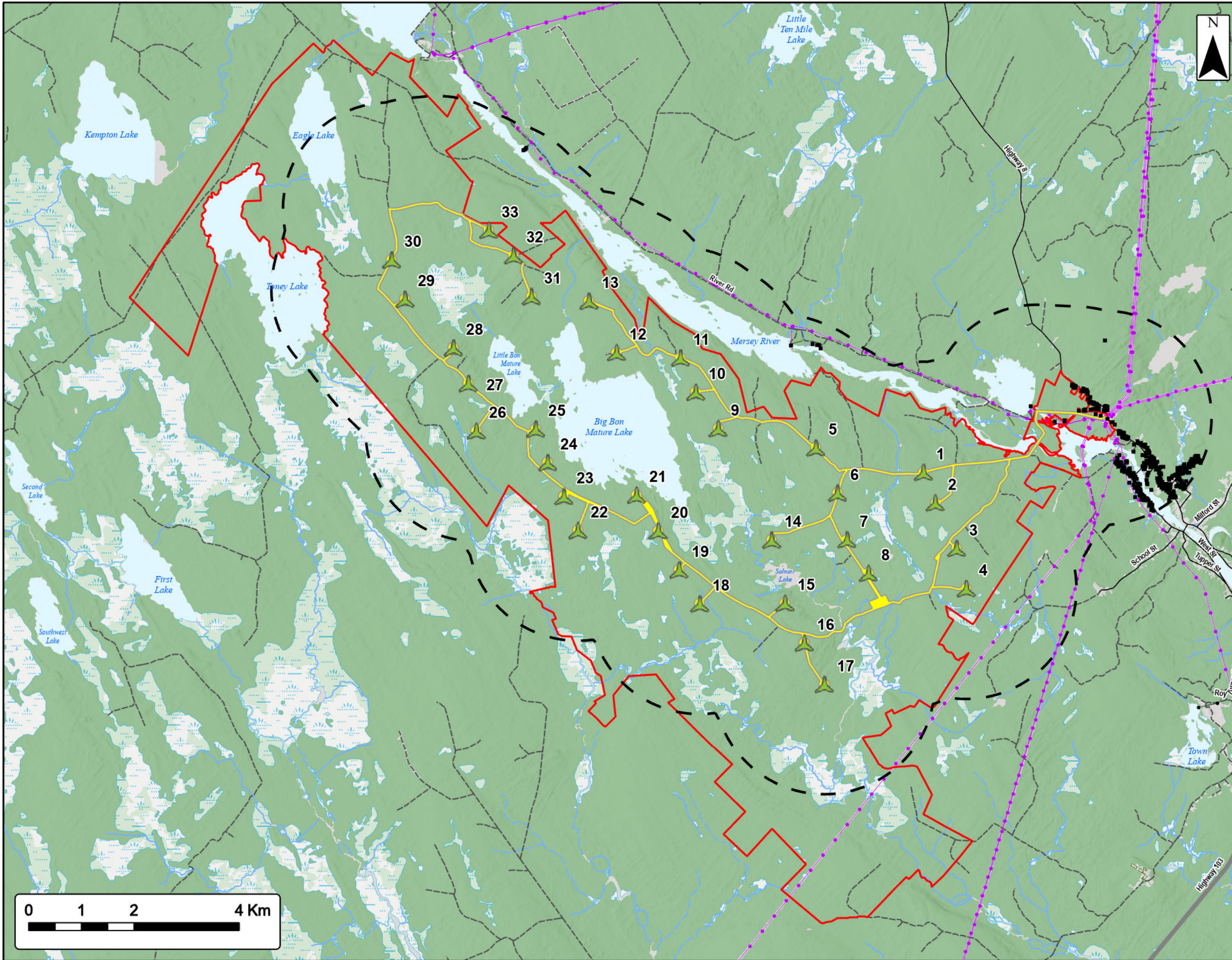
Study Area	
Assessment Area	
Ecodistricts	
Rossignol	
Sable	
South Shore	
Transportation	
Highway	
Road	
Unpaved Road	
Water Features	
Mapped Stream	
Mapped Indefinite Stream	
Mapped Lakes and Rivers	



Coordinate System: NAD83 UTM Zone 20N Sources: Esri Basemaps, GeoNOVA, SNSIS, NRCan, NSNRR, ACCDC, IBA Canada

Date:	Jan 2023	Project #:	21-7833
Scale:	1:70,000	Drawing #:	7.1
Drawn By:	P. Opra		
Checked By:	M. Savelle		





Mersey River Wind Farm

Receptors



MERSEY RIVER WIND

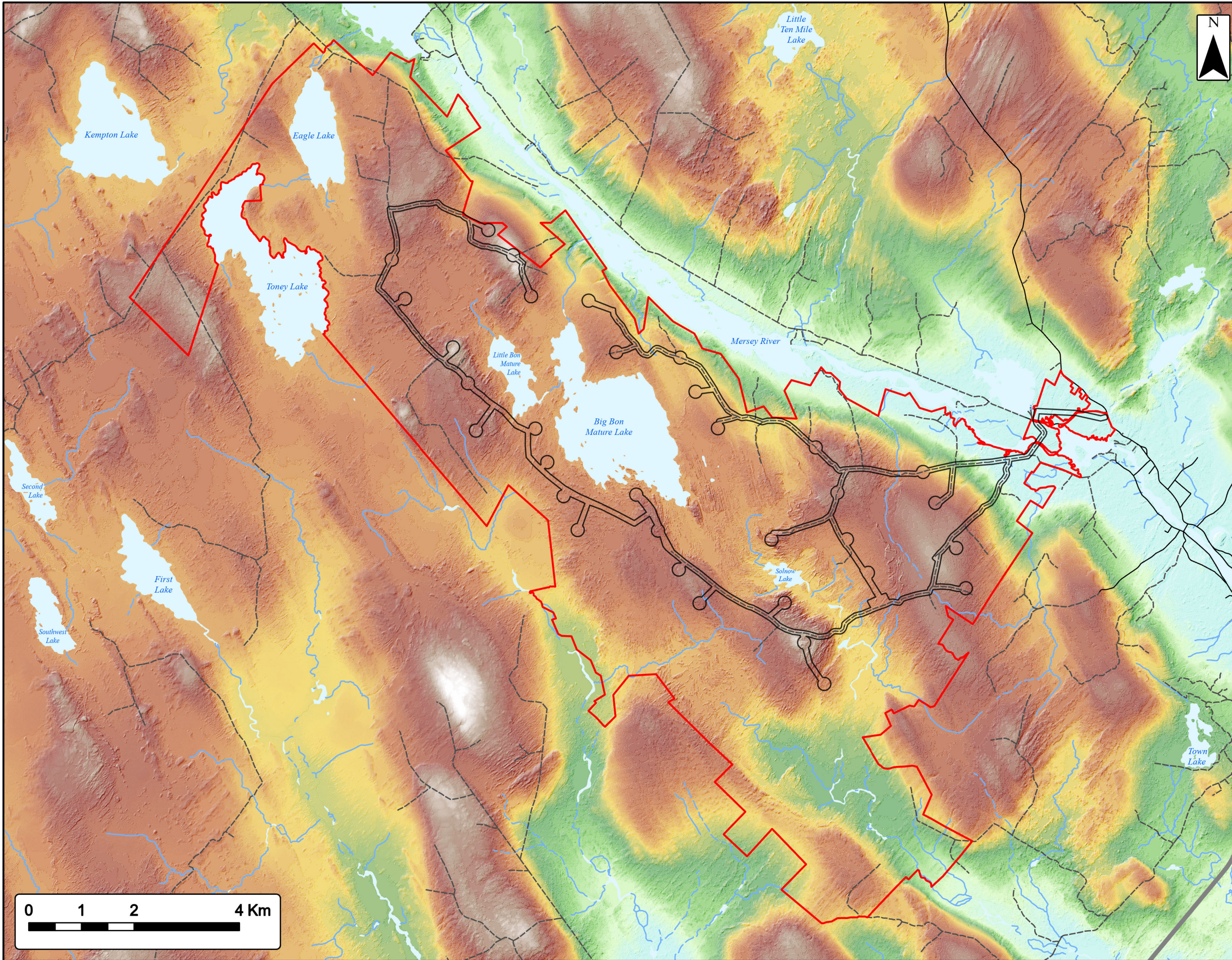
- Proposed Turbine Location
- Study Area
- Assessment Area
- Non Participating Buildings with 2km of the Assessment Area
- 2 km Assessment Area Buffer
- Transportation**
- Highway
- Road
- Unpaved Road
- Utilities (line)**
- Existing Pipeline
- Existing Transmission Lines
- Water Features**
- Mapped Stream
- Mapped Indefinite Stream
- Mapped Lakes and Rivers
- Mapped Wet Area



Coordinate System: NAD83 UTM Zone 20N Sources: Esri Basemaps, GeoNOVA, SNGIS, NRCan, NSNRR, ACCDC, IBA Canada

Date:	Jan 2023	Project #:	21-7833
Scale:	1:70,000	Drawing #:	7.2
Drawn By:	M. Savelle		
Checked By:	M. Smith		





Mersey River Wind Farm

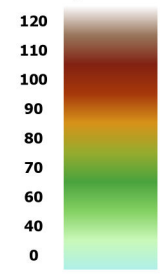
Overview of Geomorphology



MERSEY RIVER WIND

Study Area	
Assessment Area	
Transportation	
Highway	
Road	
Unpaved Road	
Water Features	
Mapped Stream	
Mapped Indefinite Stream	
Mapped Lakes and Rivers	

Elevation (Metres ASL)

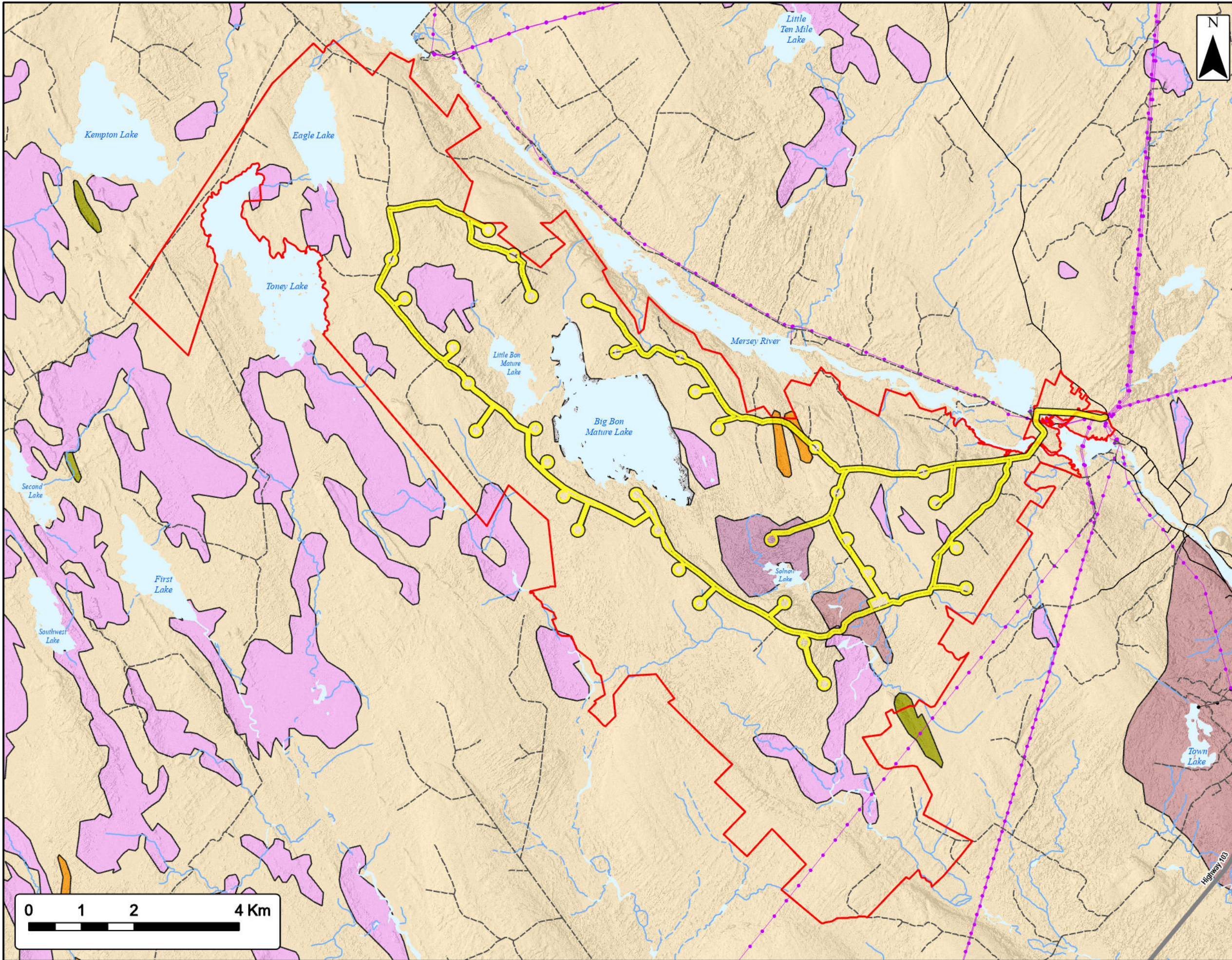


Coordinate System: NAD83 UTM Zone 20N Sources: Esri Basemaps, GeoNOVA, SNSIS, NRCan, NSNRR, ACCDC, IBA Canada

Date:	Jan 2023	Project #:	21-7833
Scale:	1:70,000	Drawing #:	7.3
Drawn By:	P. Opra		
Checked By:	M. Savelle		



Engineering - Surveying - Environmental
Bedford - Antigonish - Moncton - St. John's



Mersey River Wind Farm

Overview of Surficial Geology



MERSEY RIVER WIND

Study Area	
Assessment Area	
Surficial Geology By Unit	
Bedrock	
Hummocky Ground Moraine	
Kame Fields and Esker Systems	
Organic Deposits	
Silty Drumlin	
Stony Till Plain	
Transportation	
Highway	
Road	
Unpaved Road	
Utilities (line)	
Existing Pipeline	
Existing Transmission Lines	
Water Features	
Mapped Stream	
Mapped Indefinite Stream	
Mapped Lakes and Rivers	



Coordinate System: NAD83 UTM Zone 20N Sources: Esri Basemaps, GeoNOVA, SNSIS, NRCan, NSNRR, ACCDC, IBA Canada

Date:	Jan 2023	Project #:	21-7833
Scale:	1:70,000	Drawing #:	7.4
Drawn By:	P. Opra		
Checked By:	M. Savelle		

