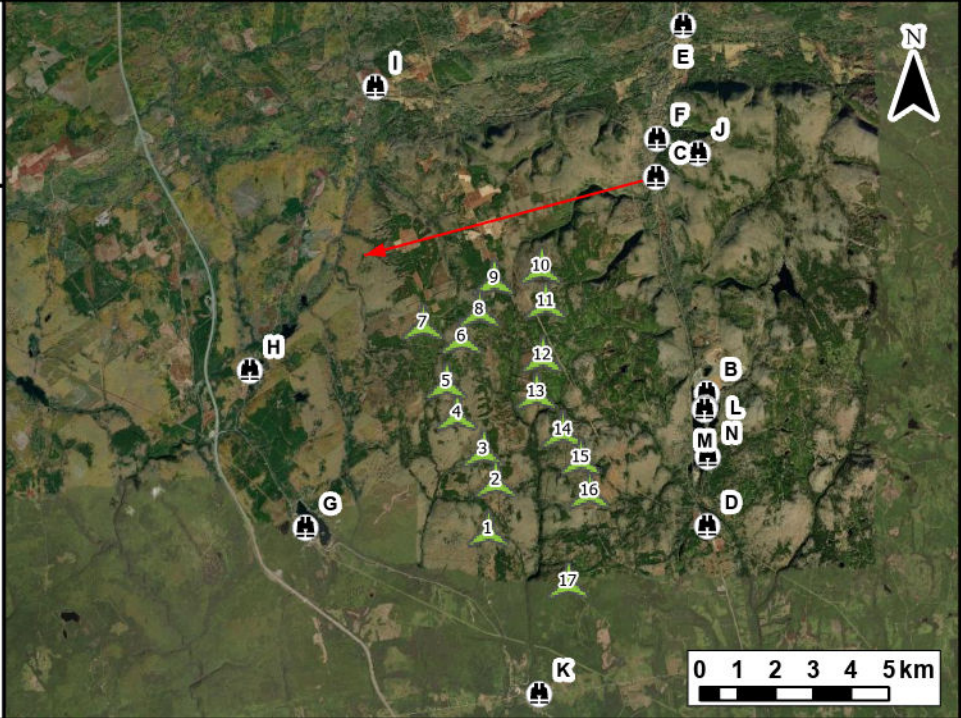




Notes:
 1. Data Sources: GeoNova, Client
 2. Basemaps: Esri, DigitalGlobe, GeoEye, Earthstar Geographics, CNES/Airbus DS, USDA, USGS, AeroGRID, IGN, and the GIS User Community
 3. Projection: NAD83 UTM Zone 20

Legend

- Camera Locations
- Camera Bearing
- Proposed Turbine Location
- Turbines Visible
- Turbines Hidden by Topography
- Turbines Hidden by Foliage



TECHNICAL INFORMATION

Visual Simulation Location:	Highway 4
View Coordinates:	Latitude: 45° 36' 1.000" N Longitude: 63° 33' 44.000" W Easting: 456153.42 m Northing: 5049790.88 m
Distance to Nearest Turbine:	3.8 km
Direction of View:	Southwest, Heading 255°
Camera Make/ Model:	Canon EOS REBEL T7
Lens:	33 mm
Image Resolution:	6000 x 4000
Weather Conditions:	Clear Sky
Date of Photo:	2021/09/20
Time of Photo:	11:17
Photo Credit:	Eric Johnson, Strum Consulting

Higgins Mountain Wind Farm - Visual Simulation Highway 4



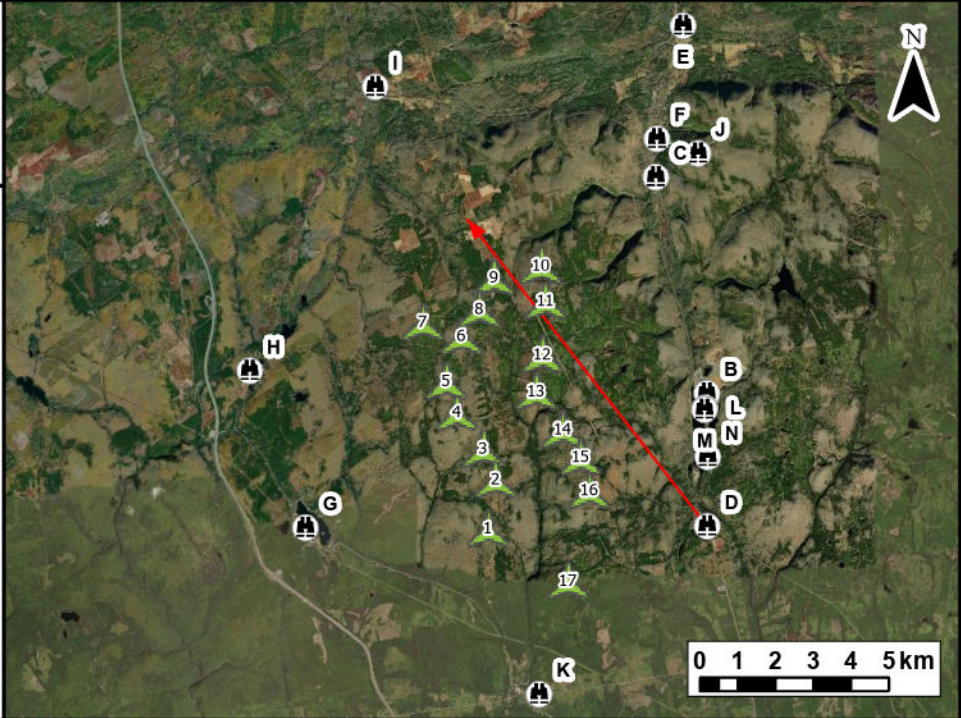
Date:	Project #:
March 2023	20-7376
Scale:	Drawing #:
1:200,000	10.2C
Drawn By:	
M. Savelle	
Checked By:	
M. Smith	



Notes:
 1. Data Sources: GeoNova, Client
 2. Basemaps: Esri, DigitalGlobe, GeoEye, Earthstar Geographics, CNES/Airbus DS, USDA, USGS, AeroGRID, IGN, and the GIS User Community
 3. Projection: NAD83 UTM Zone 20

Legend

- Camera Locations
- Camera Bearing
- Proposed Turbine Location
- Turbines Visible
- Turbines Hidden by Topography
- Turbines Hidden by Foliage



TECHNICAL INFORMATION

Visual Simulation Location:	Hwy 4 - Top of Folly Mountain
View Coordinates:	Latitude: 45° 31' 01.96" N Longitude: 63° 32' 38.44" W Easting: 457510.88 m Northing: 5040551.50 m
Distance to Nearest Turbine:	3.2 km
Direction of View:	Northwest, Heading 322°
Camera Make/ Model:	Canon EOS REBEL T2i
Lens:	50 mm
Image Resolution:	5184 x 2212
Weather Conditions:	Overcast Sky
Date of Photo:	2021/06/03
Time of Photo:	18:30
Photo Credit:	Scott Dickey, Strum Consulting

**Higgins Mountain
 Wind Farm -
 Visual Simulation
 Folly Mountain**



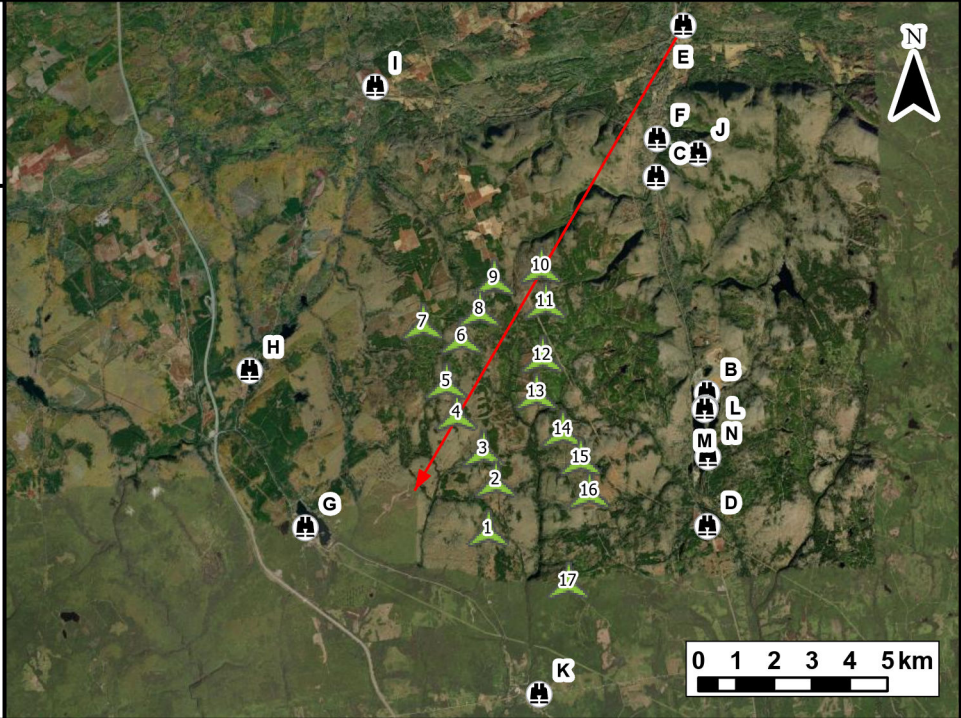
Date:	Project #:
March 2023	20-7376
Scale:	Drawing #:
1:200,000	10.2D
Drawn By:	
M. Savelle	
Checked By:	
M. Smith	



Notes:
 1. Data Sources: GeoNova, Client
 2. Basemaps: Esri, DigitalGlobe, GeoEye, Earthstar Geographics, CNES/Airbus DS, USDA, USGS, AeroGRID, IGN, and the GIS User Community
 3. Projection: NAD83 UTM Zone 20

Legend

- Camera Locations
- Camera Bearing
- Proposed Turbine Location
- Turbines Visible
- Turbines Hidden by Topography
- Turbines Hidden by Foliage



TECHNICAL INFORMATION

Visual Simulation Location:	Highway 4 - Wallace River
View Coordinates:	Latitude: 45° 38' 11.00" N Longitude: 63° 33' 12.00" W Easting: 456874.35 m Northing: 5053797.97 m
Distance to Nearest Turbine:	7.4 km
Direction of View:	Southwest, Heading 210°
Camera Make/ Model:	Canon EOS REBEL T7
Lens:	21 mm
Image Resolution:	6000 x 4000
Weather Conditions:	Clear Sky
Date of Photo:	2021/09/20
Time of Photo:	12:24
Photo Credit:	Eric Johnson, Strum Consulting

**Higgins Mountain
 Wind Farm -
 Visual Simulation
 Wallace River**



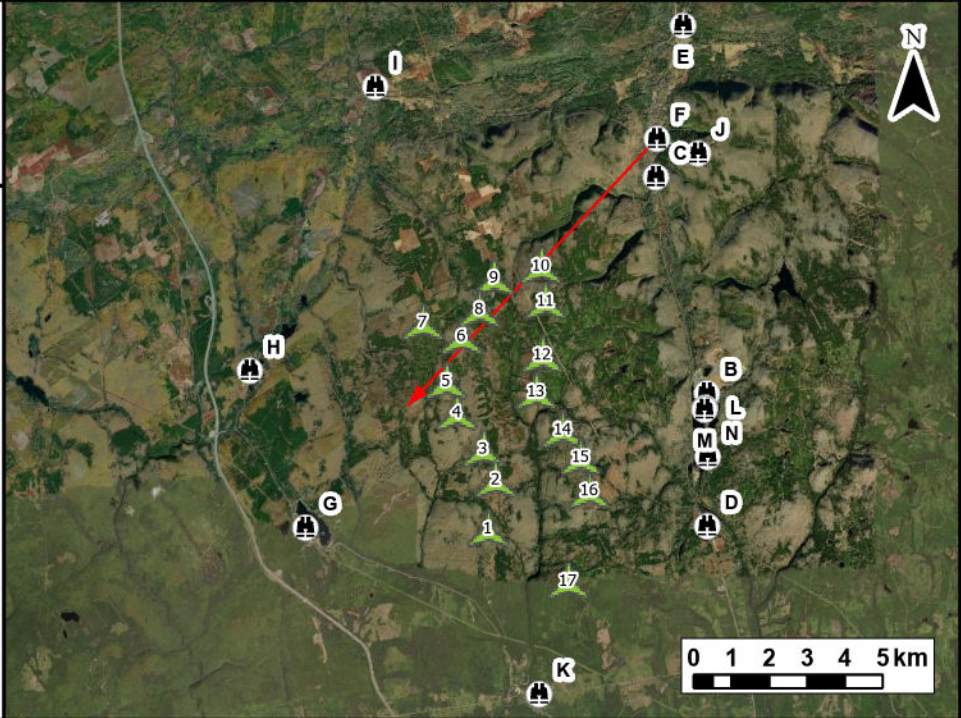
Date:	Project #:
March 2023	20-7376
Scale:	Drawing #:
1:200,000	10.2E
Drawn By:	
M. Savelle	
Checked By:	
M. Smith	



Notes:
 1. Data Sources: GeoNova, Client
 2. Basemaps: Esri, DigitalGlobe, GeoEye, Earthstar Geographics, CNES/Airbus DS, USDA, USGS, AeroGRID, IGN, and the GIS User Community
 3. Projection: NAD83 UTM Zone 20

Legend

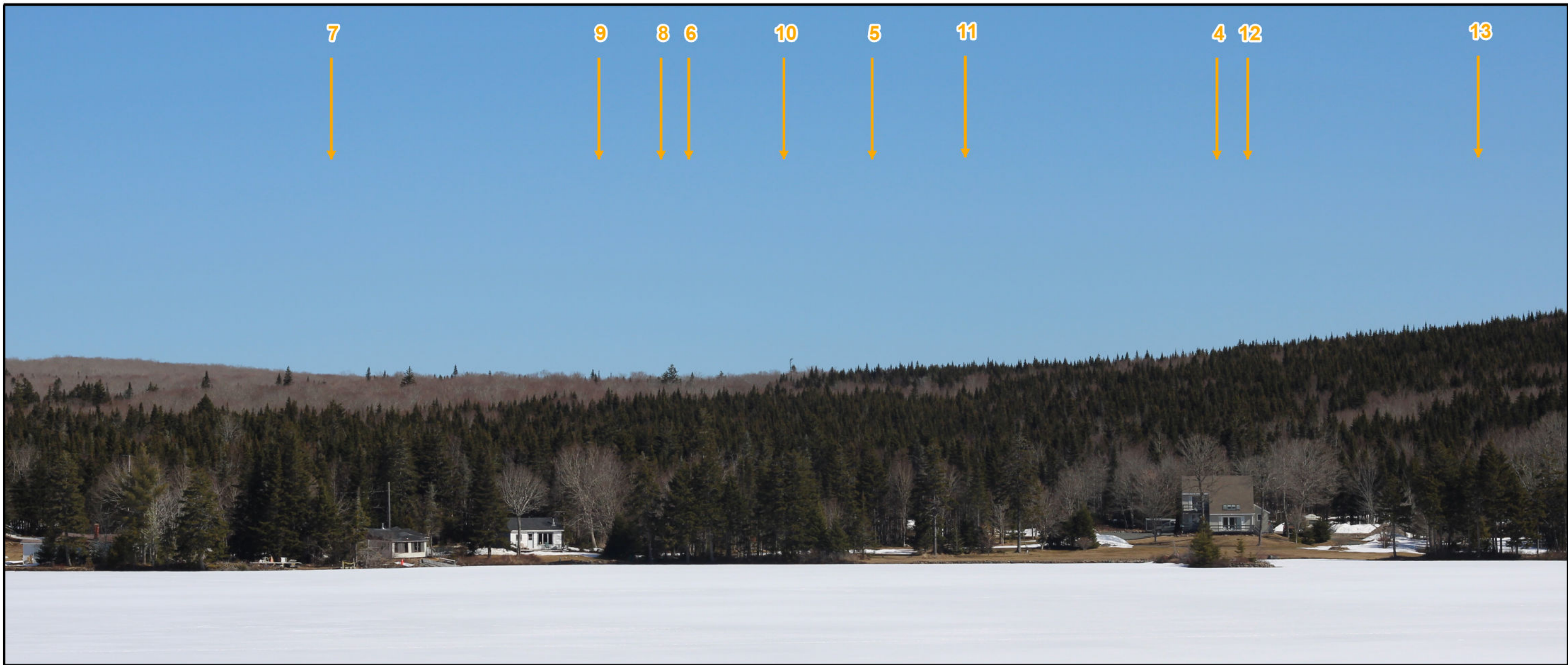
- Camera Locations
- Camera Bearing
- Proposed Turbine Location
- Turbines Visible
- Turbines Hidden by Topography
- Turbines Hidden by Foliage



TECHNICAL INFORMATION	
Visual Simulation Location:	Ski Wentworth Patio
View Coordinates:	Latitude: 45° 36' 33.831" N Longitude: 63° 33' 43.079" W Easting: 456180.33m Northing: 5050802.89 m
Distance to Nearest Turbine:	4.6 km
Direction of View:	Southwest, Heading 223°
Camera Make/ Model:	Canon EOS REBEL T7
Lens:	50 mm
Image Resolution:	6000 x 4000
Weather Conditions:	Clear Sky
Date of Photo:	2022/04/12
Time of Photo:	10:58
Photo Credit:	Scott Dickey, Strum Consulting

Higgins Mountain Wind Farm - Visual Simulation Ski Wentworth Patio

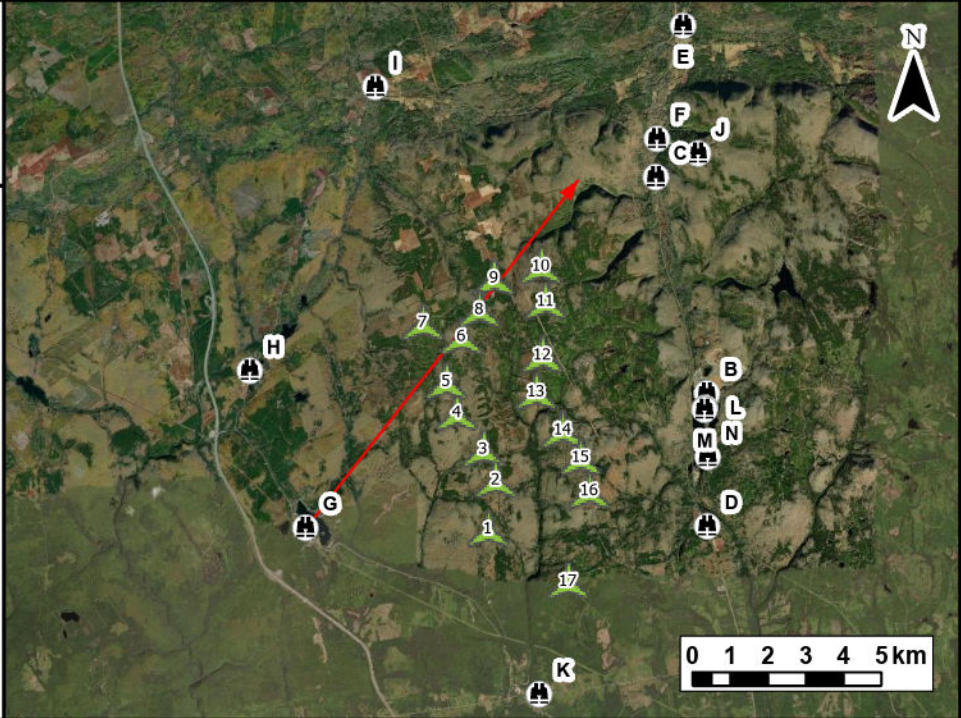
Date:	Project #:
March 2023	20-7376
Scale:	Drawing #:
1:200,000	10.2F
Drawn By:	
M. Savelle	
Checked By:	
M. Smith	



Notes:
 1. Data Sources: GeoNova, Client
 2. Basemaps: Esri, DigitalGlobe, GeoEye, Earthstar Geographics, CNES/Airbus DS, USDA, USGS, AeroGRID, IGN, and the GIS User Community
 3. Projection: NAD83 UTM Zone 20

Legend

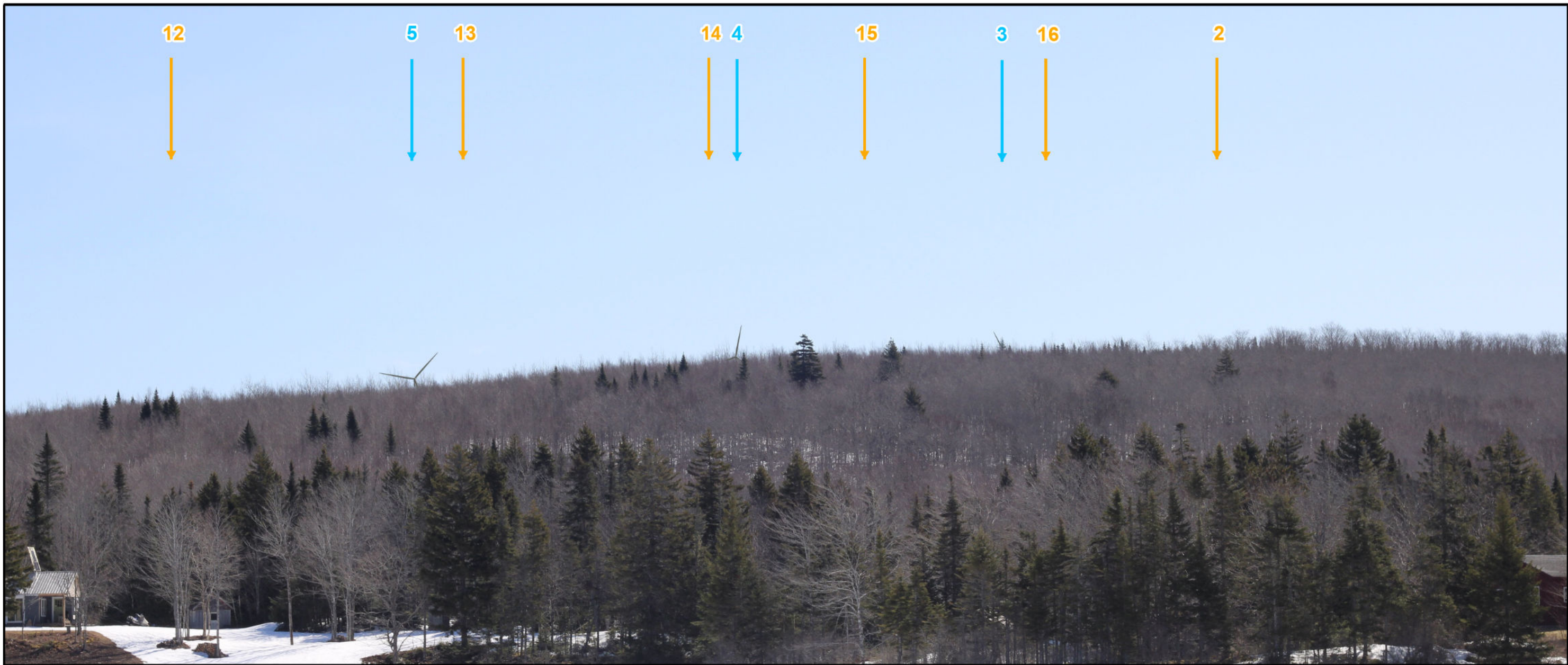
- Camera Locations
- Camera Bearing
- Proposed Turbine Location
- Turbines Visible
- Turbines Hidden by Topography
- Turbines Hidden by Foliage



TECHNICAL INFORMATION	
Visual Simulation Location:	Sutherland Lake
View Coordinates:	Latitude: 45° 30' 58.045" N Longitude: 63° 40' 48.325" W Easting: 446881.77 m Northing: 5040511.68 m
Distance to Nearest Turbine:	4.8 km
Direction of View:	Northeast, Heading 38°
Camera Make/ Model:	Canon EOS REBEL T7
Lens:	50 mm
Image Resolution:	6000 x 4000
Weather Conditions:	Clear Sky
Date of Photo:	2022/04/03
Time of Photo:	11:22
Photo Credit:	Scott Dickey, Strum Consulting

Higgins Mountain Wind Farm - Visual Simulation Sutherland Lake

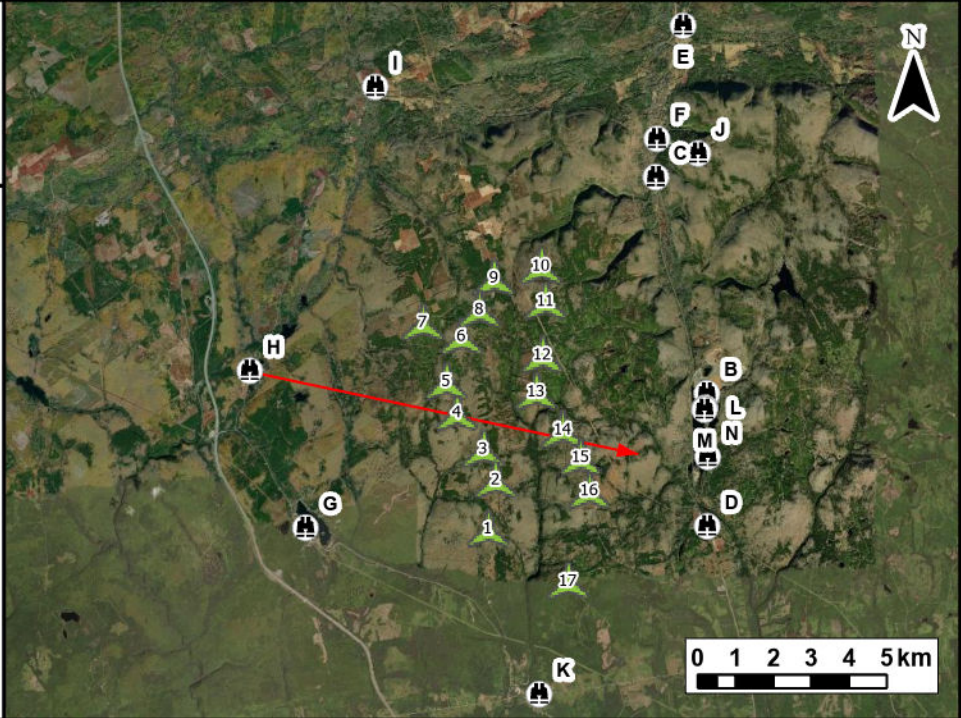
Date:	Project #:
March 2023	20-7376
Scale:	Drawing #:
1:200,000	10.2G
Drawn By:	
M. Savelle	
Checked By:	
M. Smith	



Notes:
 1. Data Sources: GeoNova, Client
 2. Basemaps: Esri, DigitalGlobe, GeoEye, Earthstar Geographics, CNES/Airbus DS, USDA, USGS, AeroGRID, IGN, and the GIS User Community
 3. Projection: NAD83 UTM Zone 20

Legend

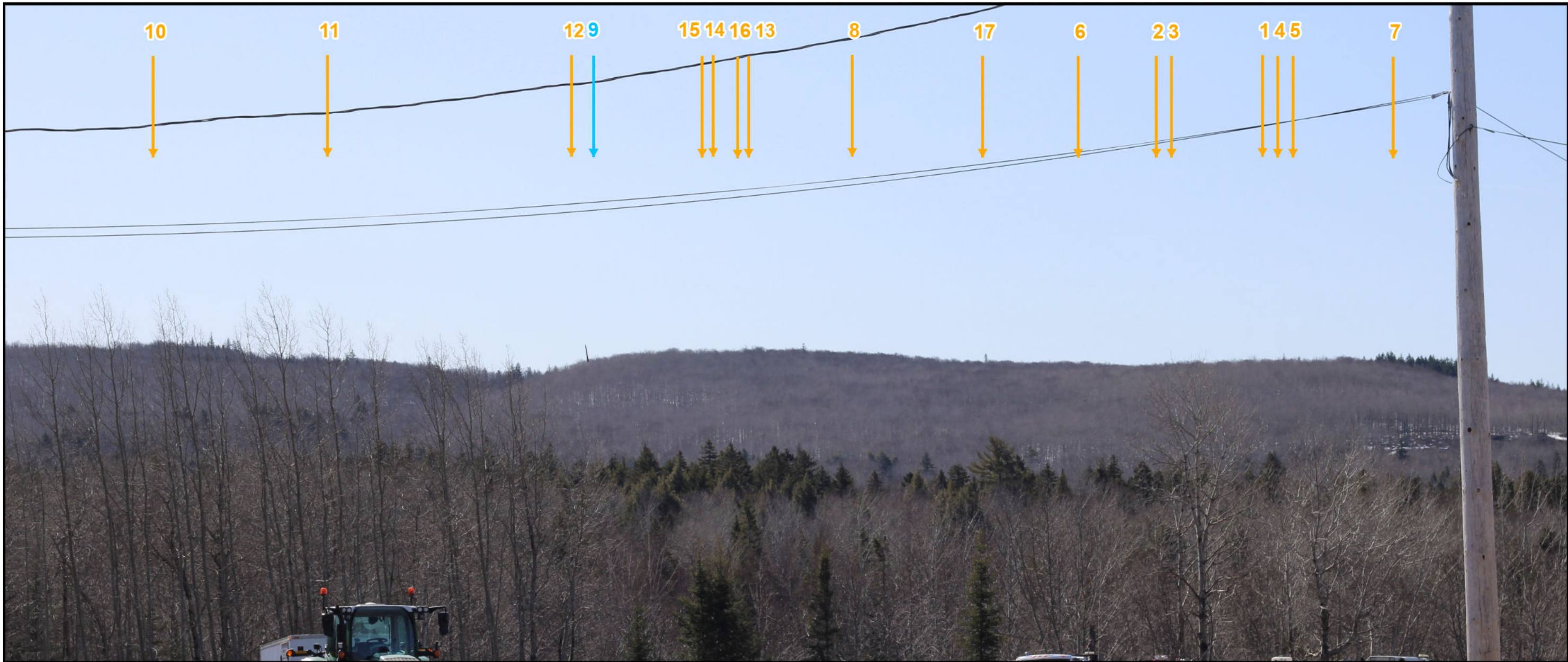
- Camera Locations
- Camera Bearing
- Proposed Turbine Location
- Turbines Visible
- Turbines Hidden by Topography
- Turbines Hidden by Foliage



TECHNICAL INFORMATION	
Visual Simulation Location:	Isaac Lake
View Coordinates:	Latitude: 45° 33' 12.251" N Longitude: 63° 41' 57.970" W Easting: 445406.85 m Northing: 5044666.30 m
Distance to Nearest Turbine:	4.7 km
Direction of View:	East, Heading 102°
Camera Make/ Model:	Canon EOS REBEL T7
Lens:	50 mm
Image Resolution:	6000 x 4000
Weather Conditions:	Clear Sky
Date of Photo:	2022/04/03
Time of Photo:	11:12
Photo Credit:	Scott Dickey, Strum Consulting

Higgins Mountain Wind Farm - Visual Simulation Isaac Lake

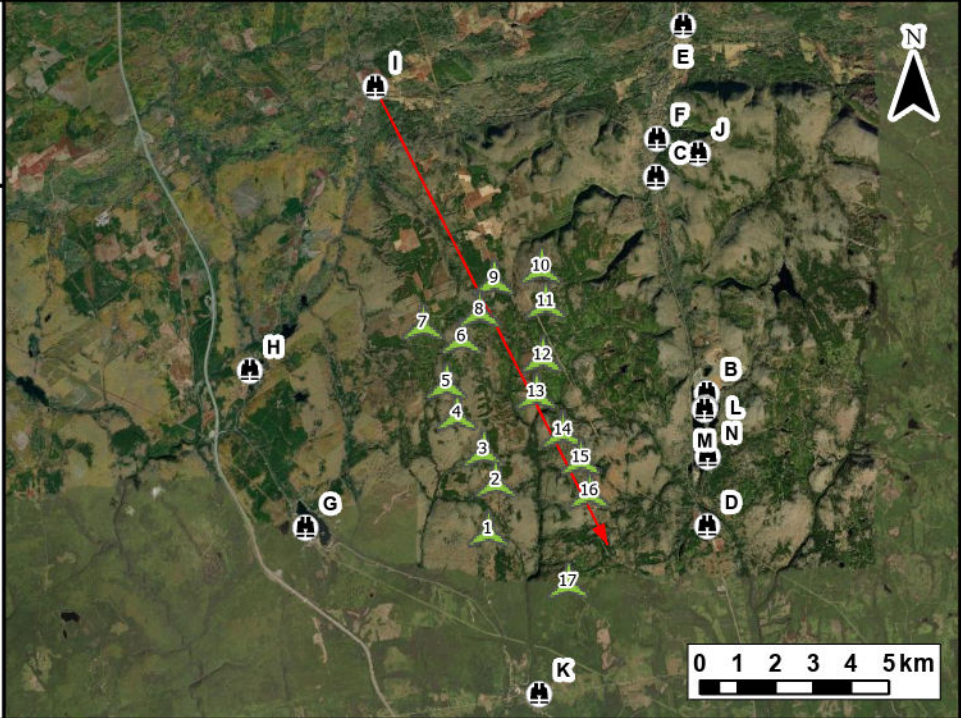
Date:	Project #:
March 2023	20-7376
Scale:	Drawing #:
1:200,000	10.2H
Drawn By:	
M. Savelle	
Checked By:	
M. Smith	



Notes:
 1. Data Sources: GeoNova, Client
 2. Basemaps: Esri, DigitalGlobe, GeoEye, Earthstar Geographics, CNES/Airbus DS, USDA, USGS, AeroGRID, IGN, and the GIS User Community
 3. Projection: NAD83 UTM Zone 20

Legend

- Camera Locations
- Camera Bearing
- Proposed Turbine Location
- Turbines Visible
- Turbines Hidden by Topography
- Turbines Hidden by Foliage



TECHNICAL INFORMATION

Visual Simulation Location:	Westchester Station
View Coordinates:	Latitude: 45° 37' 16.568" N Longitude: 63° 39' 27.586" W Easting: 448729.21 m Northing: 5052178.54 m
Distance to Nearest Turbine:	5.9 km
Direction of View:	Southeast, Heading 153°
Camera Make/ Model:	Canon EOS REBEL T7
Lens:	50 mm
Image Resolution:	6000 x 4000
Weather Conditions:	Clear Sky
Date of Photo:	2022/04/03
Time of Photo:	10:43
Photo Credit:	Scott Dickey, Strum Consulting

**Higgins Mountain
Wind Farm -
Visual Simulation
Westchester Station**



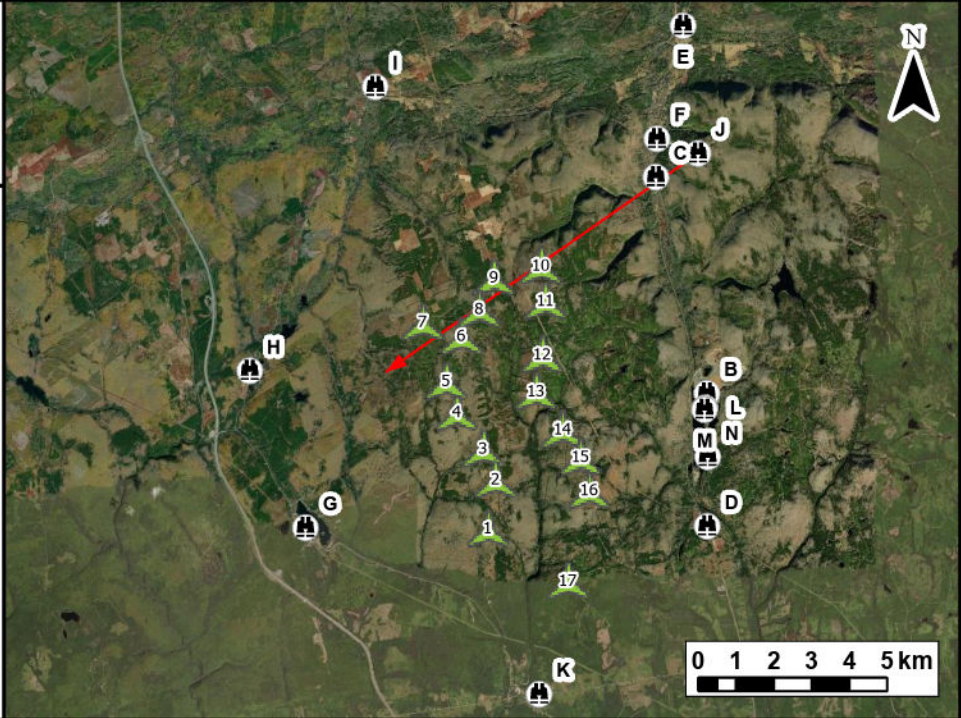
Date:	Project #:
March 2023	20-7376
Scale:	Drawing #:
1:200,000	10.21
Drawn By:	
M. Savelle	
Checked By:	
M. Smith	



Notes:
 1. Data Sources: GeoNova, Client
 2. Basemaps: Esri, DigitalGlobe, GeoEye, Earthstar Geographics, CNES/Airbus DS, USDA, USGS, AeroGRID, IGN, and the GIS User Community
 3. Projection: NAD83 UTM Zone 20

Legend

- Camera Locations
- Camera Bearing
- Proposed Turbine Location
- Turbines Visible
- Turbines Hidden by Topography
- Turbines Hidden by Foliage



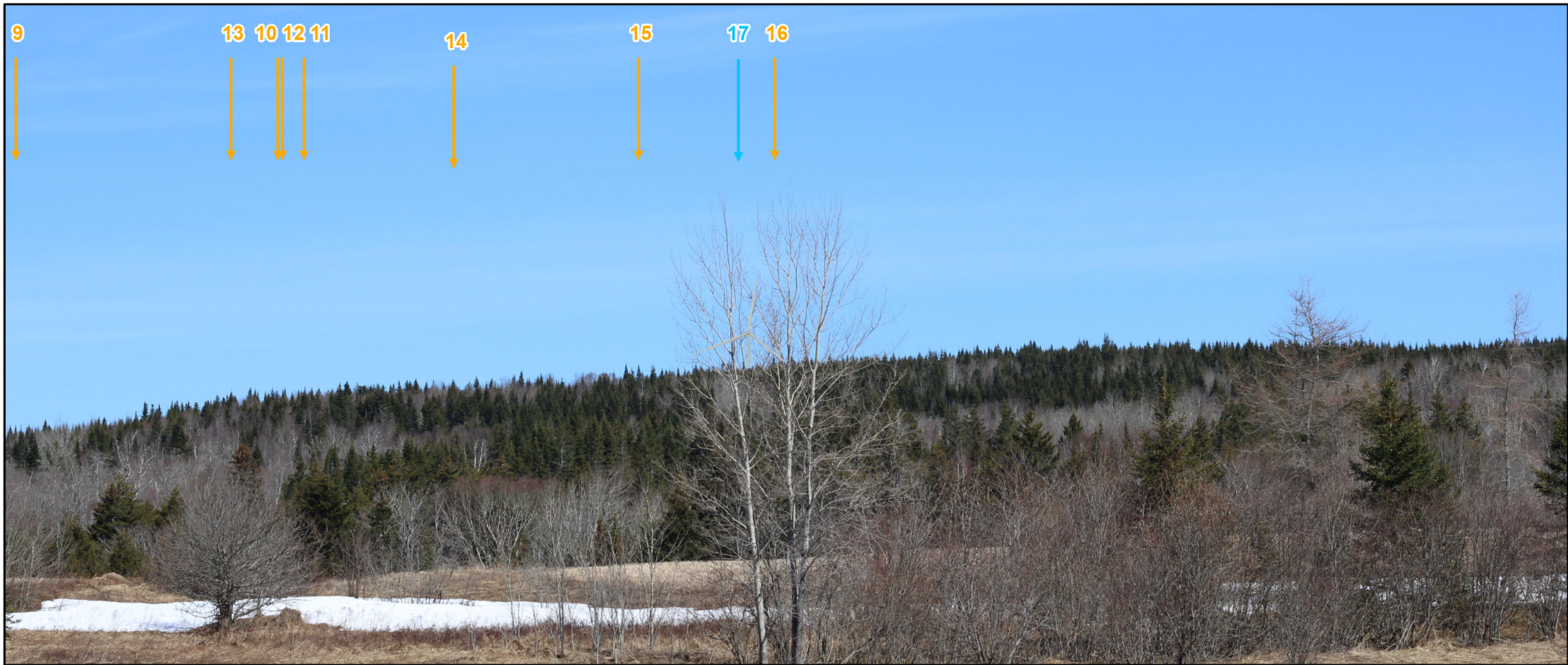
TECHNICAL INFORMATION

Visual Simulation Location:	Ski Wentworth top of Hill
View Coordinates:	Latitude: 45° 36' 21.528" N Longitude: 63° 32' 52.734" W Easting: 457268.34 m Northing: 5050416.71 m
Distance to Nearest Turbine:	5.2 km
Direction of View:	Southwest, Heading 235°
Camera Make/ Model:	Canon EOS REBEL T7
Lens:	50 mm
Image Resolution:	6000 x 4000
Weather Conditions:	Clear Sky
Date of Photo:	2022/04/12
Time of Photo:	11:51
Photo Credit:	Scott Dickey, Strum Consulting

**Higgins Mountain
 Wind Farm -
 Visual Simulation
 Ski Wentworth**



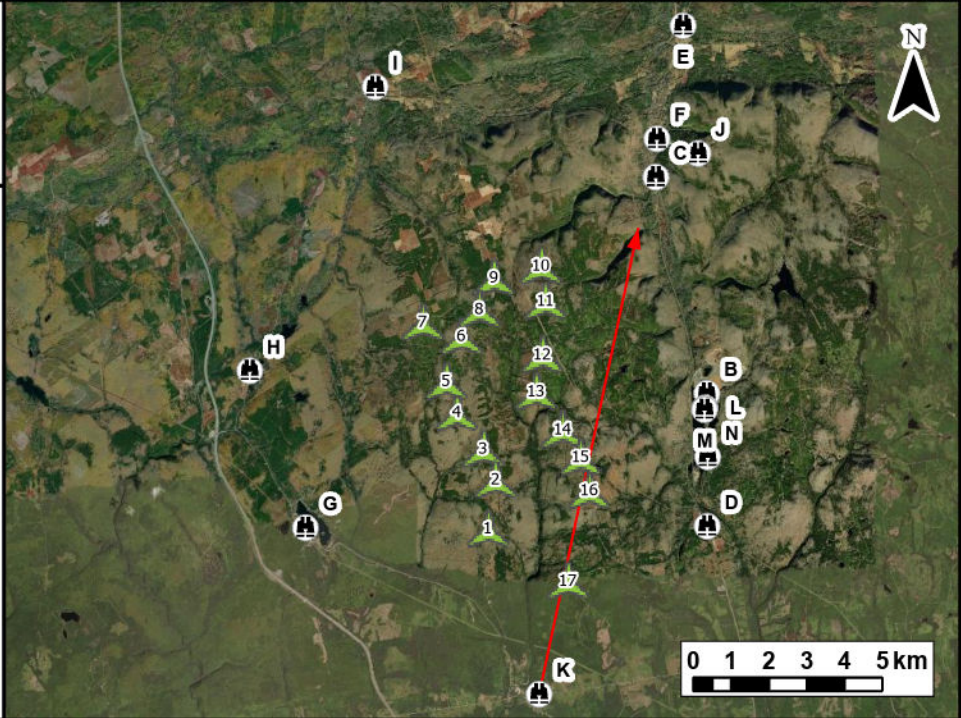
Date:	Project #:
March 2023	20-7376
Scale:	Drawing #:
1:200,000	10.2J
Drawn By:	
M. Savelle	
Checked By:	
M. Smith	



Notes:
 1. Data Sources: GeoNova, Client
 2. Basemaps: Esri, DigitalGlobe, GeoEye, Earthstar Geographics, CNES/Airbus DS, USDA, USGS, AeroGRID, IGN, and the GIS User Community
 3. Projection: NAD83 UTM Zone 20

Legend

- Camera Locations
- Camera Bearing
- Proposed Turbine Location
- Turbines Visible
- Turbines Hidden by Topography
- Turbines Hidden by Foliage



TECHNICAL INFORMATION	
Visual Simulation Location:	Londonderry - Base Line Rd.
View Coordinates:	Latitude: 45° 28' 36.915" N Longitude: 63° 36' 1.875" W Easting: 453064.09 m Northing: 5036107.86 m
Distance to Nearest Turbine:	3.1 km
Direction of View:	Northeast, Heading 12°
Camera Make/ Model:	Canon EOS REBEL T7
Lens:	50 mm
Image Resolution:	6000x4000
Weather Conditions:	Clear Sky
Date of Photo:	2022/04/03
Time of Photo:	11:58
Photo Credit:	Scott Dickey, Strum Consulting

Higgins Mountain Wind Farm - Visual Simulation Londonderry

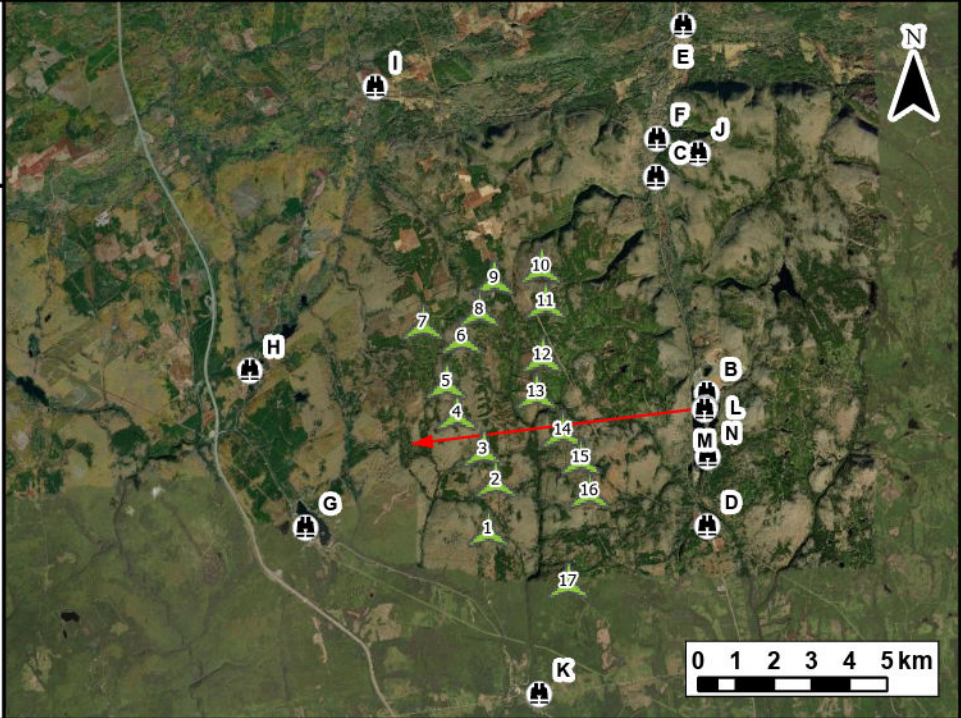
Date:	Project #:
March 2023	20-7376
Scale:	Drawing #:
1:200,000	10.2K
Drawn By:	
M. Savelle	
Checked By:	
M. Smith	



Notes:
 1. Data Sources: GeoNova, Client
 2. Basemaps: Esri, DigitalGlobe, GeoEye, Earthstar Geographics, CNES/Airbus DS, USDA, USGS, AeroGRID, IGN, and the GIS User Community
 3. Projection: NAD83 UTM Zone 20

Legend

- Camera Locations
- Camera Bearing
- Proposed Turbine Location
- Turbines Visible
- Turbines Hidden by Topography
- Turbines Hidden by Foliage



TECHNICAL INFORMATION

Visual Simulation Location:	North of Folly Lake
View Coordinates:	Latitude: 45° 32' 43.465" N Longitude: 63° 32' 42.000" W Easting: 457455.14 m Northing: 5043685.55 m
Distance to Nearest Turbine:	3.6 km
Direction of View:	West, Heading 263°
Camera Make/ Model:	Canon EOS REBEL T7
Lens:	80 mm
Image Resolution:	6000x4000
Weather Conditions:	Clear Sky
Date of Photo:	2021/11/27
Time of Photo:	11:01
Photo Credit:	Maryam Baksh, Elemental Energy

**Higgins Mountain
Wind Farm -
Visual Simulation
Folly Lake**



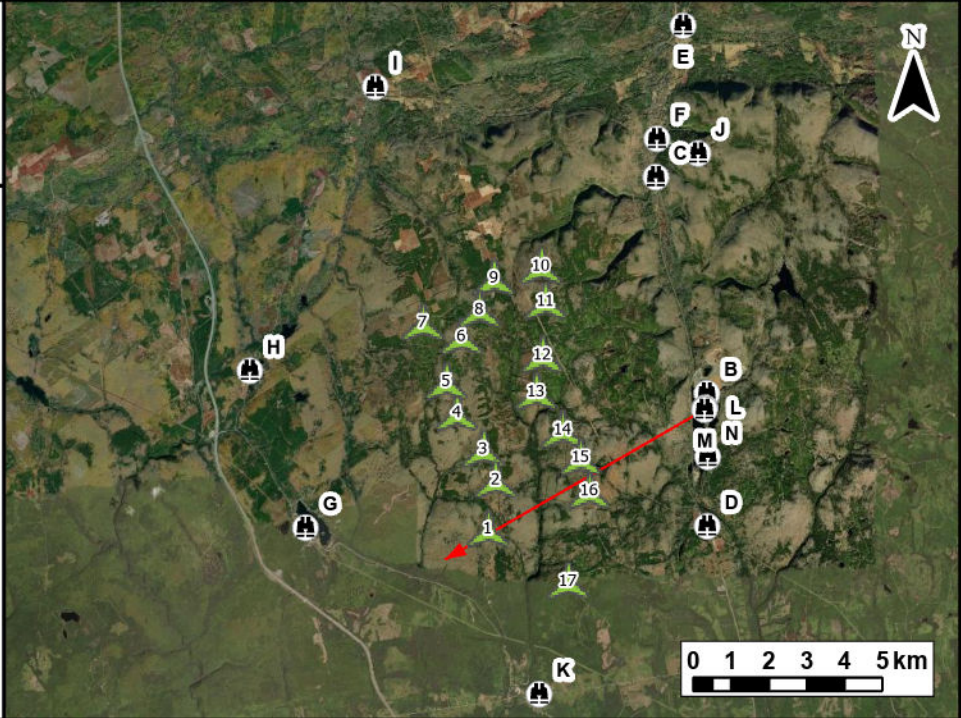
Date:	Project #:
March 2023	20-7376
Scale:	Drawing #:
1:200,000	10.2L
Drawn By:	
M. Savelle	
Checked By:	
M. Smith	



Notes:
 1. Data Sources: GeoNova, Client
 2. Basemaps: Esri, DigitalGlobe, GeoEye, Earthstar Geographics, CNES/Airbus DS, USDA, USGS, AeroGRID, IGN, and the GIS User Community
 3. Projection: NAD83 UTM Zone 20

Legend

- Camera Locations
- Camera Bearing
- Proposed Turbine Location
- Turbines Visible
- Turbines Hidden by Topography
- Turbines Hidden by Foliage



TECHNICAL INFORMATION	
Visual Simulation Location:	Folly Lake - Peninsula Drive
View Coordinates:	Latitude: 45° 32' 42.000" N Longitude: 63° 32' 42.634" W Easting: 457441.10 m Northing: 5043640.42 m
Distance to Nearest Turbine:	3.6 km
Direction of View:	Southwest, Heading 240°
Camera Make/ Model:	Canon EOS REBEL T7
Lens:	80 mm
Image Resolution:	6000 x 4000
Weather Conditions:	Clear Sky
Date of Photo:	2021/11/27
Time of Photo:	12:42
Photo Credit:	Maryam Baksh, Elemental Energy

Higgins Mountain Wind Farm - Visual Simulation Folly Lake

Date:	Project #:
March 2023	20-7376
Scale:	Drawing #:
1:200,000	10.2M
Drawn By:	
M. Savelle	
Checked By:	
M. Smith	