

Higgins Mountain Wind Farm Project

Overview of the Nearest IBA Polygon



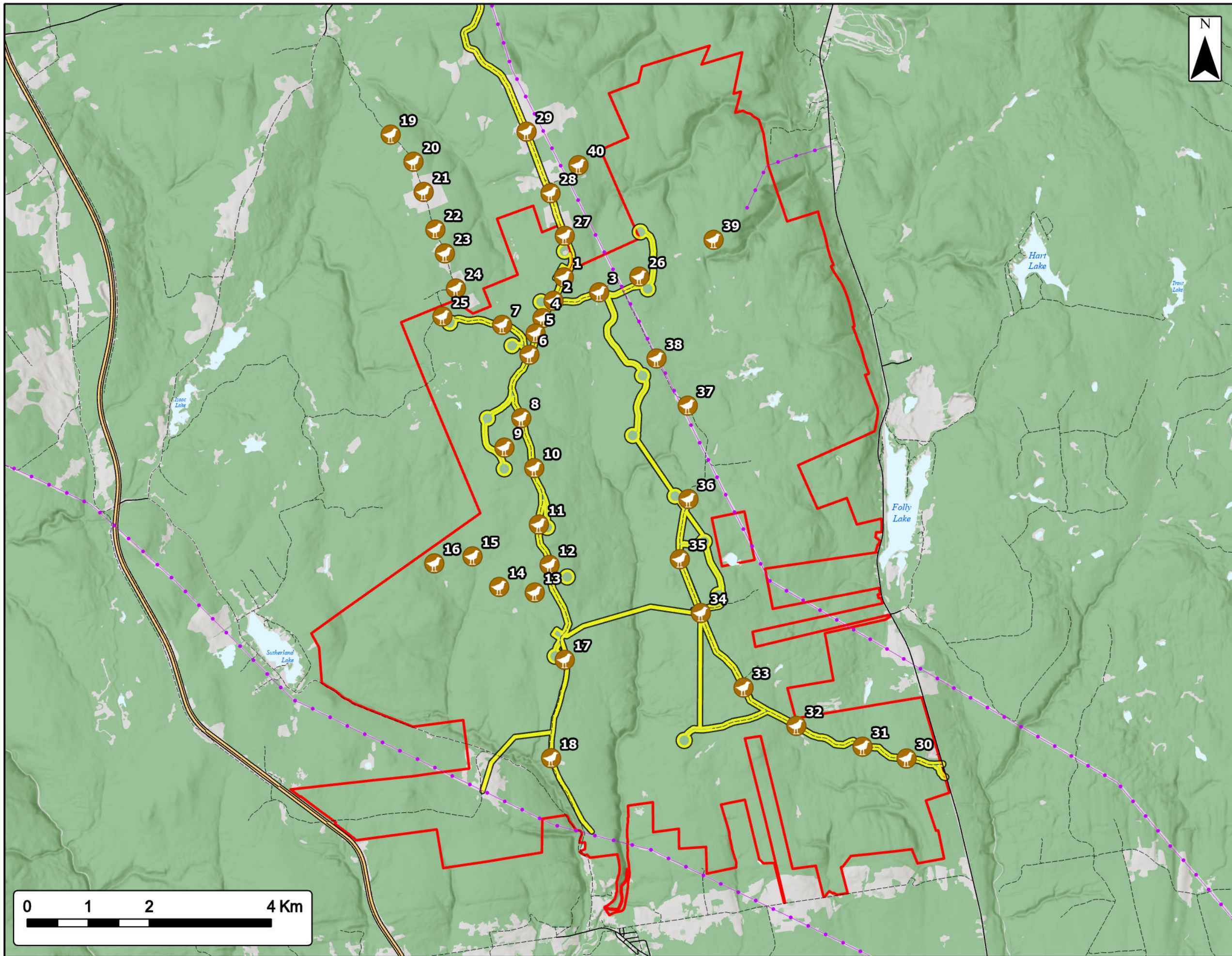
Study Area	
Assessment Area	
IBA - NS019	
Transportation	
Trans-Canada Highway	
Highway	
Road	
Unpaved Road	
Water Features	
Mapped Stream	
Mapped Indefinite Stream	
Mapped Lakes and Rivers	
Mapped Wet Area	



Coordinate System: NAD83 UTM Zone 20N
Sources: ESRI Basemaps, GeoNOVA, NSTD, HERE, Garmin, USGS, NRCan

Date:	Mar 2023	Project #:	20-7376
Scale:	1:200,000	Drawing #:	7.22
Drawn By:	P. Opra		
Checked By:	M. Savelle		





**Higgins Mountain
Wind Farm Project**
Point Count Locations - 2020 Breeding



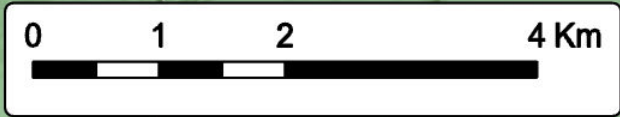
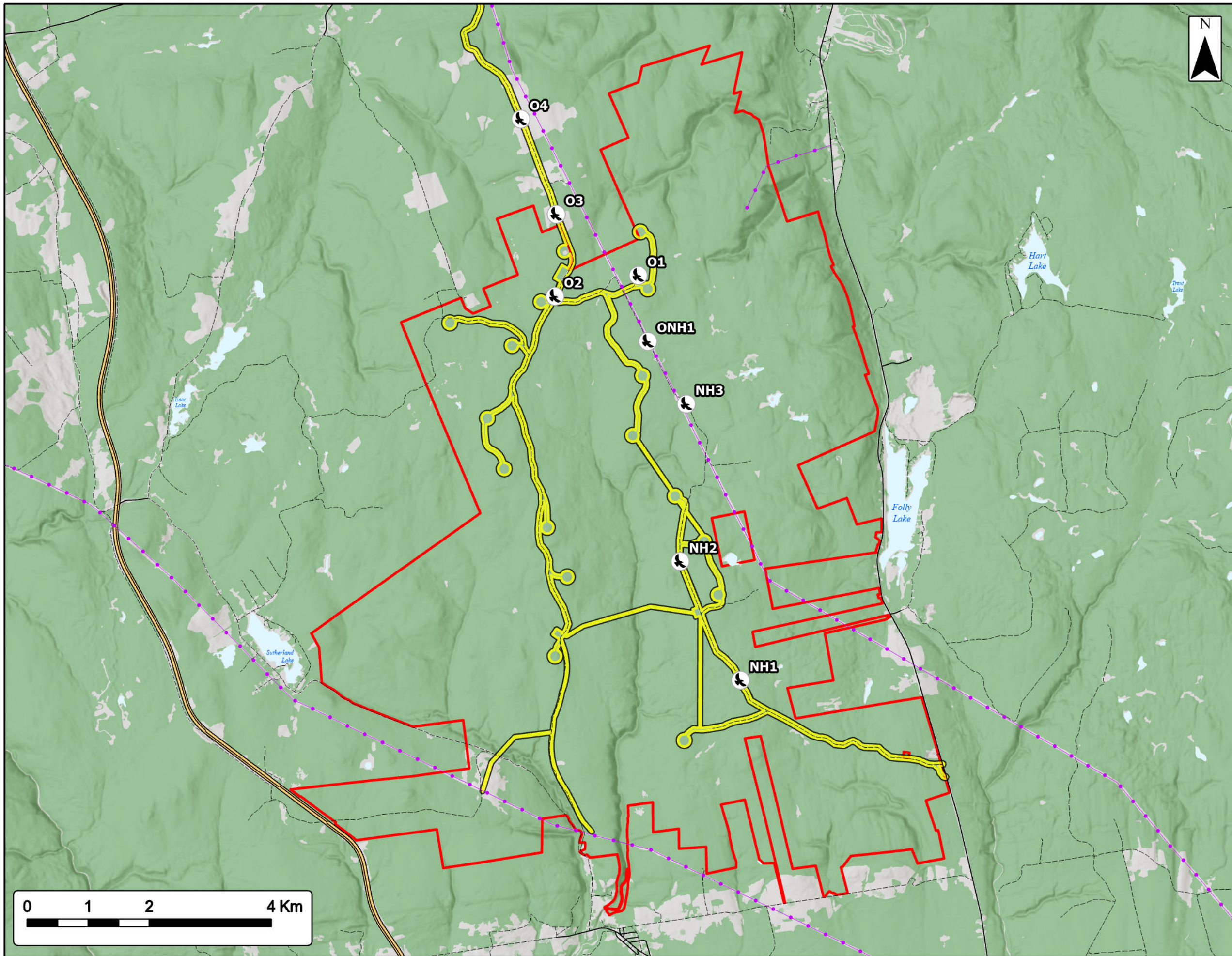
Study Area	
Assessment Area	
Point Count	
Transportation	
Trans-Canada Highway	
Road	
Unpaved Road	
Utilities (line)	
Existing Transmission Lines	
Water Features	
Mapped Lakes and Rivers	



Coordinate System: NAD83 UTM Zone 20N Sources: ESRI Basemaps, GeoNOVA, NSTD, HERE, Garmin, USGS, NRCan

Date:	Mar 2023	Project #:	20-7376
Scale:	1:60,000	Drawing #:	7.23
Drawn By:	P. Opra		
Checked By:	S. Dickey		





**Higgins Mountain
Wind Farm Project**
Nocturnal Surveys - 2020



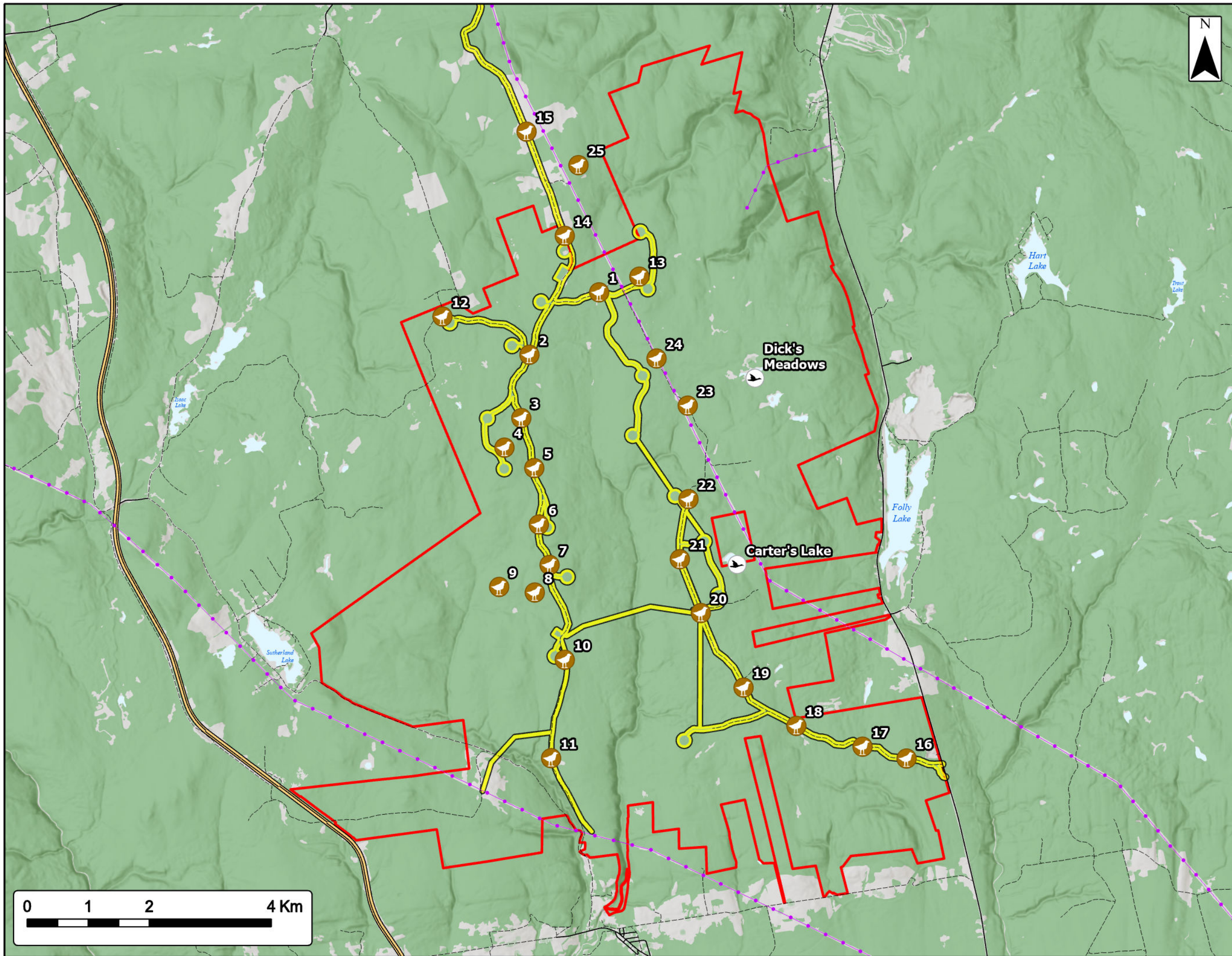
Study Area	
Assessment Area	
Owling and CONI	
Transportation	
Trans-Canada Highway	
Road	
Unpaved Road	
Utilities (line)	
Existing Transmission Lines	
Water Features	
Mapped Lakes and Rivers	



Coordinate System: NAD83 UTM Zone 20N Sources: ESRI Basemaps, GeoNOVA, NSTD, HERE, Garmin, USGS, NRCan

Date:	Mar 2023	Project #:	20-7376
Scale:	1:60,000	Drawing #:	7.24
Drawn By:	P. Opra		
Checked By:	S. Dickey		





**Higgins Mountain
Wind Farm Project**
Point Count Locations - 2020 Fall Migration



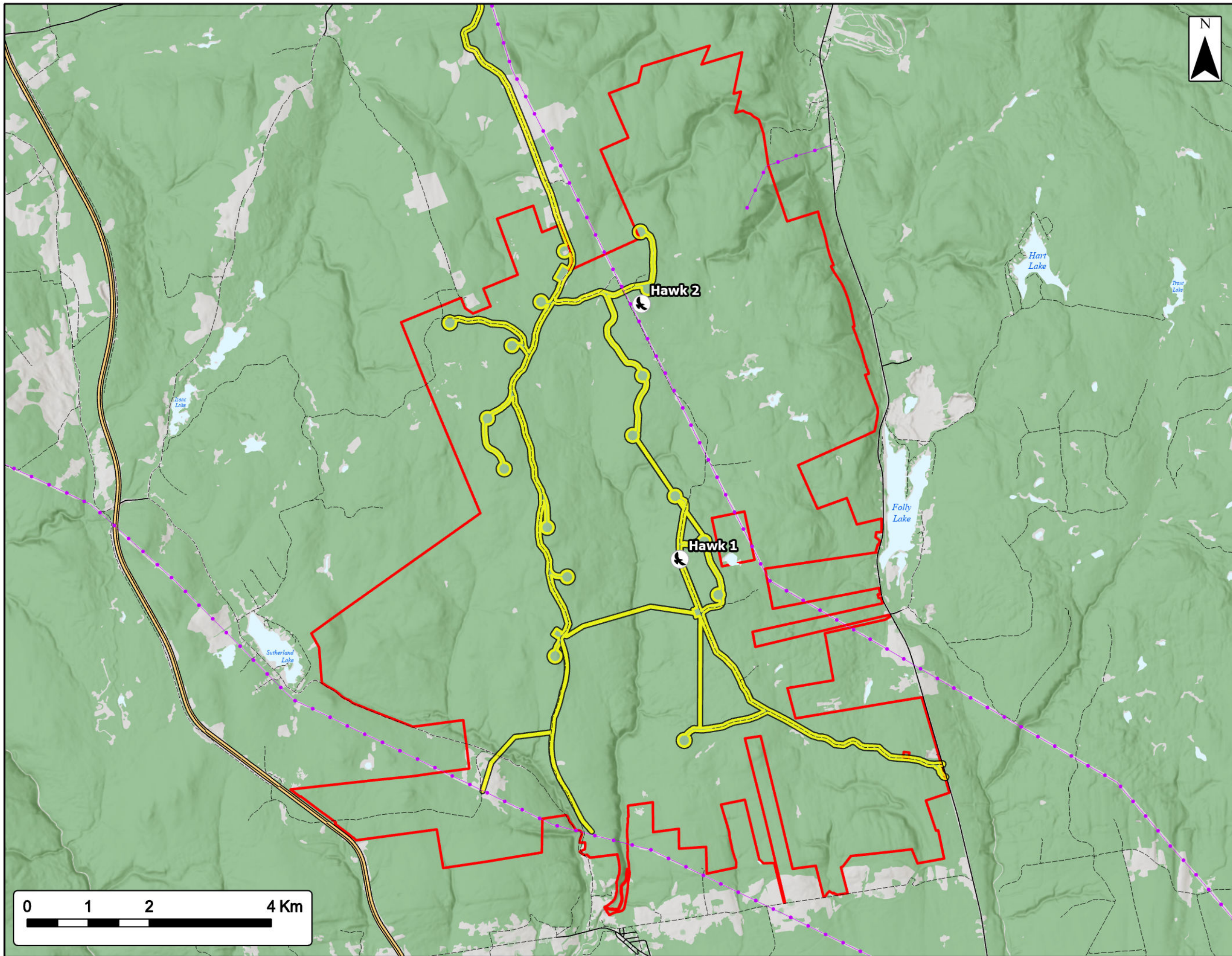
Study Area	
Assessment Area	
Point Count	
Search Area (Waterfowl)	
Transportation	
Trans-Canada Highway	
Road	
Unpaved Road	
Utilities (line)	
Existing Transmission Lines	
Water Features	
Mapped Lakes and Rivers	



Coordinate System: NAD83 UTM Zone 20N
Sources: ESRI Basemaps, GeoNOVA, NSTD, HERE, Garmin, USGS, NRCan

Date:	Mar 2023	Project #:	20-7376
Scale:	1:60,000	Drawing #:	7.25
Drawn By:	P. Opra		
Checked By:	S. Dickey		





**Higgins Mountain
Wind Farm Project**
Diurnal Watch - 2020 Fall Migration



Study Area	
Assessment Area	
Diurnal Hawk Watch	
Transportation	
Trans-Canada Highway	
Road	
Unpaved Road	
Utilities (line)	
Existing Transmission Lines	
Water Features	
Mapped Lakes and Rivers	



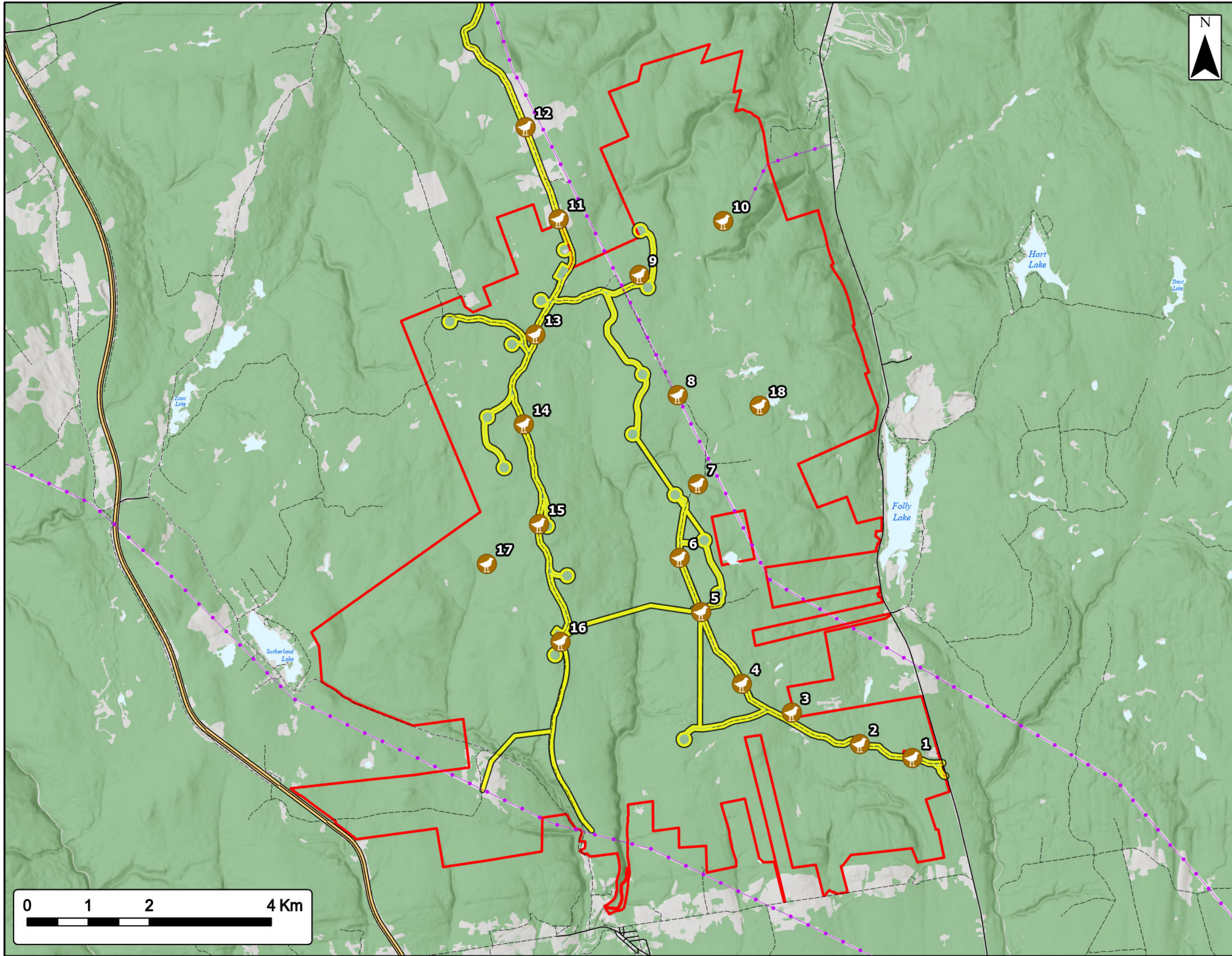
Coordinate System: NAD83 UTM Zone 20N Sources: ESRI Basemaps, GeoNOVA, NSTD, HERE, Garmin, USGS, NRCan

Date:	Mar 2023	Project #:	20-7376
Scale:	1:60,000	Drawing #:	7.26
Drawn By:	P. Opra		
Checked By:	S. Dickey		



Engineering - Surveying - Environmental
Bedford - Antigonish - Moncton - St. John's





**Higgins Mountain
Wind Farm Project**
Point Count Locations - December 2020



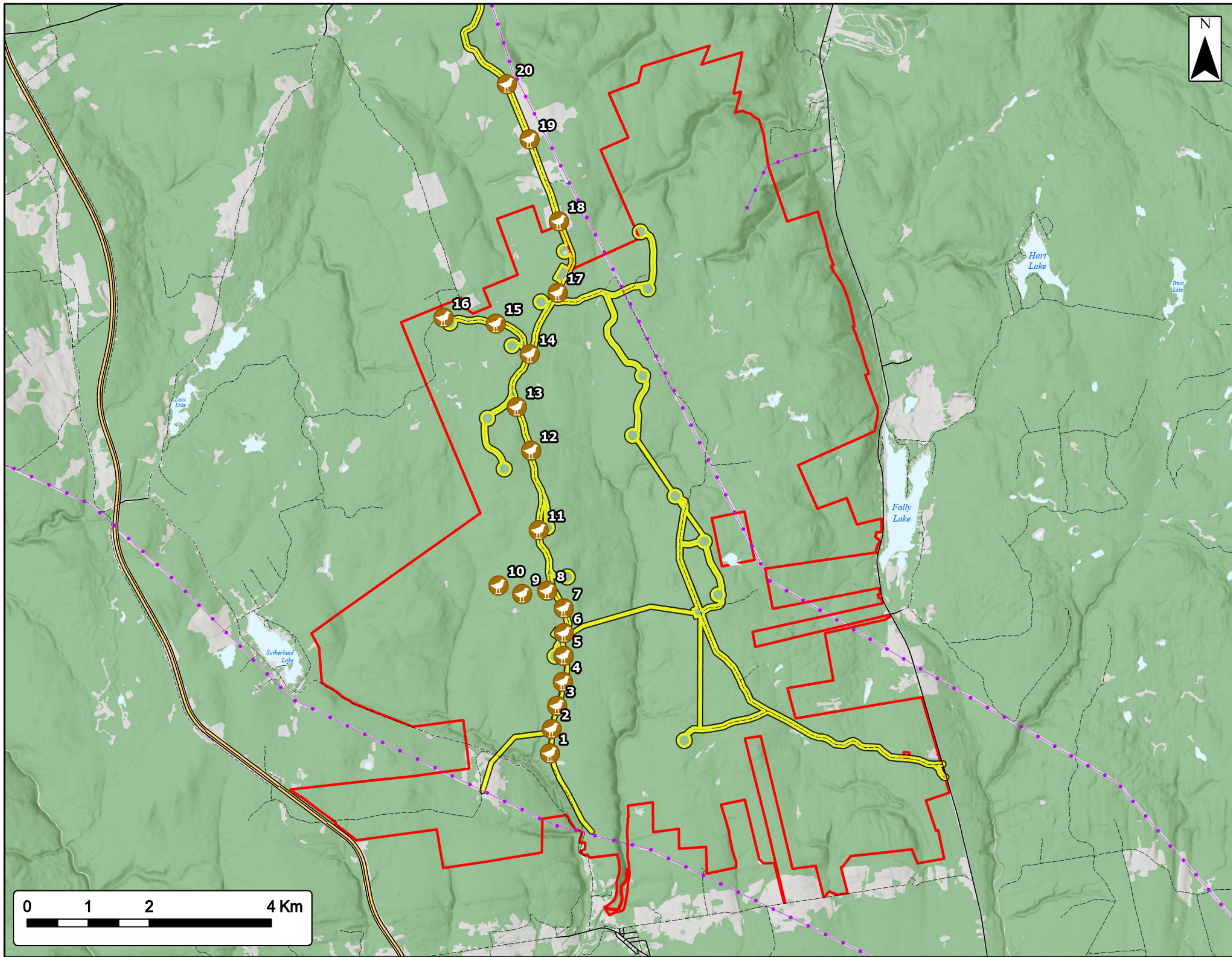
Study Area	
Assessment Area	
Point Count	
Transportation	
Trans-Canada Highway	
Road	
Unpaved Road	
Utilities (line)	
Existing Transmission Lines	
Water Features	
Mapped Lakes and Rivers	



Coordinate System: NAD83 UTM Zone 20N Sources: ESRI Basemaps, GeoNOVA, NSTD, HERE, Garmin, USGS, NRCan

Date:	Mar 2023	Project #:	20-7376
Scale:	1:60,000	Drawing #:	7.27A
Drawn By:	P. Opra		
Checked By:	S. Dickey		





Higgins Mountain Wind Farm Project

Point Count Locations - January 2021



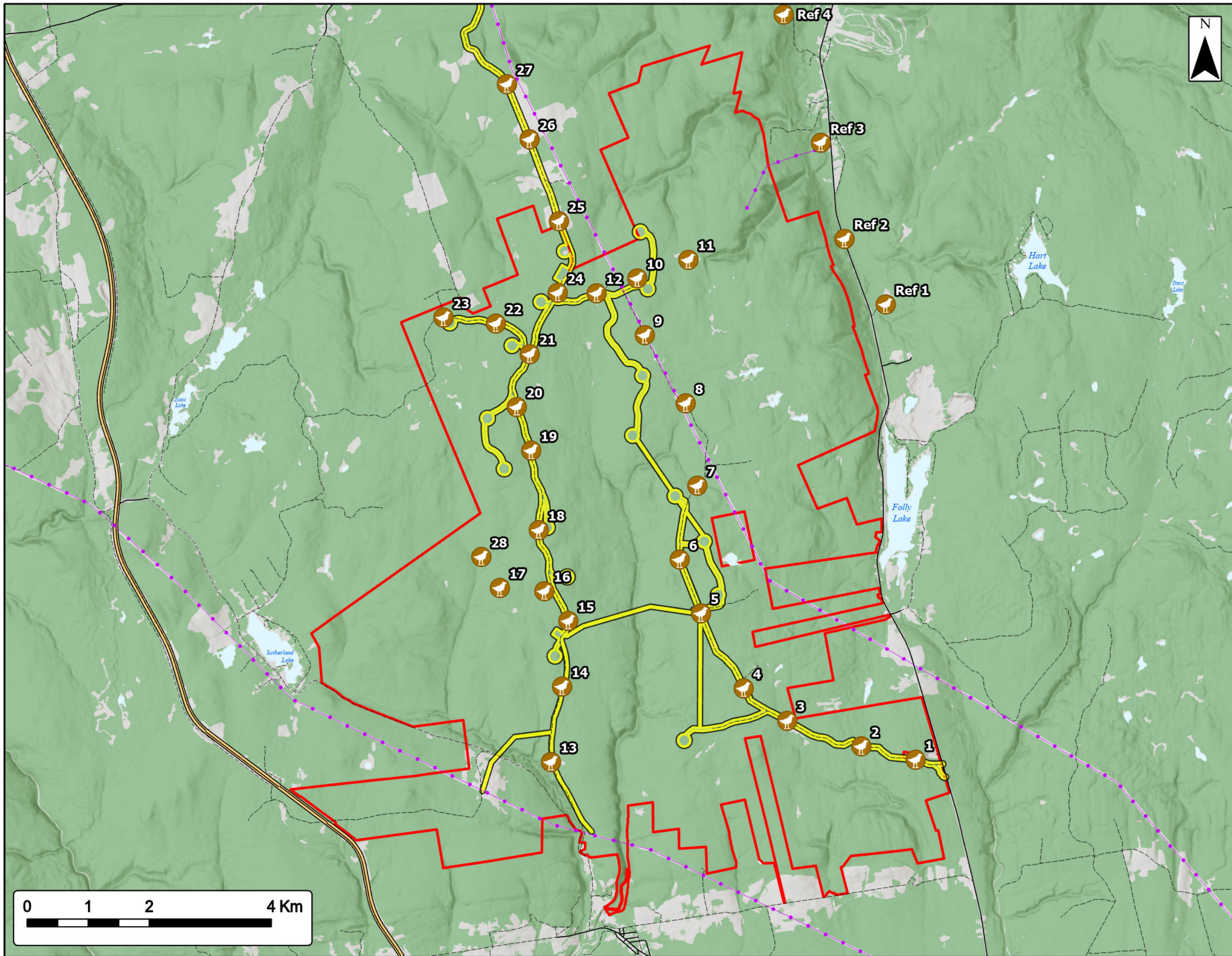
Study Area	
Assessment Area	
Point Count	
Transportation	
Trans-Canada Highway	
Road	
Unpaved Road	
Utilities (line)	
Existing Transmission Lines	
Water Features	
Mapped Lakes and Rivers	



Coordinate System: NAD83 UTM Zone 20N Sources: ESRI Basemaps, GeoNOVA, NSTD, HERE, Garmin, USGS, NRCan

Date:	Mar 2023	Project #:	20-7376
Scale:	1:60,000	Drawing #:	7.27B
Drawn By:	P. Opra		
Checked By:	S. Dickey		





Higgins Mountain Wind Farm Project

Point Count Locations - March 2021

Study Area

Assessment Area

Point Count

Transportation

Trans-Canada Highway

Road

Unpaved Road

Utilities (line)

Existing Transmission Lines

Water Features

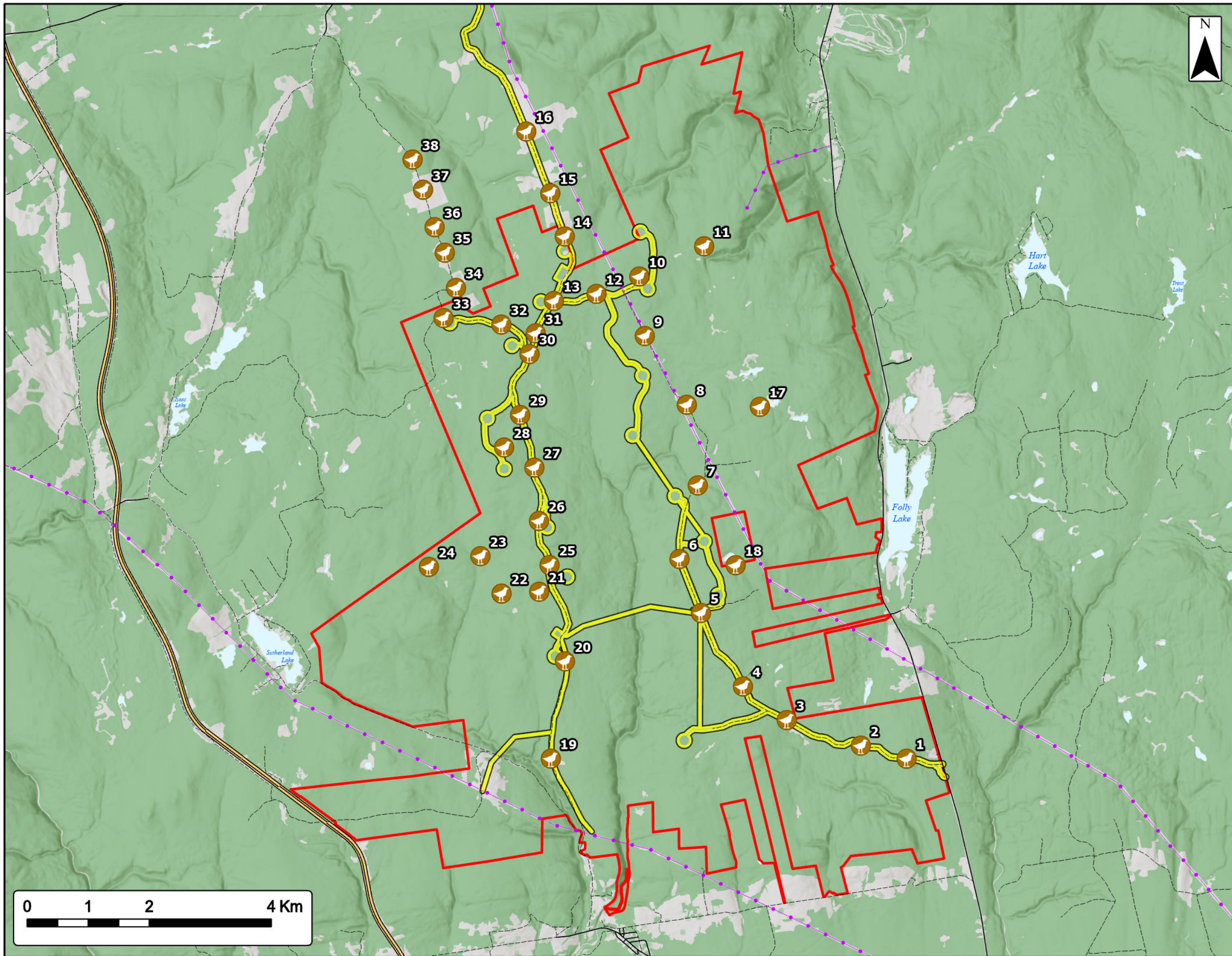
Mapped Lakes and Rivers

Coordinate System: NAD83 UTM Zone 20N

Sources: ESRI Basemaps, GeoNOVA, NSTD, HERE, Garmin, USGS, NRCan

Date: Mar 2023	Project #: 20-7376
Scale: 1:60,000	Drawing #: 7.27C
Drawn By: P. Opra	7.27C
Checked By: S. Dickey	

Engineering - Surveying - Environmental
Bedford - Antigonish - Moncton - St. John's



**Higgins Mountain
Wind Farm Project**
Point Count Locations - Spring Migration 2021



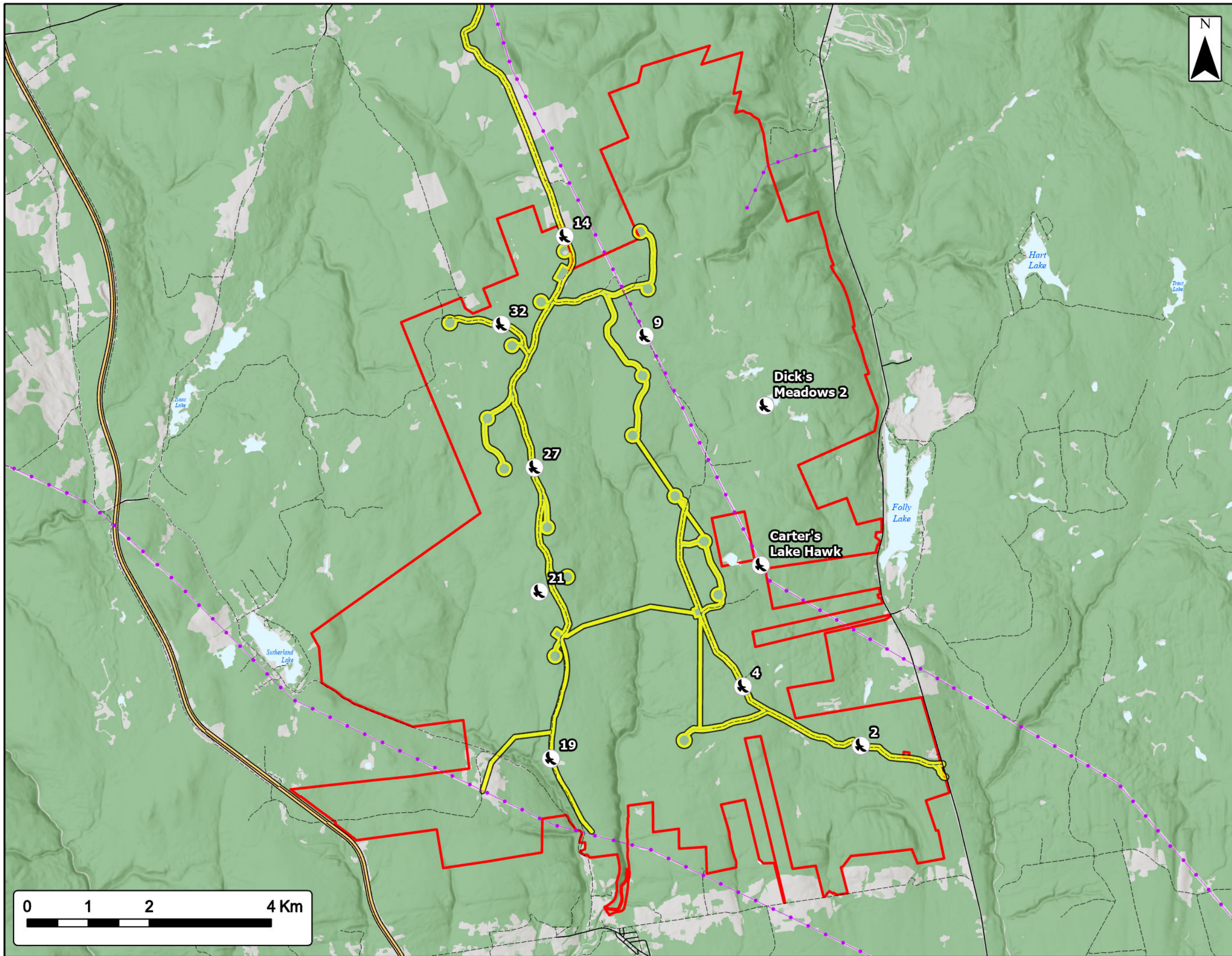
Study Area	
Assessment Area	
Point Count	
Transportation	
Trans-Canada Highway	
Road	
Unpaved Road	
Utilities (line)	
Existing Transmission Lines	
Water Features	
Mapped Lakes and Rivers	



Coordinate System: NAD83 UTM Zone 20N Sources: ESRI Basemaps, GeoNOVA, NSTD, HERE, Garmin, USGS, NRCan

Date:	Mar 2023	Project #:	20-7376
Scale:	1:60,000	Drawing #:	7.28
Drawn By:	P. Opra		
Checked By:	S. Dickey		





**Higgins Mountain
Wind Farm Project**
Nocturnal - Spring Migration 2021



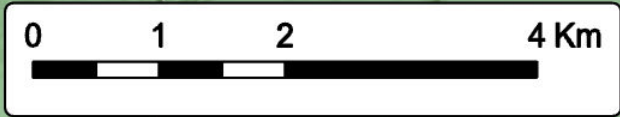
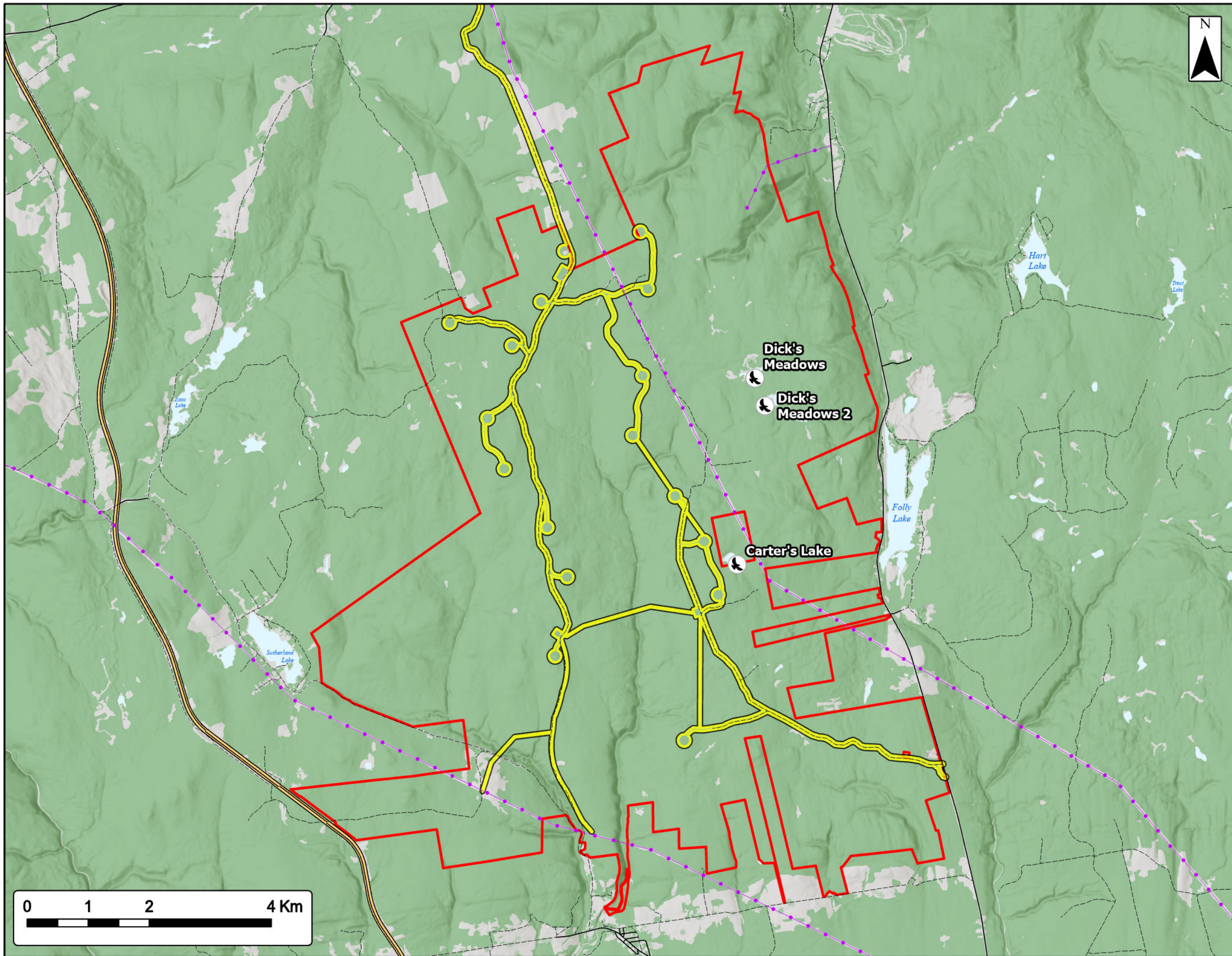
Study Area	
Assessment Area	
Owling	
Transportation	
Trans-Canada Highway	
Road	
Unpaved Road	
Utilities (line)	
Existing Transmission Lines	
Water Features	
Mapped Lakes and Rivers	



Coordinate System: NAD83 UTM Zone 20N
Sources: ESRI Basemaps, GeoNOVA, NSTD, HERE, Garmin, USGS, NRCAN

Date:	Mar 2023	Project #:	20-7376
Scale:	1:60,000	Drawing #:	7.29A
Drawn By:	P. Opra		
Checked By:	S. Dickey		





Higgins Mountain Wind Farm Project

Search Area - Spring Migration 2021

Study Area

Assessment Area

Search Area (Waterfowl)

Transportation

Trans-Canada Highway

Road

Unpaved Road

Utilities (line)

Existing Transmission Lines

Water Features

Mapped Lakes and Rivers

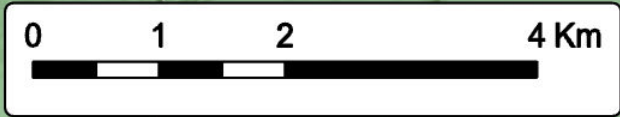
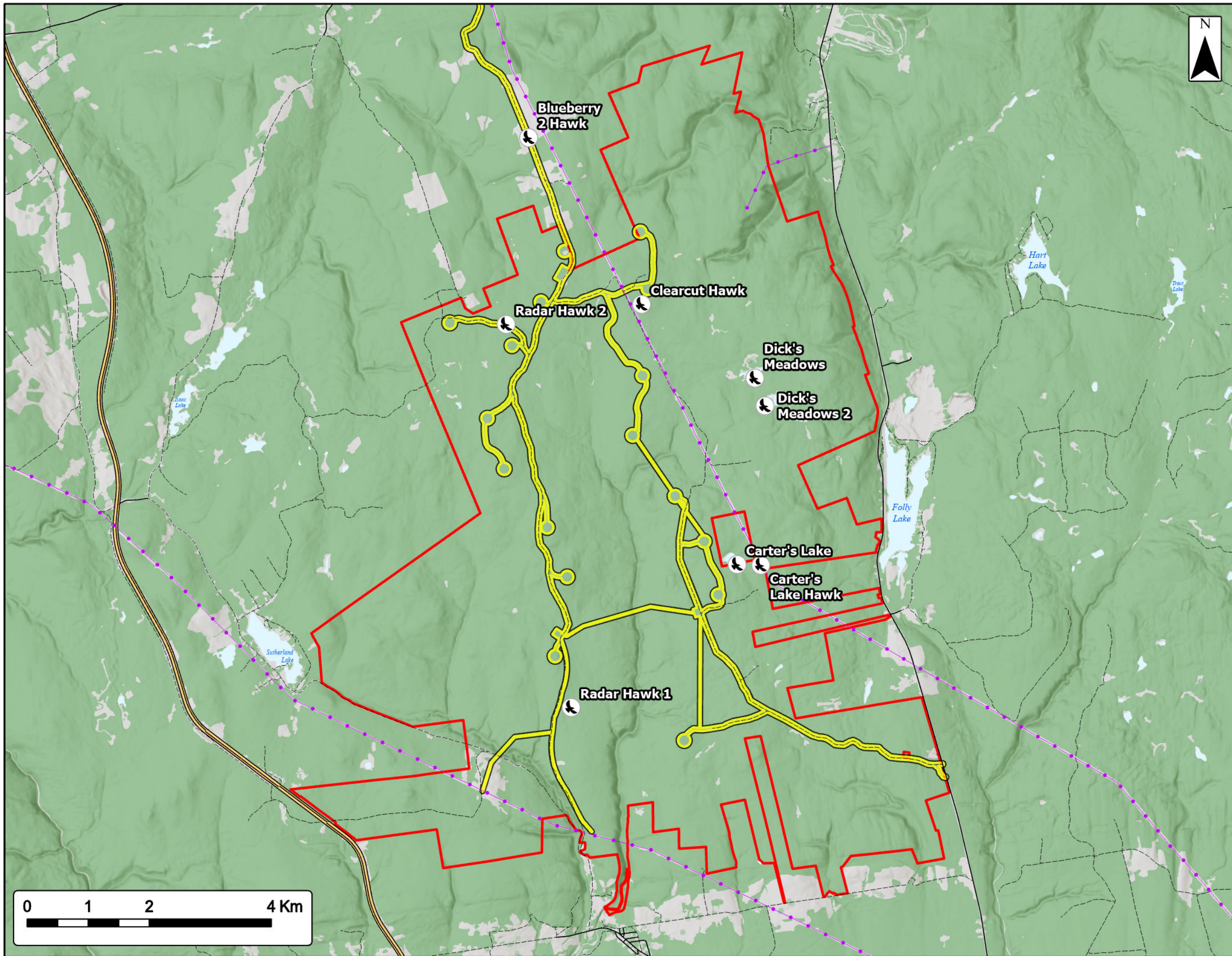
Coordinate System: NAD83 UTM Zone 20N

Sources: ESRI Basemaps, GeoNOVA, NSTD, HERE, Garmin, USGS, NRCan

Date: Mar 2023	Project #: 20-7376
Scale: 1:60,000	Drawing #: 7.29B
Drawn By: P. Opra	7.29B
Checked By: S. Dickey	

Engineering - Surveying - Environmental
Bedford - Antigonish - Moncton - St. John's





Higgins Mountain Wind Farm Project

Diurnal Watch - Spring Migration 2021

Study Area

Assessment Area

Diurnal Watch

Transportation

Trans-Canada Highway

Road

Unpaved Road

Utilities (line)

Existing Transmission Lines

Water Features

Mapped Lakes and Rivers

Coordinate System: NAD83 UTM Zone 20N

Sources: ESRI Basemaps, GeoNOVA, NSTD, HERE, Garmin, USGS, NRCan

Date: Mar 2023	Project #: 20-7376
Scale: 1:60,000	Drawing #: 7.29C
Drawn By: P. Opra	7.29C
Checked By: S. Dickey	

Engineering - Surveying - Environmental
Bedford - Antigonish - Moncton - St. John's