

Higgins Mountain Wind Farm Project

Protected Areas



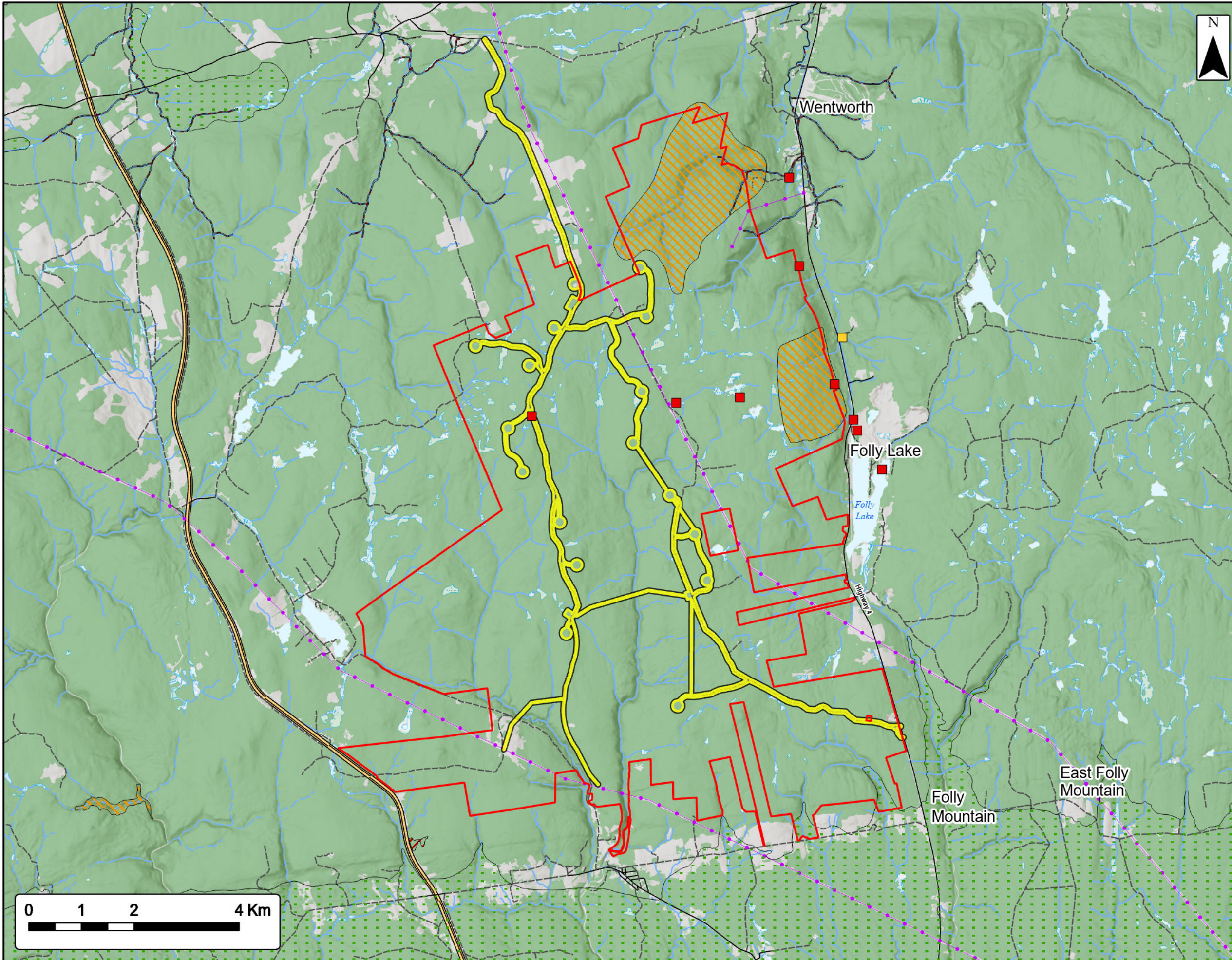
Study Area	
Assessment Area	
Proposed or Pending Protection	
Wilderness Area	
Parks and Protected Areas	
Wilderness Area	
Utilities (line)	
Existing Transmission Lines	
Transportation	
Trans-Canada Highway	
Road	
Unpaved Road	
Railroad	
Water Features	
Mapped Stream	
Mapped Indefinite Stream	
Mapped Wet Area	
Mapped Lakes and Rivers	



Coordinate System: NAD83 UTM Zone 20N Sources: ESRI Basemaps, GeoNOVA, NSTD, HERE, Garmin, USGS, NRCAN

Date:	March 2023	Project #:	20-7376
Scale:	1:60,000	Drawing #:	7.17
Drawn By:	M. Savelle		
Checked By:	M. Smith		





**Higgins Mountain
Wind Farm Project**
Vertebrate and Invertebrate Fauna - ACCDC Records



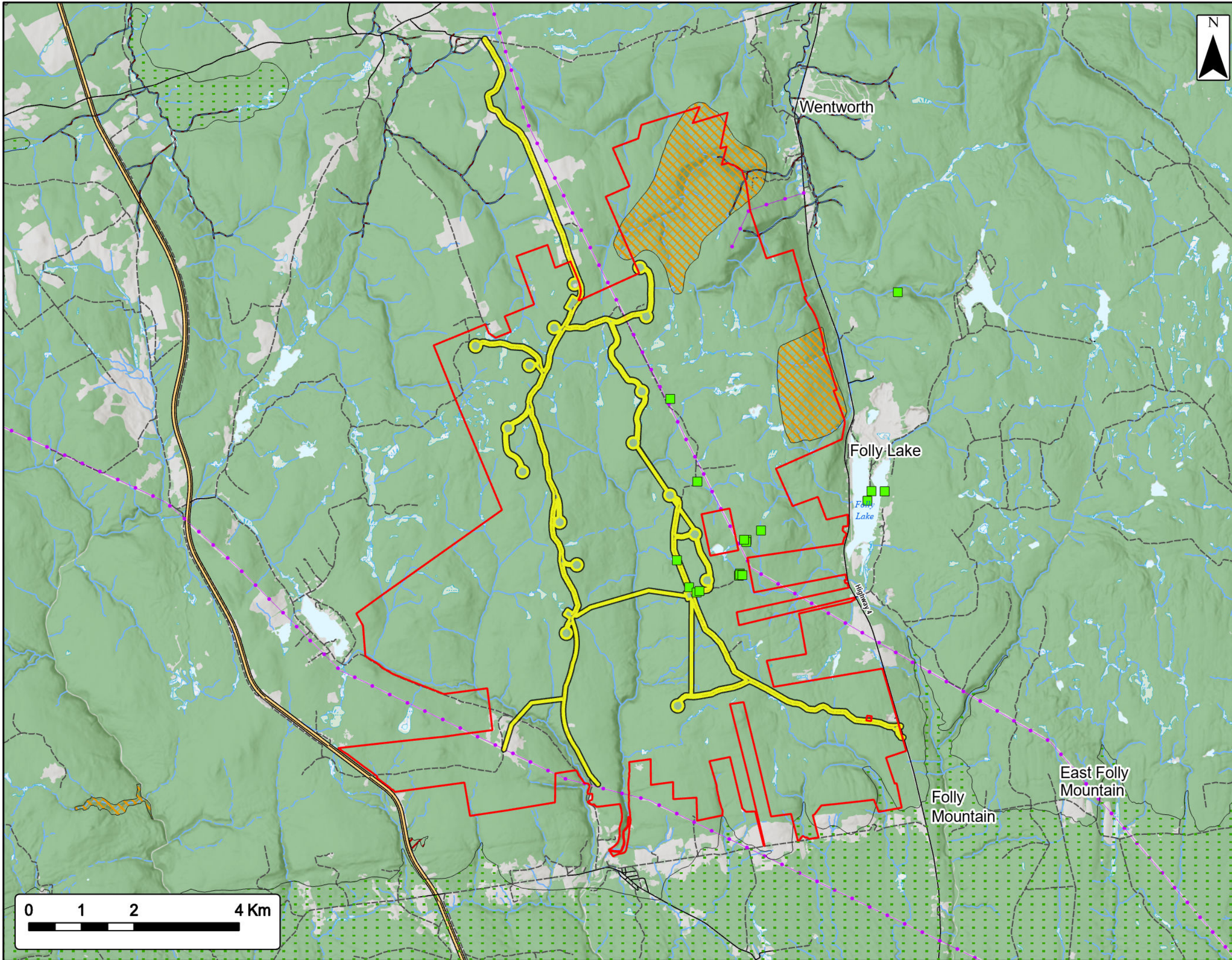
Study Area	
Assessment Area	
ACCDC Pt. Data	
Vertebrate Fauna	
Invertebrate Fauna	
Significant Species & Habitats (NSNRR)	
Deer Wintering	
Other Habitat	
Species at Risk	
Utilities (line)	
Existing Transmission Lines	
Transportation	
Trans-Canada Highway	
Road	
Unpaved Road	
Water Features	
Mapped Stream	
Mapped Indefinite Stream	
Mapped Lakes and Rivers	
Mapped Wet Area	



Coordinate System: NAD83 UTM Zone 20N Sources: Esri Basemaps, GeoNOVA, SNSIS, NRCan, NSNRR, ACCDC, IBA Canada

Date:	Mar 2023	Project #:	20-7376
Scale:	1:70,000	Drawing #:	7.18A
Drawn By:	P. Opra		
Checked By:	M. Savelle		





**Higgins Mountain
Wind Farm Project**
Vascular Flora - ACCDC Records



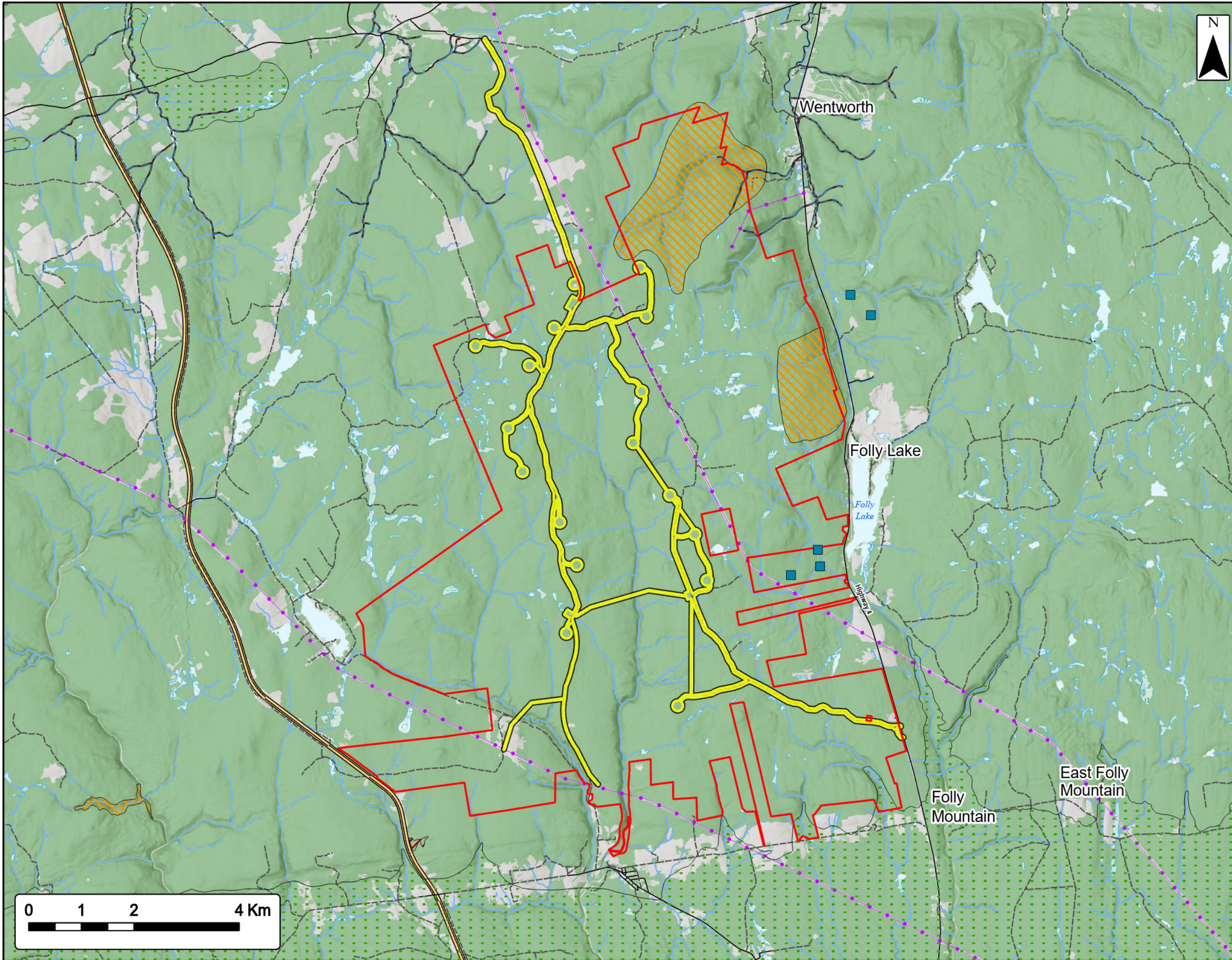
Study Area	
Assessment Area	
ACCDC Pt. Data	
Vascular Flora	
Significant Species & Habitats (NSNRR)	
Deer Wintering	
Other Habitat	
Species at Risk	
Utilities (line)	
Existing Transmission Lines	
Transportation	
Trans-Canada Highway	
Road	
Unpaved Road	
Water Features	
Mapped Stream	
Mapped Indefinite Stream	
Mapped Lakes and Rivers	
Mapped Wet Area	



Coordinate System: NAD83 UTM Zone 20N
Sources: Esri Basemaps, GeoNOVA, SNSIS, NRCan, NSNRR, ACCDC, IBA Canada

Date:	Mar 2023	Project #:	20-7376
Scale:	1:70,000	Drawing #:	7.18B
Drawn By:	P. Opra		
Checked By:	M. Savelle		





**Higgins Mountain
Wind Farm Project**
Nonvascular Flora - ACCDC Records



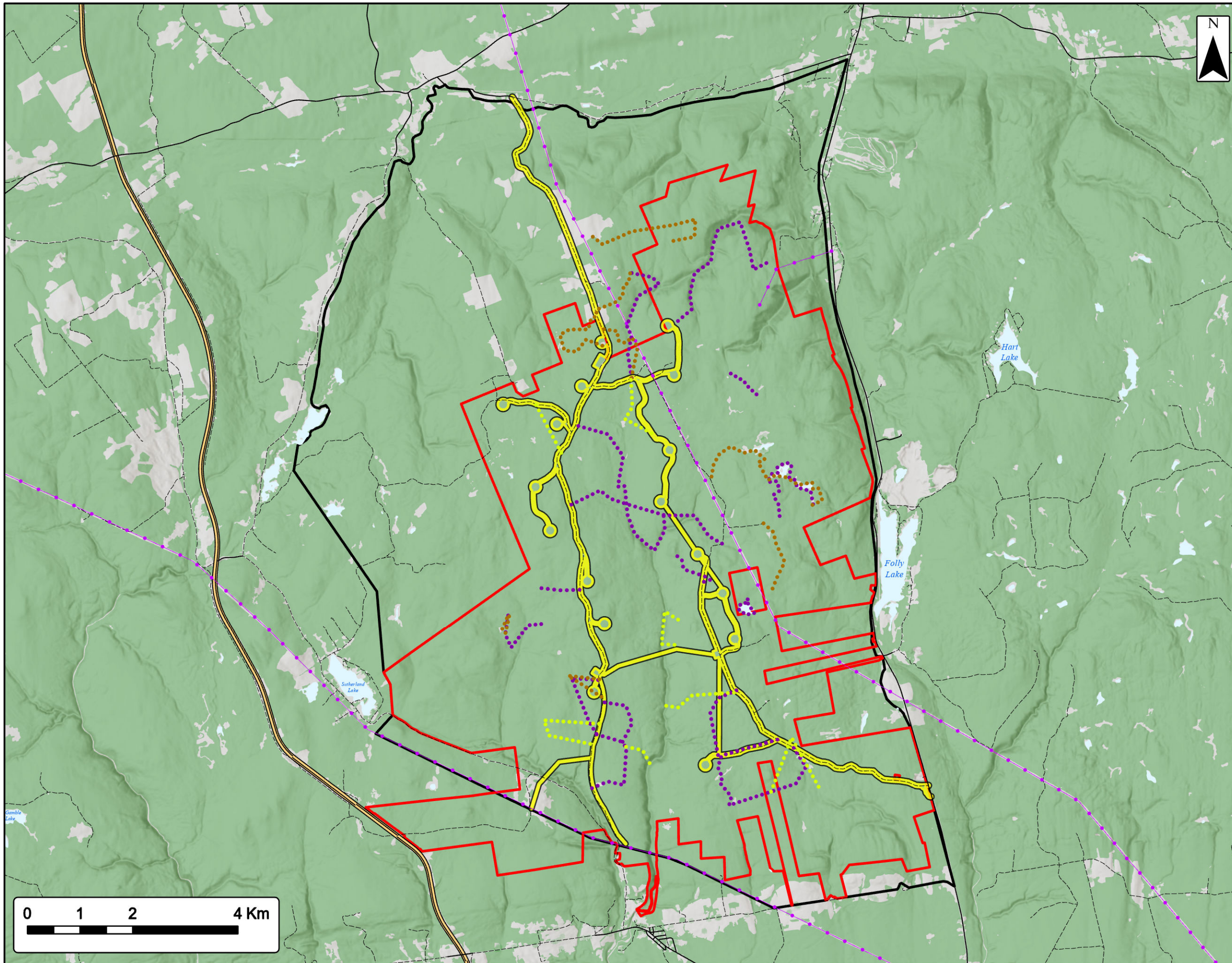
Study Area	
Assessment Area	
ACCDC Pt. Data Nonvascular Flora	
Significant Species & Habitats (NSNRR)	
Deer Wintering	
Other Habitat	
Species at Risk	
Utilities (line)	
Existing Transmission Lines	
Transportation	
Trans-Canada Highway	
Road	
Unpaved Road	
Water Features	
Mapped Stream	
Mapped Indefinite Stream	
Mapped Lakes and Rivers	
Mapped Wet Area	



Coordinate System: NAD83 UTM Zone 20N Sources: Esri Basemaps, GeoNOVA, SNSIS, NRCan, NSNRR, ACCDC, IBA Canada

Date:	Mar 2023	Project #:	20-7376
Scale:	1:70,000	Drawing #:	7.18C
Drawn By:	P. Opra		
Checked By:	M. Savelle		





**Higgins Mountain
Wind Farm Project**
Transects and Fauna RAA

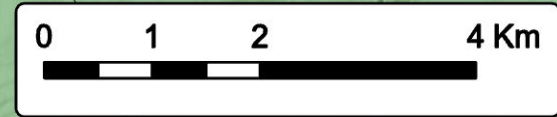


- Study Area
- Assessment Area
- Regional Assessment Area (Fauna)
- PGI Transect
- Winter Tracking Transect
- Vegetation Transect
- Transportation**
- Trans-Canada Highway
- Road
- Unpaved Road
- Utilities (line)**
- Existing Transmission Lines
- Water Features**
- Mapped Lakes and Rivers

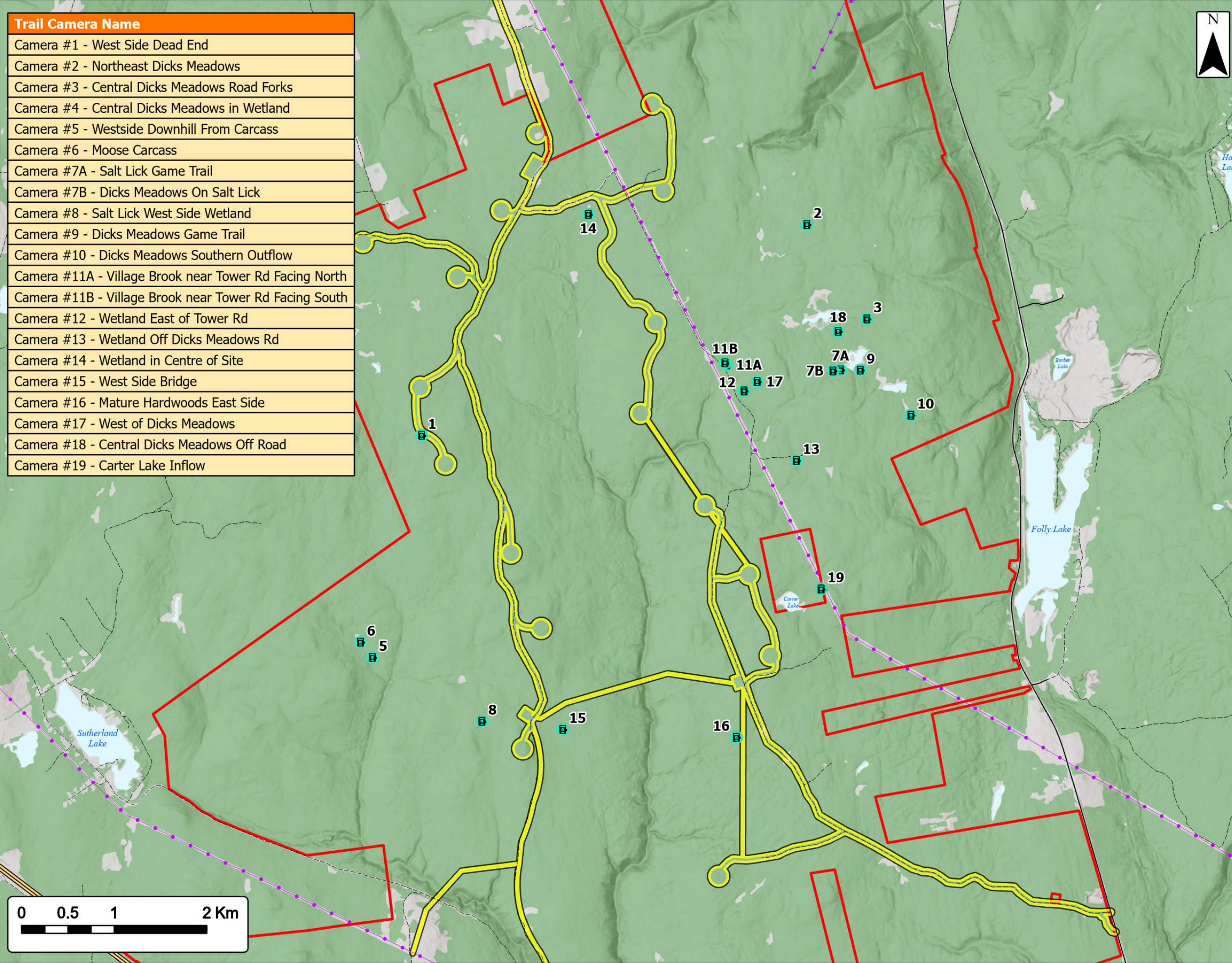


Coordinate System: NAD83 UTM Zone 20N Sources: ESRI Basemaps, GeoNOVA, NSTD, HERE, Garmin, USGS, NRCAN

Date: Mar 2023	Project #: 20-7376
Scale: 1:70,000	Drawing #: 7.19
Drawn By: P. Opra	
Checked By: S. Dickey	



Trail Camera Name
Camera #1 - West Side Dead End
Camera #2 - Northeast Dicks Meadows
Camera #3 - Central Dicks Meadows Road Forks
Camera #4 - Central Dicks Meadows in Wetland
Camera #5 - Westside Downhill From Carcass
Camera #6 - Moose Carcass
Camera #7A - Salt Lick Game Trail
Camera #7B - Dicks Meadows On Salt Lick
Camera #8 - Salt Lick West Side Wetland
Camera #9 - Dicks Meadows Game Trail
Camera #10 - Dicks Meadows Southern Outflow
Camera #11A - Village Brook near Tower Rd Facing North
Camera #11B - Village Brook near Tower Rd Facing South
Camera #12 - Wetland East of Tower Rd
Camera #13 - Wetland Off Dicks Meadows Rd
Camera #14 - Wetland in Centre of Site
Camera #15 - West Side Bridge
Camera #16 - Mature Hardwoods East Side
Camera #17 - West of Dicks Meadows
Camera #18 - Central Dicks Meadows Off Road
Camera #19 - Carter Lake Inflow



Higgins Mountain Wind Farm Project

Trail Camera Locations



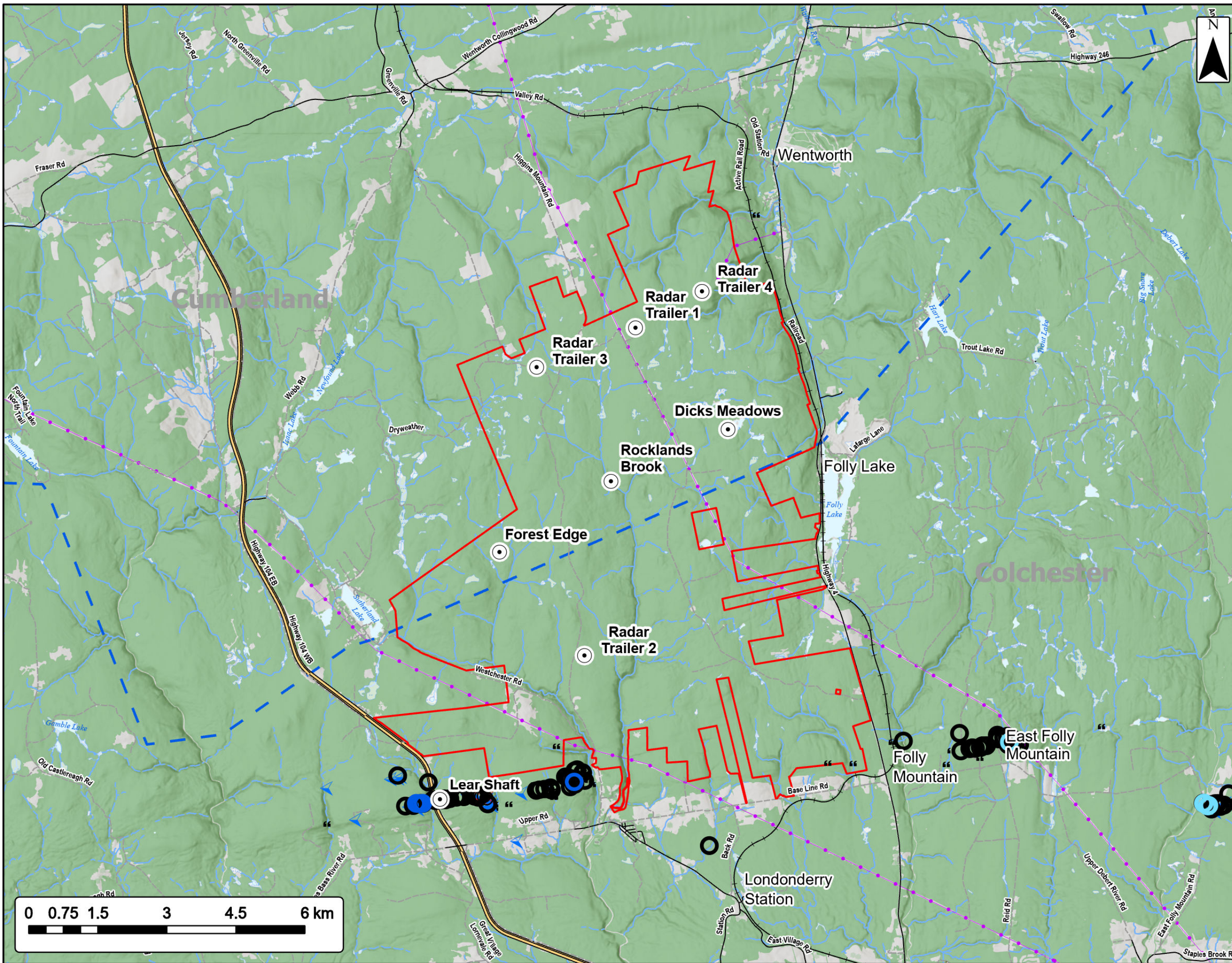
Study Area	
Assessment Area	
Trail Camera	
Transportation	
Trans-Canada Highway	
Road	
Unpaved Road	
Utilities (line)	
Existing Transmission Lines	
Water Features	
Mapped Lakes and Rivers	



Coordinate System: NAD83 UTM Zone 20N Sources: ESRI Basemaps, GeoNOVA, NSTD, HERE, Garmin, USGS, NRCan

Date:	Mar 2023	Project #:	20-7376
Scale:	1:40,000	Drawing #:	7.20
Drawn By:	P. Opra		
Checked By:	M. Savelle		





Higgins Mountain Wind Farm Project

Bat Assessment



Study Area	
Bat Monitor Locations	
Abandoned Mine Openings (AMO)	
Adit	
Open Cut	
Pit	
Shaft	
Slope	
Stope	
Trench	
County Boundary	
Utilities (line)	
Existing Transmission Lines	
Transportation	
Trans-Canada Highway	
Road	
Unpaved Road	
Railroad	
Water Features	
Mapped Stream	
Mapped Indefinite Stream	
Mapped Wet Area	
Mapped Lakes and Rivers	



Coordinate System: NAD83 UTM Zone 20N
Sources: ESRI Basemaps, GeoNOVA, NSTD, HERE, Garmin, USGS, NRCAN

Date:	March 2023	Project #:	20-7376
Scale:	1:80,000	Drawing #:	7.21
Drawn By:	M. Savelle		
Checked By:	M. Smith		

