

**Higgins Mountain
Wind Farm Project**
Watersheds



- Study Area
- Assessment Area
- Primary Watershed Boundary
- Secondary Watershed Boundary
- Transportation**
- Trans-Canada Highway
- Road
- Unpaved Road
- Utilities (line)**
- Existing Transmission Lines
- Water Features**
- Mapped Stream
- Mapped Indefinite Stream
- Mapped Lakes and Rivers

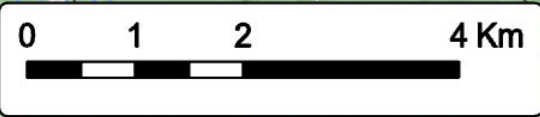


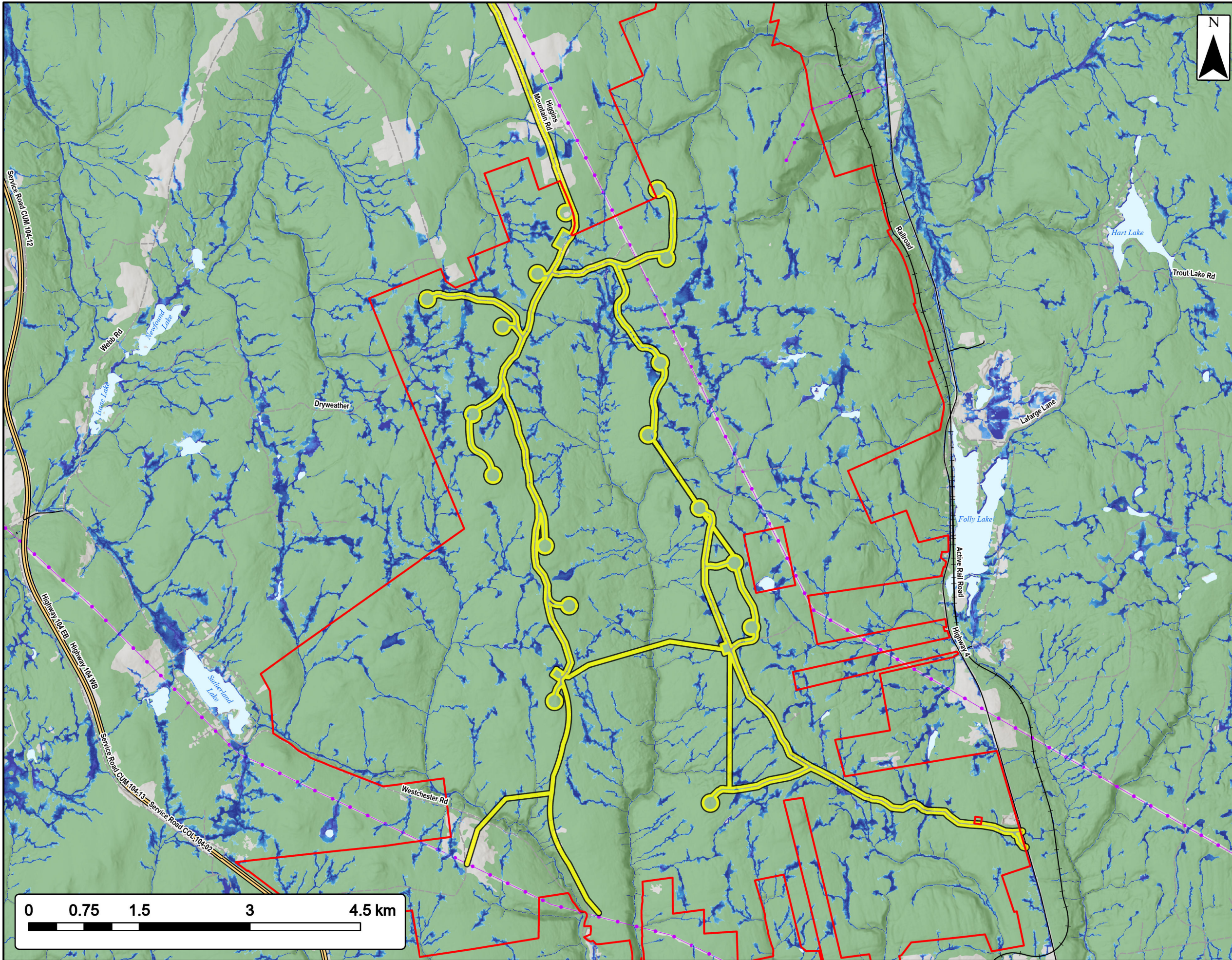
Coordinate System: NAD83 UTM Zone 20N Sources: Esri Basemaps, GeoNOVA, SNSIS, NRCan, NSNRR, ACCDC, IBA Canada

| | | | |
|-------------|------------|------------|-------------|
| Date: | Mar 2023 | Project #: | 20-7376 |
| Scale: | 1:70,000 | Drawing #: | 7.12 |
| Drawn By: | P. Opra | | |
| Checked By: | M. Savelle | | |



Engineering - Surveying - Environmental
Bedford - Antigonish - Moncton - St. John's






Higgins Mountain Wind Farm Project


Wet Area Mapping



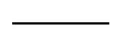
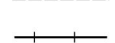
Study Area 

Assessment Area 

Depth to Water (cm)

| | |
|----------|---|
| 0 - 10 |  |
| 10 - 20 |  |
| 20 - 30 |  |
| 30 - 40 |  |
| 40 - 50 |  |
| 50 - 60 |  |
| 60 - 70 |  |
| 70 - 80 |  |
| 80 - 90 |  |
| 90 - 100 |  |

Transportation

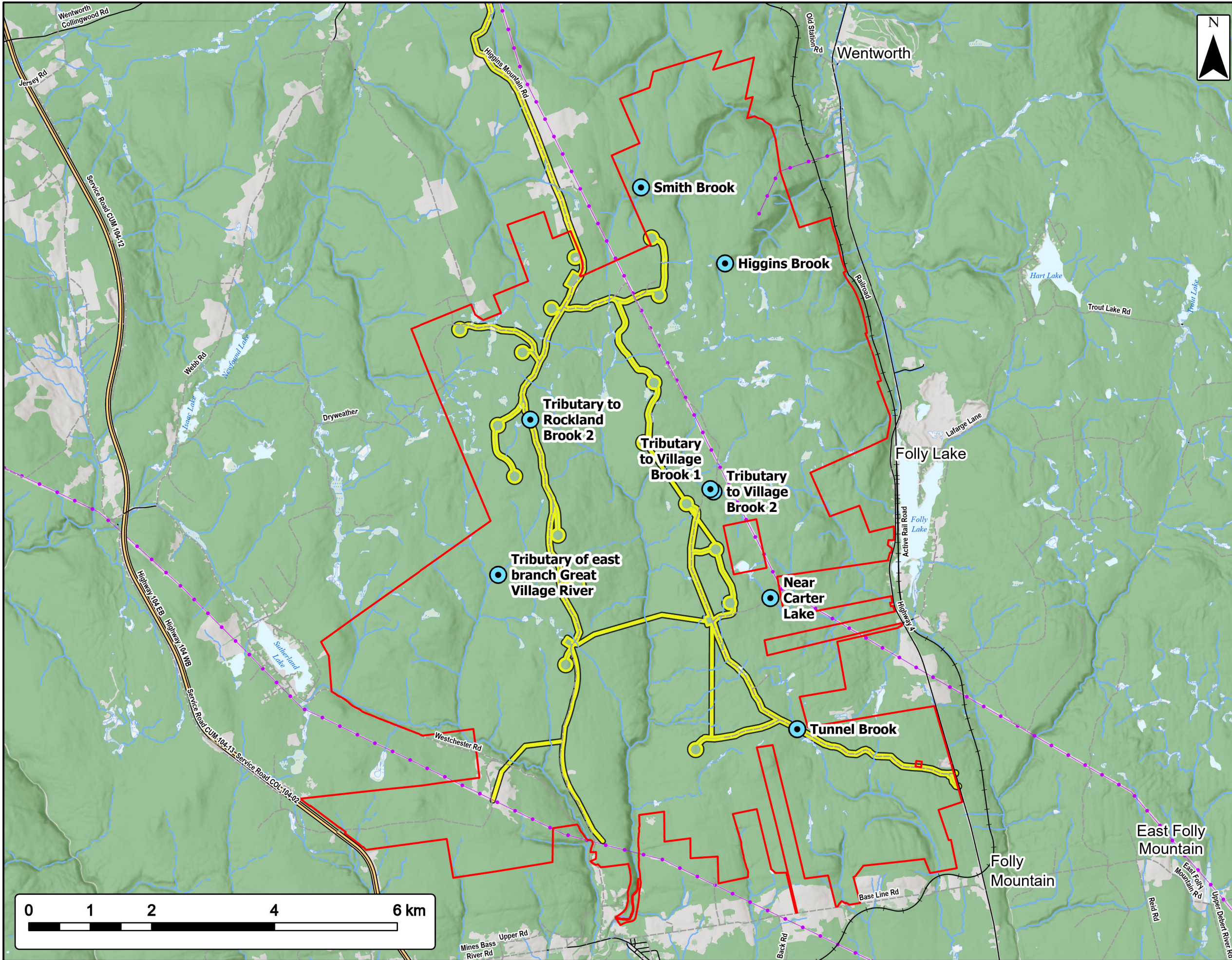
| | |
|----------------------|---|
| Trans-Canada Highway |  |
| Road |  |
| Unpaved Road |  |
| Railroad |  |



Coordinate System: NAD83 UTM Zone 20N Sources: ESRI Basemaps, GeoNOVA, NSTD, HERE, Garmin, USGS, NRCAN

| | | | |
|-------------|------------|------------|-------------|
| Date: | March 2023 | Project #: | 20-7376 |
| Scale: | 1:50,000 | Drawing #: | 7.13 |
| Drawn By: | M. Savelle | | |
| Checked By: | M. Smith | | |





Higgins Mountain Wind Farm Project

Fish Habitat



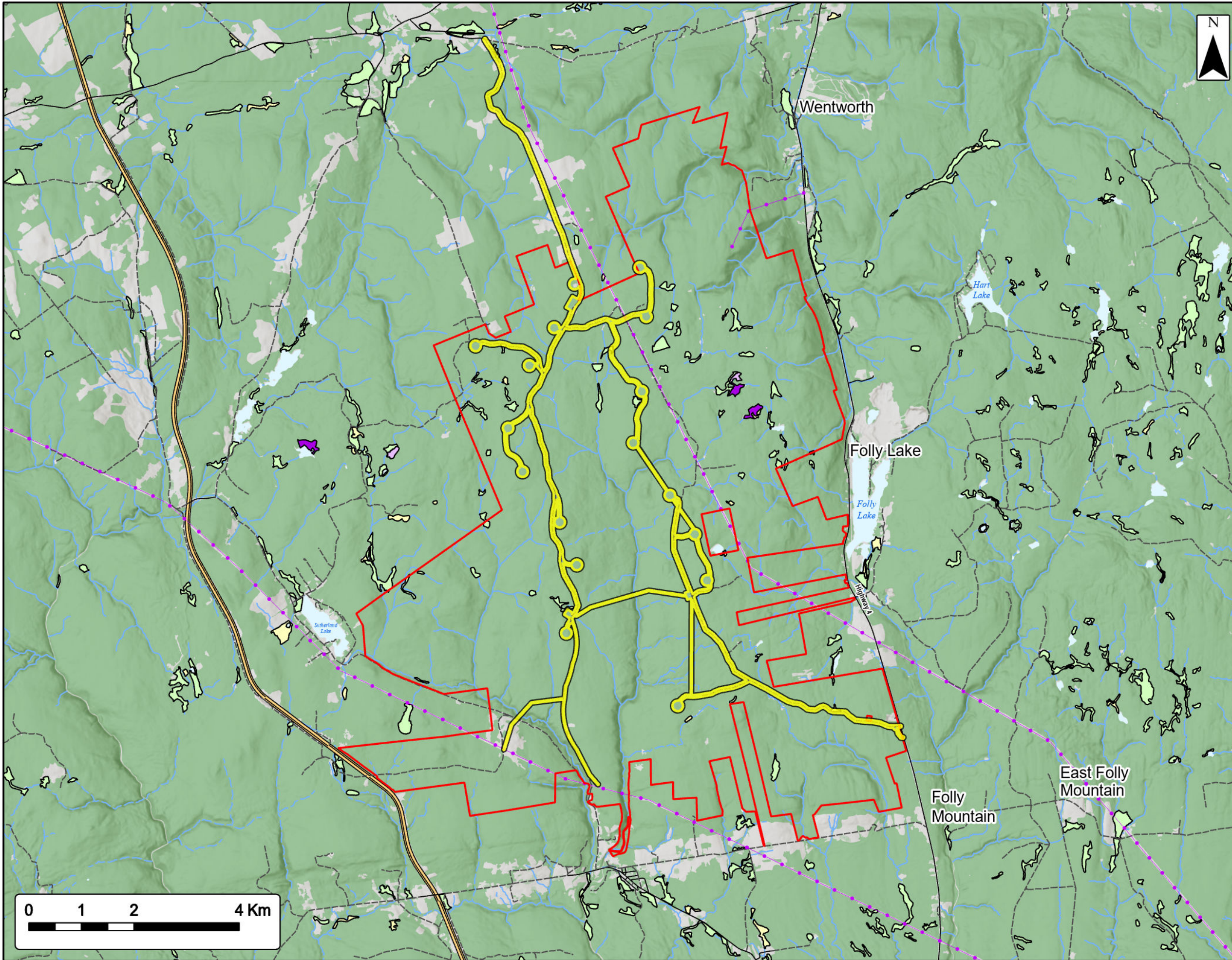
| | |
|-----------------------------|--|
| Study Area | |
| Assessment Area | |
| Electrofishing Location | |
| Utilities (line) | |
| Existing Transmission Lines | |
| Water Features | |
| Mapped Stream | |
| Mapped Indefinite Stream | |
| Mapped Wet Area | |
| Mapped Lakes and Rivers | |



Coordinate System: NAD83 UTM Zone 20N
Sources: ESRI Basemaps, GeoNOVA, NSTD, HERE, Garmin, USGS, NRCAN

| | | | |
|-------------|------------|------------|-------------|
| Date: | March 2023 | Project #: | 20-7376 |
| Scale: | 1:60,000 | Drawing #: | 7.14 |
| Drawn By: | M. Savelle | | |
| Checked By: | M. Smith | | |





**Higgins Mountain
Wind Farm Project**
NSNRR Wetlands Data



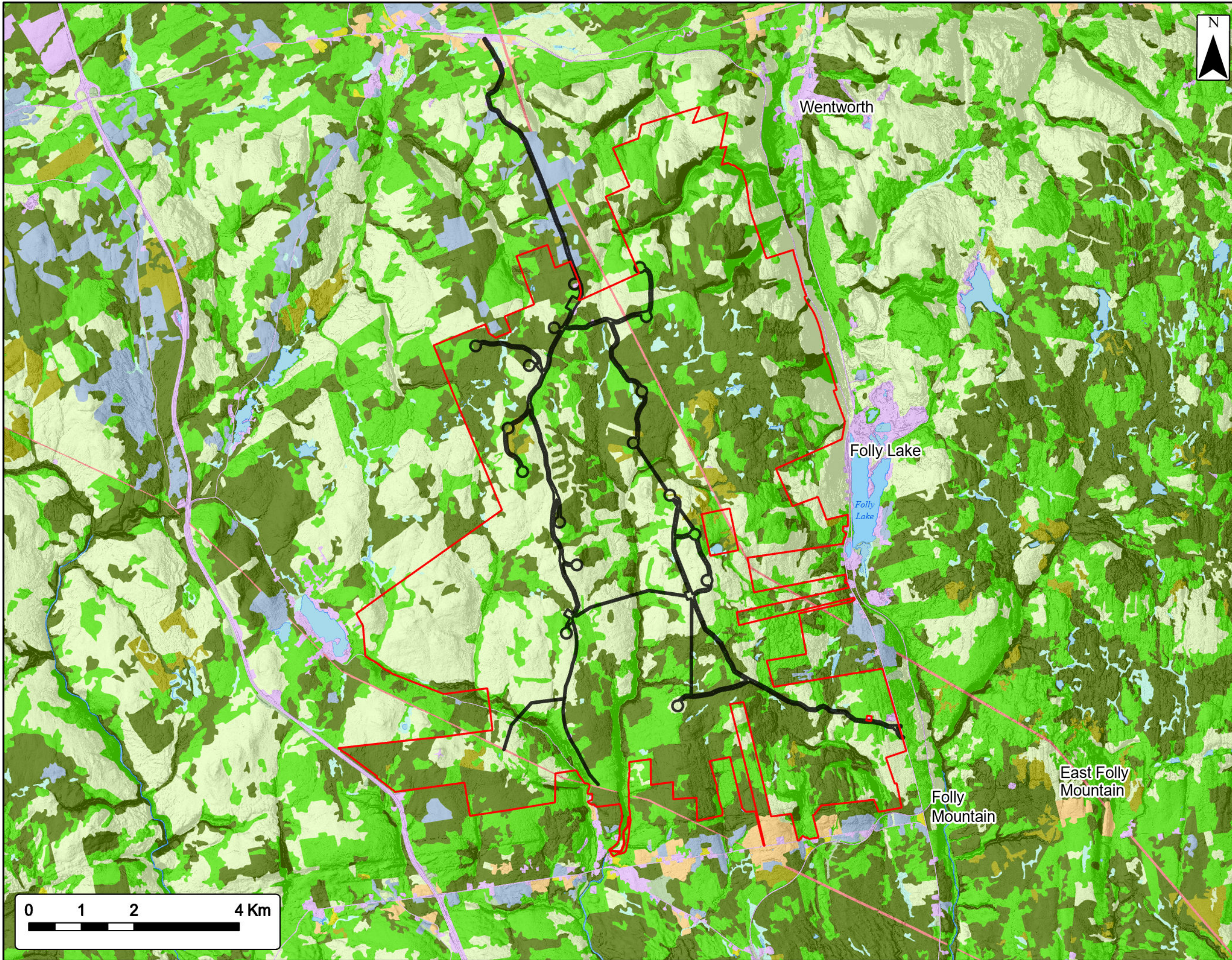
| | |
|--------------------------------|--|
| Study Area | |
| Assessment Area | |
| NSNRR Wetland Inventory | |
| Bog or Fen | |
| Fen | |
| Marsh | |
| Swamp | |
| Transportation | |
| Trans-Canada Highway | |
| Road | |
| Unpaved Road | |
| Utilities (line) | |
| Existing Transmission Lines | |
| Water Features | |
| Mapped Stream | |
| Mapped Indefinite Stream | |
| Mapped Lakes and Rivers | |



Coordinate System: NAD83 UTM Zone 20N
Sources: Esri Basemaps, GeoNOVA, SNSIS, NRCan, NSNRR, ACCDC, IBA Canada

| | | | |
|-------------|------------|------------|-------------|
| Date: | Mar 2023 | Project #: | 20-7376 |
| Scale: | 1:70,000 | Drawing #: | 7.15 |
| Drawn By: | P. Opra | | |
| Checked By: | M. Savelle | | |





**Higgins Mountain
Wind Farm Project**
NSTDB Land Cover



| | |
|---|--|
| Study Area | |
| Assessment Area | |
| Land Cover | |
| Agriculture | |
| Blueberries or Barren | |
| Bogs or Wetlands | |
| Brush | |
| Hardwood | |
| Harvests | |
| Mixedwood | |
| Old Field | |
| Softwood | |
| Urban, Landfill, Quarry, Transport Corridor | |
| Utility Corridor | |
| Water | |



Coordinate System: NAD83 UTM Zone 20N
Sources: Esri Basemaps, GeoNOVA, SNSIS, NRCan, NSNRR, ACCDC, IBA Canada

| | | | |
|-------------|------------|------------|-------------|
| Date: | Mar 2023 | Project #: | 20-7376 |
| Scale: | 1:70,000 | Drawing #: | 7.16 |
| Drawn By: | P. Opra | | |
| Checked By: | M. Savelle | | |

