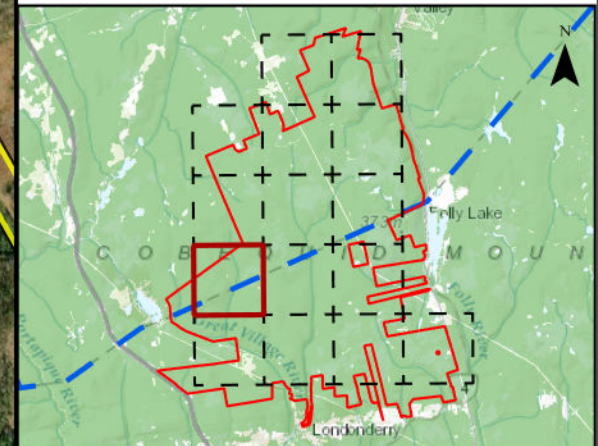


Higgins Mountain Wind Farm Project

Field Assessment



- Proposed Turbine Location
- Study Area
- Assessment Area
- Species Wildlife/ Pellet Survey
- Plant and Lichen



Coordinate System: NAD83 UTM Zone 20N Sources: ESRI Basemaps, GeoNOVA, NSD, HERE, Garmin, USGS, NRCAN

Date:	March 2023	Project #:	20-7376
Scale:	1:11,000	Drawing #:	7.111
Drawn By:	M. Savelle		
Checked By:	M. Smith		

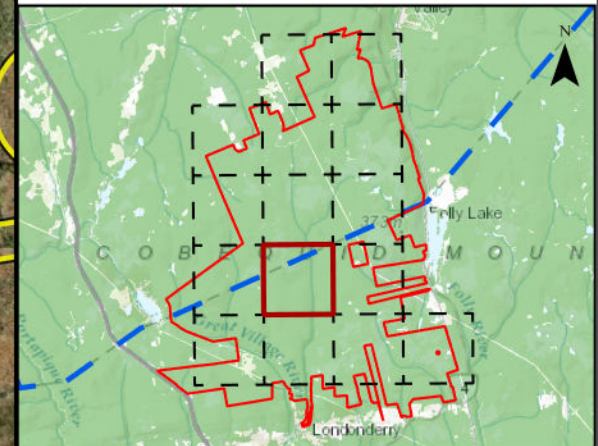


Higgins Mountain Wind Farm Project

Field Assessment



- Proposed Turbine Location
- Study Area
- Assessment Area
- Field Assessed Watercourse (WC)
- Field Assessed Wetland (WL)
- Winter Tracking
- Species Wildlife/ Pellet Survey
- Plant and Lichen



Coordinate System: NAD83 UTM Zone 20N
Sources: ESRI Basemaps, GeoNOVA, NSTD, HERE, Garmin, USGS, NRCAN

Date: March 2023	Project #: 20-7376
Scale: 1:11,000	Drawing #: 7.11J
Drawn By: M. Savelle	7.11J
Checked By: M. Smith	











Engineering - Surveying - Environmental
Bedford - Antigonish - Moncton - St. John's

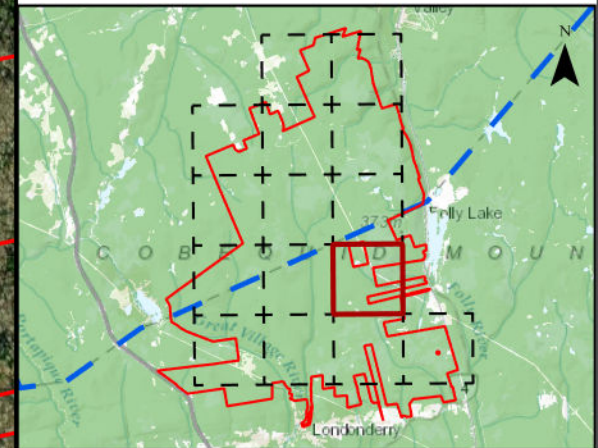


Higgins Mountain Wind Farm Project

Field Assessment



- Proposed Turbine Location 
- Study Area 
- Assessment Area 
- Field Assessed Watercourse (WC) 
- Field Assessed Wetland (WL) 
- Winter Tracking 
- Species Wildlife/ Pellet Survey 
- Plant and Lichen 

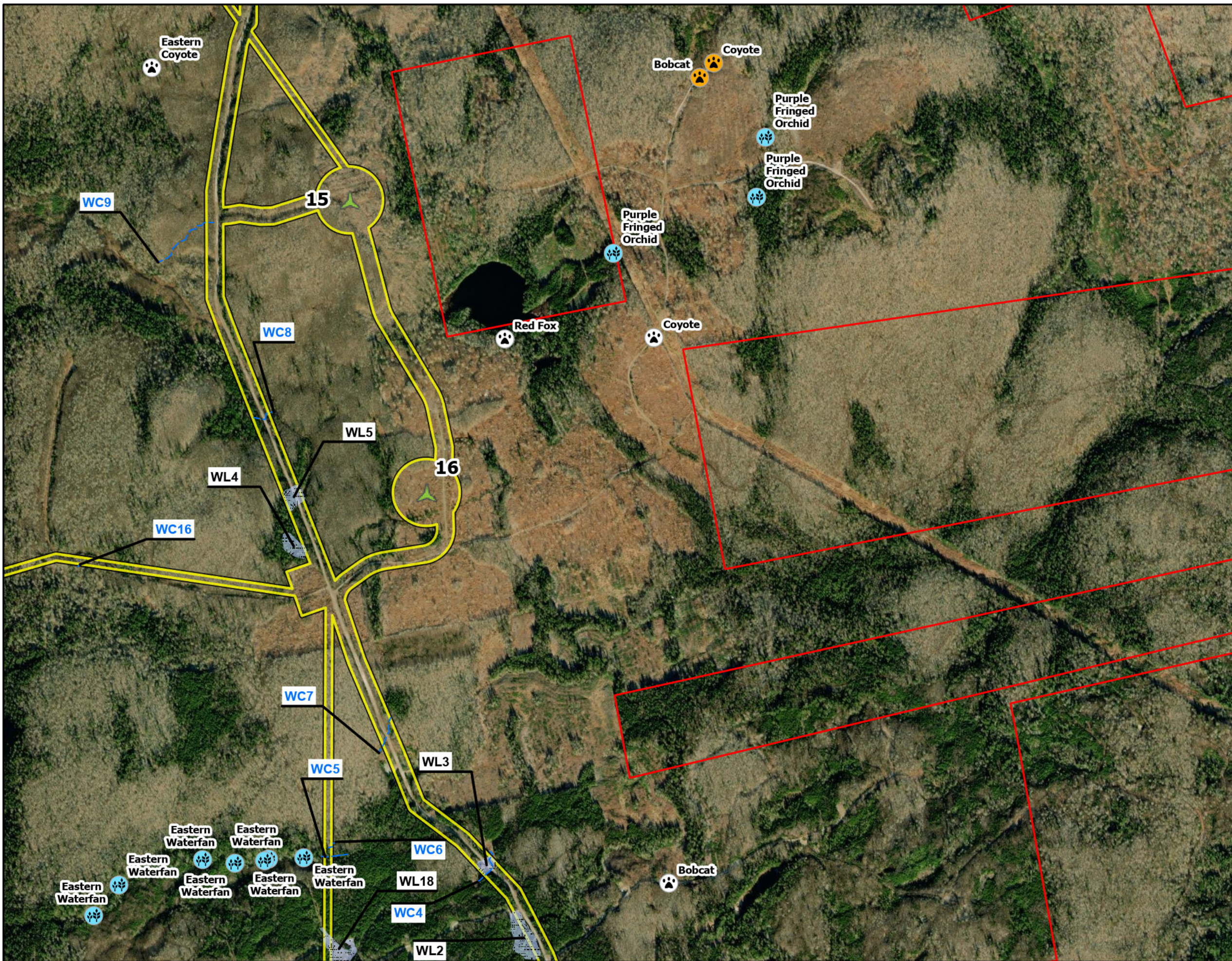


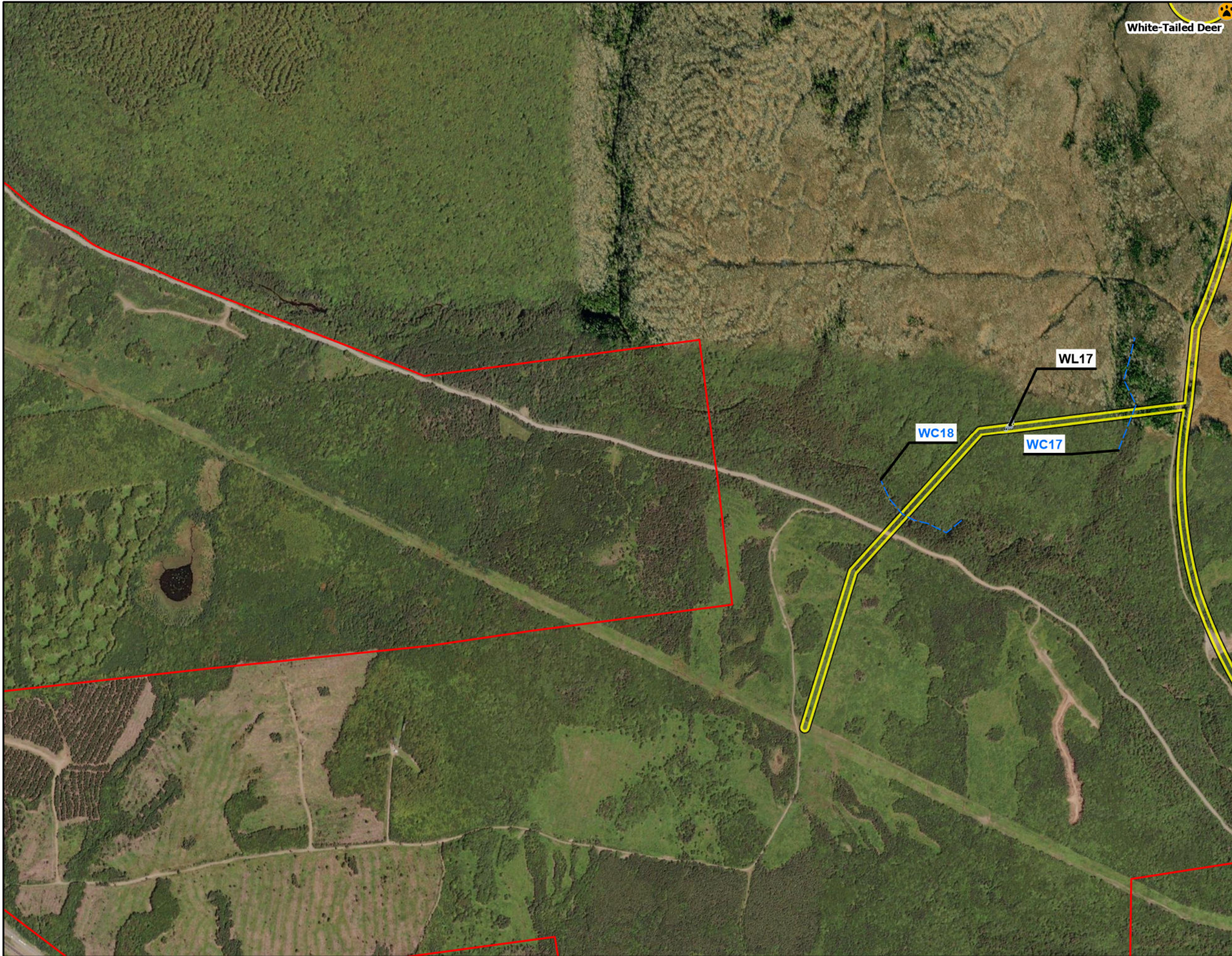
Coordinate System: NAD83 UTM Zone 20N Sources: ESRI Basemaps, GeoNOVA, NSD, HERE, Garmin, USGS, NRCAN

Date:	March 2023	Project #:	20-7376
Scale:	1:11,000	Drawing #:	7.11K
Drawn By:	M. Savelle		
Checked By:	M. Smith		



Engineering - Surveying - Environmental
Bedford - Antigonish - Moncton - St. John's





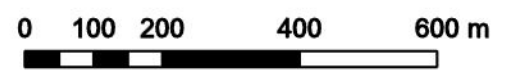
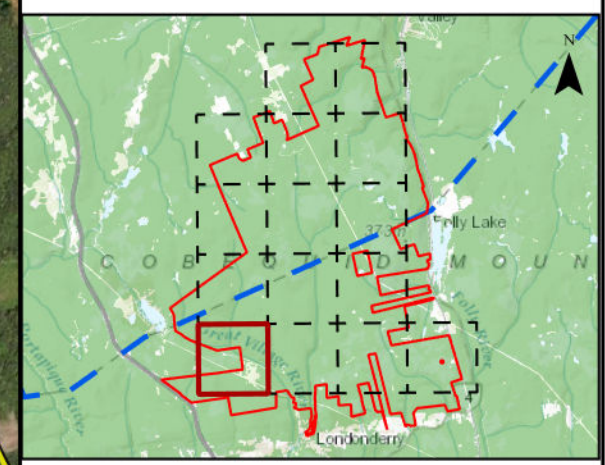
White-Tailed Deer 🐾

Higgins Mountain Wind Farm Project

Field Assessment



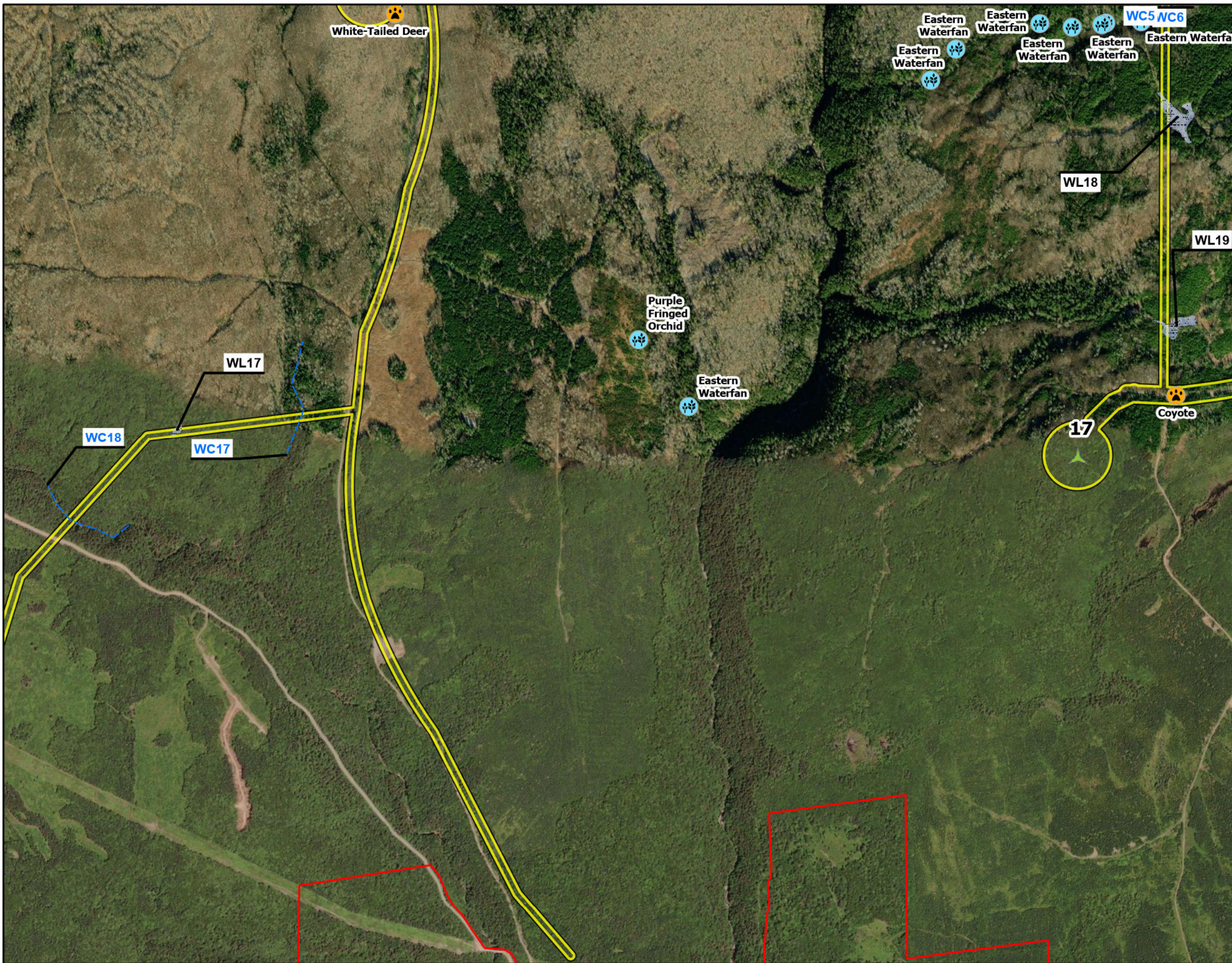
- Proposed Turbine Location
- Study Area
- Assessment Area
- Field Assessed Watercourse (WC)
- Field Assessed Wetland (WL)
- Species Wildlife/ Pellet Survey



Coordinate System: NAD83 UTM Zone 20N Sources: ESRI Basemaps, GeoNOVA, NSTD, HERE, Garmin, USGS, NRCAN

Date: March 2023	Project #: 20-7376
Scale: 1:11,000	Drawing #: 7.11L
Drawn By: M. Savelle	
Checked By: M. Smith	



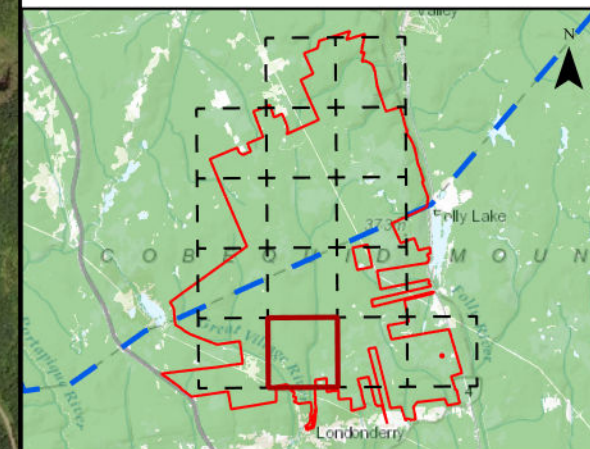


Higgins Mountain Wind Farm Project

Field Assessment



- Proposed Turbine Location
- Study Area
- Assessment Area
- Field Assessed Watercourse (WC)
- Field Assessed Wetland (WL)
- Species Wildlife/ Pellet Survey
- Plant and Lichen



Coordinate System: NAD83 UTM Zone 20N Sources: ESRI Basemaps, GeoNOVA, NSD, HERE, Garmin, USGS, NRCAN

Date: March 2023	Project #: 20-7376
Scale: 1:11,000	Drawing #: 7.11M
Drawn By: M. Savelle	7.11M
Checked By: M. Smith	

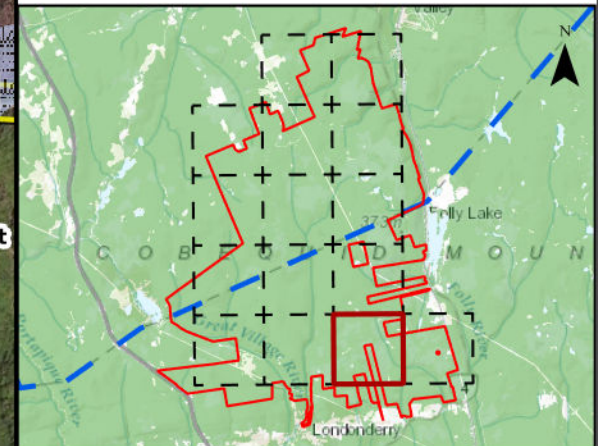


Higgins Mountain Wind Farm Project

Field Assessment



- Proposed Turbine Location
- Study Area
- Assessment Area
- Field Assessed Watercourse (WC)
- Field Assessed Wetland (WL)
- Winter Tracking
- Species Wildlife/ Pellet Survey
- Plant and Lichen

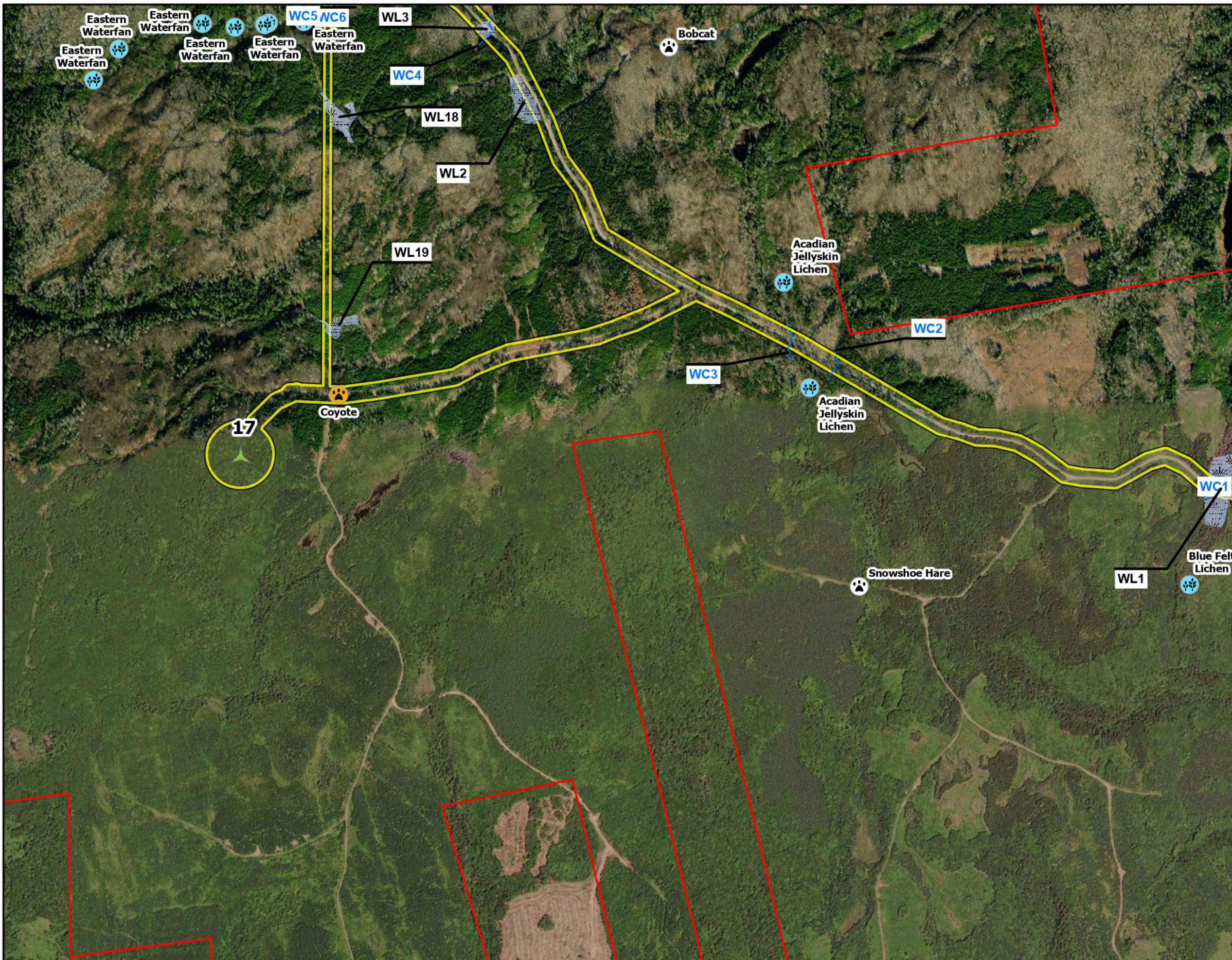


Coordinate System: NAD83 UTM Zone 20N Sources: ESRI Basemaps, GeoNOVA, NSTD, HERE, Garmin, USGS, NRCAN

Date: March 2023	Project #: 20-7376
Scale: 1:11,000	Drawing #: 7.11N
Drawn By: M. Savelle	7.11N
Checked By: M. Smith	



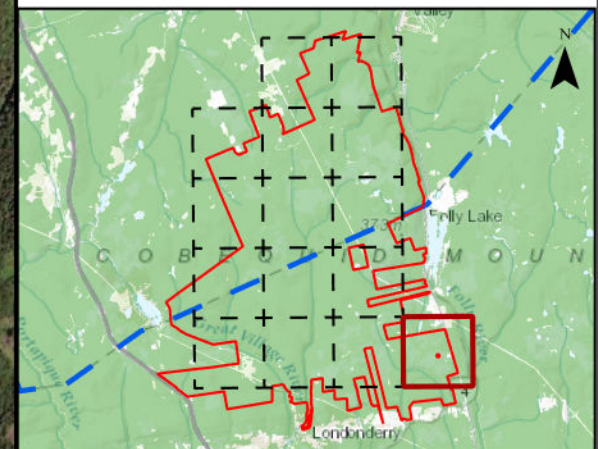
Engineering - Surveying - Environmental
Bedford - Antigonish - Moncton - St. John's



**Higgins Mountain
Wind Farm Project**
Field Assessment



- Study Area
- Assessment Area
- Field Assessed Watercourse (WC)
- Field Assessed Wetland (WL)
- Winter Tracking
- Plant and Lichen



Coordinate System: NAD83 UTM Zone 20N Sources: ESRI Basemaps, GeoNOVA, NSTD, HERE, Garmin, USGS, NRCan

Date:	March 2023	Project #:	20-7376
Scale:	1:11,000	Drawing #:	7.110
Drawn By:	M. Savelle		
Checked By:	M. Smith		



Engineering - Surveying - Environmental
Bedford - Antigonish - Moncton - St. John's