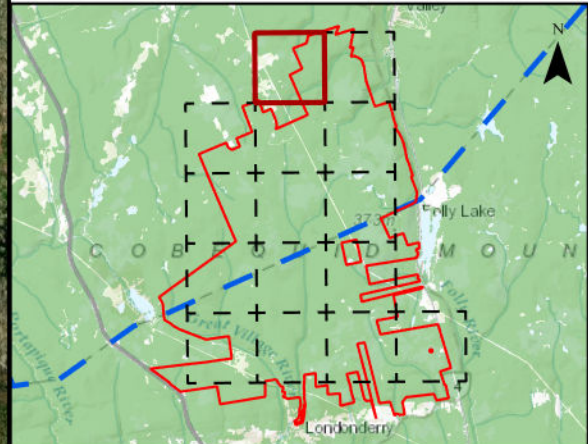


**Higgins Mountain
Wind Farm Project**
Field Assessment



- Study Area
- Assessment Area
- Field Assessed Watercourse (WC)
- Winter Tracking
- Species Wildlife/ Pellet Survey



Coordinate System: NAD83 UTM Zone 20N Sources: ESRI Basemaps, GeoNOVA, NSTD, HERE, Garmin, USGS, NRCan

Date: March 2023	Project #: 20-7376
Scale: 1:11,000	Drawing #: 7.11A
Drawn By: M. Savelle	
Checked By: M. Smith	





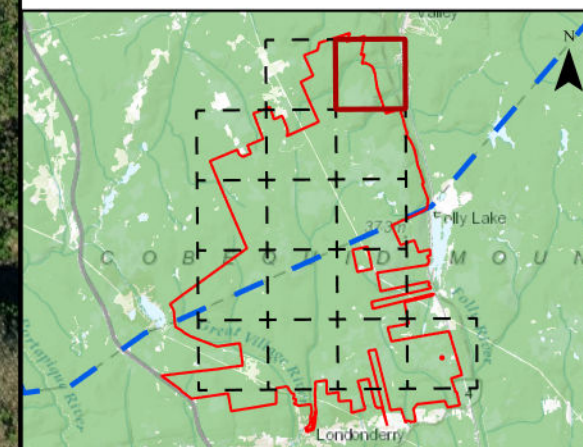
**Higgins Mountain
Wind Farm Project**
Field Assessment



Study Area



Winter Tracking



Coordinate System: NAD83 UTM Zone 20N Sources: ESRI Basemaps, GeoNOVA, NSTD, HERE, Garmin, USGS, NRCan

Date:	March 2023	Project #:	20-7376
Scale:	1:11,000	Drawing #:	7.11B
Drawn By:	M. Savelle		
Checked By:	M. Smith		



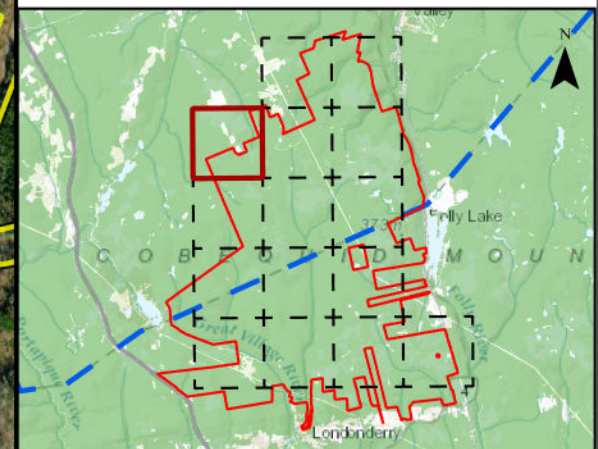
Engineering - Surveying - Environmental
Bedford - Antigonish - Moncton - St. John's

Higgins Mountain Wind Farm Project

Field Assessment



- Proposed Turbine Location
- Study Area
- Assessment Area
- Field Assessed Watercourse (WC)
- Field Assessed Wetland (WL)
- Species Wildlife/ Pellet Survey
- Plant and Lichen



Coordinate System: NAD83 UTM Zone 20N
Sources: ESRI Basemaps, GeoNOVA, NSD, HERE, Garmin, USGS, NRCAN

Date:	March 2023	Project #:	20-7376
Scale:	1:11,000	Drawing #:	7.11C
Drawn By:	M. Savelle		
Checked By:	M. Smith		

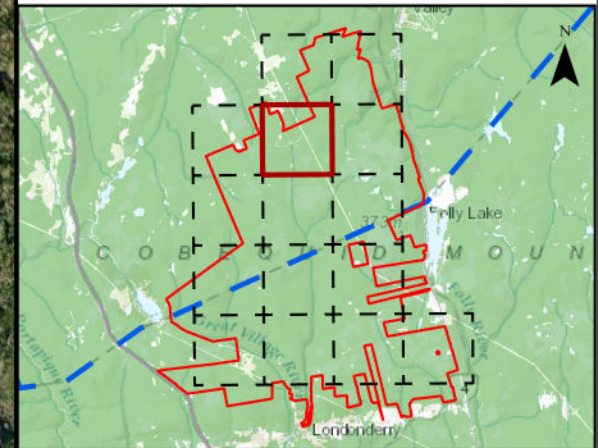


Engineering - Surveying - Environmental
Bedford - Antigonish - Moncton - St. John's

**Higgins Mountain
Wind Farm Project**
Field Assessment



- Proposed Turbine Location
- Study Area
- Assessment Area
- Field Assessed Watercourse (WC)
- Field Assessed Wetland (WL)
- Species Wildlife/ Pellet Survey
- Plant and Lichen

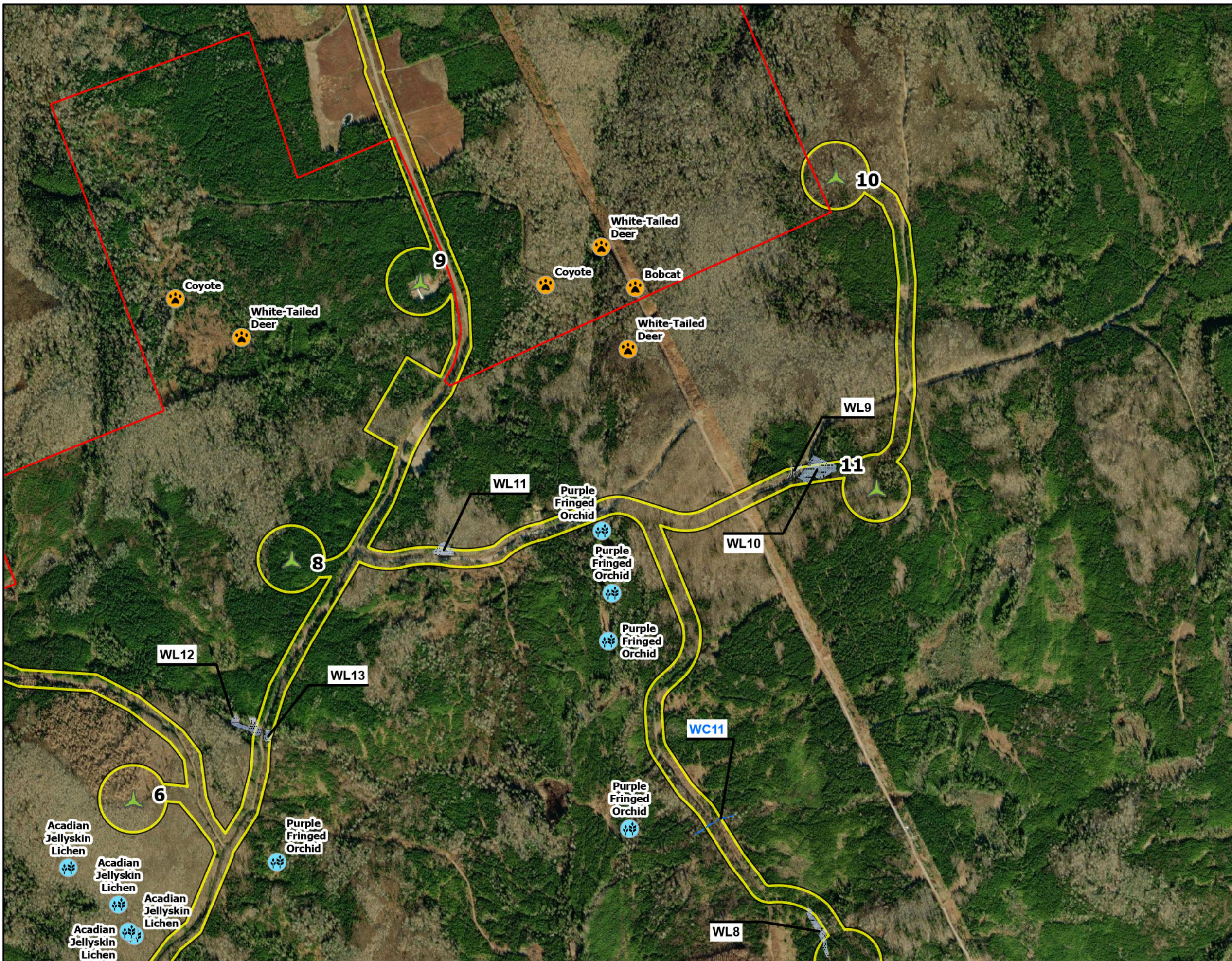


Coordinate System: NAD83 UTM Zone 20N
Sources: ESRI Basemaps, GeoNOVA, NSD, HERE, Garmin, USGS, NRCAN

Date: March 2023	Project #: 20-7376
Scale: 1:11,000	Drawing #: 7.11D
Drawn By: M. Savelle	
Checked By: M. Smith	



Engineering - Surveying - Environmental
Bedford - Antigonish - Moncton - St. John's



**Higgins Mountain
Wind Farm Project**
Field Assessment



Proposed Turbine Location



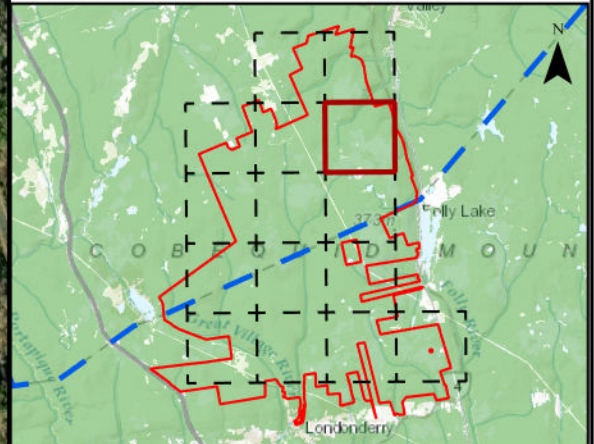
Study Area



Assessment Area



Winter Tracking



Coordinate System: NAD83 UTM Zone 20N

Sources: ESRI Basemaps, GeoNOVA, NSTD, HERE, Garmin, USGS, NRCan

Date: March 2023

Project #: 20-7376

Scale: 1:11,000

Drawing #:

Drawn By: M. Savelle

7.11E

Checked By: M. Smith



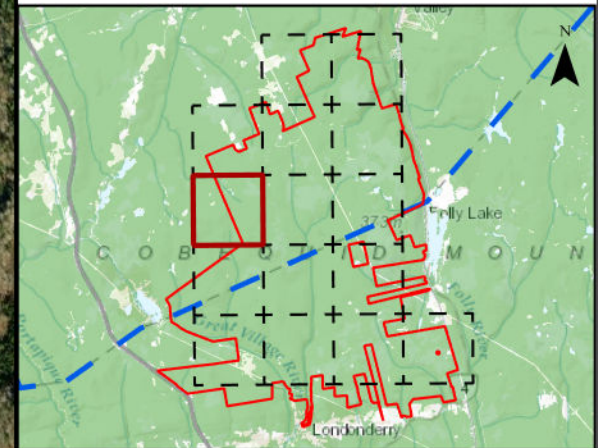
Engineering - Surveying - Environmental
Bedford - Antigonish - Moncton - St. John's

Higgins Mountain Wind Farm Project

Field Assessment



- Proposed Turbine Location
- Study Area
- Assessment Area
- Field Assessed Watercourse (WC)
- Field Assessed Wetland (WL)
- Plant and Lichen

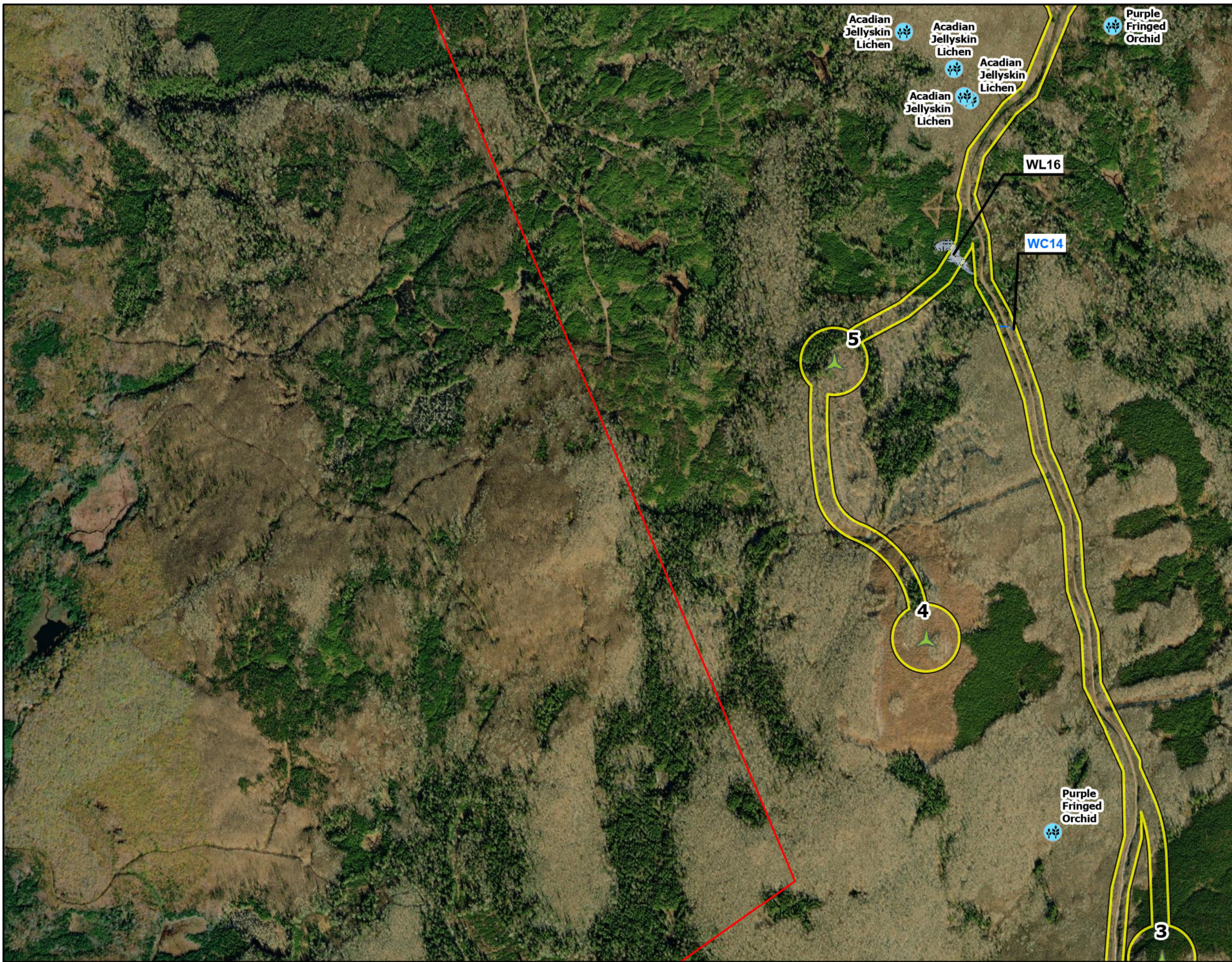


Coordinate System: NAD83 UTM Zone 20N Sources: ESRI Basemaps, GeoNOVA, NSD, HERE, Garmin, USGS, NRCAN

Date:	March 2023	Project #:	20-7376
Scale:	1:11,000	Drawing #:	7.11F
Drawn By:	M. Savelle		
Checked By:	M. Smith		



Engineering - Surveying - Environmental
Bedford - Antigonish - Moncton - St. John's



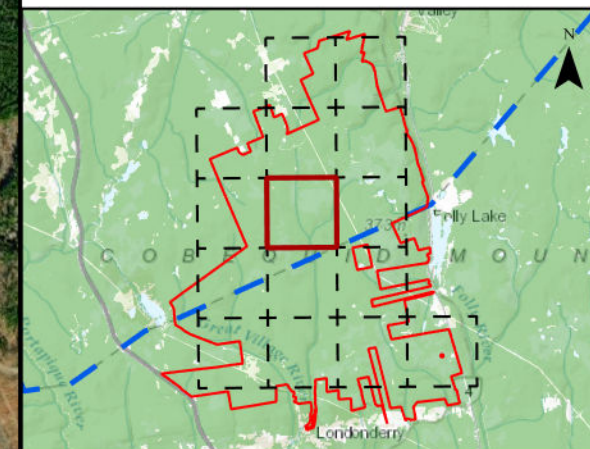


Higgins Mountain Wind Farm Project

Field Assessment



- Proposed Turbine Location
- Study Area
- Assessment Area
- Field Assessed Watercourse (WC)
- Field Assessed Wetland (WL)
- Winter Tracking
- Plant and Lichen



Coordinate System: NAD83 UTM Zone 20N
Sources: ESRI Basemaps, GeoNOVA, NSTD, HERE, Garmin, USGS, NRCAN


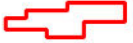






Date:	March 2023	Project #:	20-7376
Scale:	1:11,000	Drawing #:	7.11G
Drawn By:	M. Savelle		
Checked By:	M. Smith		

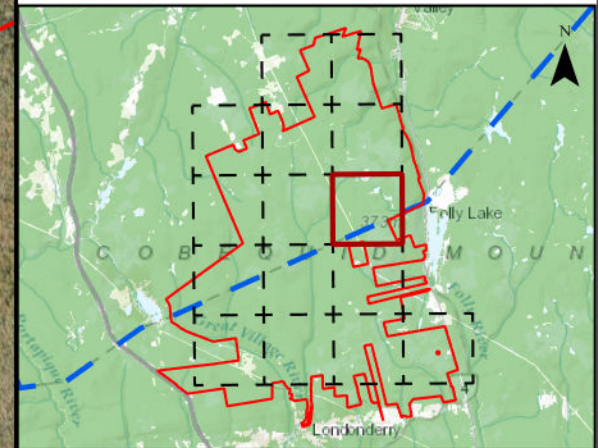


Engineering - Surveying - Environmental
Bedford - Antigonish - Moncton - St. John's

**Higgins Mountain
Wind Farm Project**
Field Assessment



- Proposed Turbine Location 
- Study Area 
- Assessment Area 
- Field Assessed Watercourse (WC) 
- Field Assessed Wetland (WL) 
- Winter Tracking 
- Species Wildlife/ Pellet Survey 
- Plant and Lichen 



Coordinate System: NAD83 UTM Zone 20N
Sources: ESRI Basemaps, GeoNOVA, NSTD, HERE, Garmin, USGS, NRCan

Date:	March 2023	Project #:	20-7376
Scale:	1:11,000	Drawing #:	7.11H
Drawn By:	M. Savelle		
Checked By:	M. Smith		



Engineering - Surveying - Environmental
Bedford - Antigonish - Moncton - St. John's

