

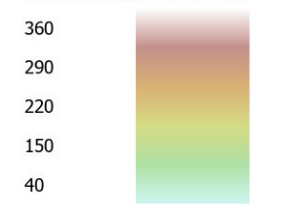
# Higgins Mountain Wind Farm Project

Geomorphology



Study Area	
Assessment Area	
<b>Transportation</b>	
Trans-Canada Highway	
Road	
Unpaved Road	
<b>Water Features</b>	
Mapped Stream	
Mapped Indefinite Stream	
Mapped Lakes and Rivers	

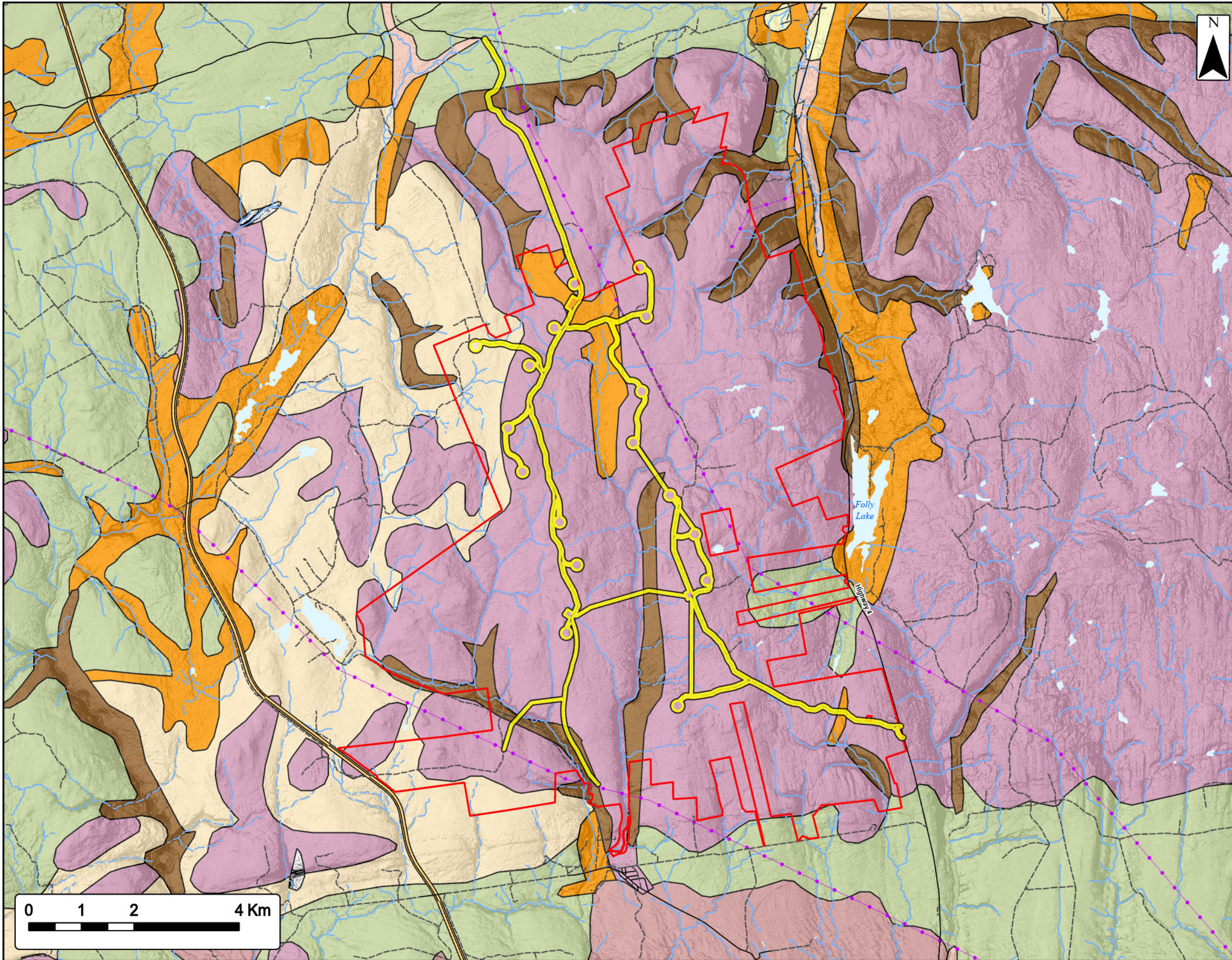
**Elevation (Metres ASL)**



Coordinate System: NAD83 UTM Zone 20N Sources: Esri Basemaps, GeoNOVA, SNSIS, NRCan, NSNRR, ACCDC, IBA Canada

Date:	Mar 2023	Project #:	20-7376
Scale:	1:60,000	Drawing #:	<b>7.3</b>
Drawn By:	P. Opra		
Checked By:	M. Savelle		





# Higgins Mountain Wind Farm Project

## Surficial Geology

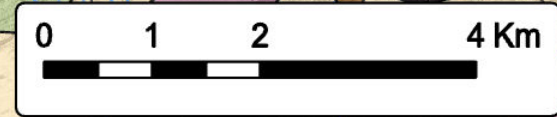


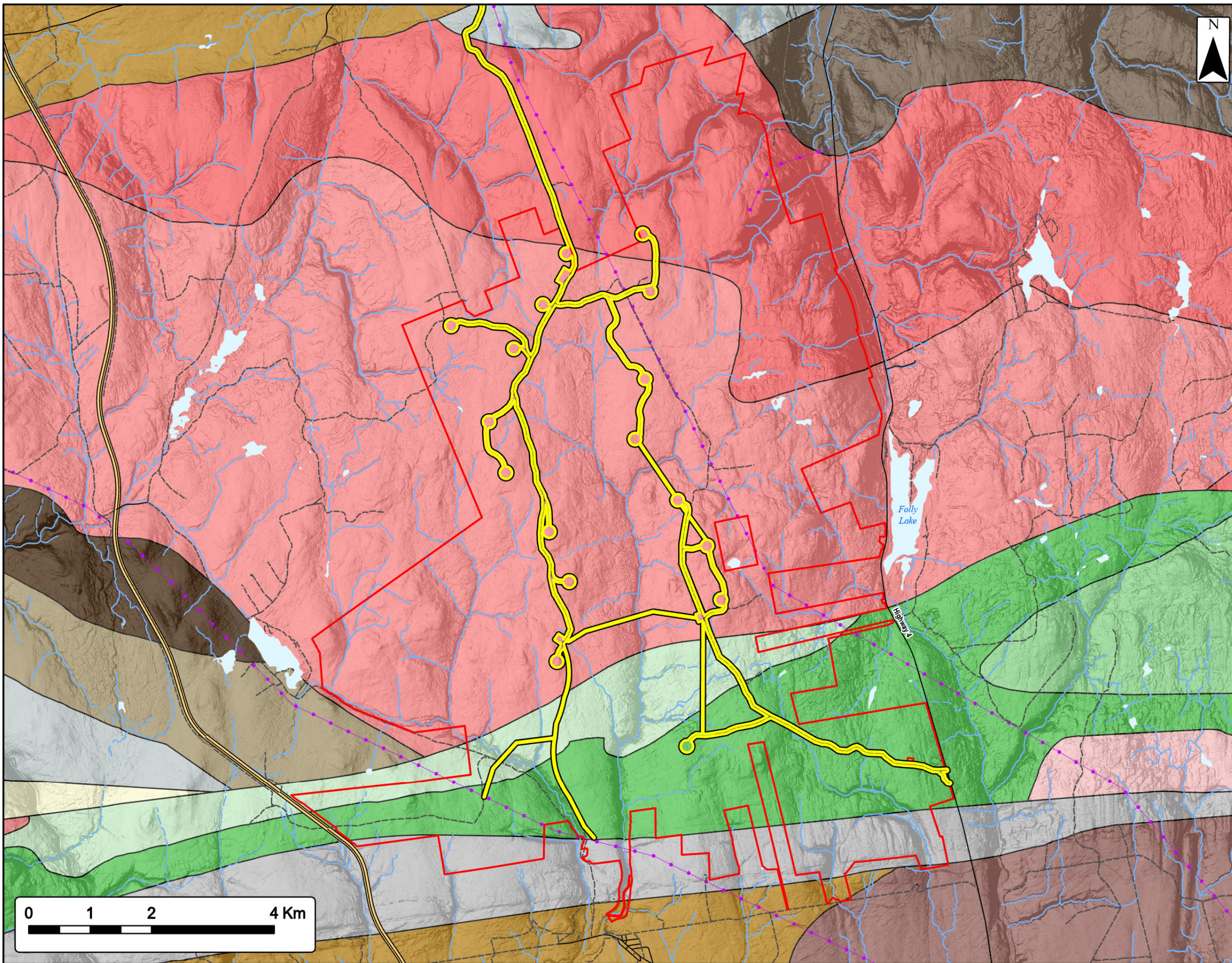
Study Area	
Assessment Area	
<b>Surficial Geology By Unit</b>	
Alluvial Deposits	
Bedrock	
Colluvial Deposits	
Hummocky Ground Moraine	
Kame Fields and Esker Systems	
Outwash Fans, Deltas, and Valley Train Deposits	
Silty Till Plain	
Stony Till Plain	
<b>Transportation</b>	
Trans-Canada Highway	
Road	
Unpaved Road	
<b>Utilities (line)</b>	
Existing Transmission Lines	
<b>Water Features</b>	
Mapped Stream	
Mapped Indefinite Stream	
Mapped Lakes and Rivers	



Coordinate System: NAD83 UTM Zone 20N Sources: Esri Basemaps, GeoNOVA, SNSIS, NRCan, NSNRR, ACCDC, IBA Canada

Date:	Mar 2023	Project #:	20-7376
Scale:	1:70,000	Drawing #:	<b>7.4</b>
Drawn By:	P. Opra		
Checked By:	M. Savelle		





# Higgins Mountain Wind Farm Project

## Bedrock Geology

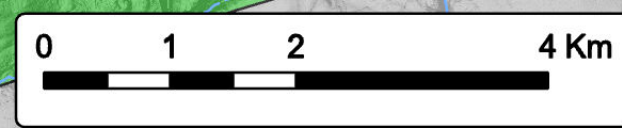


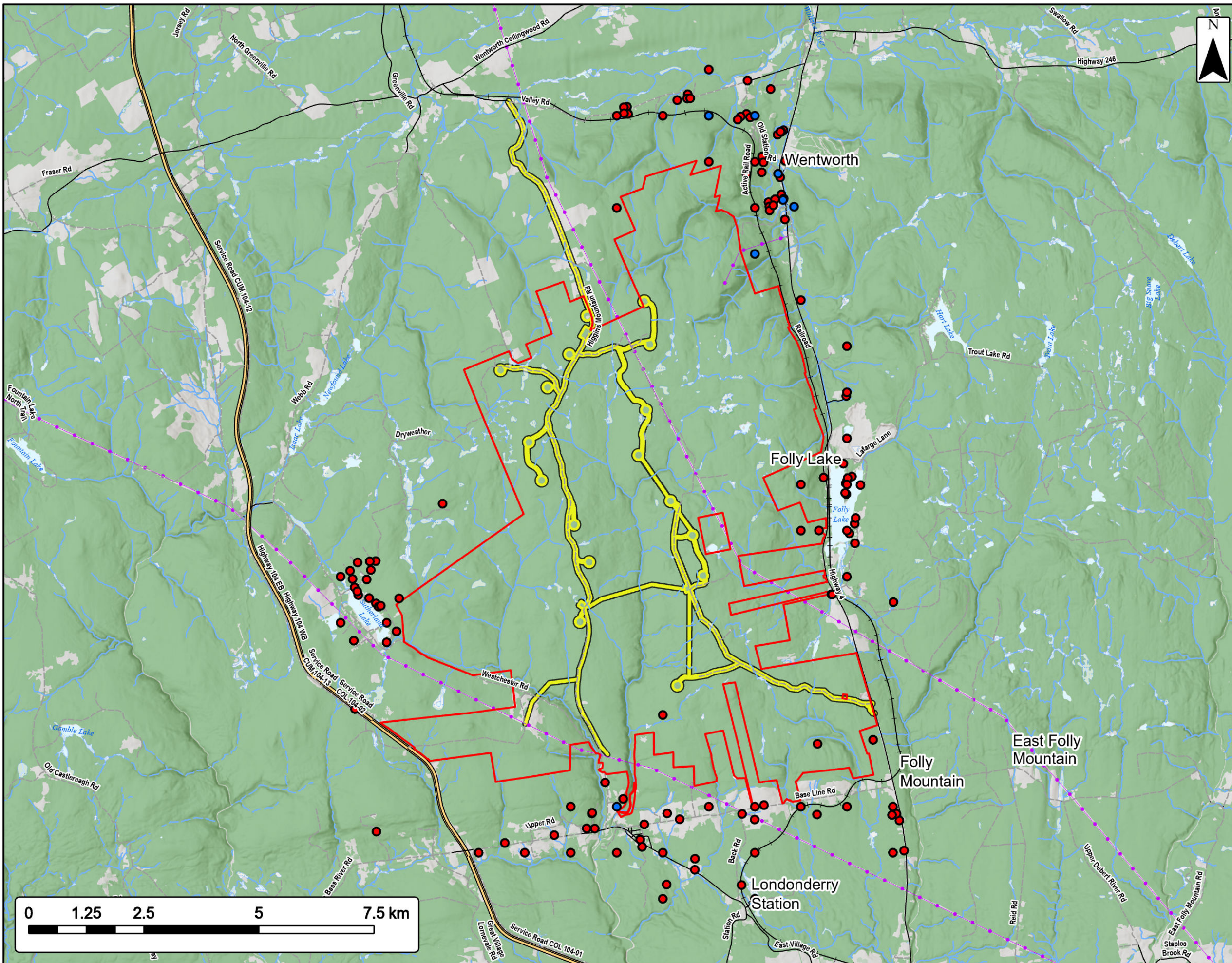
Study Area		<b>Transportation</b>		Trans-Canada Highway	
Assessment Area				Road	
<b>Bedrock Geology</b>				Unpaved Road	
Pictou Group		<b>Utilities (line)</b>		Existing Transmission Lines	
Boss Point Formation		<b>Water Features</b>		Mapped Stream	
Parrsboro Formation				Mapped Indefinite Stream	
Mabou Group				Mapped Lakes and Rivers	
Greville River Formation					
Fountain Lake Group					
Byers Brook Formation					
Portapique River Formation					
Wilson Brook Formation					
Great Village River Gneiss					
Gamble Brook Formation					
Folly River Formation					
Devonian - Carboniferous Granite: Cape Breton Island					
Devonian - Carboniferous Diorite - Grabro					
Neoproterozoic Granitoid					



Coordinate System: NAD83 UTM Zone 20N  
Sources: Esri Basemaps, GeoNOVA, SNSIS, NRCan, NSNRR, ACCDC, IBA Canada

Date:	Mar 2023	Project #:	20-7376
Scale:	1:60,000	Drawing #:	<b>7.5</b>
Drawn By:	P. Opra		
Checked By:	M. Savelle		





# Higgins Mountain Wind Farm Project

## Groundwater Wells

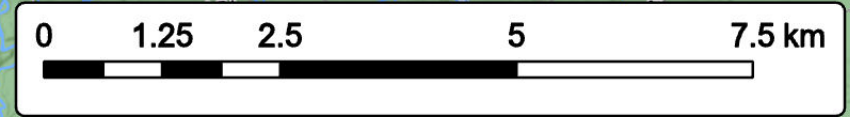


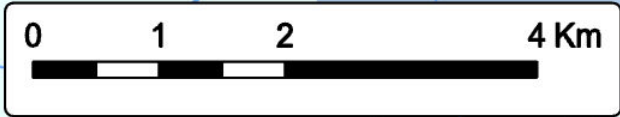
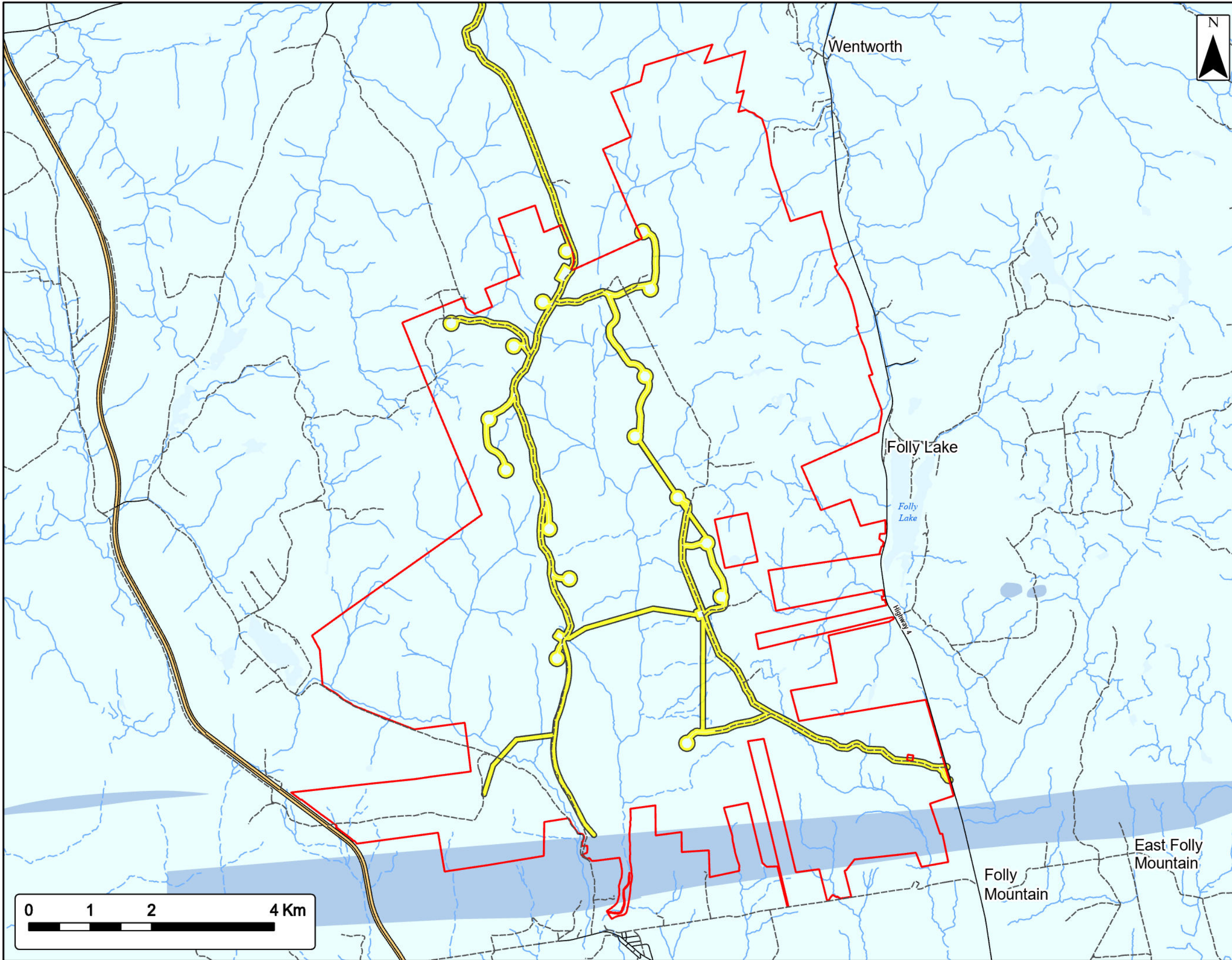
Study Area	
Assessment Area	
<b>Groundwater Well</b>	
Drilled	
Dug	
<b>Utilities (line)</b>	
Existing Transmission Lines	
<b>Transportation</b>	
Trans-Canada Highway	
Road	
Unpaved Road	
Railroad	
<b>Water Features</b>	
Mapped Stream	
Mapped Indefinite Stream	
Mapped Wet Area	
Mapped Lakes and Rivers	



Coordinate System: NAD83 UTM Zone 20N  
Sources: ESRI Basemaps, GeoNOVA, NSTD, HERE, Garmin, USGS, NRCAN

Date:	March 2023	Project #:	20-7376
Scale:	1:80,000	Drawing #:	<b>7.6</b>
Drawn By:	M. Savelle		
Checked By:	M. Smith		





# Higgins Mountain Wind Farm Project

Karst Risk



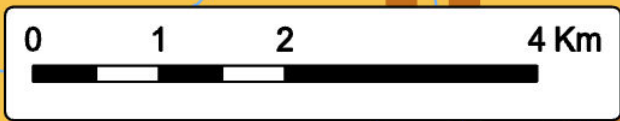
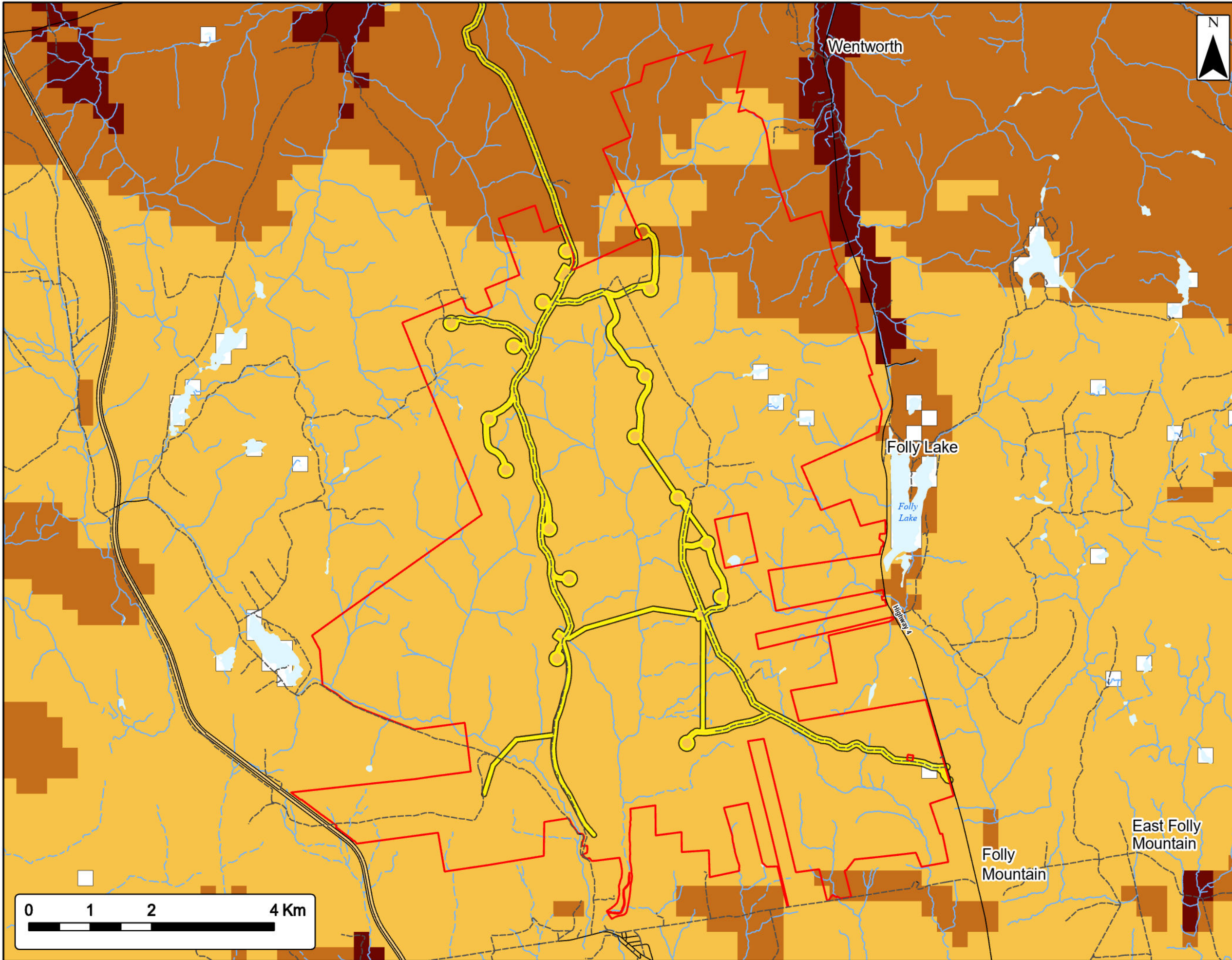
Study Area	
Assessment Area	
<b>Karst Risk</b>	
Medium Risk	
Low Risk	
<b>Transportation</b>	
Trans-Canada Highway	
Road	
Unpaved Road	
<b>Water Features</b>	
Mapped Stream	
Mapped Indefinite Stream	
Mapped Lakes and Rivers	



Coordinate System: NAD83 UTM Zone 20N Sources: Esri Basemaps, GeoNOVA, SNSIS, NRCan, NSNRR, ACCDC, IBA Canada

Date:	Mar 2023	Project #:	20-7376
Scale:	1:60,000	Drawing #:	<b>7.7</b>
Drawn By:	P. Opra		
Checked By:	M. Savelle		





# Higgins Mountain Wind Farm Project

## Radon Potential



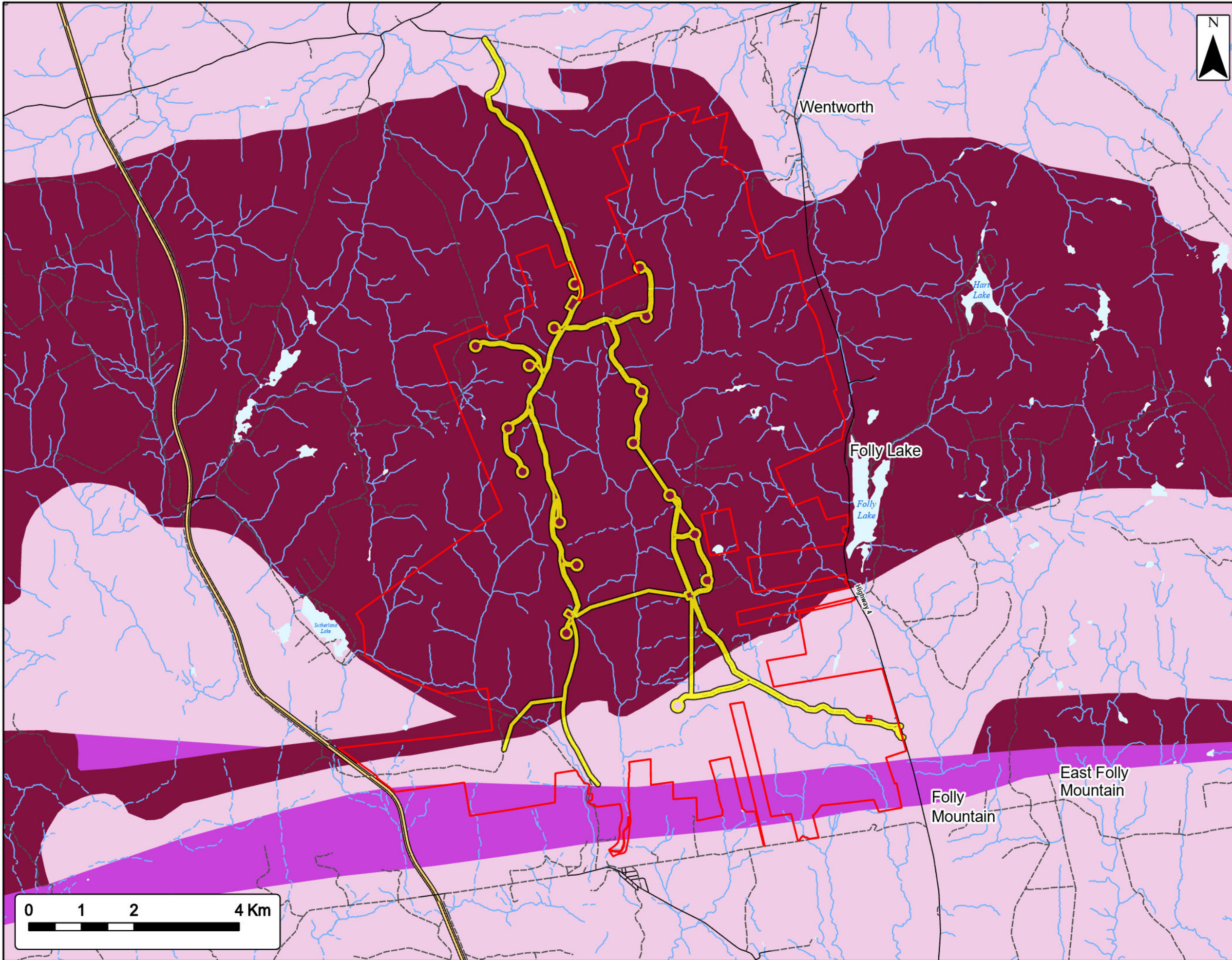
Study Area	
Assessment Area	
<b>Radon Potential</b>	
High (171-275)	
Medium (121-170)	
Low (11-120)	
Water Feature/No Data (0-10)	
<b>Transportation</b>	
Trans-Canada Highway	
Road	
Unpaved Road	
<b>Water Features</b>	
Mapped Stream	
Mapped Indefinite Stream	
Mapped Lakes and Rivers	



Coordinate System: NAD83 UTM Zone 20N  
 Sources: Esri Basemaps, GeoNOVA, SNSIS, NRCan, NSNRR, ACCDC, IBA Canada

Date:	Mar 2023	Project #:	20-7376
Scale:	1:60,000	Drawing #:	<b>7.8</b>
Drawn By:	P. Opra		
Checked By:	M. Savelle		





**Higgins Mountain  
Wind Farm Project**  
*Arsenic Risk*



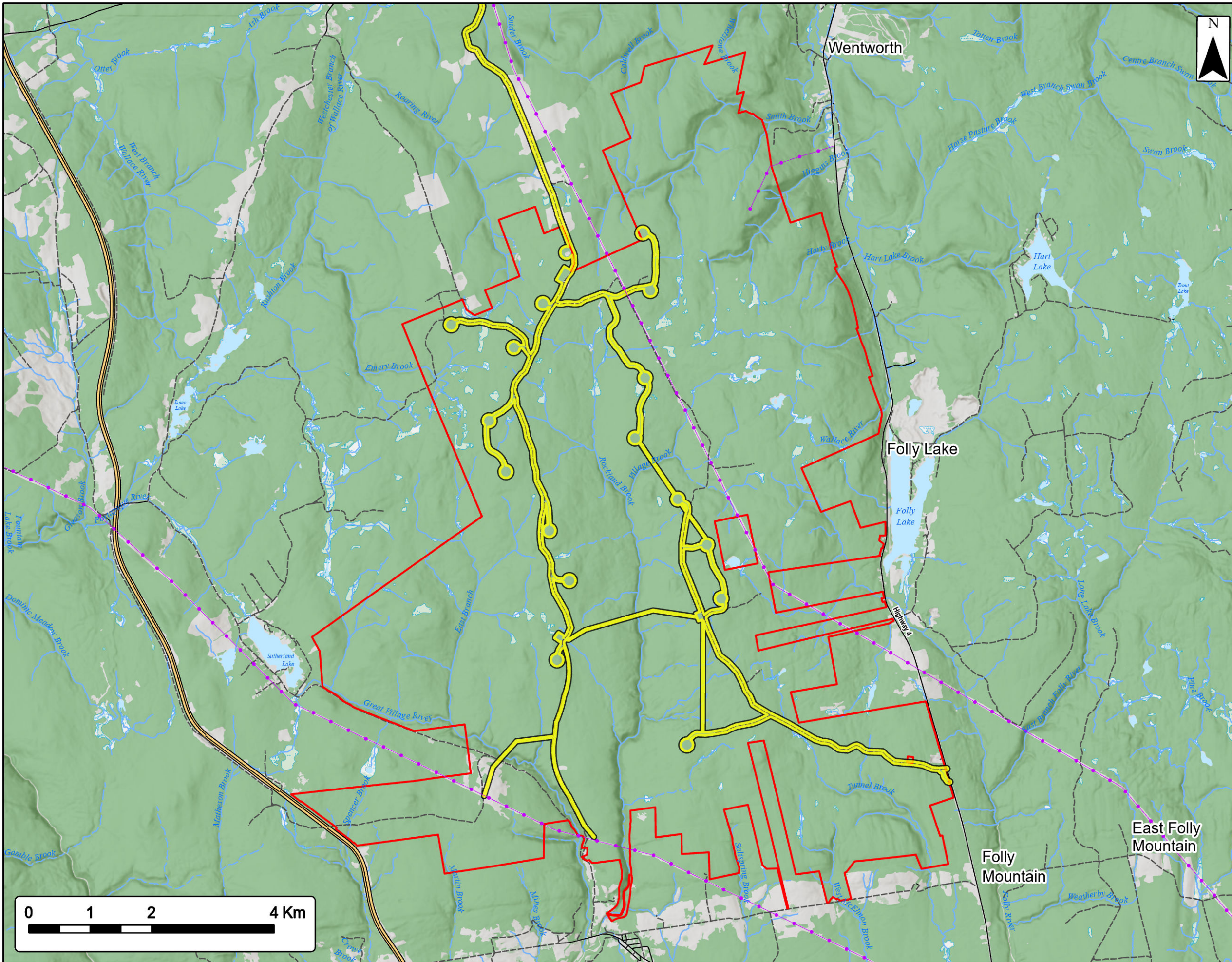
Study Area	
Assessment Area	
<b>Arsenic Risk in Bedrock Water Wells</b>	
High Risk	
Medium Risk	
Low	
<b>Transportation</b>	
Trans-Canada Highway	
Road	
Unpaved Road	
<b>Water Features</b>	
Mapped Stream	
Mapped Indefinite Stream	
Mapped Lakes and Rivers	



Coordinate System: NAD83 UTM Zone 20N  
Sources: Esri Basemaps, GeoNOVA, SNSIS, NRCan, NSNRR, ACCDC, IBA Canada

Date:	Mar 2023	Project #:	20-7376
Scale:	1:70,000	Drawing #:	<b>7.9</b>
Drawn By:	P. Opra		
Checked By:	M. Savelle		





# Higgins Mountain Wind Farm Project

Desktop Identified Freshwater Features



Study Area	
Assessment Area	
<b>Transportation</b>	
Trans-Canada Highway	
Road	
Unpaved Road	
<b>Utilities (line)</b>	
Existing Transmission Lines	
<b>Water Features</b>	
Mapped Stream	
Mapped Indefinite Stream	
Mapped Lakes and Rivers	
Mapped Wet Area	



Coordinate System: NAD83 UTM Zone 20N  
Sources: Esri Basemaps, GeoNOVA, SNSIS, NRCAN, NSNRR, ACCDG, IBA Canada

Date:	Mar 2023	Project #:	20-7376
Scale:	1:60,000	Drawing #:	<b>7.10</b>
Drawn By:	P. Opra		
Checked By:	M. Savelle		

