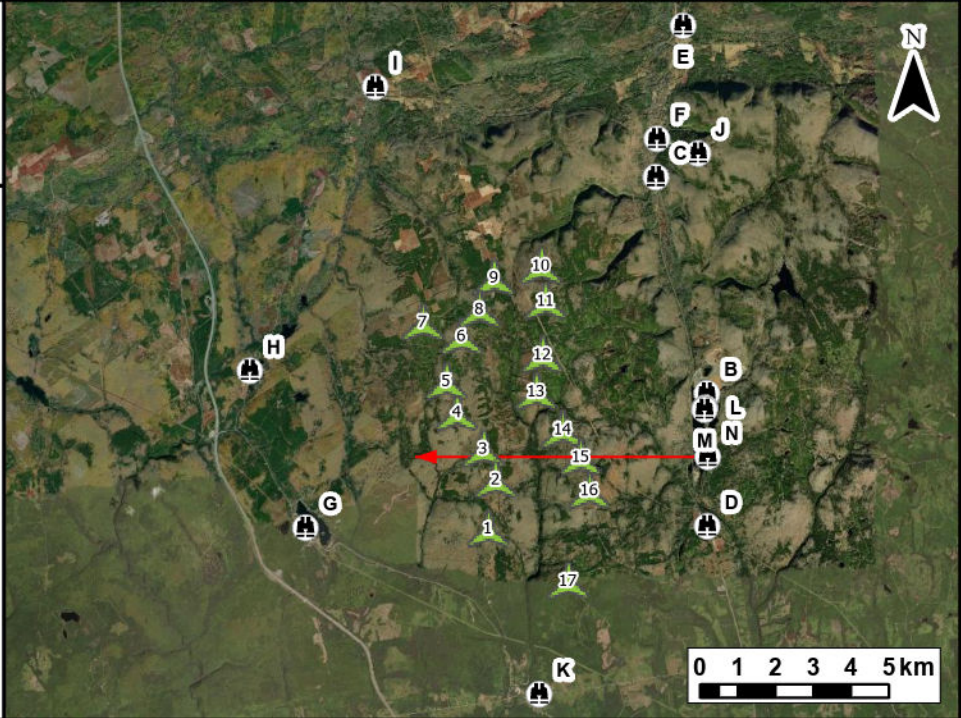


Notes:
 1. Data Sources: GeoNova, Client
 2. Basemaps: Esri, DigitalGlobe, GeoEye, Earthstar Geographics, CNES/Airbus DS, USDA, USGS, AeroGRID, IGN, and the GIS User Community
 3. Projection: NAD83 UTM Zone 20

Legend

- Camera Locations
- Camera Bearing
- Proposed Turbine Location
- Turbines Visible
- Turbines Hidden by Topography
- Turbines Hidden by Foliage



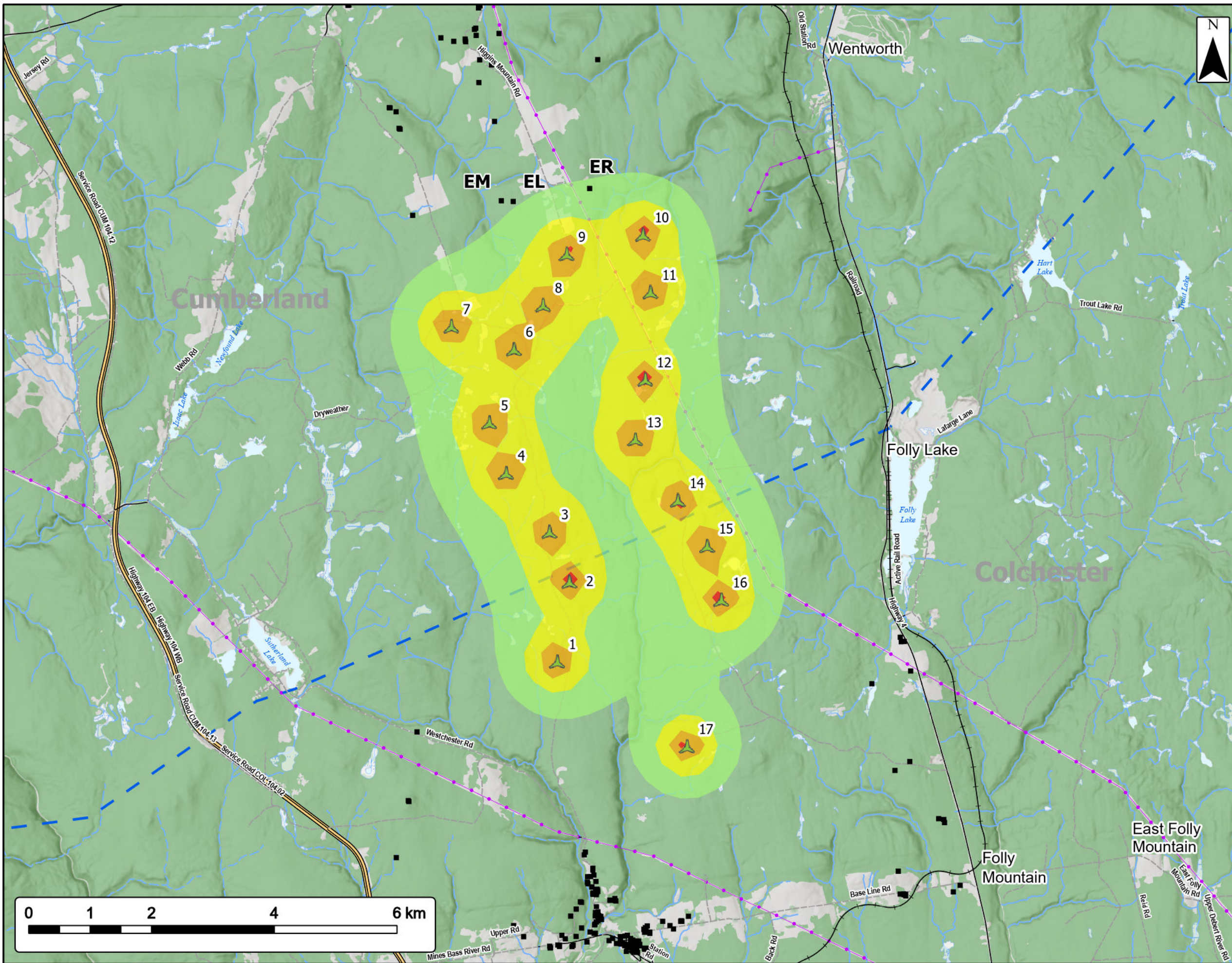
TECHNICAL INFORMATION

Visual Simulation Location:	Folly Lake
View Coordinates:	Latitude: 45° 31' 55.00" N Longitude: 63° 32' 30.00" W Easting: 457705.26 m Northing: 5042188.13 m
Distance to Nearest Turbine:	3.4 km
Direction of View:	West, Heading 270°
Camera Make/ Model:	Canon EOS REBEL T7
Lens:	33 mm
Image Resolution:	6000 x 4000
Weather Conditions:	Clear Sky
Date of Photo:	2021/09/20
Time of Photo:	10:46
Photo Credit:	Eric Johnson, Strum Consulting

**Higgins Mountain
 Wind Farm -
 Visual Simulation
 Folly Lake**



Date:	Project #:
March 2023	20-7376
Scale:	Drawing #:
1:200,000	10.2N
Drawn By:	
M. Savelle	
Checked By:	
M. Smith	



Higgins Mountain Wind Farm Project

Sound Model



Turbine Location

Predicted Sound level (dBA)

- 35-40
- 40-45
- 45-50
- 50+

Non Participating Receptors within 2km of Assessment Area

County Boundary

Utilities (line)

Existing Transmission Lines

Transportation

- Trans-Canada Highway
- Road
- Unpaved Road
- Railroad

Water Features

- Mapped Stream
- Mapped Indefinite Stream
- Mapped Wet Area
- Mapped Lakes and Rivers



Coordinate System: NAD83 UTM Zone 20N Sources: ESRI Basemaps, GeoNOVA, NSDT, HERE, Garmin, USGS, NRCAN

Date:	March 2023	Project #:	20-7376
Scale:	1:60,000	Drawing #:	10.3
Drawn By:	M. Savelle		
Checked By:	M. Smith		

