

# Higgins Mountain Wind Farm Project

## Overview of Communities



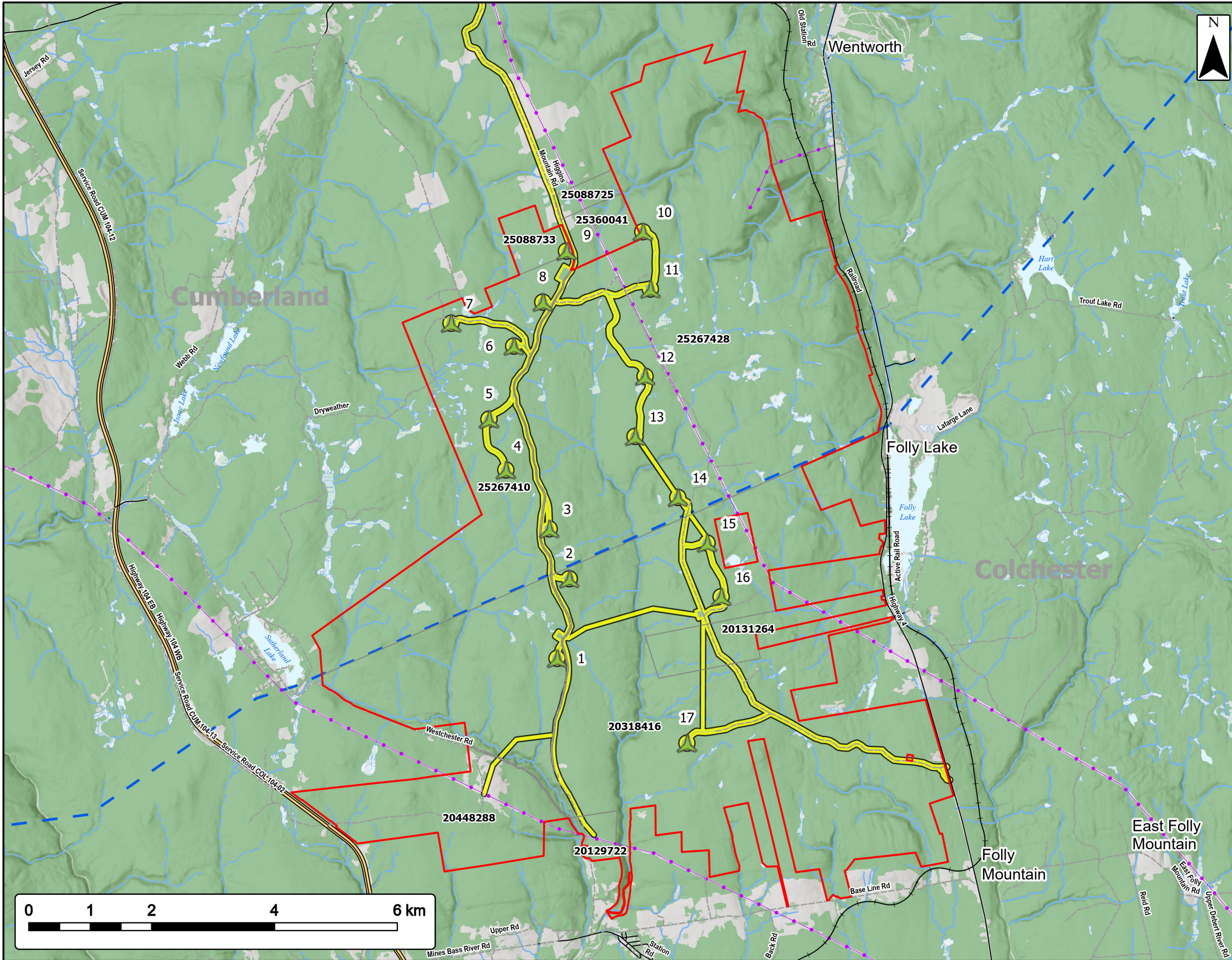
Study Area	
Assessment Area	
<b>Transportation</b>	
Trans-Canada Highway	
Road	
Unpaved Road	
<b>Utilities (line)</b>	
Existing Transmission Lines	
<b>Water Features</b>	
Mapped Stream	
Mapped Indefinite Stream	
Mapped Lakes and Rivers	
Mapped Wet Area	



Coordinate System: NAD83 UTM Zone 20N  
Sources: Esri Basemaps, GeoNOVA, SNSIS, NRCan, NSNRR, ACCDG, IBA Canada

Date:	Mar 2023	Project #:	20-7376
Scale:	1:100,000	Drawing #:	<b>2.1</b>
Drawn By:	P. Opra		
Checked By:	M. Savelle		





# Higgins Mountain Wind Farm Project

Site Overview



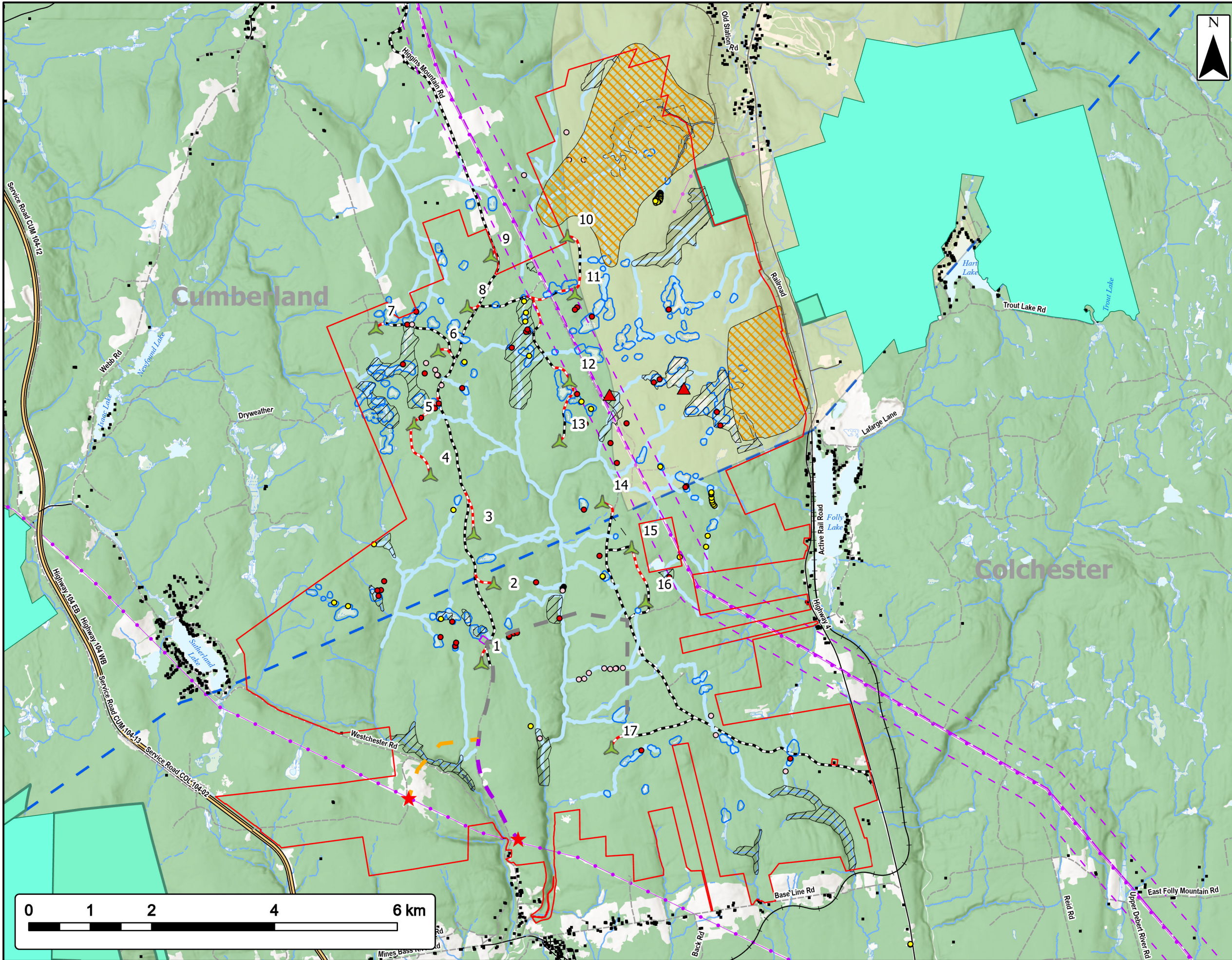
Turbine Location	
Study Area	
Assessment Area	
Property Line	
County Boundary	
<b>Utilities (line)</b>	
Existing Transmission Lines	
<b>Transportation</b>	
Trans-Canada Highway	
Road	
Unpaved Road	
Railroad	
<b>Water Features</b>	
Mapped Stream	
Mapped Indefinite Stream	
Mapped Wet Area	
Mapped Lakes and Rivers	



Coordinate System: NAD83 UTM Zone 20N Sources: ESRI Basemaps, GeoNOVA, NSTD, HERE, Garmin, USGS, NRCAN

Date:	March 2023	Project #:	20-7376
Scale:	1:60,000	Drawing #:	<b>2.2</b>
Drawn By:	M. Savelle		
Checked By:	M. Smith		





# Higgins Mountain Wind Farm Project Constraints



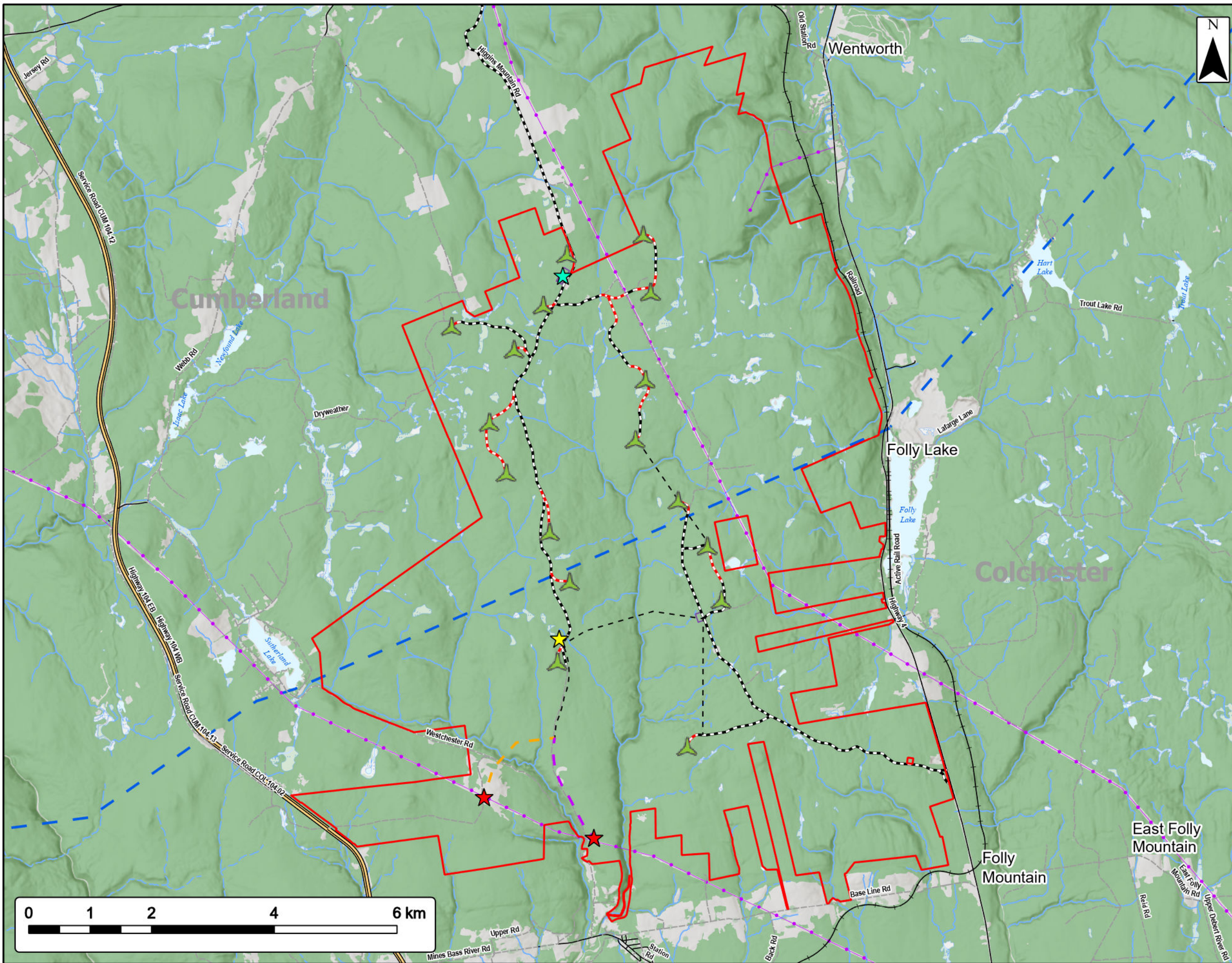
Significant Species & Habitats	
Turbine Location	Talus Slopes
Study Area	Watercourse Setback (30 m)
Building (point)	Wetland Setback (30 m)
Proposed New Roads	Cumberland County 3.2 km Highway 4 Restricted Area
Existing Roads to be Upgraded	Powerline Setback
Interconnection Point	County Boundary
Proposed Substation	Utilities (line)
Collector Line	Existing Transmission Lines
Interconnection Route (Option A)	<b>Transportation</b>
Interconnection Route (Option B)	Trans-Canada Highway
Rare Lichen	Road
Rare Plants	Unpaved Road
Moose Observations (Strum)	Railroad
Moose Reserve (Northern Pulp)	<b>Water Features</b>
Species At Risk Observations (Northern Pulp)	Mapped Stream
<b>NS Proposed or Pending Protection</b>	Mapped Indefinite Stream
Wilderness Area	Mapped Wet Area
<b>NS Parks and Protected Areas</b>	Mapped Lakes and Rivers
Wilderness Area	



Coordinate System: NAD83 UTM Zone 20N  
Sources: ESRI Basemaps, GeoNOVA, NSTD, HERE, Garmin, USGS, NRCAN

Date:	March 2023	Project #:	20-7376
Scale:	1:60,000	Drawing #:	<b>3.1</b>
Drawn By:	M. Savelle		
Checked By:	M. Smith		





# Higgins Mountain Wind Farm Project

## Project Infrastructure



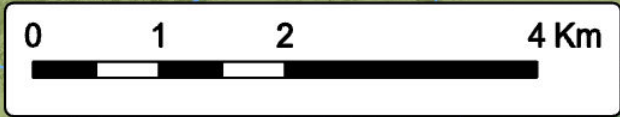
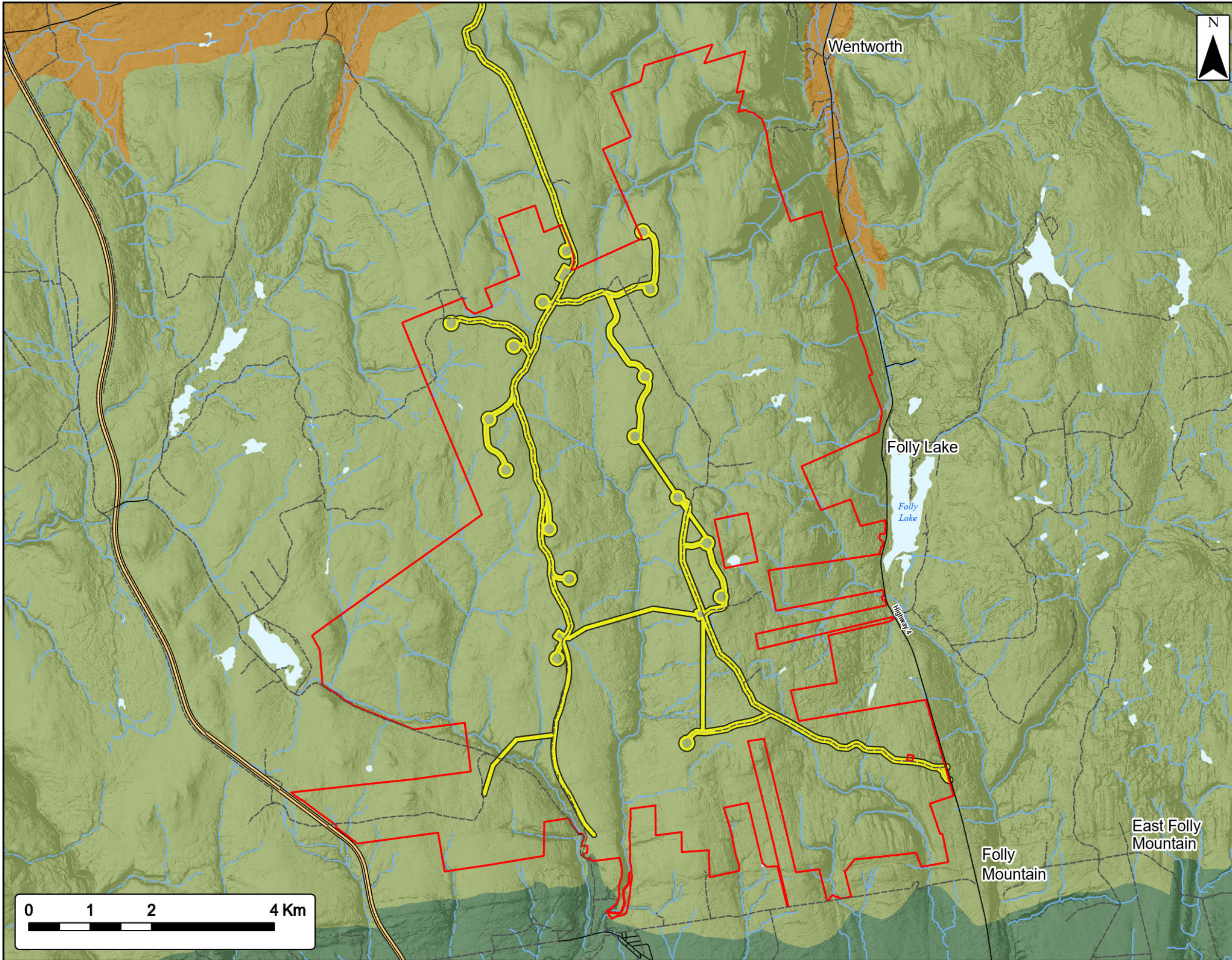
Turbine Location		County Boundary	
Study Area		Utilities (line)	
Project Infrastructure		Existing Transmission Lines	
Collector Line		Transportation	
Interconnection Route (Option A)		Trans-Canada Highway	
Interconnection Route (Option B)		Road	
Interconnection Point		Unpaved Road	
Proposed Substation		Railroad	
Proposed Laydown Area		Water Features	
Existing Roads to be Upgraded		Mapped Stream	
Proposed New Roads		Mapped Indefinite Stream	
		Mapped Wet Area	
		Mapped Lakes and Rivers	



Coordinate System: NAD83 UTM Zone 20N  
Sources: ESRI Basemaps, GeoNOVA, NSDT, HERE, Garmin, USGS, NRCAN

Date:	March 2023	Project #:	20-7376
Scale:	1:60,000	Drawing #:	<b>3.2</b>
Drawn By:	M. Savelle		
Checked By:	M. Smith		





# Higgins Mountain Wind Farm Project

## Ecodistricts



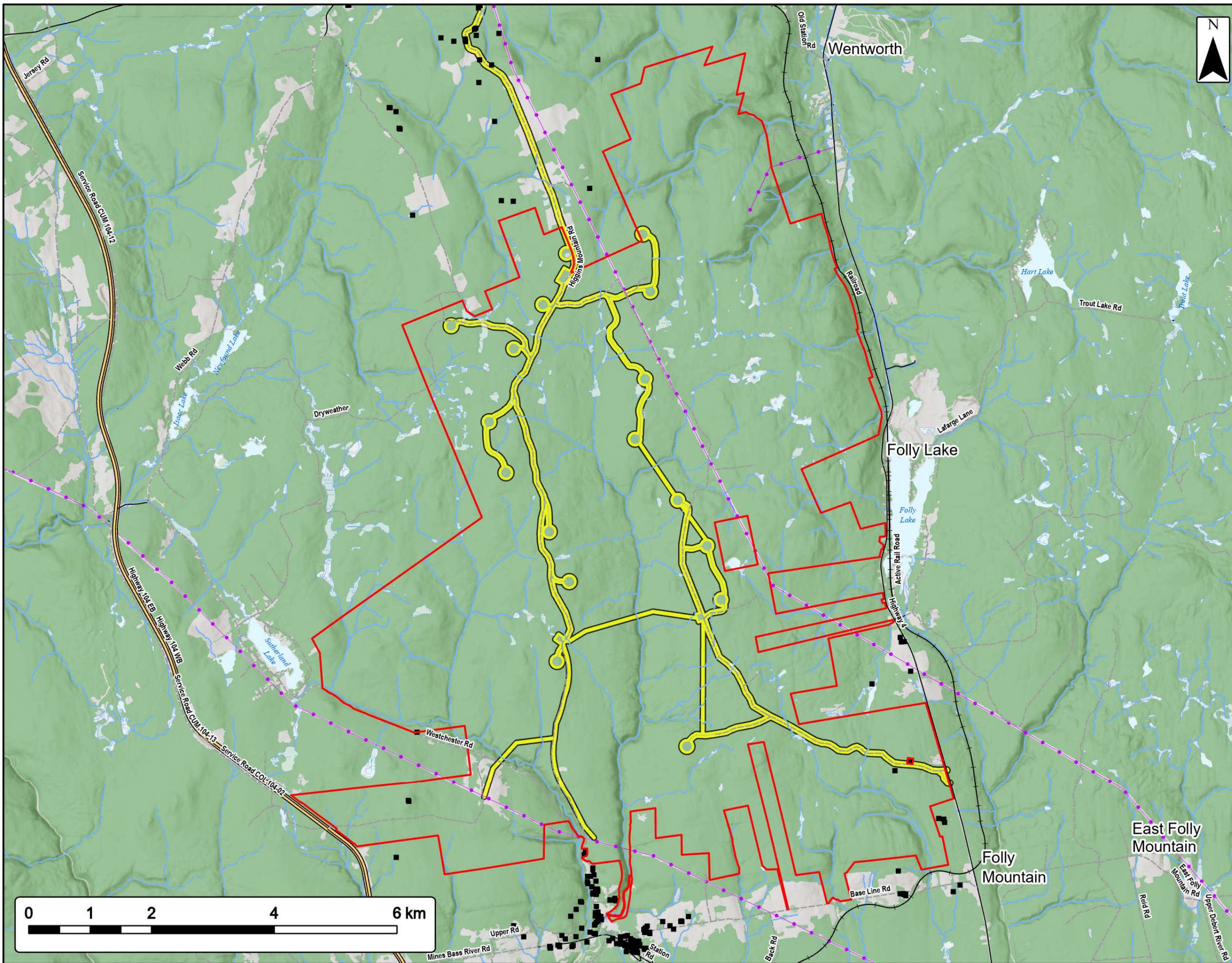
Study Area	
Assessment Area	
<b>Ecodistricts</b>	
Cobequid Hills	
Cobequid Slopes	
Cumberland Hills	
<b>Transportation</b>	
Trans-Canada Highway	
Road	
Unpaved Road	
<b>Water Features</b>	
Mapped Stream	
Mapped Indefinite Stream	
Mapped Lakes and Rivers	



Coordinate System: NAD83 UTM Zone 20N  
Sources: Esri Basemaps, GeoNOVA, SNSIS, NRCan, NSNRR, ACCDC, IBA Canada

Date:	Mar 2023	Project #:	20-7376
Scale:	1:60,000	Drawing #:	<b>7.1</b>
Drawn By:	P. Opra		
Checked By:	M. Savelle		





# Higgins Mountain Wind Farm Project

Receptors



Study Area	
Assessment Area	
Non Participating Receptors within 2km of Assessment Area	
<b>Utilities (line)</b>	
Existing Transmission Lines	
<b>Transportation</b>	
Trans-Canada Highway	
Road	
Unpaved Road	
Railroad	
<b>Water Features</b>	
Mapped Stream	
Mapped Indefinite Stream	
Mapped Wet Area	
Mapped Lakes and Rivers	



Coordinate System: NAD83 UTM Zone 20N Sources: ESRI Basemaps, GeoNOVA, NSTD, HERE, Garmin, USGS, NRCAN

Date:	March 2023	Project #:	20-7376
Scale:	1:60,000	Drawing #:	<b>7.2</b>
Drawn By:	M. Savelle		
Checked By:	M. Smith		

