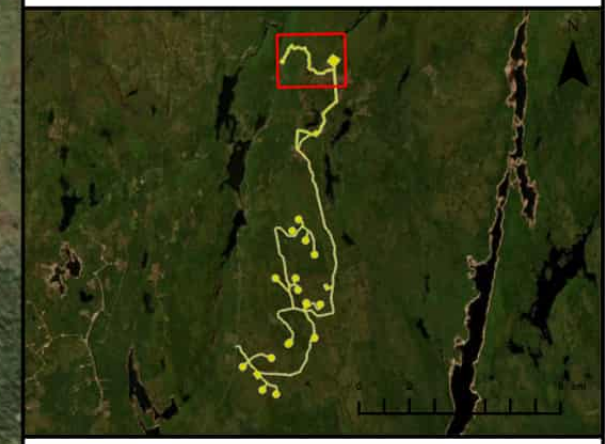


Bear Lake Wind Power Project

Field Assessments



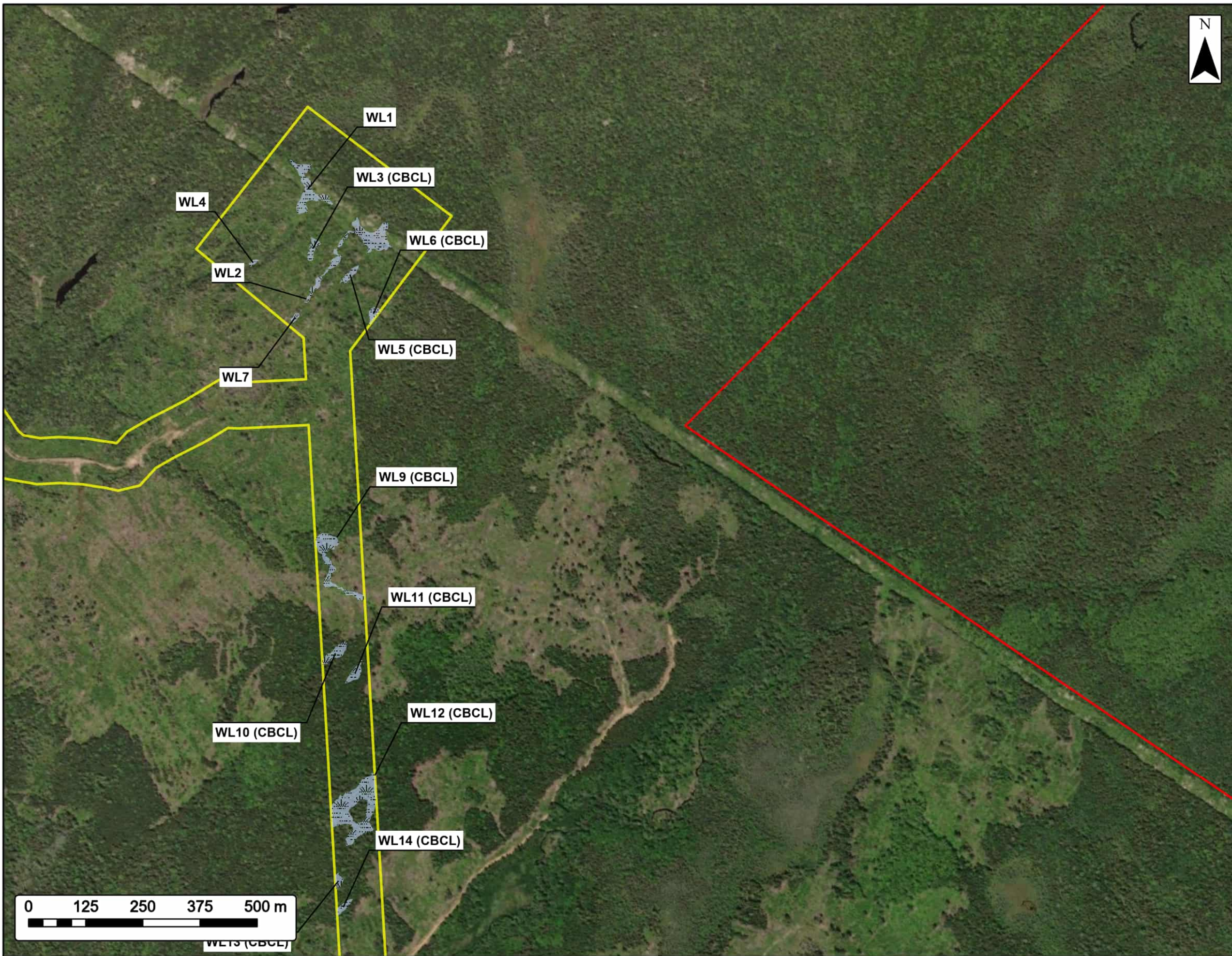
- Study Area
- Assessment Area
- Field Assessed Watercourse (WC)
- Field Assessed Wetland (WL)



Coordinate System: NAD83 UTM Zone 20N Sources: ESRI Basemaps, GeoNOVA, SNSIS, NRCan, NSNRR, ACCDC, IBA Canada

Date:	Oct 2023	Project #:	23-9128
Scale:	1:8,000	Drawing #:	7.11A
Drawn By:	K. Wallace		
Checked By:	M. Savelle		

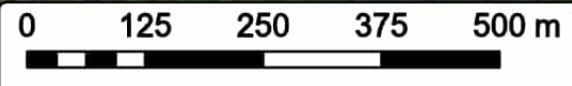
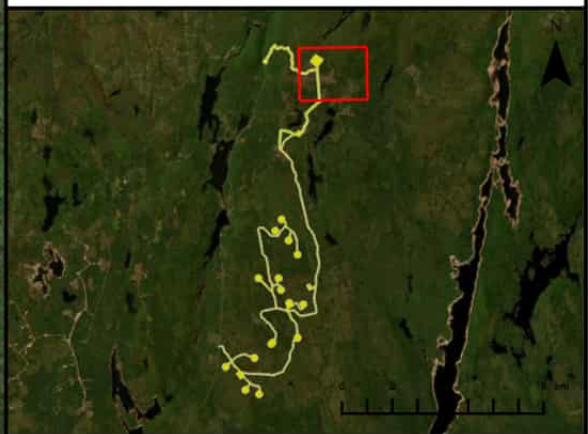




Bear Lake Wind Power Project
Field Assessments



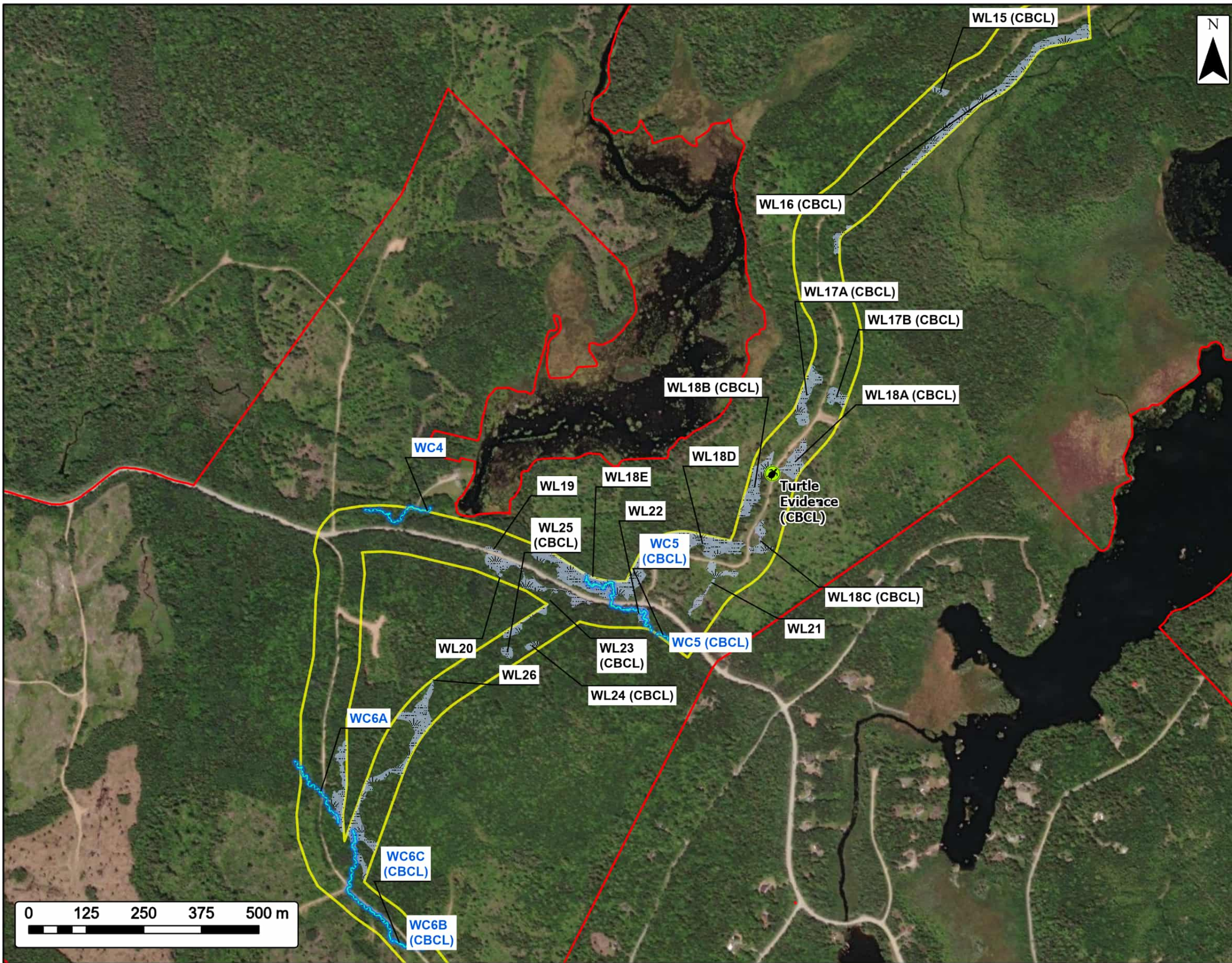
Study Area	
Assessment Area	
Field Assessed Wetland (WL)	



Coordinate System: NAD83 UTM Zone 20N Sources: ESRI Basemaps, GeoNOVA, SNSIS, NRCan, NSNRR, ACCDC, IBA Canada


Date:	Oct 2023	Project #:	23-9128
Scale:	1:8,000	Drawing #:	7.11B
Drawn By:	K. Wallace		
Checked By:	M. Savelle		








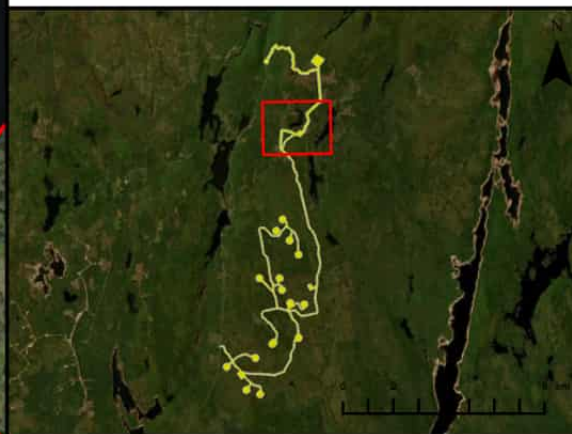


Bear Lake Wind Power Project


Field Assessments

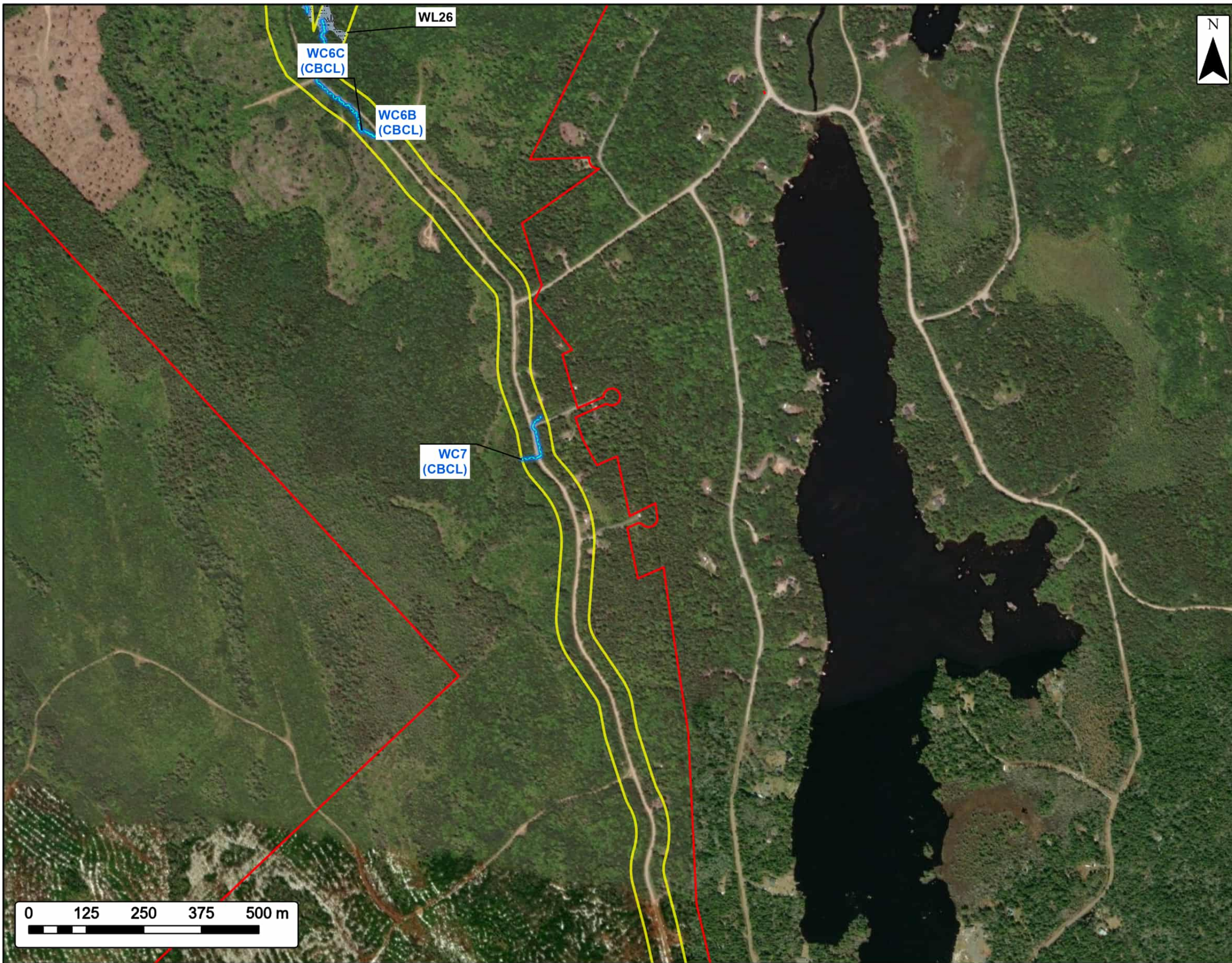


Study Area	
Assessment Area	
Turtle Evidence (CBCL)	
Field Assessed Watercourse (WC)	
Field Assessed Wetland (WL)	



Coordinate System: NAD83 UTM Zone 20N		Sources: ESRI Basemaps, GeoNOVA, SNSIS, NRCan, NSNRR, ACCDC, IBA Canada	
Date:	Oct 2023	Project #:	23-9128
Scale:	1:8,000	Drawing #:	7.11C
Drawn By:	K. Wallace		
Checked By:	M. Savelle		

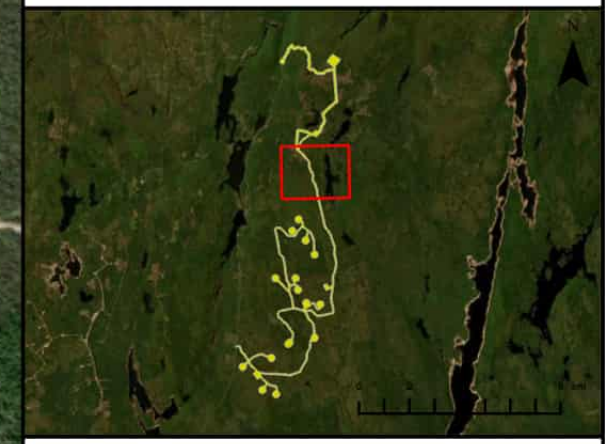




Bear Lake Wind Power Project
Field Assessments



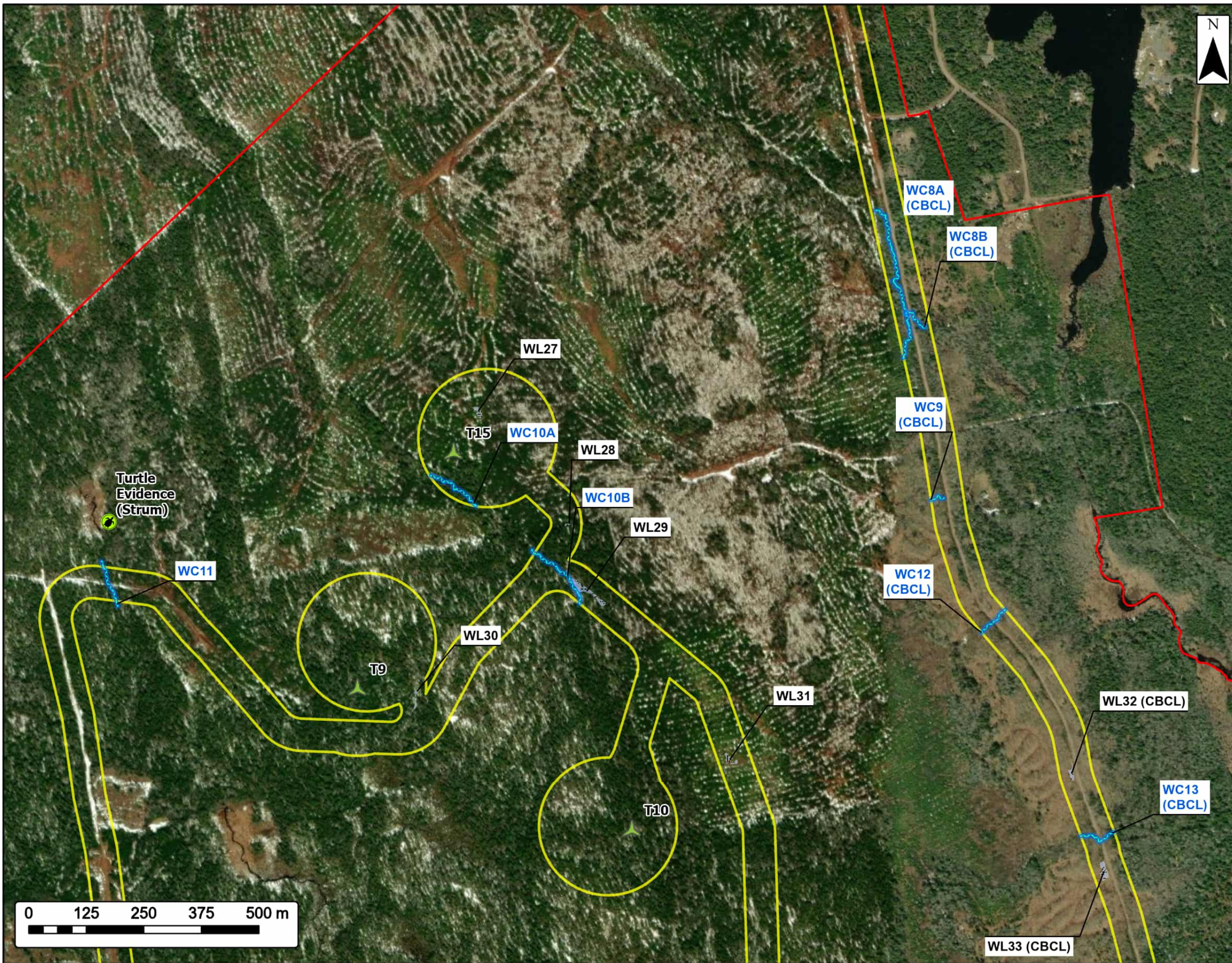
- Study Area
- Assessment Area
- Field Assessed Watercourse (WC)
- Field Assessed Wetland (WL)



Coordinate System: NAD83 UTM Zone 20N Sources: ESRI Basemaps, GeoNOVA, SNSIS, NRCan, NSNRR, ACCDC, IBA Canada

Date: Oct 2023	Project #: 23-9128
Scale: 1:8,000	Drawing #:
Drawn By: K. Wallace	7.11D
Checked By: M. Savelle	



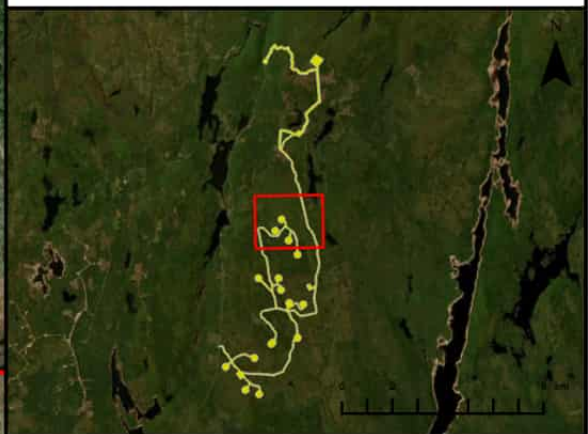


Bear Lake Wind Power Project

Field Assessments



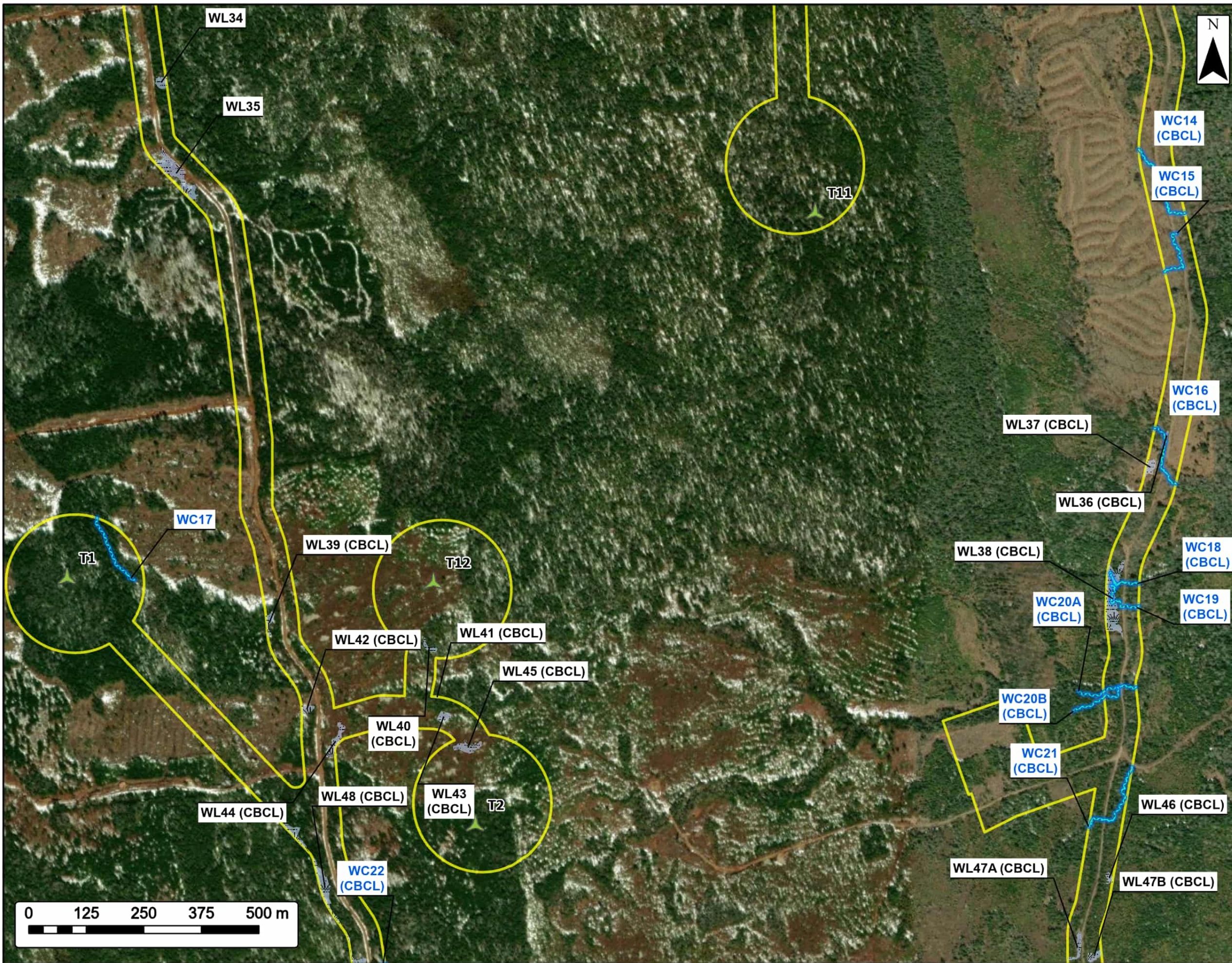
- Study Area
- Assessment Area
- Proposed Turbine Location
- Turtle Evidence
- Field Assessed Watercourse (WC)
- Field Assessed Wetland (WL)



Coordinate System: NAD83 UTM Zone 20N Sources: ESRI BaseMaps, GeoNOVA, SNSIS, NRCan, NSNRR, ACCDC, IBA Canada

Date: Oct 2023	Project #: 23-9128
Scale: 1:8,000	Drawing #: 7.11E
Drawn By: K. Wallace	
Checked By: M. Savelle	



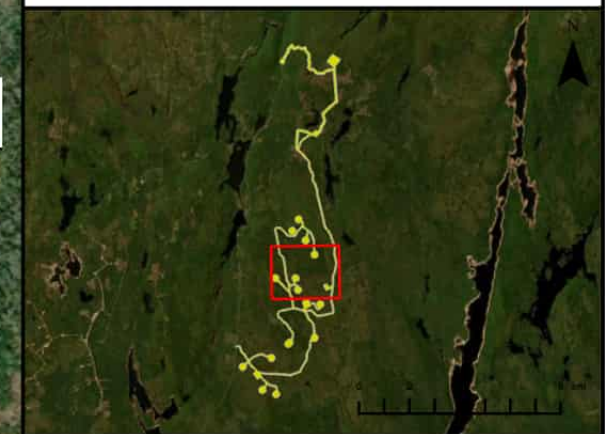


Bear Lake Wind Power Project

Field Assessments



- Study Area
- Assessment Area
- Proposed Turbine Location
- Field Assessed Watercourse (WC)
- Field Assessed Wetland (WL)



Coordinate System: NAD83 UTM Zone 20N Sources: ESRI Basemaps, GeoNOVA, SNSIS, NRCan, NSNRR, ACCDC, IBA Canada

Date:	Oct 2023	Project #:	23-9128
Scale:	1:8,000	Drawing #:	7.11F
Drawn By:	K. Wallace		
Checked By:	M. Savelle		



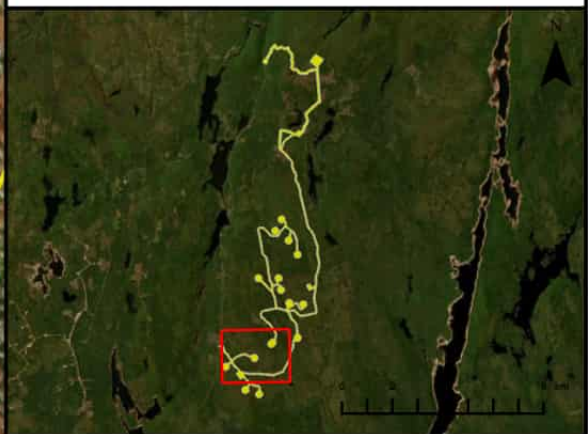


Bear Lake Wind Power Project

Field Assessments



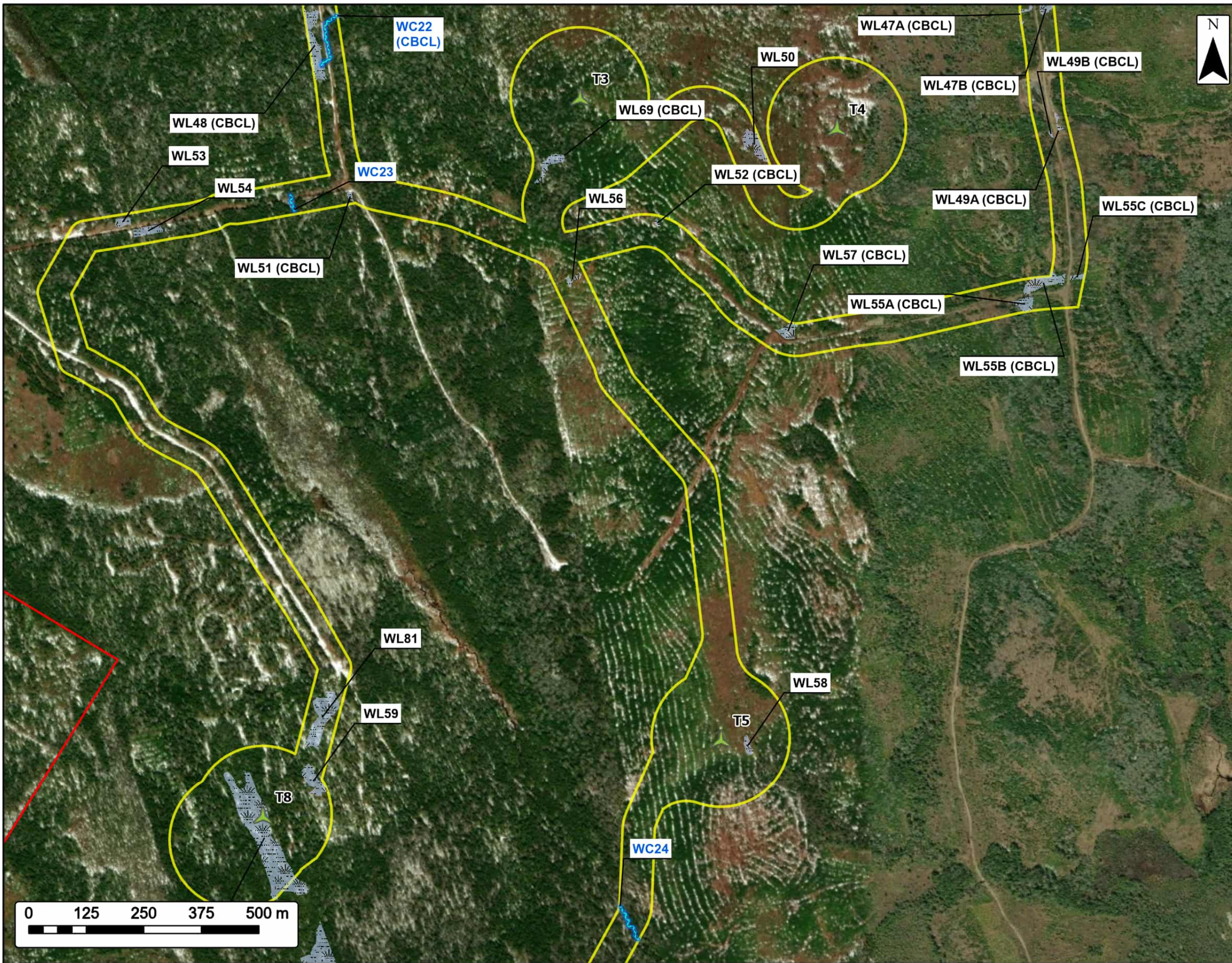
- Study Area
- Assessment Area
- Proposed Turbine Location
- Field Assessed Watercourse (WC)
- Field Assessed Wetland (WL)



Coordinate System: NAD83 UTM Zone 20N Sources: ESRI Basemaps, GeoNOVA, SNSIS, NRCan, NSNRR, ACCDC, IBA Canada

Date:	Oct 2023	Project #:	23-9128
Scale:	1:8,000	Drawing #:	7.11G
Drawn By:	K. Wallace		
Checked By:	M. Savelle		



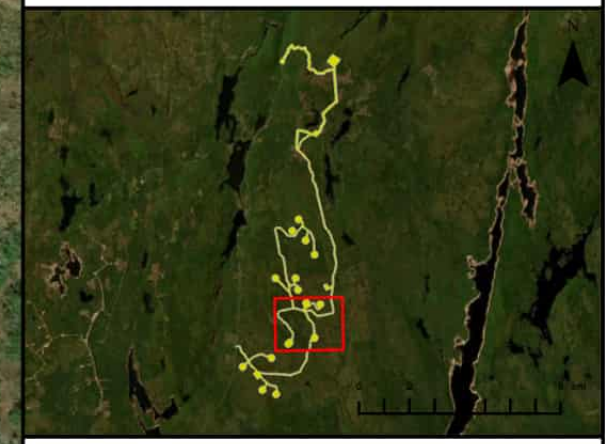


Bear Lake Wind Power Project

Field Assessments



Study Area	
Assessment Area	
Proposed Turbine Location	
Field Assessed Watercourse (WC)	
Field Assessed Wetland (WL)	



Coordinate System: NAD83 UTM Zone 20N Sources: ESRI BaseMaps, GeoNOVA, SNSIS, NRCan, NSNRR, ACCDC, IBA Canada

Date:	Oct 2023	Project #:	23-9128
Scale:	1:8,000	Drawing #:	7.11H
Drawn By:	K. Wallace		
Checked By:	M. Savelle		



