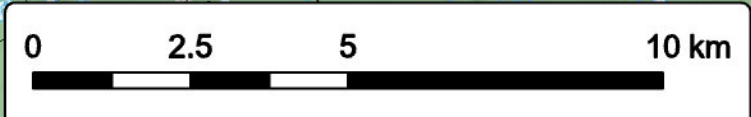


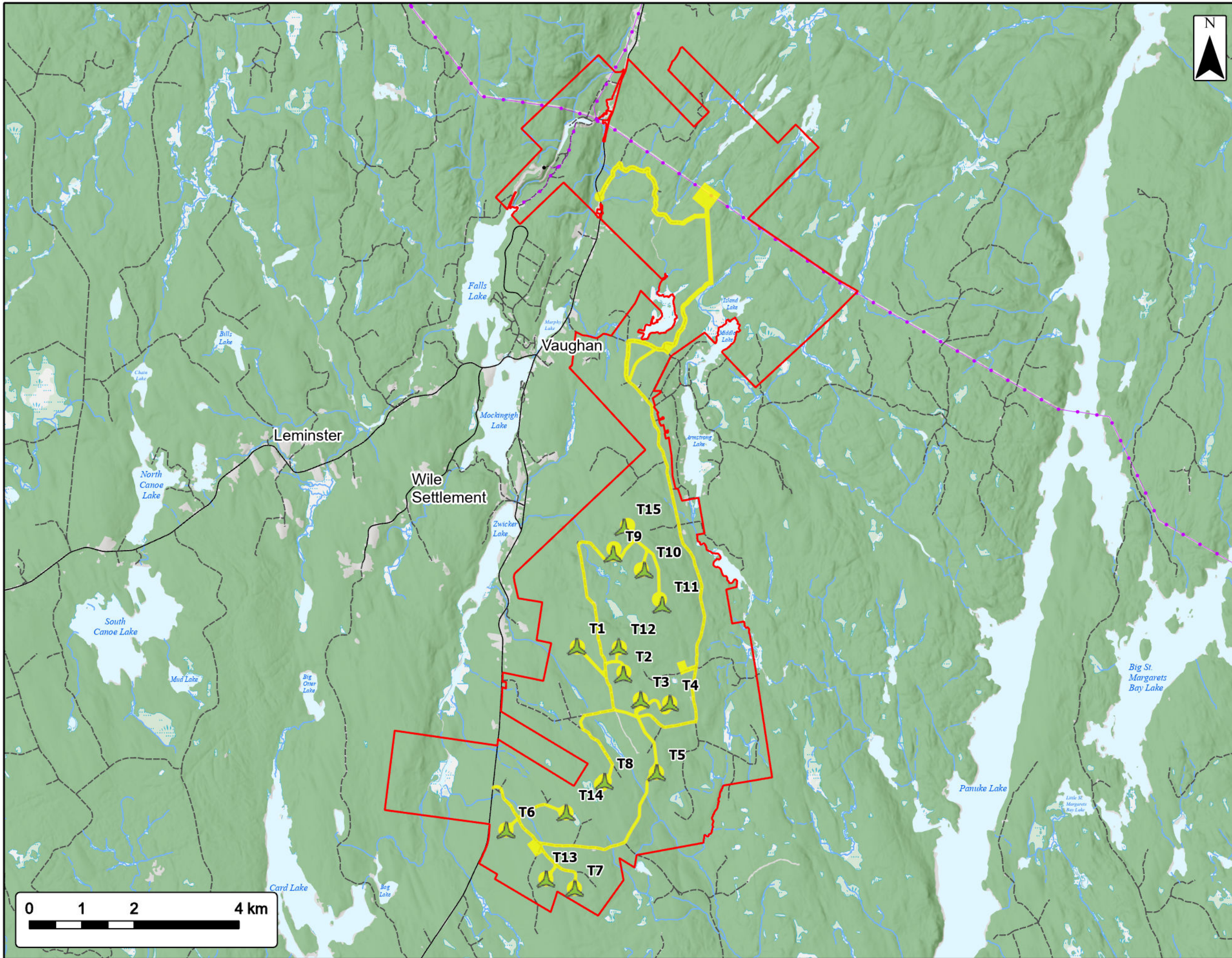
## Bear Lake Wind Power Project

Communities

Study Area	
Assessment Area	
<b>Utilities (line)</b>	
Existing Pipeline	
Existing Transmission Lines	
<b>Transportation</b>	
Highway	
Road	
Unpaved Road	
<b>Water Features</b>	
Mapped Stream	
Mapped Indefinite Stream	
Mapped Lakes and Rivers	
Mapped Wet Area	

Coordinate System: NAD83 UTM Zone 20N		Sources: Esri Basemaps, GeoNOVA, SNSIS, NRCan, NSNRR, ACCDC, IBA Canada	
Date:	Oct 2023	Project #:	23-9128
Scale:	1:120,000	Drawing #:	2.1
Drawn By:	K. Wallace		
Checked By:	M. Savelle		










## Bear Lake Wind Power Project

Site Overview



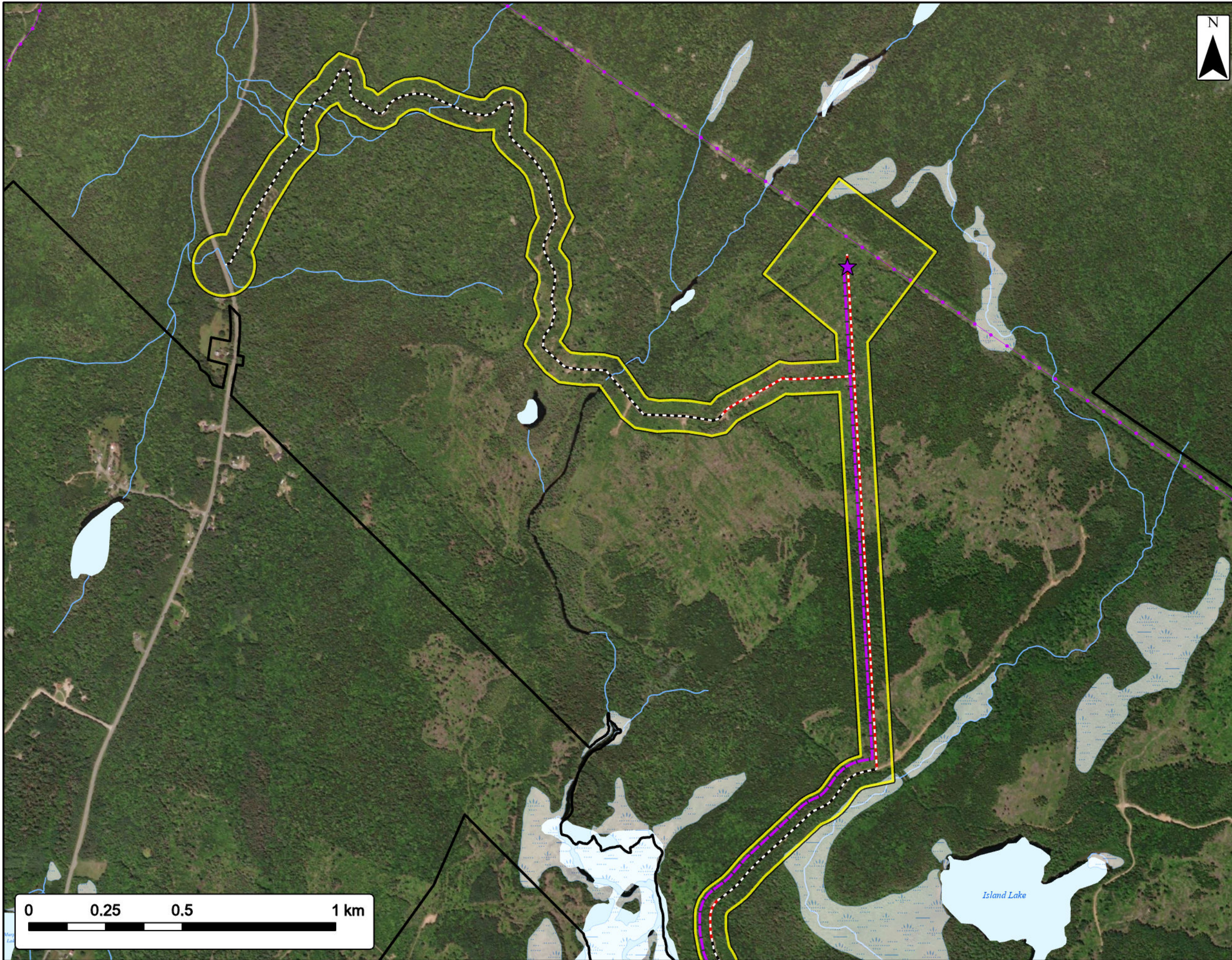
Study Area	
Assessment Area	
Proposed Turbine Location	
<b>Utilities (line)</b>	
Existing Pipeline	
Existing Transmission Lines	
<b>Transportation</b>	
Road	
Unpaved Road	
<b>Water Features</b>	
Mapped Stream	
Mapped Indefinite Stream	
Mapped Lakes and Rivers	
Mapped Wet Area	



0 50 100 200 km

Coordinate System: NAD83 UTM Zone 20N		Sources: ESRI Basemaps, GeoNOVA, SNSIS, NRCan, NSNRR, ACCDC, IBA Canada	
Date:	Oct 2023	Project #:	23-9128
Scale:	1:70,000	Drawing #:	2.2
Drawn By:	K. Wallace		
Checked By:	M. Savelle		



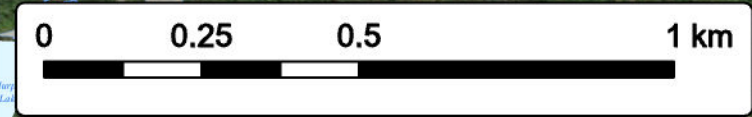
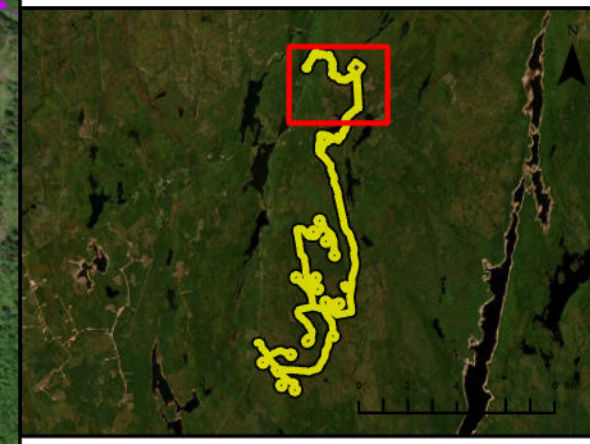


# Bear Lake Wind Power Project

Infrastructure



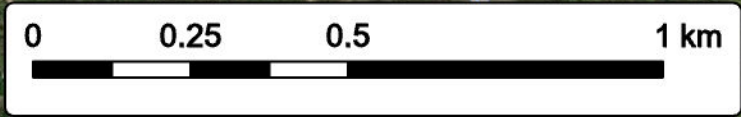
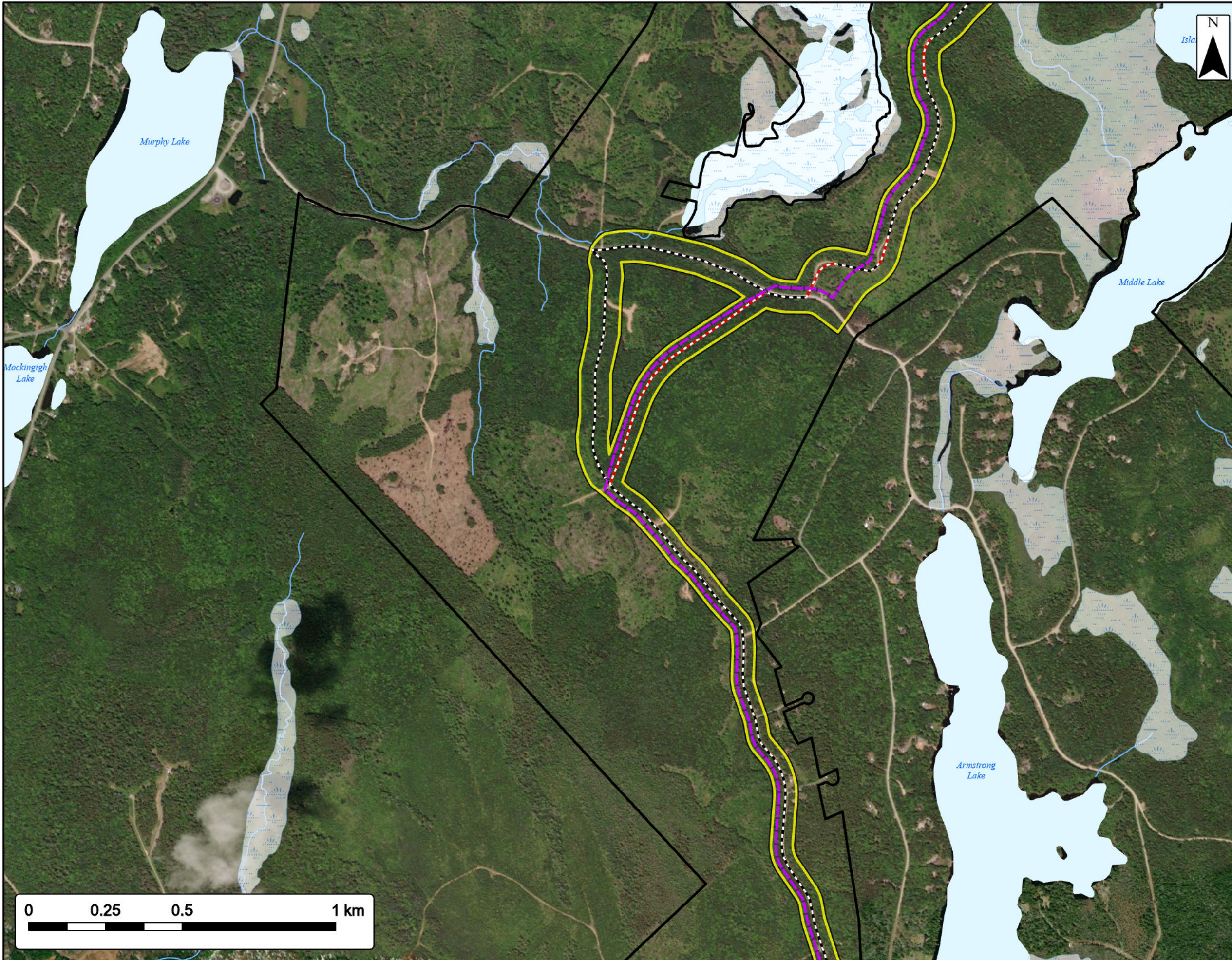
Study Area	
Assessment Area	
Switching Station	
Transmission Route	
Existing Road to be Upgraded	
Proposed New Road	
County Boundary	
<b>Utilities (line)</b>	
Existing Transmission Lines	
<b>Water Features</b>	
Mapped Stream	
Mapped Lakes and Rivers	
Mapped Wet Area	



Coordinate System: NAD83 UTM Zone 20N  
Sources: Esri Basemaps, GeoNOVA, SNSIS, NRCan, NSNRR, ACCDC, IBA Canada

Date:	Oct 2023	Project #:	23-9128
Scale:	1:12,000	Drawing #:	<b>3.1A</b>
Drawn By:	K. Wallace		
Checked By:	M. Savelle		



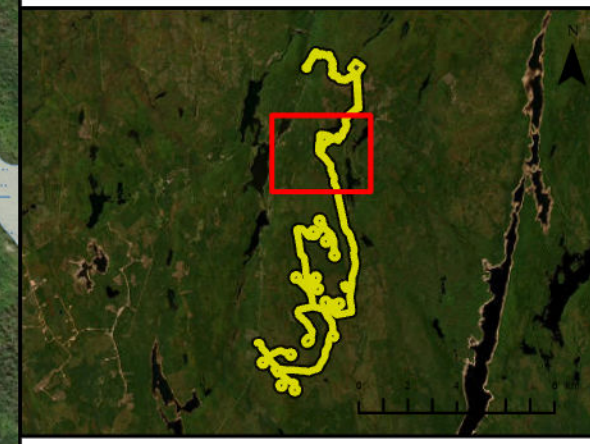


# Bear Lake Wind Power Project

## Infrastructure



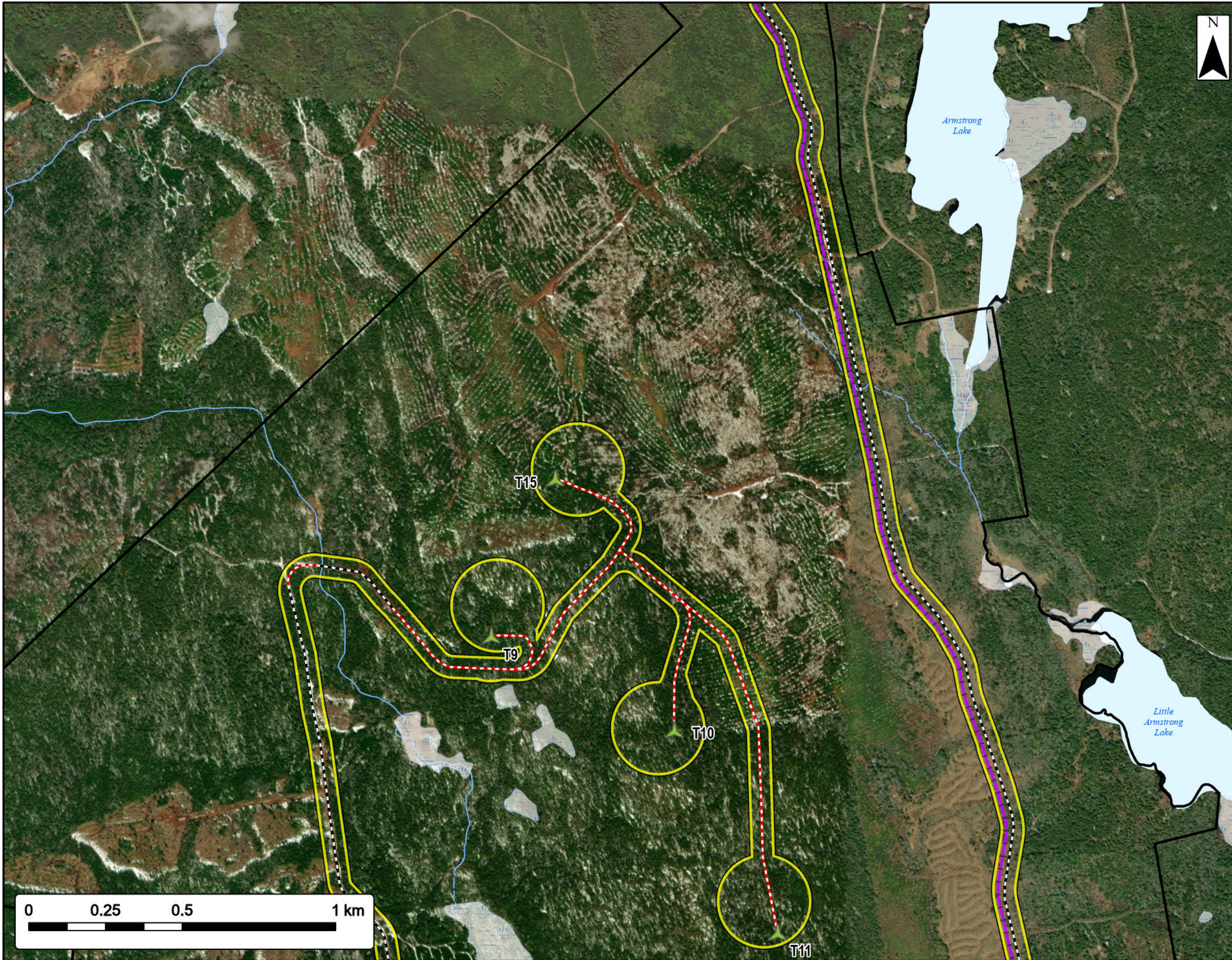
Study Area	
Assessment Area	
Transmission Route	
Existing Road to be Upgraded	
Proposed New Road	
County Boundary	
<b>Water Features</b>	
Mapped Stream	
Mapped Lakes and Rivers	
Mapped Wet Area	



Coordinate System: NAD83 UTM Zone 20N  
 Sources: Esri Basemaps, GeoNOVA, SNSIS, NRCan, NSNRR, ACCDC, IBA Canada

Date:	Oct 2023	Project #:	23-9128
Scale:	1:12,000	Drawing #:	<b>3.1B</b>
Drawn By:	K. Wallace		
Checked By:	M. Savelle		



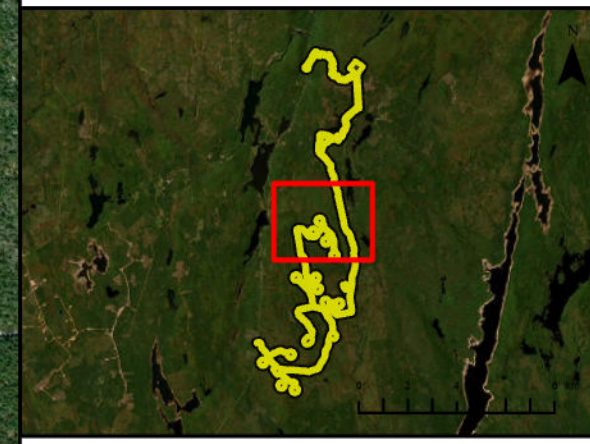


# Bear Lake Wind Power Project

## Infrastructure

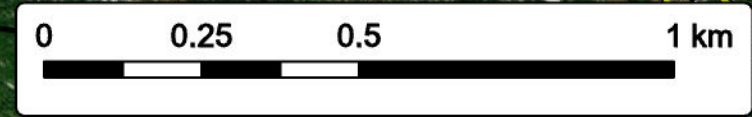


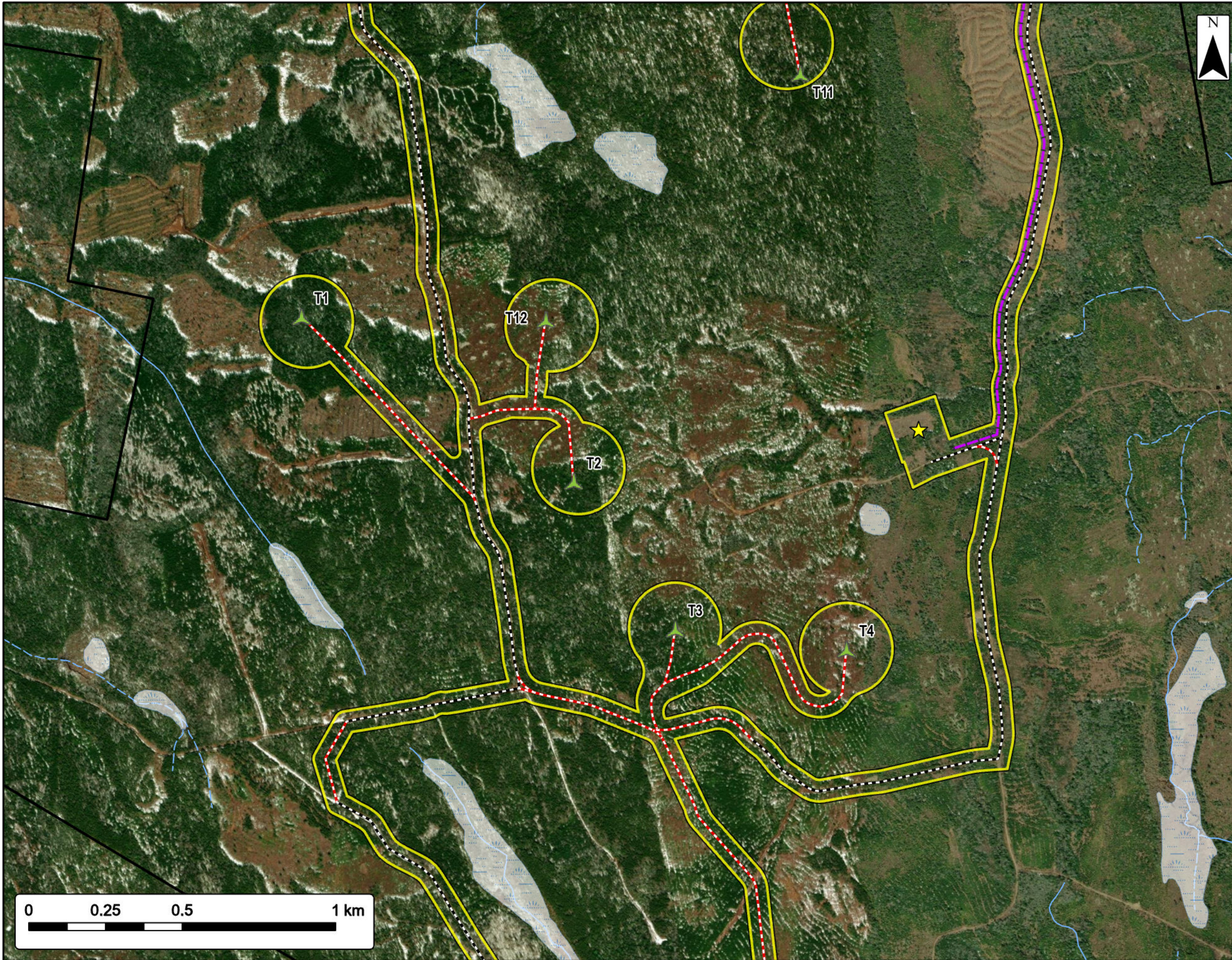
Study Area	
Assessment Area	
Proposed Turbine Location	
Transmission Route	
Existing Road to be Upgraded	
Proposed New Road	
County Boundary	
<b>Water Features</b>	
Mapped Stream	
Mapped Indefinite Stream	
Mapped Lakes and Rivers	
Mapped Wet Area	



Coordinate System: NAD83 UTM Zone 20N  
 Sources: Esri Basemaps, GeoNOVA, SNSIS, NRCan, NSNRR, ACCDC, IBA Canada

Date:	Oct 2023	Project #:	23-9128
Scale:	1:12,000	Drawing #:	<b>3.1C</b>
Drawn By:	K. Wallace		
Checked By:	M. Savelle		



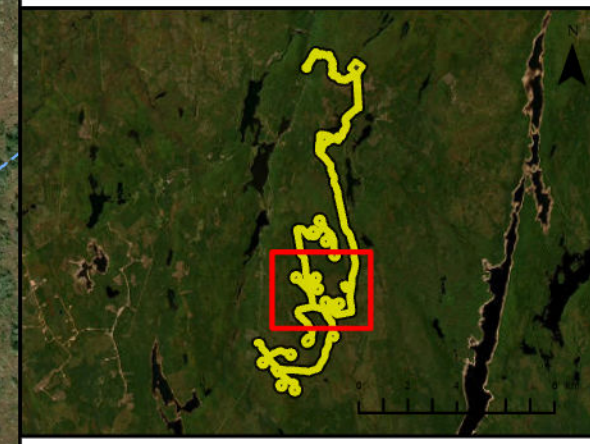


# Bear Lake Wind Power Project

Infrastructure



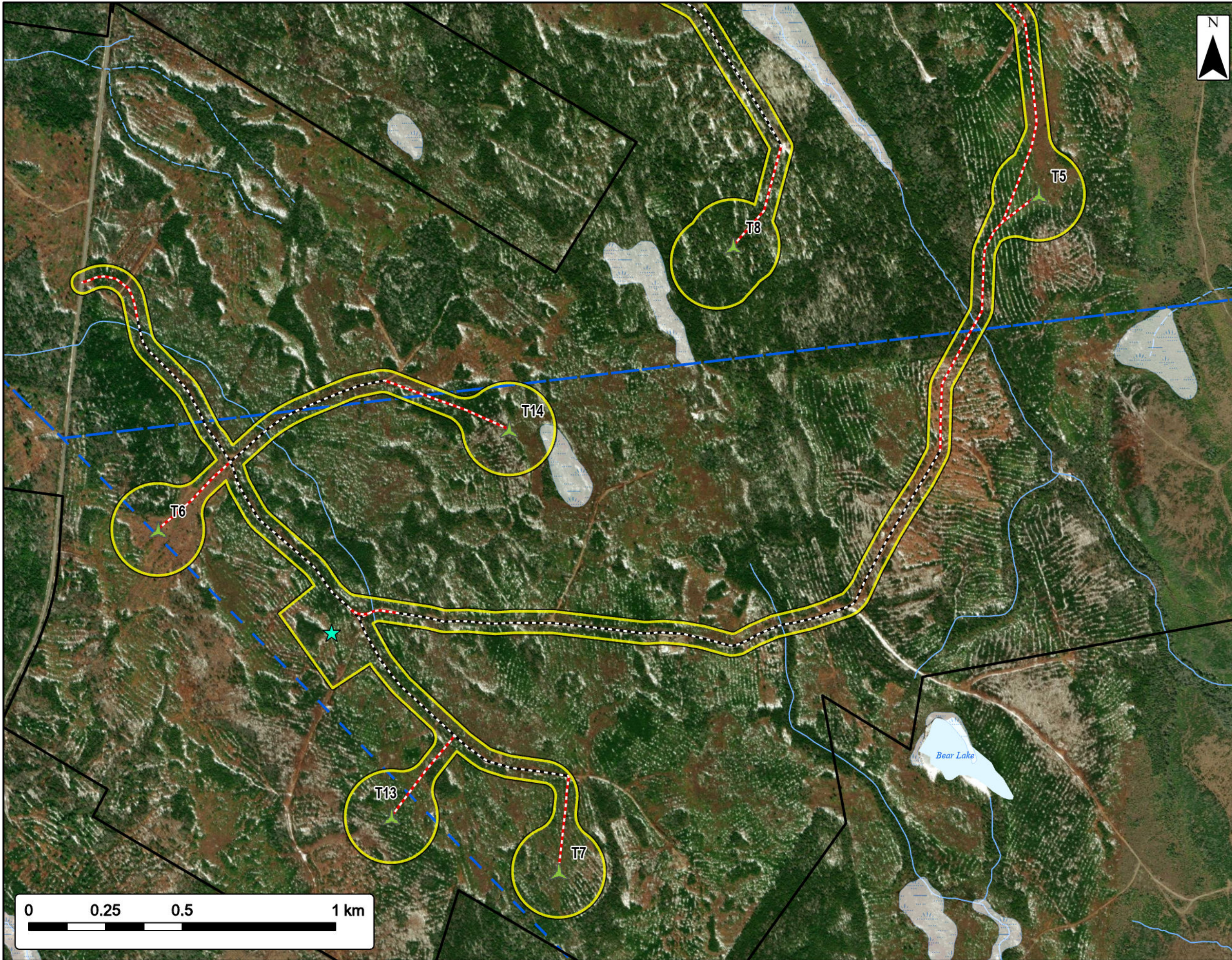
Study Area	
Assessment Area	
Substation	
Proposed Turbine Location	
Transmission Route	
Existing Road to be Upgraded	
Proposed New Road	
County Boundary	
<b>Water Features</b>	
Mapped Stream	
Mapped Indefinite Stream	
Mapped Wet Area	



Coordinate System: NAD83 UTM Zone 20N  
 Sources: Esri Basemaps, GeoNOVA, SNSIS, NRCan, NSNRR, ACCDC, IBA Canada

Date:	Oct 2023	Project #:	23-9128
Scale:	1:12,000	Drawing #:	<b>3.1D</b>
Drawn By:	K. Wallace		
Checked By:	M. Savelle		



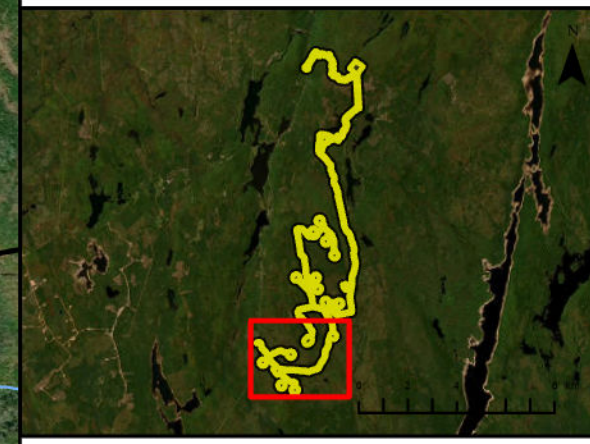


# Bear Lake Wind Power Project

Infrastructure

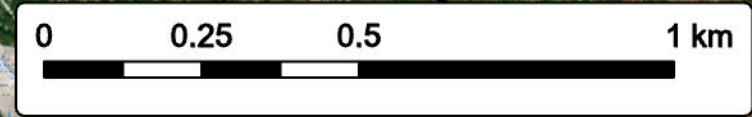


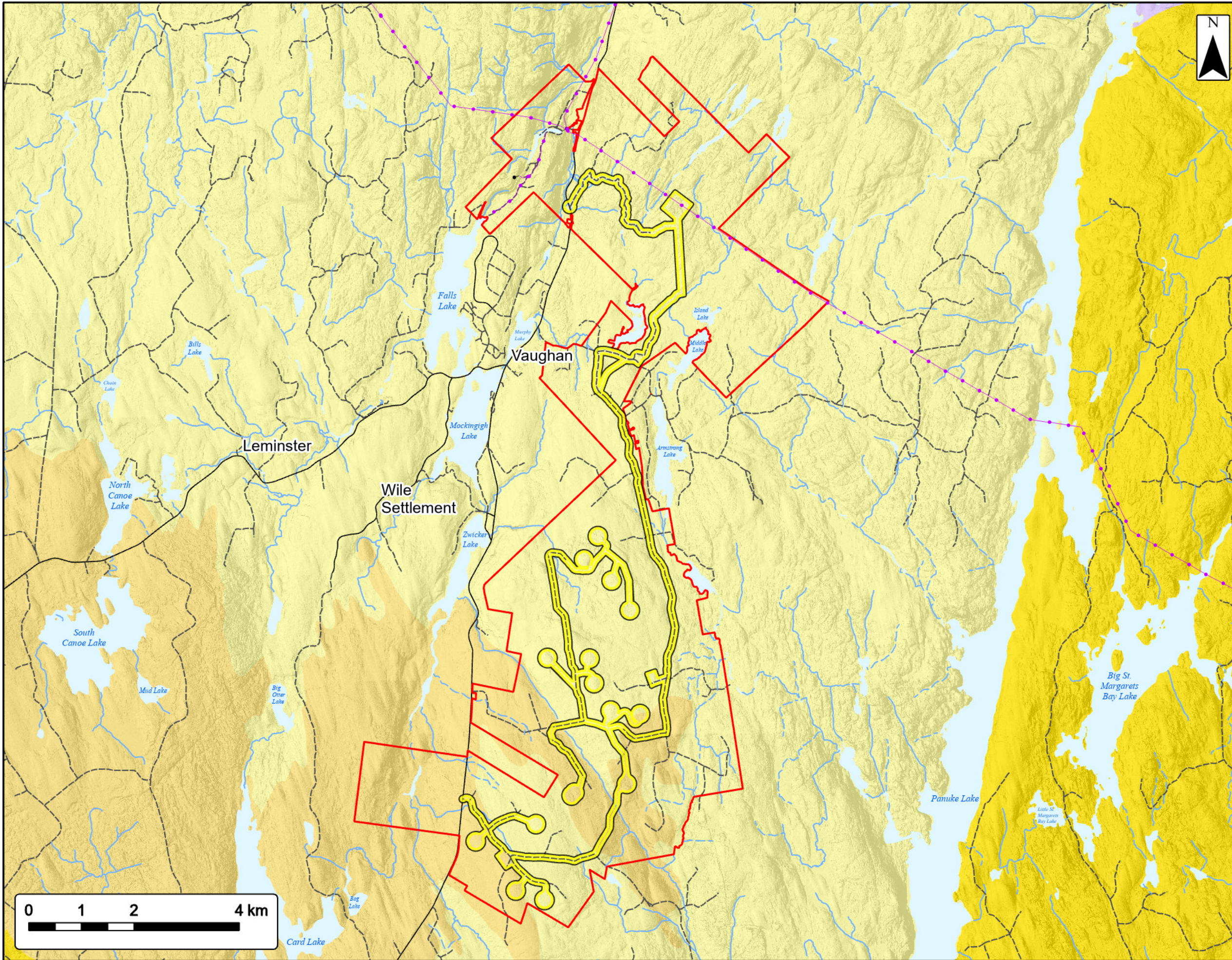
Study Area	
Assessment Area	
Laydown Area	
Proposed Turbine Location	
Existing Road to be Upgraded	
Proposed New Road	
County Boundary	
<b>Water Features</b>	
Mapped Stream	
Mapped Indefinite Stream	
Mapped Lakes and Rivers	
Mapped Wet Area	



Coordinate System: NAD83 UTM Zone 20N  
Sources: Esri Basemaps, GeoNOVA, SNSIS, NRCan, NSNRR, ACCDC, IBA Canada

Date:	Oct 2023	Project #:	23-9128
Scale:	1:12,000	Drawing #:	<b>3.1E</b>
Drawn By:	K. Wallace		
Checked By:	M. Savelle		





# Bear Lake Wind Power Project

## Ecodistricts



Study Area	
Assessment Area	
<b>Ecodistricts</b>	
Rawdon \ Wittenburg Hills	
South Mountain	
Lahave Drumlins	
St. Margaret's Bay	
<b>Utilities (line)</b>	
Existing Pipeline	
Existing Transmission Lines	
<b>Transportation</b>	
Road	
Unpaved Road	
<b>Water Features</b>	
Mapped Stream	
Mapped Indefinite Stream	
Mapped Lakes and Rivers	

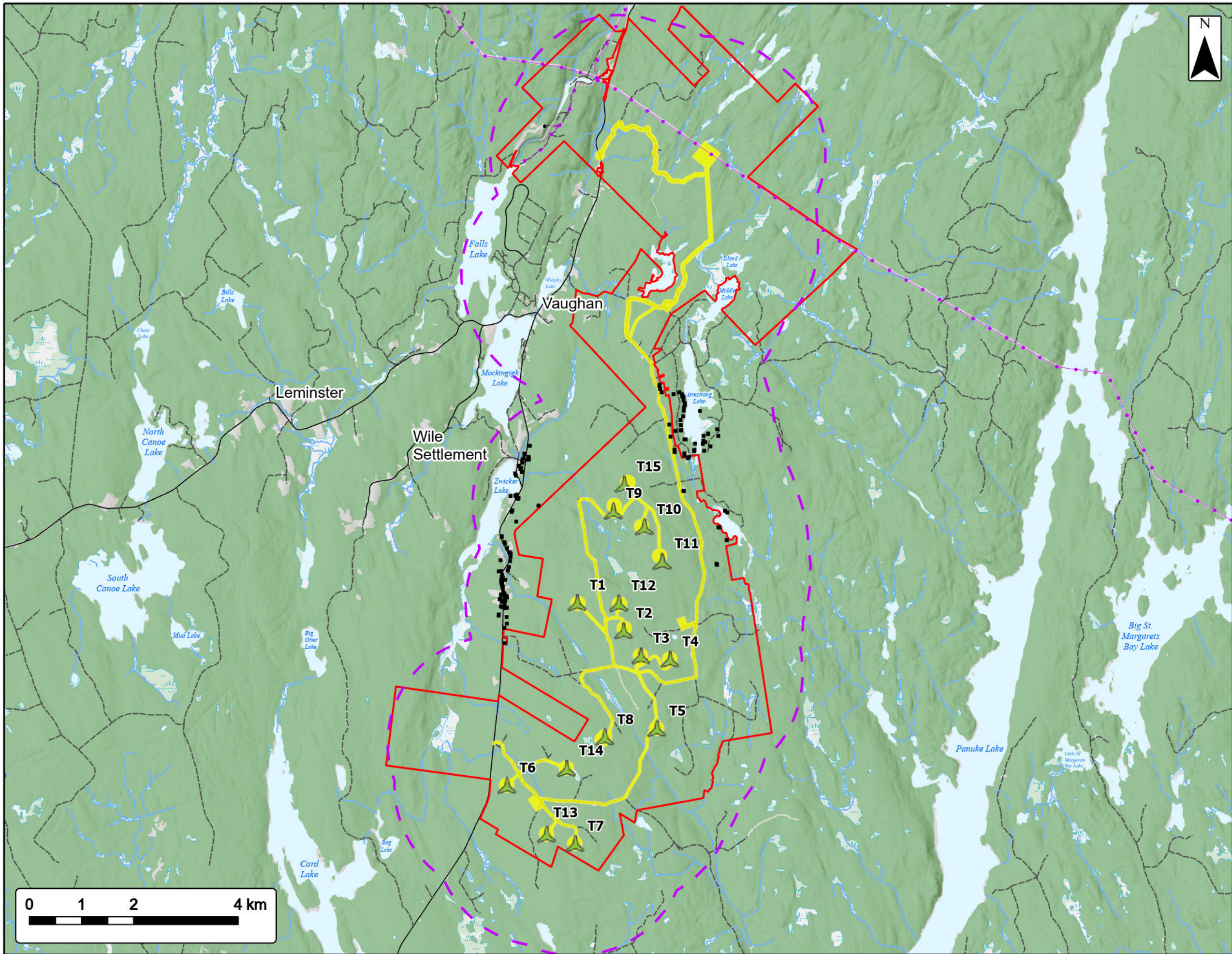


Coordinate System: NAD83 UTM Zone 20N Sources: Esri Basemaps, GeoNOVA, SNSIS, NRCan, NSNRR, ACCDC, IBA Canada

Date:	Oct 2023	Project #:	23-9128
Scale:	1:70,000	Drawing #:	<b>7.1</b>
Drawn By:	K. Wallace		
Checked By:	M. Savelle		







## Bear Lake Wind Power Project

*Receptors*

Study Area	
Assessment Area	
2 km Assessment Area Buffer	
Proposed Turbine Location	
Non Participating Buildings within 2km of Assessment Area	
<b>Utilities (line)</b>	
Existing Pipeline	
Existing Transmission Lines	
<b>Transportation</b>	
Road	
Unpaved Road	
<b>Water Features</b>	
Mapped Stream	
Mapped Indefinite Stream	
Mapped Lakes and Rivers	
Mapped Wet Area	

Coordinate System: NAD83 UTM Zone 23N		Sources: ESRI Basemaps, GeoNOVA, SNSIS, NRCAN, NSNRR, ACCDC, IBA Canada	
Date:	Oct 2023	Project #:	23-9128
Scale:	1:70,000	Drawing #:	<b>7.2</b>
Drawn By:	K. Wallace		
Checked By:	M. Savelle		