

- Assessment Area (Phase 4)
- Preliminary Assessment Area
- Quaternary Watersheds
- Possible Fish Bearing Watercourse (CBCL 2022)
- Non-Fish Habitat Watercourse (CBCL 2022)
- Predicted Water Flow Path (CBCL 2022)
- Provincially Mapped Watercourse
- Assessed Watercourses (CBCL 2022)**
- Small Permanent
- Small Permanent with Intermittent Characteristics
- Intermittent
- Intermittent with Ephemeral Characteristics
- Ephemeral with Intermittent Characteristics
- Ephemeral



**NSPI NEW WIND
BEAR LAKE**

**Watercourse Classification
and Field Results**

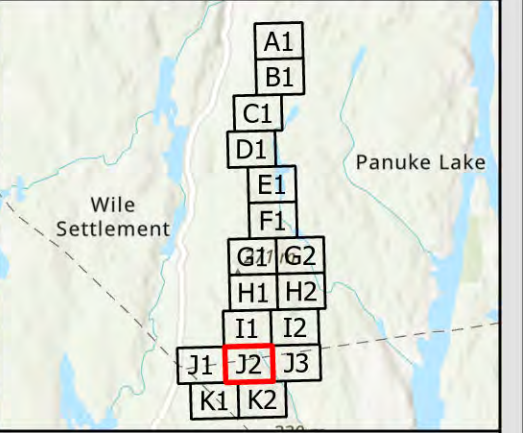
DATE: 2023-04-03	PROJ N°: 221266.01	FIGURE: 2-J1
DRAWN BY: NH	CHECKED BY: CT	APPROVED: IB

NOTES:

0 65 130 260 m

SCALE: 1:5,000 Coordinate System: NAD 1983 (CSRS) v6 UTM Zone 20N
Units: Meter

Document Path: Y:\Halifax\Data\Projects\2022\21266.01 NSPI - New Wind - Bear Lake - PHASE 04\GIS\PROV\BEAR LAKE PH4.aprx - libyson - 03/Apr/2023



- Assessment Area (Phase 4)
- Preliminary Assessment Area
- Quaternary Watersheds
- Possible Fish Bearing Watercourse (CBCL 2022)
- Non-Fish Habitat Watercourse (CBCL 2022)
- Predicted Water Flow Path (CBCL 2022)
- Provincially Mapped Watercourse
- Assessed Watercourses (CBCL 2022)**
- Small Permanent
- Small Permanent with Intermittent Characteristics
- Intermittent
- Intermittent with Ephemeral Characteristics
- Ephemeral with Intermittent Characteristics
- Ephemeral



**NSPI NEW WIND
BEAR LAKE**

**Watercourse Classification
and Field Results**

DATE: 2023-04-03	PROJ N°: 221266.01	FIGURE: 2-J2
DRAWN BY: NH	CHECKED BY: CT	APPROVED: IB

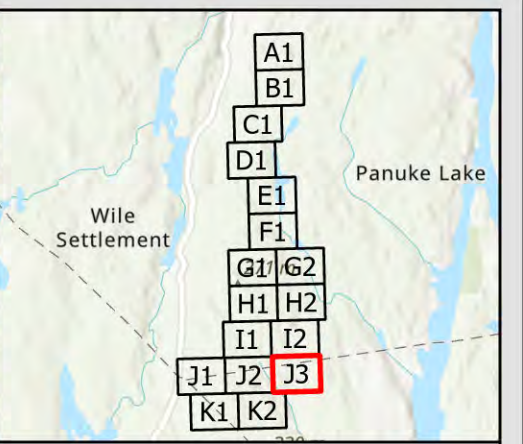
NOTES:

0 65 130 260 m

SCALE: 1:5,000

Coordinate System: NAD 1983 (CSRS) v6 UTM Zone 20N
Units: Meter

Document Path: Y:\Halifax\Data\Projects\2022\21266.01 NSPI - New Wind - Bear Lake - PHASE 04\4 CAD\08 GIS\PRO\BEAR LAKE PH4.aprx - ibjason - 03/Apr/2023



- Assessment Area (Phase 4)
- Preliminary Assessment Area
- Quaternary Watersheds
- Possible Fish Bearing Watercourse (CBCL 2022)
- Non-Fish Habitat Watercourse (CBCL 2022)
- Predicted Water Flow Path (CBCL 2022)
- Provincially Mapped Watercourse
- Assessed Watercourses (CBCL 2022)**
- Small Permanent
- Small Permanent with Intermittent Characteristics
- Intermittent
- Intermittent with Ephemeral Characteristics
- Ephemeral with Intermittent Characteristics
- Ephemeral



**NSPI NEW WIND
BEAR LAKE**

**Watercourse Classification
and Field Results**

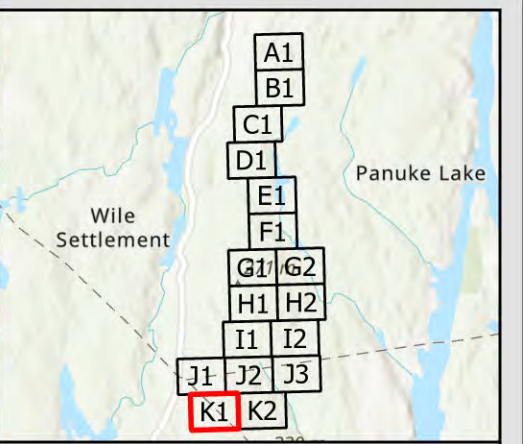
DATE: 2023-04-03	PROJ N°: 221266.01	FIGURE: 2-J3
DRAWN BY: NH	CHECKED BY: CT	APPROVED: IB

NOTES:

0 65 130 260 m

SCALE: 1:5,000 Coordinate System: NAD 1983 (CSRS) v6 UTM Zone 20N Units: Meter

Document Path: Y:\Halifax\Data\Projects\2022\21266.01 NSPI - New Wind - Bear Lake - PHASE 041 CAD\08 GIS\PROV\BEAR LAKE PH4.aprx - jboson - 03/Apr/2023



- Assessment Area (Phase 4)
- Preliminary Assessment Area
- Quaternary Watersheds
- Possible Fish Bearing Watercourse (CBCL 2022)
- Non-Fish Habitat Watercourse (CBCL 2022)
- Predicted Water Flow Path (CBCL 2022)
- Provincially Mapped Watercourse
- Assessed Watercourses (CBCL 2022)**
- Small Permanent
- Small Permanent with Intermittent Characteristics
- Intermittent
- Intermittent with Ephemeral Characteristics
- Ephemeral with Intermittent Characteristics
- Ephemeral



**NSPI NEW WIND
BEAR LAKE**

**Watercourse Classification
and Field Results**

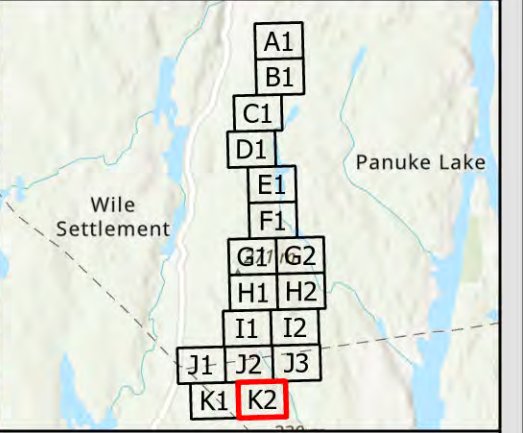
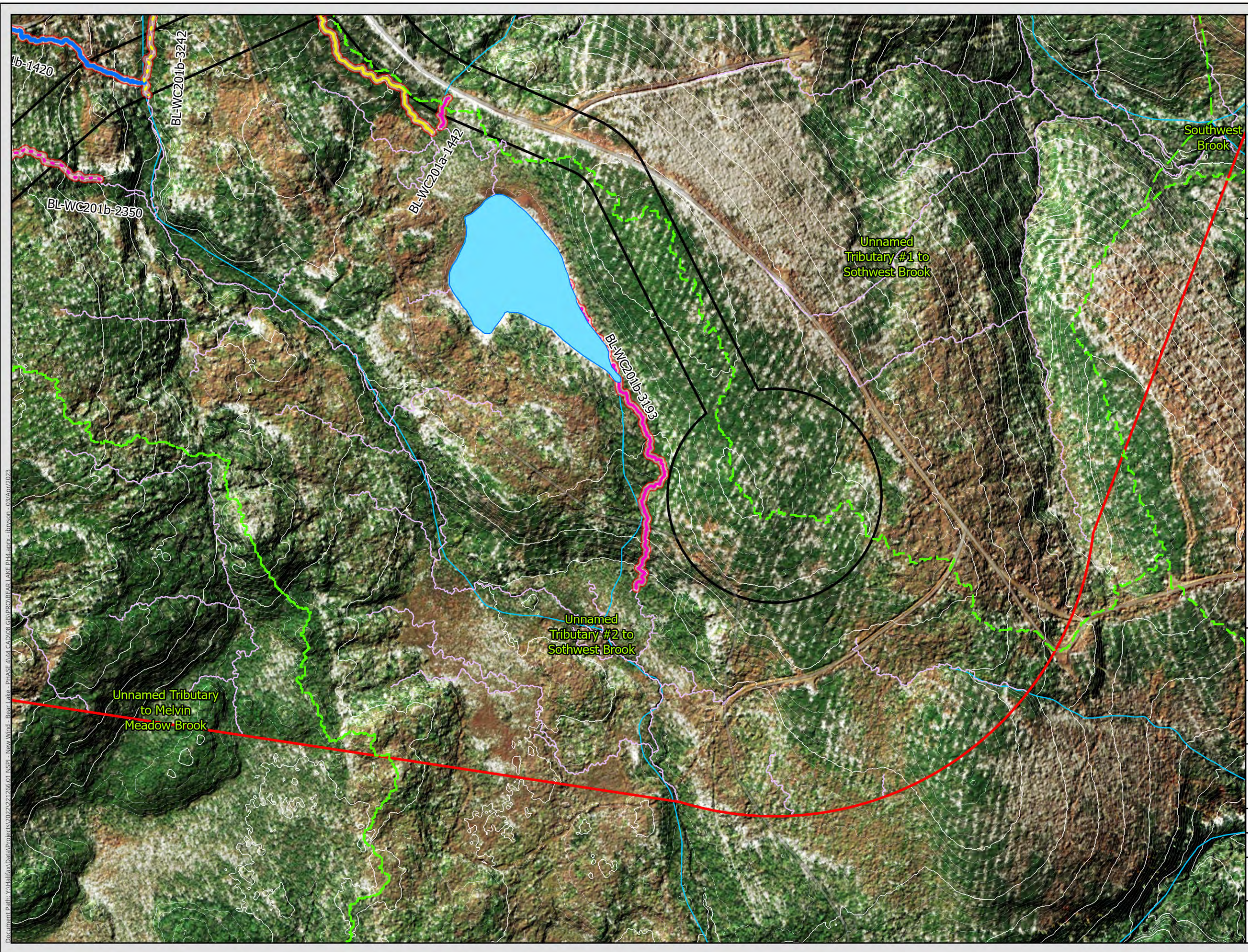
DATE: 2023-04-03	PROJ N°: 221266.01	FIGURE: 2-K1
DRAWN BY: NH	CHECKED BY: CT	APPROVED: IB

NOTES:

0 65 130 260 m

SCALE: 1:5,000 Coordinate System: NAD 1983 (CSRS) v6 UTM Zone 20N
Units: Meter

Document Path: Y:\Halifax\Projects\2022\21266.01 NSPI - New Wind - Bear Lake - PHASE 04\GIS\PROV\BEAR LAKE PH4.aprx - iboson - 03/Apr/2023



- Assessment Area (Phase 4)
- Preliminary Assessment Area
- Quaternary Watersheds
- Possible Fish Bearing Watercourse (CBCL 2022)
- Non-Fish Habitat Watercourse (CBCL 2022)
- Predicted Water Flow Path (CBCL 2022)
- Provincially Mapped Watercourse
- Assessed Watercourses (CBCL 2022)**
- Small Permanent
- Small Permanent with Intermittent Characteristics
- Intermittent
- Intermittent with Ephemeral Characteristics
- Ephemeral with Intermittent Characteristics
- Ephemeral



**NSPI NEW WIND
BEAR LAKE**

**Watercourse Classification
and Field Results**

DATE: 2023-04-03	PROJ N°: 221266.01	FIGURE: 2-K2
DRAWN BY: NH	CHECKED BY: CT	APPROVED: IB

NOTES:

0 65 130 260 m

SCALE: 1:5,000

Coordinate System: NAD 1983 (CSRS) v6 UTM Zone 20N
Units: Meter

Document Path: Y:\Halifax\Projects\2022\221266.01 NSPI - New Wind - Bear Lake - PHASE 04 CAD\08 GIS\PROV\BEAR LAKE PH4.aprx - ibyson - 03/Apr/2023

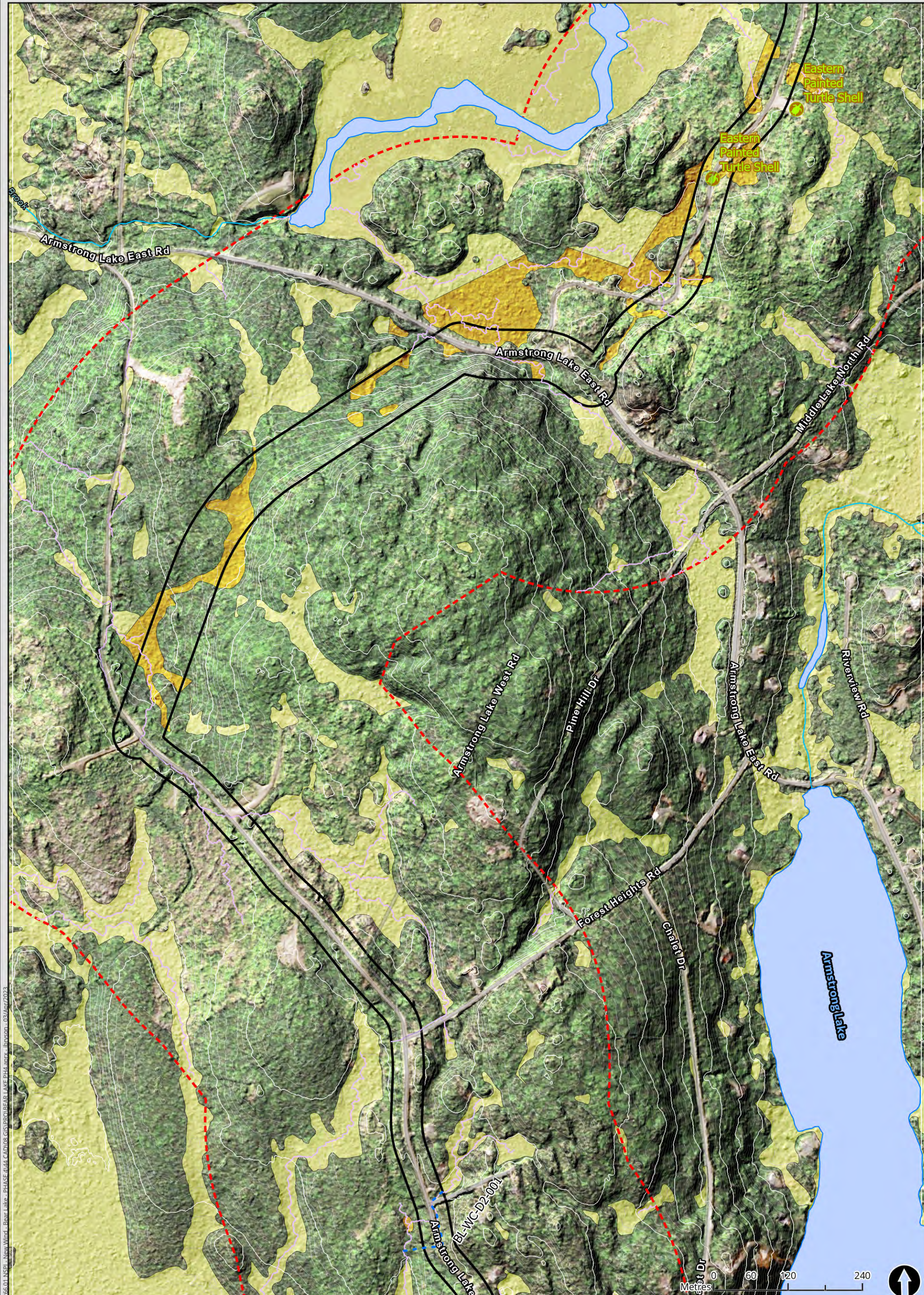
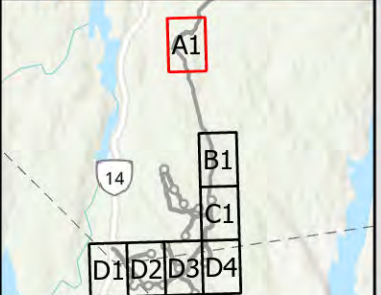


FIGURE: **3-A1**
 DATE: 2023-04-03
 PROJ N°: 221266.01
 DRAWN BY: NH
 CHECKED BY: BC


NSPI NEW WIND
BEAR LAKE
Possible Turtle Habitat
 SCALE: 1:5,500
 Coordinate System: NAD 1983 (CSRS) v6 UTM Zone 20N
 Units: Meter

-  Turtle Evidence (CBCL 2022)
-  Provincially Mapped Watercourse
-  Predicted Water Flow Path (CBCL 2022)
-  Delineated Wetland Area (CBCL 2022)
-  Predicted Wetland Area (CBCL 2022)
-  Assessment Area (Phase 4)
-  Preliminary Assessment Area
-  Provincially Mapped Waterbody (Possible Habitat for Snapping and/or Painted Turtle Only)
- Watercourse Classification (CBCL 2022)**
-  Small Permanent
-  Small Permanent with Intermittent Characteristics



Document Path: X:\Halls\Projects\2022\221266.01 NSPI - New Wind - Bear Lake - PHASE 4\GIS\PROJ\BEAR LAKE PH4.mxd; libson_03/04/2023



FIGURE: 3-B1	 NSPI NEW WIND BEAR LAKE		<ul style="list-style-type: none"> Turtle Evidence (CBCL 2022) Provincially Mapped Watercourse Predicted Water Flow Path (CBCL 2022) Delineated Wetland Area (CBCL 2022) Predicted Wetland Area (CBCL 2022) Assessment Area (Phase 4) Preliminary Assessment Area 	<ul style="list-style-type: none"> Provincially Mapped Waterbody (Possible Habitat for Snapping and/or Painted Turtle Only) <p>Watercourse Classification (CBCL 2022)</p> <ul style="list-style-type: none"> Small Permanent Small Permanent with Intermittent Characteristics 	
DATE: 2023-04-03	<p style="text-align: center; margin: 0;">Possible Turtle Habitat</p> <p style="font-size: small; margin: 0;">SCALE: 1:5,500 Coordinate System: NAD 1983 (CSRS) v6 UTM Zone 20N Units: Meter</p>				
PROJ N°: 221266.01					
DRAWN BY: NH					
CHECKED BY: BC					

Document Path: \\h1\h1\dev\h1\Projects\2022\221266.01 NSPI - New Wind - Bear Lake - PHASE 4 - GIS\PROJ\BEAR LAKE PH4 - 2023-03\Map\2023

