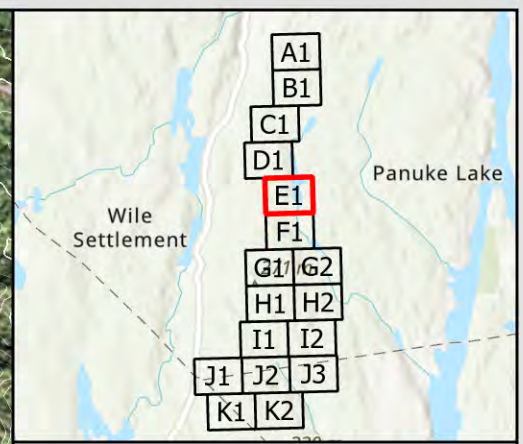
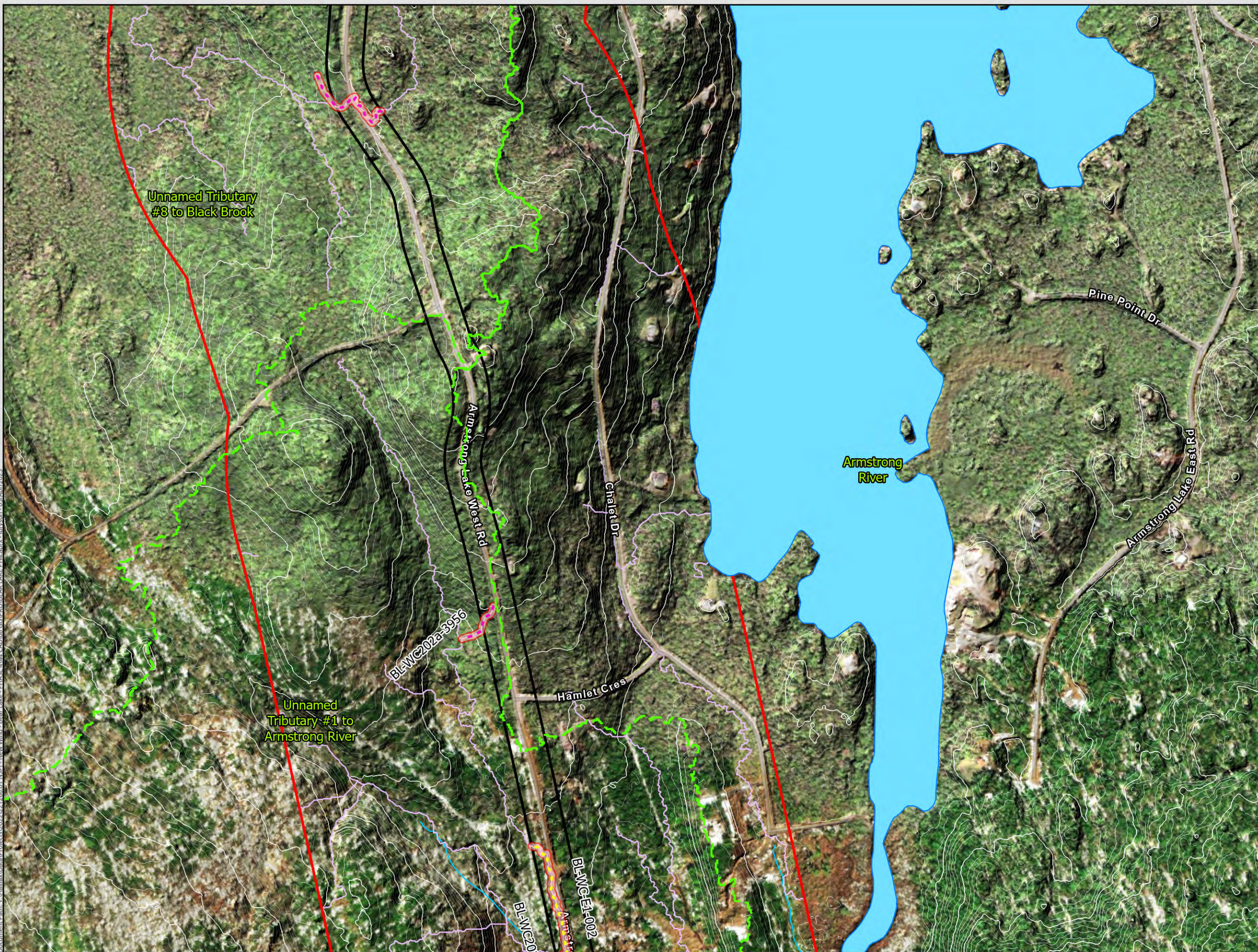


Document Path: Y:\Halifax\Bearing\Projects\2022\21266.01 NSPI - New Wind - Bear Lake - PHASE 04 CAD\08 GIS\PROV\BEAR LAKE PH4.aprx - iboson - 03/Apr/2023



- Assessment Area (Phase 4)
- Preliminary Assessment Area
- Quaternary Watersheds
- Possible Fish Bearing Watercourse (CBCL 2022)
- Non-Fish Habitat Watercourse (CBCL 2022)
- Predicted Water Flow Path (CBCL 2022)
- Provincially Mapped Watercourse
- Assessed Watercourses (CBCL 2022)**
- Small Permanent
- Small Permanent with Intermittent Characteristics
- Intermittent
- Intermittent with Ephemeral Characteristics
- Ephemeral with Intermittent Characteristics
- Ephemeral



### NSPI NEW WIND BEAR LAKE

### Watercourse Classification and Field Results

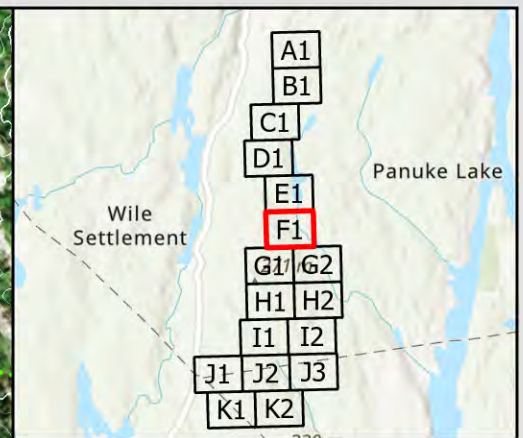
DATE: 2023-04-03	PROJ N°: 221266.01	FIGURE: <b>2-E1</b>
DRAWN BY: NH	CHECKED BY: CT	APPROVED: IB

NOTES:

0 65 130 260 m

SCALE: 1:5,000

Coordinate System: NAD 1983 (CSRS) v6 UTM Zone 20N  
Units: Meter



- Assessment Area (Phase 4)
- Preliminary Assessment Area
- Quaternary Watersheds
- Possible Fish Bearing Watercourse (CBCL 2022)
- Non-Fish Habitat Watercourse (CBCL 2022)
- Predicted Water Flow Path (CBCL 2022)
- Provincially Mapped Watercourse
- Assessed Watercourses (CBCL 2022)**
- Small Permanent
- Small Permanent with Intermittent Characteristics
- Intermittent
- Intermittent with Ephemeral Characteristics
- Ephemeral with Intermittent Characteristics
- Ephemeral



**NSPI NEW WIND  
BEAR LAKE**

**Watercourse Classification  
and Field Results**

DATE: 2023-04-03	PROJ N°: 221266.01	FIGURE: <b>2-F1</b>
DRAWN BY: NH	CHECKED BY: CT	APPROVED: IB

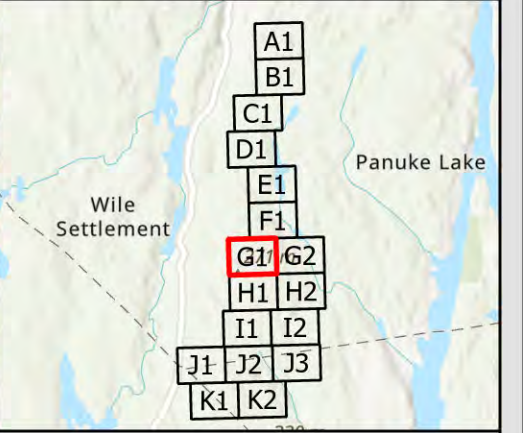
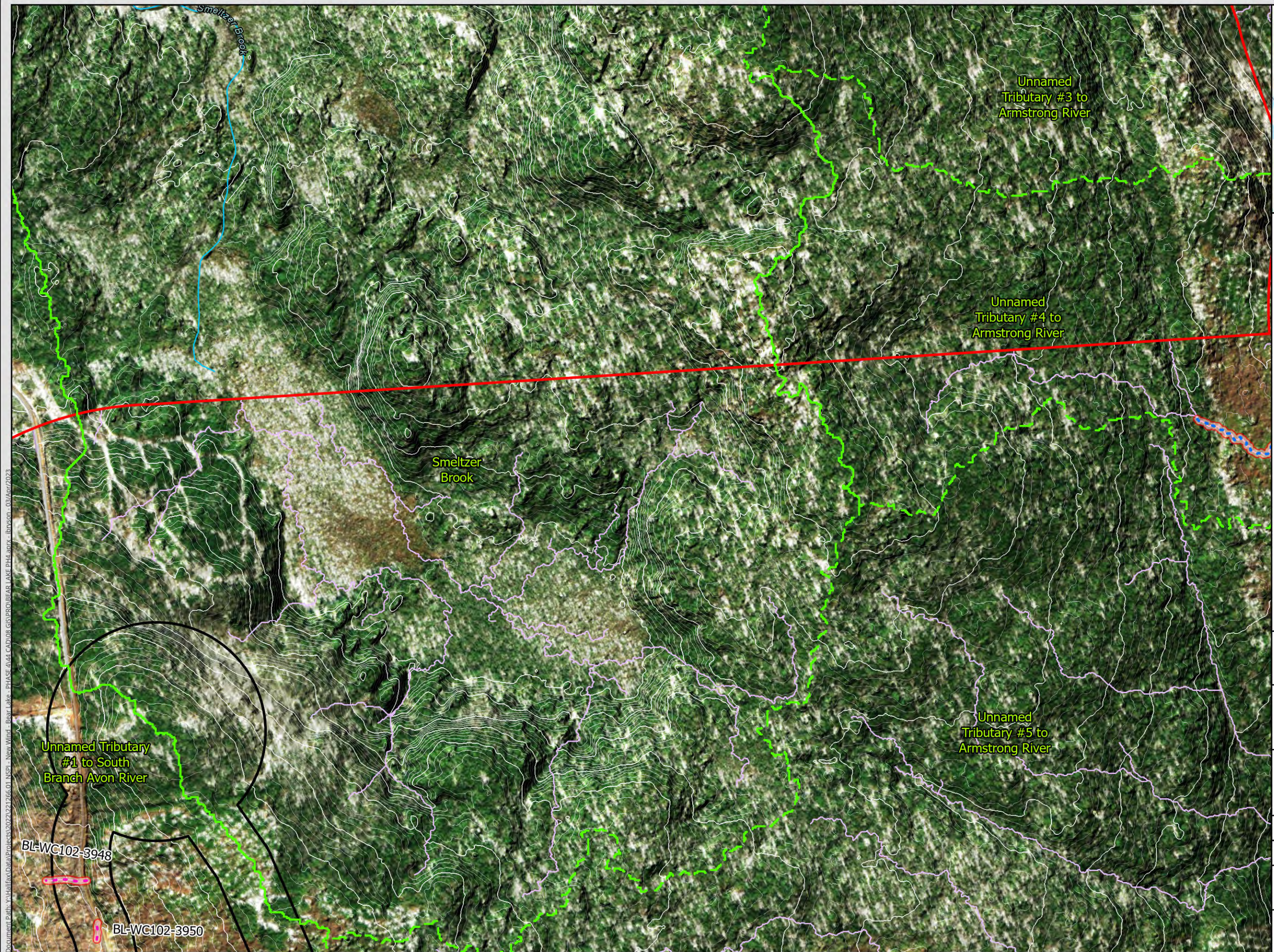
NOTES:

0 65 130 260 m

SCALE: 1:5,000

Coordinate System: NAD 1983 (CSRS) v6 UTM Zone 20N  
Units: Meter

Document Path: Y:\Halifax\Projects\2022\21266.01 NSPI - New Wind - Bear Lake - Phase 04 GIS\PROV\BEAR LAKE PH4.aprx - ibjason - 03/Apr/2023



- Assessment Area (Phase 4)
- Preliminary Assessment Area
- Quaternary Watersheds
- Possible Fish Bearing Watercourse (CBCL 2022)
- Non-Fish Habitat Watercourse (CBCL 2022)
- Predicted Water Flow Path (CBCL 2022)
- Provincially Mapped Watercourse
- Assessed Watercourses (CBCL 2022)**
- Small Permanent
- Small Permanent with Intermittent Characteristics
- Intermittent
- Intermittent with Ephemeral Characteristics
- Ephemeral with Intermittent Characteristics
- Ephemeral



**NSPI NEW WIND  
BEAR LAKE**

**Watercourse Classification  
and Field Results**

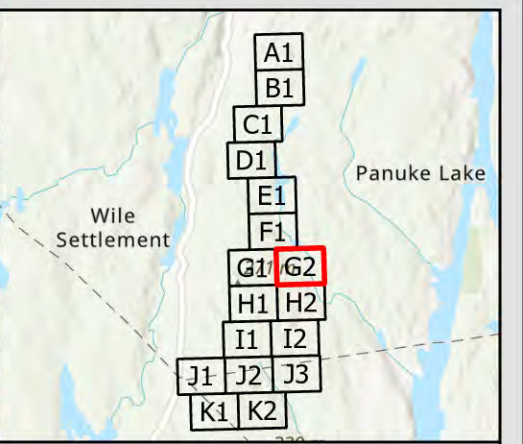
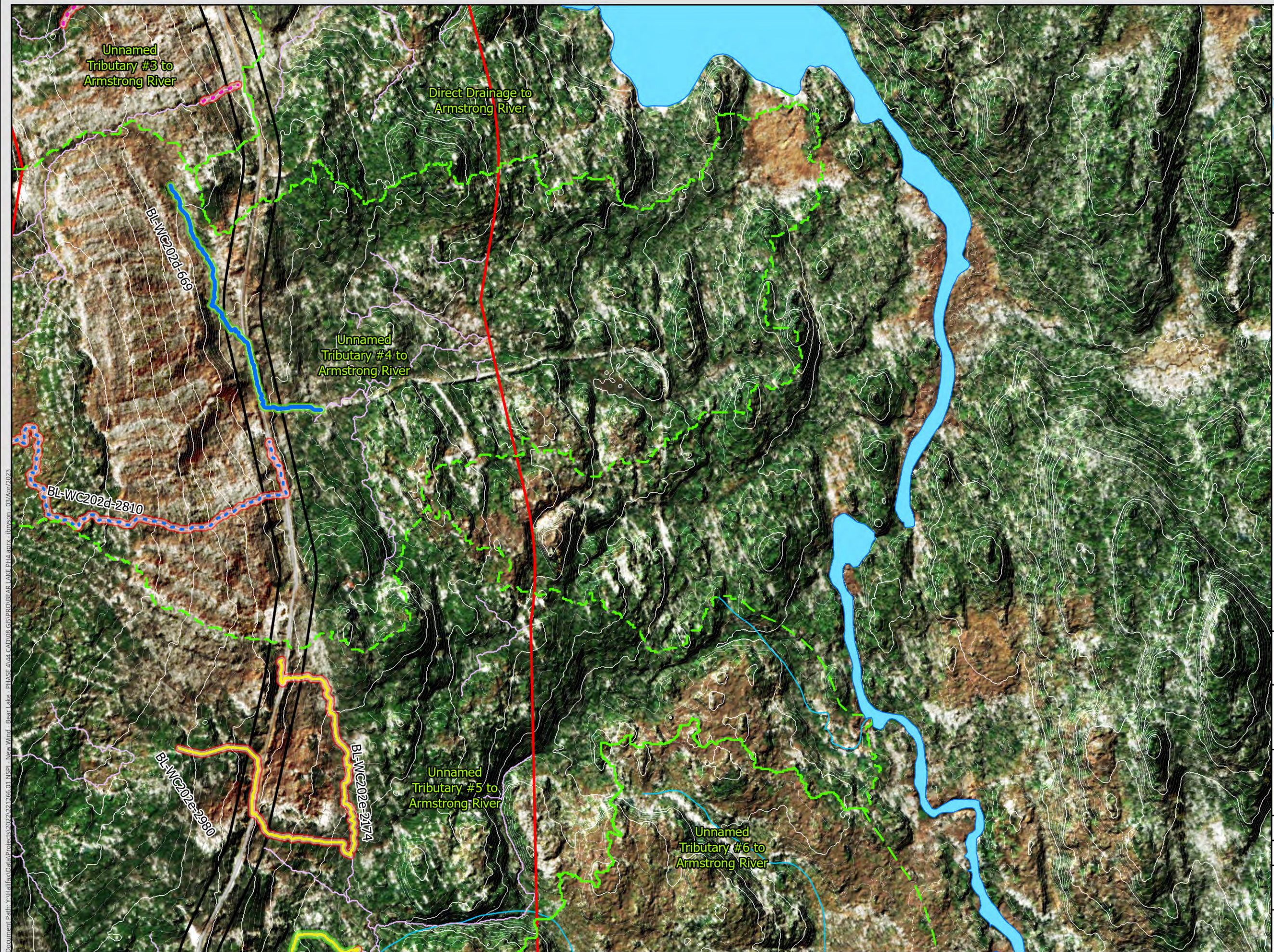
DATE: 2023-04-03	PROJ N°: 221266.01	FIGURE: <b>2-G1</b>
DRAWN BY: NH	CHECKED BY: CT	APPROVED: IB

NOTES:

0 65 130 260 m

SCALE: 1:5,000 Coordinate System: NAD 1983 (CSRS) v6 UTM Zone 20N  
Units: Meter

Document Path: Y:\Halifax\Projects\2022\21266.01 NSPI - New Wind - Bear Lake - PHASE 04\GIS\PROV\BEAR LAKE PH4.aprx - libson - 03/Apr/2023



- Assessment Area (Phase 4)
- Preliminary Assessment Area
- Quaternary Watersheds
- Possible Fish Bearing Watercourse (CBCL 2022)
- Non-Fish Habitat Watercourse (CBCL 2022)
- Predicted Water Flow Path (CBCL 2022)
- Provincially Mapped Watercourse
- Assessed Watercourses (CBCL 2022)**
- Small Permanent
- Small Permanent with Intermittent Characteristics
- Intermittent
- Intermittent with Ephemeral Characteristics
- Ephemeral with Intermittent Characteristics
- Ephemeral



**NSPI NEW WIND  
BEAR LAKE**

**Watercourse Classification  
and Field Results**

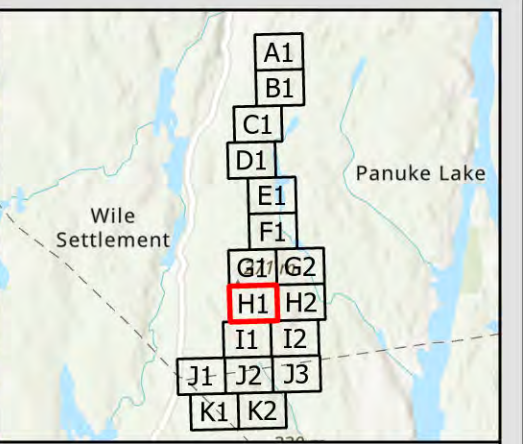
DATE: 2023-04-03	PROJ N°: 221266.01	FIGURE: <b>2-G2</b>
DRAWN BY: NH	CHECKED BY: CT	APPROVED: IB

NOTES:

0 65 130 260 m

SCALE: 1:5,000 Coordinate System: NAD 1983 (CSRS) v6 UTM Zone 20N  
Units: Meter

Document Path: Y:\Halifax\Projects\2022\21266.01 NSPI - New Wind - Bear Lake - PHASE 04\GIS\PROV\BEAR LAKE PH4.aprx - jboson - 03/Apr/2023



- Assessment Area (Phase 4)
- Preliminary Assessment Area
- Quaternary Watersheds
- Possible Fish Bearing Watercourse (CBCL 2022)
- Non-Fish Habitat Watercourse (CBCL 2022)
- Predicted Water Flow Path (CBCL 2022)
- Provincially Mapped Watercourse
- Assessed Watercourses (CBCL 2022)**
- Small Permanent
- Small Permanent with Intermittent Characteristics
- Intermittent
- Intermittent with Ephemeral Characteristics
- Ephemeral with Intermittent Characteristics
- Ephemeral



**NSPI NEW WIND  
BEAR LAKE**

**Watercourse Classification  
and Field Results**

DATE: 2023-04-03	PROJ N°: 221266.01	FIGURE: <b>2-H1</b>
DRAWN BY: NH	CHECKED BY: CT	APPROVED: IB

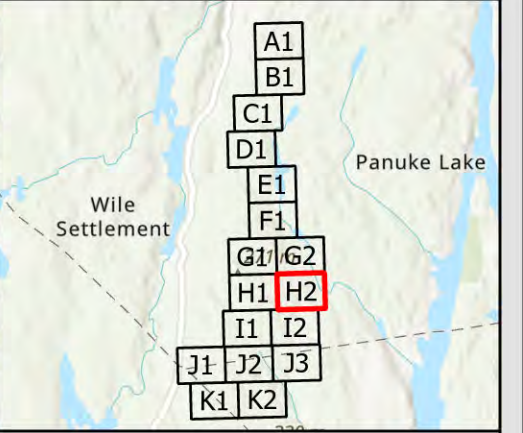
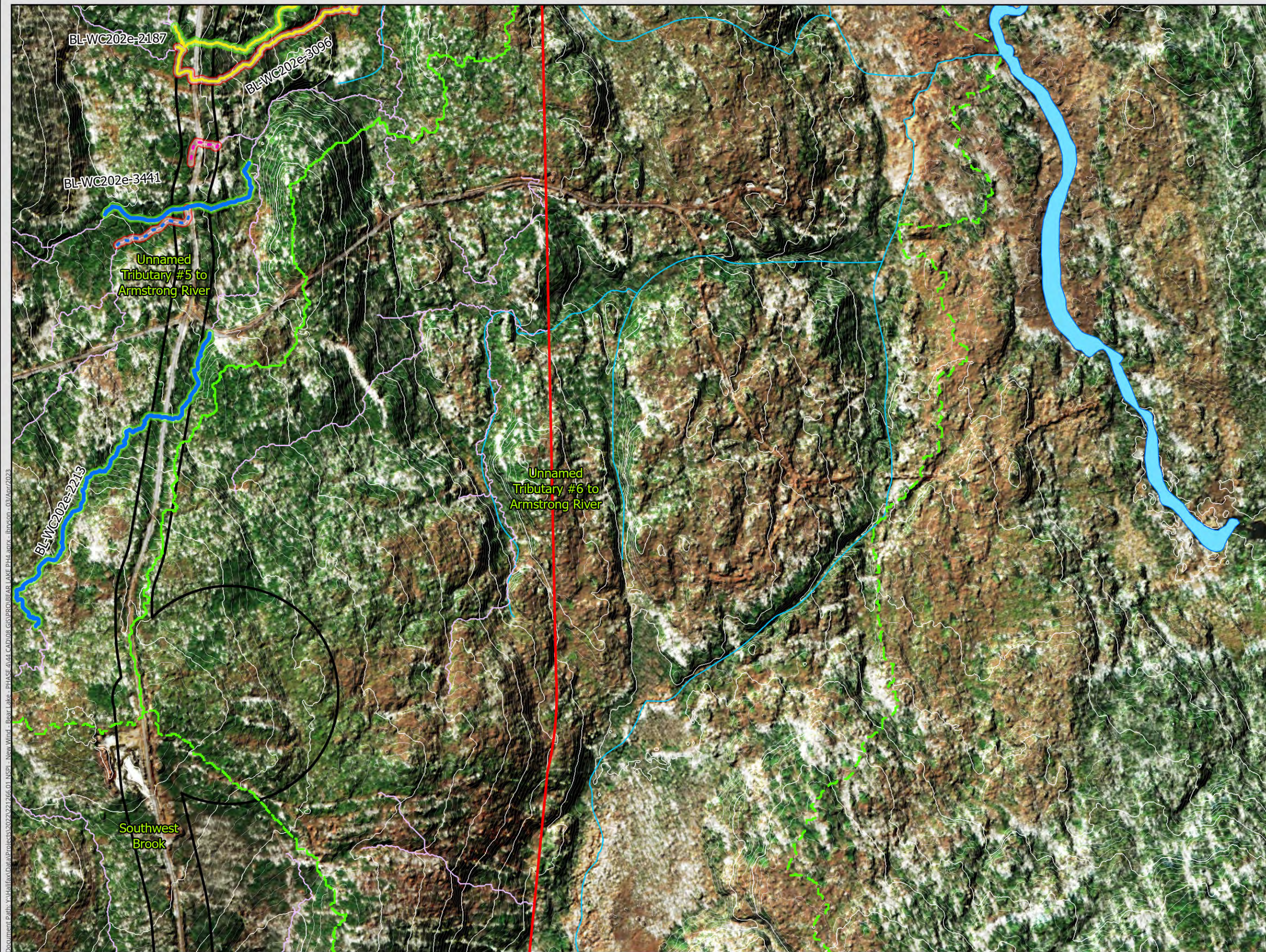
NOTES:

0 65 130 260 m

SCALE: 1:5,000

Coordinate System: NAD 1983 (CSRS) v6 UTM Zone 20N  
Units: Meter

Document Path: Y:\Halifax\Data\Projects\2022\21266.01 NSPI - New Wind - Bear Lake - PHASE 04 CAD\08 GIS\PROV\BEAR LAKE PH4.aprx - iboson - 03/Apr/2023



- Assessment Area (Phase 4)
- Preliminary Assessment Area
- Quaternary Watersheds
- Possible Fish Bearing Watercourse (CBCL 2022)
- Non-Fish Habitat Watercourse (CBCL 2022)
- Predicted Water Flow Path (CBCL 2022)
- Provincially Mapped Watercourse
- Assessed Watercourses (CBCL 2022)**
- Small Permanent
- Small Permanent with Intermittent Characteristics
- Intermittent
- Intermittent with Ephemeral Characteristics
- Ephemeral with Intermittent Characteristics
- Ephemeral



**NSPI NEW WIND  
BEAR LAKE**

**Watercourse Classification  
and Field Results**

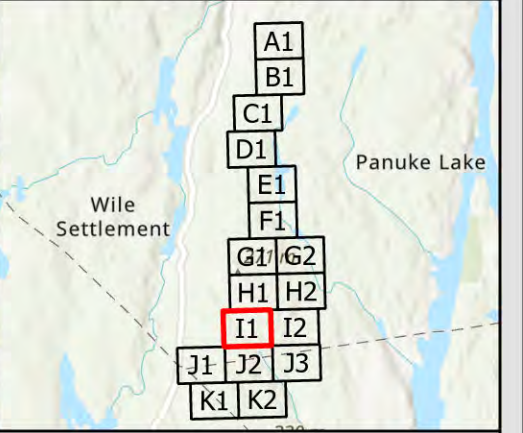
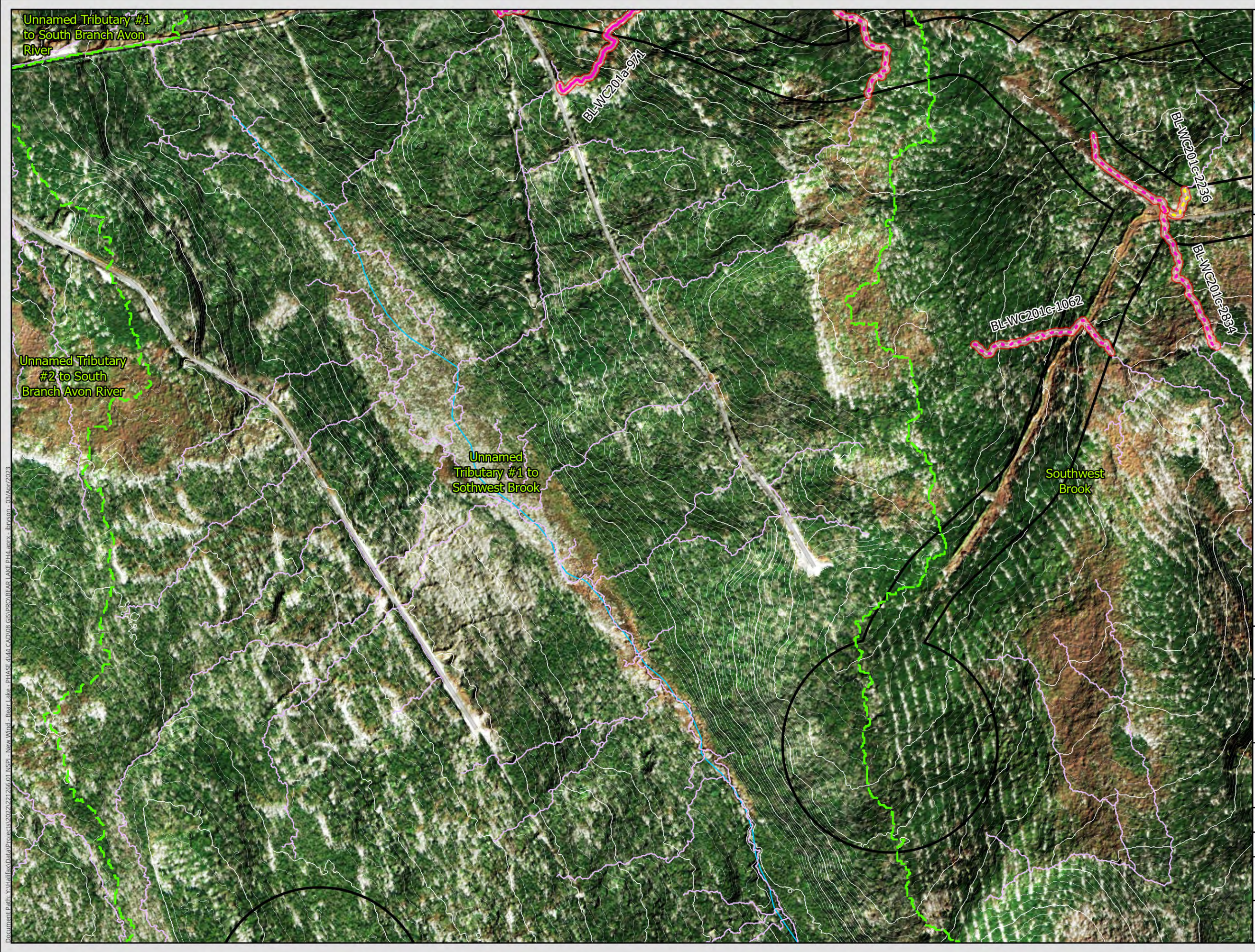
DATE: 2023-04-03	PROJ N°: 221266.01	FIGURE: <b>2-H2</b>
DRAWN BY: NH	CHECKED BY: CT	APPROVED: IB

NOTES:

SCALE: 1:5,000  
Units: Meter

Coordinate System: NAD 1983 (CSRS) v6 UTM Zone 20N

Document Path: Y:\Halifax\Data\Projects\2022\221266.01 NSPI - New Wind - Bear Lake - PHASE 04\GIS\PROV\BEAR LAKE PH4.aprx - libson - 03/Apr/2023



- Assessment Area (Phase 4)
- Preliminary Assessment Area
- Quaternary Watersheds
- Possible Fish Bearing Watercourse (CBCL 2022)
- Non-Fish Habitat Watercourse (CBCL 2022)
- Predicted Water Flow Path (CBCL 2022)
- Provincially Mapped Watercourse
- Assessed Watercourses (CBCL 2022)**
- Small Permanent
- Small Permanent with Intermittent Characteristics
- Intermittent
- Intermittent with Ephemeral Characteristics
- Ephemeral with Intermittent Characteristics
- Ephemeral



**NSPI NEW WIND  
BEAR LAKE**

**Watercourse Classification  
and Field Results**

DATE: 2023-04-03	PROJ N°: 221266.01	FIGURE: <b>2-11</b>
DRAWN BY: NH	CHECKED BY: CT	APPROVED: IB

NOTES:

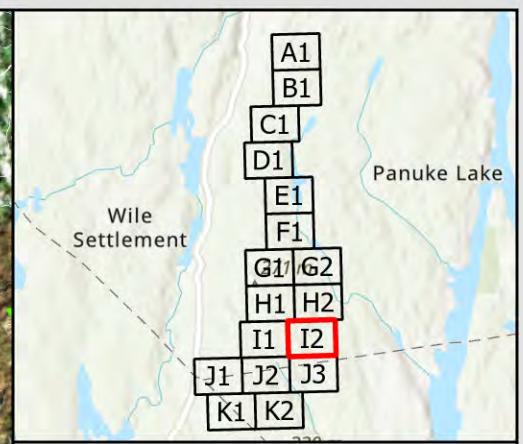
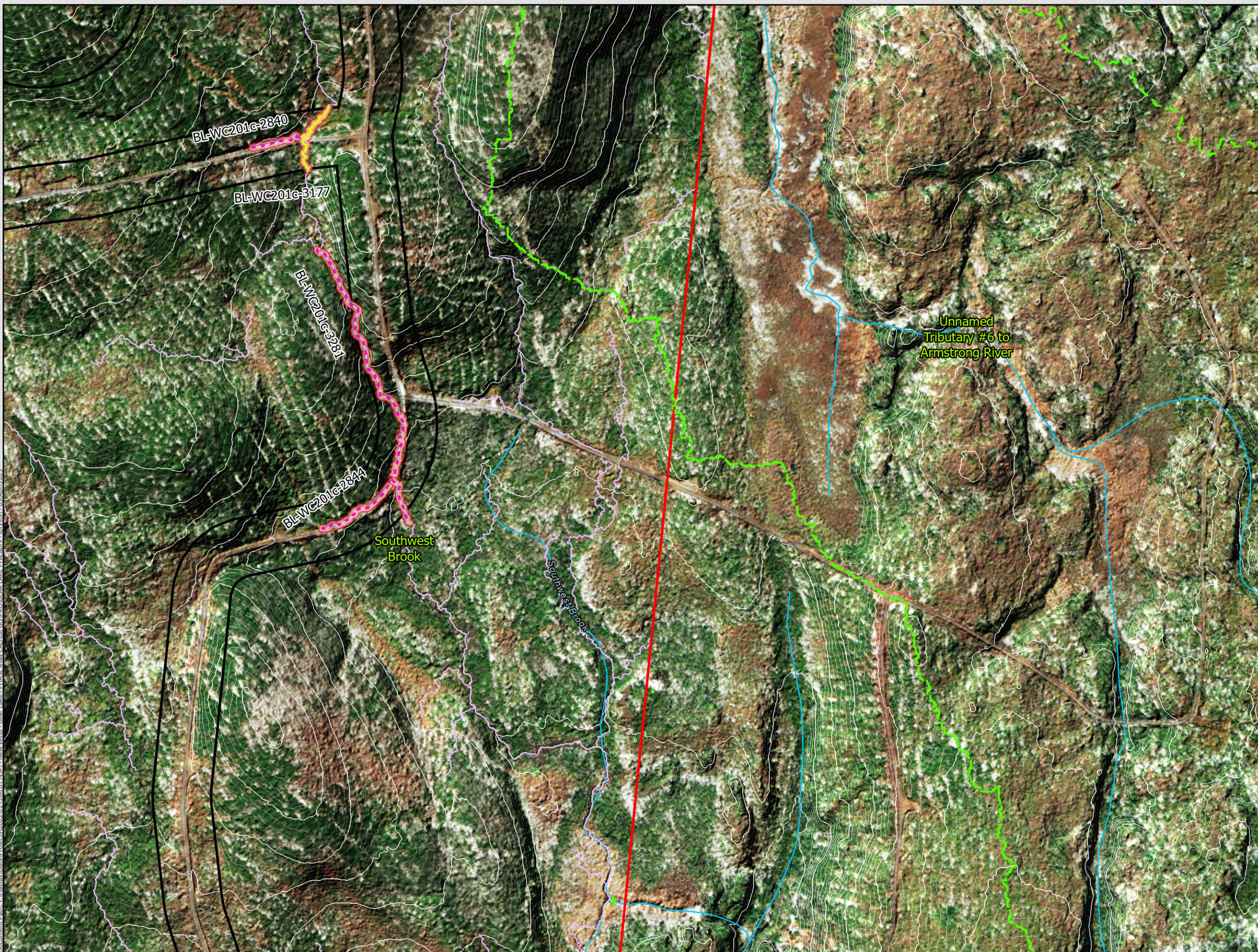
0 65 130 260 m

SCALE: 1:5,000

Coordinate System: NAD 1983 (CSRS) v6 UTM Zone 20N  
Units: Meter

Document Path: Y:\Halifax\Projects\2022\21266.01 NSPI - New Wind - Bear Lake - PHASE 04\GIS\PROV\BEAR LAKE PH4.aprx - iboson - 03/Apr/2023

Document Path: Y:\Halifax\Data\Projects\2022\21266.01 NSPI - New Wind - Bear Lake - Phase 4\GIS\PROV\BEAR LAKE PH4.aprx - iboson - 03/Apr/2023



- Assessment Area (Phase 4)
- Preliminary Assessment Area
- Quaternary Watersheds
- Possible Fish Bearing Watercourse (CBCL 2022)
- Non-Fish Habitat Watercourse (CBCL 2022)
- Predicted Water Flow Path (CBCL 2022)
- Provincially Mapped Watercourse
- Assessed Watercourses (CBCL 2022)**
- Small Permanent
- Small Permanent with Intermittent Characteristics
- Intermittent
- Intermittent with Ephemeral Characteristics
- Ephemeral with Intermittent Characteristics
- Ephemeral



### NSPI NEW WIND BEAR LAKE

### Watercourse Classification and Field Results

DATE: 2023-04-03	PROJ N°: 221266.01	FIGURE: <b>2-12</b>
DRAWN BY: NH	CHECKED BY: CT	APPROVED: IB

NOTES:

0 65 130 260 m

SCALE: 1:5,000

Coordinate System: NAD 1983 (CSRS) v6 UTM Zone 20N  
Units: Meter