

# DATA REPORT 6931: Benjamins Mill, NS

Prepared 10 May 2021  
by C. Robicheau, Data Manager

## CONTENTS OF REPORT

### 1.0 Preface

- 1.1 Data List
- 1.2 Restrictions
- 1.3 Additional Information

Map 1: Buffered Study Area

### 2.0 Rare and Endangered Species

- 2.1 Flora
- 2.2 Fauna

Map 2: Flora and Fauna

### 3.0 Special Areas

- 3.1 Managed Areas
- 3.2 Significant Areas

Map 3: Special Areas

### 4.0 Rare Species Lists

- 4.1 Fauna
- 4.2 Flora
- 4.3 Location Sensitive Species
- 4.4 Source Bibliography

### 5.0 Rare Species within 100 km

- 5.1 Source Bibliography



**Map 1.** A 100 km buffer around the study area

## 1.0 PREFACE

The Atlantic Canada Conservation Data Centre (AC CDC; [www.accdc.com](http://www.accdc.com)) is part of a network of NatureServe data centres and heritage programs serving 50 states in the U.S.A, 10 provinces and 1 territory in Canada, plus several Central and South American countries. The NatureServe network is more than 30 years old and shares a common conservation data methodology. The AC CDC was founded in 1997, and maintains data for the jurisdictions of New Brunswick, Nova Scotia, Prince Edward Island, and Newfoundland and Labrador. Although a non-governmental agency, the AC CDC is supported by 6 federal agencies and 4 provincial governments, as well as through outside grants and data processing fees.

Upon request and for a fee, the AC CDC queries its database and produces customized reports of the rare and endangered flora and fauna known to occur in or near a specified study area. As a supplement to that data, the AC CDC includes locations of managed areas with some level of protection, and known sites of ecological interest or sensitivity.

### 1.1 DATA LIST

Included datasets:

#### Filename

BenjaminsMilNS\_6931ob.xls  
BenjaminsMilNS\_6931ob100km.xls  
BenjaminsMilNS\_6931msa.xls

#### Contents

Rare or legally-protected Flora and Fauna in your study area  
A list of Rare and legally protected Flora and Fauna within 100 km of your study area  
Managed and Biologically Significant Areas in your study area

## 1.2 RESTRICTIONS

The AC CDC makes a strong effort to verify the accuracy of all the data that it manages, but it shall not be held responsible for any inaccuracies in data that it provides. By accepting AC CDC data, recipients assent to the following limits of use:

- a) Data is restricted to use by trained personnel who are sensitive to landowner interests and to potential threats to rare and/or endangered flora and fauna posed by the information provided.
- b) Data is restricted to use by the specified Data User; any third party requiring data must make its own data request.
- c) The AC CDC requires Data Users to cease using and delete data 12 months after receipt, and to make a new request for updated data if necessary at that time.
- d) AC CDC data responses are restricted to the data in our Data System at the time of the data request.
- e) Each record has an estimate of locational uncertainty, which must be referenced in order to understand the record's relevance to a particular location. Please see attached Data Dictionary for details.
- f) AC CDC data responses are not to be construed as exhaustive inventories of taxa in an area.
- g) The absence of a taxon cannot be inferred by its absence in an AC CDC data response.

## 1.3 ADDITIONAL INFORMATION

The accompanying Data Dictionary provides metadata for the data provided.

Please direct any additional questions about AC CDC data to the following individuals:

### Plants, Lichens, Ranking Methods, All other Inquiries

Sean Blaney, Senior Scientist, Executive Director

Tel: (506) 364-2658

[sean.blaney@accdc.ca](mailto:sean.blaney@accdc.ca)

### Animals (Fauna)

John Klymko, Zoologist

Tel: (506) 364-2660

[john.klymko@accdc.ca](mailto:john.klymko@accdc.ca)

### Plant Communities

Sarah Robinson, Community Ecologist

Tel: (506) 364-2664

[sarah.robinson@accdc.ca](mailto:sarah.robinson@accdc.ca)

### Data Management, GIS

James Churchill, Data Manager

Tel: (902) 679-6146

[james.churchill@accdc.ca](mailto:james.churchill@accdc.ca)

### Billing

Jean Breau

Tel: (506) 364-2657

[jean.breau@accdc.ca](mailto:jean.breau@accdc.ca)

Questions on the biology of Federal Species at Risk can be directed to AC CDC: (506) 364-2658, with questions on Species at Risk regulations to: Samara Eaton, Canadian Wildlife Service (NB and PE): (506) 364-5060 or Julie McKnight, Canadian Wildlife Service (NS): (902) 426-4196.

For provincial information about rare taxa and protected areas, or information about game animals, deer yards, old growth forests, archeological sites, fish habitat etc., in New Brunswick, please contact Hubert Askanas, Energy and Resource Development: (506) 453-5873.

For provincial information about rare taxa and protected areas, or information about game animals, deer yards, old growth forests, archeological sites, fish habitat etc., in Nova Scotia, please contact Donna Hurlburt, NS DLF: (902) 679-6886. To determine if location-sensitive species (section 4.3) occur near your study site please contact a NS DLF Regional Biologist:

**Western:** Emma Vost

(902) 670-8187

[Emma.Vost@novascotia.ca](mailto:Emma.Vost@novascotia.ca)

**Western:** Sarah Spencer

(902) 541-0081

[Sarah.Spencer@novascotia.ca](mailto:Sarah.Spencer@novascotia.ca)

**Central:** Shavonne Meyer

(902) 893-0816

[Shavonne.Meyer@novascotia.ca](mailto:Shavonne.Meyer@novascotia.ca)

**Central:** Kimberly George

(902) 890-1046

[Kimberly.George@novascotia.ca](mailto:Kimberly.George@novascotia.ca)

**Eastern:** Harrison Moore

(902) 497-4119

[Harrison.Moore@novascotia.ca](mailto:Harrison.Moore@novascotia.ca)

**Eastern:** Maureen Cameron-MacMillan

(902) 295-2554

[Maureen.Cameron-MacMillan@novascotia.ca](mailto:Maureen.Cameron-MacMillan@novascotia.ca)

**Eastern:** Elizabeth Walsh

(902) 563-3370

[Elizabeth.Walsh@novascotia.ca](mailto:Elizabeth.Walsh@novascotia.ca)

For provincial information about rare taxa and protected areas, or information about game animals, fish habitat etc., in Prince Edward Island, please contact Garry Gregory, PEI Dept. of Communities, Land and Environment: (902) 569-7595.

## 2.0 RARE AND ENDANGERED SPECIES

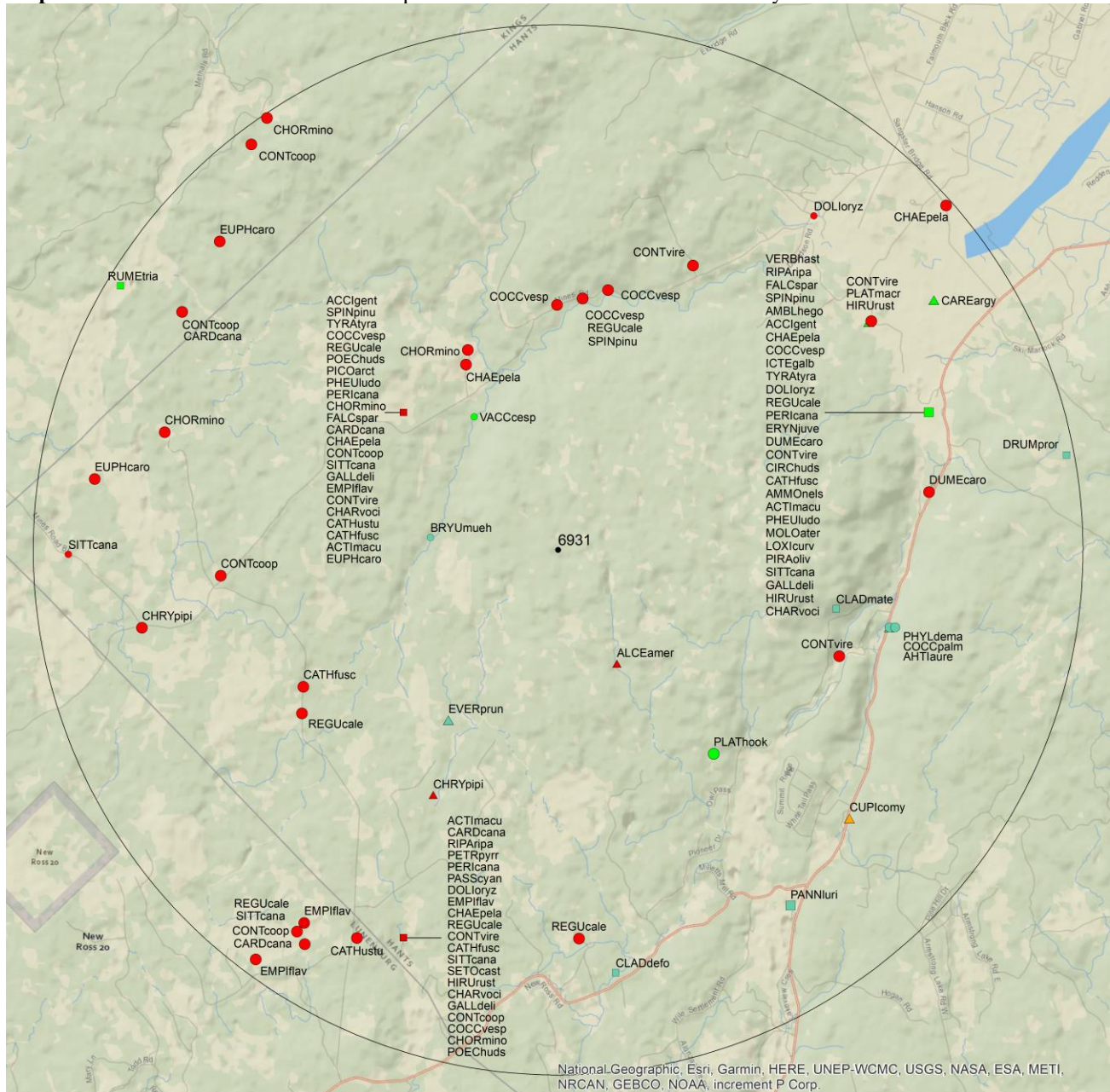
### 2.1 FLORA

The study area contains 6 records of 6 vascular, 10 records of 9 nonvascular flora (Map 2 and attached: \*ob.xls).

### 2.2 FAUNA

The study area contains 210 records of 38 vertebrate, 3 records of 3 invertebrate fauna (Map 2 and attached data files - see 1.1 Data List). Please see section 4.3 to determine if 'location-sensitive' species occur near your study site.

**Map 2:** Known observations of rare and/or protected flora and fauna within the study area.



#### RESOLUTION

- 4.7 within 50s of kilometers
- 4.0 within 10s of kilometers
- 3.7 within 5s of kilometers
- △ 3.0 within kilometers
- △ 2.7 within 500s of meters
- ◇ 2.0 within 100s of meters
- ◇ 1.7 within 10s of meters

#### HIGHER TAXON

- vertebrate fauna
- invertebrate fauna
- vascular flora
- nonvascular flora



### 3.0 SPECIAL AREAS

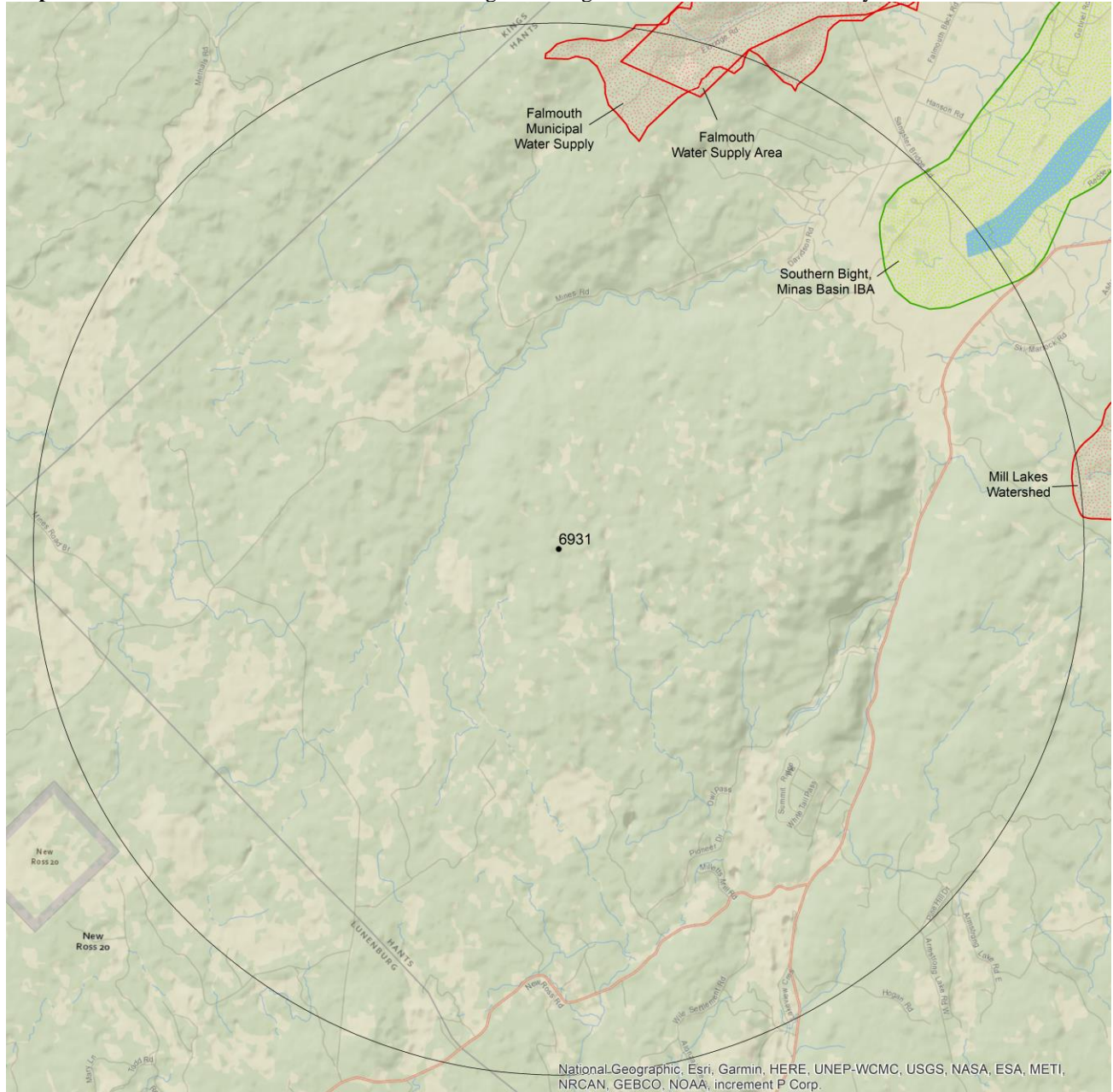
#### 3.1 MANAGED AREAS

The GIS scan identified 3 managed areas in the vicinity of the study area (Map 3 and attached file: \*msa.xls).

#### 3.2 SIGNIFICANT AREAS

The GIS scan identified 1 biologically significant site in the vicinity of the study area (Map 3 and attached file: \*msa.xls).

**Map 3:** Boundaries and/or locations of known Managed and Significant Areas within the study area.



 Managed Area  Significant Area

## 4.0 RARE SPECIES LISTS

Rare and/or endangered taxa (excluding “location-sensitive” species, section 4.3) within the study area listed in order of concern, beginning with legally listed taxa, with the number of observations per taxon and the distance in kilometers from study area centroid to the closest observation ( $\pm$  the precision, in km, of the record). [P] = vascular plant, [N] = nonvascular plant, [A] = vertebrate animal, [I] = invertebrate animal, [C] = community. Note: records are from attached files \*ob.xls/\*ob.shp only.

### 4.1 FLORA

	Scientific Name	Common Name	COSEWIC	SARA	Prov Legal Prot	Prov Rarity Rank	# recs	Distance (km)
N	<i>Pannaria lurida</i>	Wrinkled Shingle Lichen	Threatened	Threatened	Threatened	S1S2	1	8.1 $\pm$ 13.0
N	<i>Bryum muehlenbeckii</i>	Muehlenbeck's Bryum Moss				S1?	2	2.4 $\pm$ 0.0
N	<i>Phyllicium demangeonii</i>	Black Rock-wafer Lichen				S2?	1	6.6 $\pm$ 0.0
N	<i>Ahtiana aurescens</i>	Eastern Candlewax Lichen				S2S3	1	6.5 $\pm$ 2.0
N	<i>Cladonia mateocyatha</i>	Mixed-up Pixie-cup				S2S3	1	5.4 $\pm$ 6.0
N	<i>Cladonia deformis</i>	Lesser Sulphur-cup Lichen				S2S3	1	8.1 $\pm$ 4.0
N	<i>Drummondia prorepens</i>	a Moss				S3?	1	9.9 $\pm$ 5.0
N	<i>Coccocarpia palmicola</i>	Salted Shell Lichen				S3S4	1	6.5 $\pm$ 0.0
N	<i>Evernia prunastri</i>	Valley Oakmoss Lichen				S3S4	1	3.9 $\pm$ 2.0
P	<i>Rumex triangulivalvis</i>	Triangular-valve Dock				S2	1	9.7 $\pm$ 5.0
P	<i>Platanthera macrophylla</i>	Large Round-Leaved Orchid				S2	1	7.3 $\pm$ 1.0
P	<i>Vaccinium cespitosum</i>	dwarf bilberry				S3	1	3.0 $\pm$ 0.0
P	<i>Verbena hastata</i>	Blue Vervain				S3	1	7.5 $\pm$ 7.0
P	<i>Platanthera hookeri</i>	Hooker's Orchid				S3	1	4.9 $\pm$ 0.0
P	<i>Carex argyrantha</i>	Silvery-flowered Sedge				S3S4	1	8.6 $\pm$ 1.0

### 4.2 FAUNA

	Scientific Name	Common Name	COSEWIC	SARA	Prov Legal Prot	Prov Rarity Rank	# recs	Distance (km)
A	<i>Chaetura pelagica</i>	Chimney Swift	Threatened	Threatened	Endangered	S2B,S1M	27	3.9 $\pm$ 0.0
A	<i>Riparia riparia</i>	Bank Swallow	Threatened	Threatened	Endangered	S2S3B	3	7.5 $\pm$ 7.0
A	<i>Hirundo rustica</i>	Barn Swallow	Threatened	Threatened	Endangered	S2S3B	8	7.4 $\pm$ 0.0
A	<i>Cardellina canadensis</i>	Canada Warbler	Threatened	Threatened	Endangered	S3B	10	3.9 $\pm$ 7.0
A	<i>Dolichonyx oryzivorus</i>	Bobolink	Threatened	Threatened	Vulnerable	S3S4B	6	7.5 $\pm$ 7.0
A	<i>Euphagus carolinus</i>	Rusty Blackbird	Special Concern	Special Concern	Endangered	S2B	5	3.9 $\pm$ 7.0
A	<i>Chordeiles minor</i>	Common Nighthawk	Special Concern	Threatened	Threatened	S2B	9	3.9 $\pm$ 7.0
A	<i>Contopus cooperi</i>	Olive-sided Flycatcher	Special Concern	Threatened	Threatened	S2B	17	3.9 $\pm$ 7.0
A	<i>Contopus virens</i>	Eastern Wood-Pewee	Special Concern	Special Concern	Vulnerable	S3S4B	10	3.9 $\pm$ 7.0
A	<i>Coccothraustes vespertinus</i>	Evening Grosbeak	Special Concern	Special Concern	Vulnerable	S3S4B,S3N	9	3.9 $\pm$ 7.0
A	<i>Chrysemys picta picta</i>	Eastern Painted Turtle	Special Concern			S4S5	2	5.2 $\pm$ 0.0
A	<i>Accipiter gentilis</i>	Northern Goshawk	Not At Risk			S3S4	3	3.9 $\pm$ 7.0
A	<i>Circus hudsonius</i>	Northern Harrier	Not At Risk			S3S4B	2	7.5 $\pm$ 7.0
A	<i>Ammodramus nelsoni</i>	Nelson's Sparrow	Not At Risk			S3S4B	1	7.5 $\pm$ 7.0
A	<i>Alces americanus</i>	Moose			Endangered	S1	1	2.4 $\pm$ 0.0
A	<i>Passerina cyanea</i>	Indigo Bunting				S1?B	1	7.9 $\pm$ 7.0
A	<i>Piranga olivacea</i>	Scarlet Tanager				S2B	1	7.5 $\pm$ 7.0
A	<i>Molothrus ater</i>	Brown-headed Cowbird				S2B	1	7.5 $\pm$ 7.0
A	<i>Spinus pinus</i>	Pine Siskin				S2S3	3	3.9 $\pm$ 7.0
A	<i>Petrochelidon pyrrhonota</i>	Cliff Swallow				S2S3B	1	7.9 $\pm$ 7.0
A	<i>Pheucticus ludovicianus</i>	Rose-breasted Grosbeak				S2S3B	3	3.9 $\pm$ 7.0
A	<i>Icterus galbula</i>	Baltimore Oriole				S2S3B	1	7.5 $\pm$ 7.0
A	<i>Perisoreus canadensis</i>	Canada Jay				S3	5	3.9 $\pm$ 7.0
A	<i>Poecile hudsonicus</i>	Boreal Chickadee				S3	4	3.9 $\pm$ 7.0
A	<i>Sitta canadensis</i>	Red-breasted Nuthatch				S3	10	3.9 $\pm$ 7.0
A	<i>Falco sparverius</i>	American Kestrel				S3B	5	3.9 $\pm$ 7.0

	<b>Scientific Name</b>	<b>Common Name</b>	<b>COSEWIC</b>	<b>SARA</b>	<b>Prov Legal Prot</b>	<b>Prov Rarity Rank</b>	<b># recs</b>	<b>Distance (km)</b>
A	<i>Charadrius vociferus</i>	Killdeer				S3B	4	3.9 ± 7.0
A	<i>Gallinago delicata</i>	Wilson's Snipe				S3B	7	3.9 ± 7.0
A	<i>Tyrannus tyrannus</i>	Eastern Kingbird				S3B	4	3.9 ± 7.0
A	<i>Dumetella carolinensis</i>	Gray Catbird				S3B	4	7.2 ± 0.0
A	<i>Picoides arcticus</i>	Black-backed Woodpecker				S3S4	3	3.9 ± 7.0
A	<i>Loxia curvirostra</i>	Red Crossbill				S3S4	1	7.5 ± 7.0
A	<i>Actitis macularius</i>	Spotted Sandpiper				S3S4B	9	3.9 ± 7.0
A	<i>Empidonax flaviventris</i>	Yellow-bellied Flycatcher				S3S4B	5	3.9 ± 7.0
A	<i>Regulus calendula</i>	Ruby-crowned Kinglet				S3S4B	13	3.9 ± 7.0
A	<i>Catharus fuscescens</i>	Veery				S3S4B	6	3.9 ± 7.0
A	<i>Catharus ustulatus</i>	Swainson's Thrush				S3S4B	5	3.9 ± 7.0
A	<i>Setophaga castanea</i>	Bay-breasted Warbler				S3S4B	1	7.9 ± 7.0
I	<i>Amblyscirtes hegon</i>	Pepper and Salt Skipper				S2S3	1	7.5 ± 7.0
I	<i>Cupido comyntas</i>	Eastern Tailed Blue				S3?	1	7.5 ± 3.0
I	<i>Erynnis juvenalis</i>	Juvenal's Duskywing				S3S4	1	7.5 ± 7.0

### 4.3 LOCATION SENSITIVE SPECIES

The Department of Natural Resources in each Maritimes province considers a number of species “location sensitive”. Concern about exploitation of location-sensitive species precludes inclusion of precise coordinates in this report. Those intersecting your study area are indicated below with “YES”.

#### Nova Scotia

Scientific Name	Common Name	SARA	Prov Legal Prot	Known within the Study Site?
<i>Fraxinus nigra</i>	Black Ash		Threatened	No
<i>Emydoidea blandingii</i>	Blanding's Turtle - Nova Scotia pop.	Endangered	Vulnerable	No
<i>Glyptemys insculpta</i>	Wood Turtle	Threatened	Threatened	No
<i>Falco peregrinus pop. 1</i>	Peregrine Falcon - anatum/tundrius pop.	Special Concern	Vulnerable	No
<b>Bat hibernaculum or bat species occurrence</b>		<b>[Endangered]'</b>	<b>[Endangered]'</b>	<b>YES</b>

1 *Myotis lucifugus* (Little Brown Myotis), *Myotis septentrionalis* (Long-eared Myotis), and *Perimyotis subflavus* (Tri-colored Bat or Eastern Pipistrelle) are all Endangered under the Federal Species at Risk Act and the NS Endangered Species Act.

### 4.4 SOURCE BIBLIOGRAPHY

The recipient of these data shall acknowledge the AC CDC and the data sources listed below in any documents, reports, publications or presentations, in which this dataset makes a significant contribution.

# recs	CITATION
153	Lepage, D. 2014. Maritime Breeding Bird Atlas Database. Bird Studies Canada, Sackville NB, 407,838 recs.
31	Erskine, A.J. 1992. Maritime Breeding Bird Atlas Database. NS Museum & Nimbus Publ., Halifax, 82,125 recs.
16	Manthorne, A. 2014. MaritimesSwiftwatch Project database 2013-2014. Bird Studies Canada, Sackville NB, 326 recs.
5	Brazner, J. 2016. Nova Scotia Forested Wetland Bird Surveys. Nova Scotia Department of Lands and Forestry.
5	Munro, Marian K. Tracked lichen specimens, Nova Scotia Provincial Museum of Natural History Herbarium. Atlantic Canada Conservation Data Centre. 2019.
3	iNaturalist. 2020. iNaturalist Data Export 2020. iNaturalist.org and iNaturalist.ca, Web site: 128728 recs.
3	Klymko, J. 2018. Maritimes Butterfly Atlas database. Atlantic Canada Conservation Data Centre.
2	Neily, T.H. 2019. Tom Neily NS Bryophyte records (2009-2013). T.H. Neily, Atlantic Canada Conservation Data Centre, 1029 specimen records.
2	Nova Scotia Dept Natural Resources, Forestry Branch. 2007. Restricted & Limited Use Land Database (RLUL). , <a href="http://www.gov.ns.ca/natr/FORESTRY/rlul/downloadrlul.htm">http://www.gov.ns.ca/natr/FORESTRY/rlul/downloadrlul.htm</a> .
2	Pronych, G. & Wilson, A. 1993. Atlas of Rare Vascular Plants in Nova Scotia. Nova Scotia Museum, Halifax NS, I:1-168, II:169-331. 1446 recs.
1	Amirault, D.L. 1995. Atlantic Canada Conservation Area Database (ARCAD). Canadian Wildlife Service, Sackville.
1	Benjamin, L.K. (compiler). 2001. Significant Habitat & Species Database. Nova Scotia Dept of Natural Resources, 15 spp, 224 recs.
1	Benjamin, L.K. 2009. NSDNR Fieldwork & Consultants Reports. Nova Scotia Dept Natural Resources, 143 recs.
1	Bird Studies Canada. 2020. Important Bird and Biodiversity Areas in Canada database (Retrieved: 28 July, 2020 from <a href="https://www.ibacanada.com/explore.jsp?lang=EN">https://www.ibacanada.com/explore.jsp?lang=EN</a> ). IBA Program.
1	Cameron, R.P. 2012. Additional rare plant records, 2009. , 7 recs.
1	Churchill, J.L. 2018. Atlantic Canada Conservation Data Centre Fieldwork 2018. Atlantic Canada Conservation Data Centre, 907 recs.
1	Munro, Marian K. Nova Scotia Provincial Museum of Natural History Herbarium Database. Nova Scotia Provincial Museum of Natural History, Halifax, Nova Scotia. 2013.
1	Neily, T.H. & Pepper, C.; Toms, B. 2018. Nova Scotia lichen database [as of 2018-03]. Mersey Tobeatic Research Institute.
1	Newell, R.E. 2000. E.C. Smith Herbarium Database. Acadia University, Wolfville NS, 7139 recs.
1	Newell, R.E. 2005. E.C. Smith Digital Herbarium. E.C. Smith Herbarium, Irving Biodiversity Collection, Acadia University, Web site: <a href="http://luxor.acadiau.ca/library/Herbarium/project/">http://luxor.acadiau.ca/library/Herbarium/project/</a> . 582 recs.
1	Scott, F.W. 2002. Nova Scotia Herpetofauna Atlas Database. Acadia University, Wolfville NS, 8856 recs.

### 5.0 RARE SPECIES WITHIN 100 KM

A 100 km buffer around the study area contains 64,789 records of 162 vertebrate and 2029 records of 76 invertebrate fauna; 17459 records of 337 vascular and 2444 records of 216 nonvascular flora (attached: \*ob100km.xls).

Taxa within 100 km of the study site that are rare and/or endangered in the province in which the study site occurs (including “location-sensitive” species). All ranks correspond to the province in which the study site falls, even for out-of-province records. Taxa are listed in order of concern, beginning with legally listed taxa, with the number of observations per taxon and the distance in kilometers from study area centroid to the closest observation ( $\pm$  the precision, in km, of the record).

Taxonomic Group	Scientific Name	Common Name	COSEWIC	SARA	Prov Legal Prot	Prov Rarity Rank	# recs	Distance (km)	Prov
A	<i>Coregonus huntsmani</i>	Atlantic Whitefish	Endangered	Endangered	Endangered	S1	128	40.8 ± 1.0	NS
A	<i>Myotis lucifugus</i>	Little Brown Myotis	Endangered	Endangered	Endangered	S1	674	10.1 ± 0.0	NS
A	<i>Myotis septentrionalis</i>	Northern Long-eared Myotis	Endangered	Endangered	Endangered	S1	84	18.1 ± 0.0	NS
A	<i>Perimyotis subflavus</i>	Eastern Pipistrelle	Endangered	Endangered	Endangered	S1	183	17.0 ± 0.0	NS
A	<i>Emydoidea blandingii</i>	Blanding's Turtle - Nova Scotia pop.	Endangered	Endangered	Endangered	S1	9861	51.4 ± 0.0	NS
A	<i>Salmo salar pop. 1</i>	Atlantic Salmon - Inner Bay of Fundy pop.	Endangered	Endangered		S1	45	15.1 ± 0.0	NS
A	<i>Salmo salar pop. 6</i>	Atlantic Salmon - Nova Scotia Southern Upland pop.	Endangered			S1	24	25.0 ± 0.0	NS
A	<i>Charadrius melodus melodus</i>	Piping Plover melodus ssp	Endangered	Endangered	Endangered	S1B	1052	47.1 ± 0.0	NS
A	<i>Sterna dougallii</i>	Roseate Tern	Endangered	Endangered	Endangered	S1B	62	41.7 ± 0.0	NS
A	<i>Morone saxatilis pop. 2</i>	Striped Bass - Bay of Fundy pop.	Endangered			S1B	5	19.0 ± 1.0	NS
A	<i>Dermochelys coriacea (Atlantic pop.)</i>	Leatherback Sea Turtle - Atlantic pop.	Endangered	Endangered		S1S2N	3	35.4 ± 5.0	NS
A	<i>Calidris canutus rufa</i>	Red Knot rufa ssp	Endangered	Endangered	Endangered	S2M	959	17.2 ± 0.0	NS
A	<i>Antrostomus vociferus</i>	Eastern Whip-Poor-Will	Threatened	Threatened	Threatened	S1?B	16	14.9 ± 7.0	NS
A	<i>Catharus bicknelli</i>	Bicknell's Thrush	Threatened	Threatened	Endangered	S1S2B	6	67.9 ± 7.0	NS
A	<i>Limosa haemastica</i>	Hudsonian Godwit	Threatened			S1S2M	156	17.2 ± 0.0	NS
A	<i>Glyptemys insculpta</i>	Wood Turtle	Threatened	Threatened	Threatened	S2	1412	16.4 ± 5.0	NS
A	<i>Acipenser oxyrinchus</i>	Atlantic Sturgeon	Threatened			S2	7	21.0 ± 0.0	NS
A	<i>Anguilla rostrata</i>	American Eel	Threatened			S2	258	18.7 ± 0.0	NS
A	<i>Chaetura pelagica</i>	Chimney Swift	Threatened	Threatened	Endangered	S2B,S1M	520	3.9 ± 7.0	NS
A	<i>Thamnophis sauritus pop. 3</i>	Eastern Ribbonsnake - Atlantic pop.	Threatened	Threatened	Threatened	S2S3	2051	60.1 ± 0.0	NS
A	<i>Riparia riparia</i>	Bank Swallow	Threatened	Threatened	Endangered	S2S3B	1933	7.5 ± 7.0	NS
A	<i>Hirundo rustica</i>	Barn Swallow	Threatened	Threatened	Endangered	S2S3B	1015	7.4 ± 0.0	NS
A	<i>Cardellina canadensis</i>	Canada Warbler	Threatened	Threatened	Endangered	S3B	764	3.9 ± 7.0	NS
A	<i>Dolichonyx oryzivorus</i>	Bobolink	Threatened	Threatened	Vulnerable	S3S4B	1013	7.5 ± 7.0	NS
A	<i>Sturnella magna</i>	Eastern Meadowlark	Threatened	Threatened		SHB	6	23.7 ± 7.0	NS
A	<i>Ixobrychus exilis</i>	Least Bittern	Threatened	Threatened		SUB	6	96.5 ± 0.0	NB
A	<i>Hylocichla mustelina</i>	Wood Thrush	Threatened	Threatened		SUB	32	13.0 ± 7.0	NS
A	<i>Salmo salar pop. 12</i>	Atlantic Salmon - Gaspé - Southern Gulf of St Lawrence pop.	Special Concern			S1	5	87.5 ± 0.0	NS
A	<i>Passerculus sandwichensis princeps</i>	Savannah Sparrow princeps ssp	Special Concern	Special Concern		S1B	4	72.8 ± 0.0	NS
A	<i>Bucephala islandica (Eastern pop.)</i>	Barrow's Goldeneye - Eastern pop.	Special Concern	Special Concern		S1N	3	22.2 ± 2.0	NS
A	<i>Asio flammeus</i>	Short-eared Owl	Special Concern	Special Concern		S1S2B	19	22.8 ± 7.0	NS
A	<i>Euphagus carolinus</i>	Rusty Blackbird	Special Concern	Special Concern	Endangered	S2B	232	3.9 ± 7.0	NS
A	<i>Chordeiles minor</i>	Common Nighthawk	Special Concern	Threatened	Threatened	S2B	463	3.9 ± 7.0	NS
A	<i>Contopus cooperi</i>	Olive-sided Flycatcher	Special Concern	Threatened	Threatened	S2B	674	3.9 ± 7.0	NS
A	<i>Histrionicus histrionicus pop. 1</i>	Harlequin Duck - Eastern pop.	Special Concern	Special Concern	Endangered	S2N	38	50.4 ± 0.0	NS
A	<i>Balaenoptera physalus</i>	Fin Whale	Special Concern	Special Concern		S2S3	2	58.0 ± 0.0	NS
A	<i>Phalaropus lobatus</i>	Red-necked Phalarope	Special Concern	Special Concern		S2S3M	11	71.0 ± 0.0	NS
A	<i>Chelydra serpentina</i>	Snapping Turtle	Special Concern	Special Concern	Vulnerable	S3	420	11.4 ± 0.0	NS
A	<i>Contopus virens</i>	Eastern Wood-Pewee	Special Concern	Special Concern	Vulnerable	S3S4B	895	3.9 ± 7.0	NS
A	<i>Coccothraustes vespertinus</i>	Evening Grosbeak	Special Concern	Special Concern	Vulnerable	S3S4B,S3N	534	3.9 ± 7.0	NS
A	<i>Phocoena phocoena pop. 1</i>	Harbour Porpoise - Northwest Atlantic pop.	Special Concern			S4	7	25.3 ± 1.0	NS
A	<i>Podiceps auritus</i>	Horned Grebe	Special Concern	Special Concern		S4N	11	36.0 ± 0.0	NS
A	<i>Chrysemys picta picta</i>	Eastern Painted Turtle	Special Concern			S4S5	676	5.2 ± 0.0	NS
A	<i>Lynx canadensis</i>	Canadian Lynx	Not At Risk		Endangered	S1	8	70.3 ± 1.0	NS
A	<i>Accipiter cooperii</i>	Cooper's Hawk	Not At Risk			S1?B	4	48.6 ± 0.0	NS



Taxonomic Group	Scientific Name	Common Name	COSEWIC	SARA	Prov Legal Prot	Prov Rarity Rank	# recs	Distance (km)	Prov
A	<i>Fulica americana</i>	American Coot	Not At Risk			S1B	22	51.1 ± 0.0	NS
A	<i>Chlidonias niger</i>	Black Tern	Not At Risk			S1B	6	95.2 ± 0.0	NB
A	<i>Falco peregrinus pop. 1</i>	Peregrine Falcon - anatum/tundrius	Not At Risk	Special Concern	Vulnerable	S1B,SNAM	271	14.5 ± 7.0	NS
A	<i>Sorex dispar</i>	Long-tailed Shrew	Not At Risk			S2	3	37.6 ± 0.0	NS
A	<i>Aegolius funereus</i>	Boreal Owl	Not At Risk			S2?B	4	65.7 ± 7.0	NS
A	<i>Glaucomys volans</i>	Southern Flying Squirrel	Not At Risk			S2S3	10	10.4 ± 0.0	NS
A	<i>Globicephala melas</i>	Long-finned Pilot Whale	Not At Risk			S2S3	1	74.7 ± 0.0	NS
A	<i>Hemidactylum scutatum</i>	Four-toed Salamander	Not At Risk			S3	47	16.6 ± 0.0	NS
A	<i>Megaptera novaeangliae</i>	Humpback Whale (NW Atlantic pop.)	Not At Risk			S3	3	34.8 ± 0.0	NS
A	<i>Sterna hirundo</i>	Common Tern	Not At Risk			S3B	219	32.2 ± 7.0	NS
A	<i>Sialia sialis</i>	Eastern Bluebird	Not At Risk			S3B	117	18.1 ± 7.0	NS
A	<i>Buteo lagopus</i>	Rough-legged Hawk	Not At Risk			S3N	6	74.3 ± 0.0	NS
A	<i>Accipiter gentilis</i>	Northern Goshawk	Not At Risk			S3S4	142	3.9 ± 7.0	NS
A	<i>Lagenorhynchus acutus</i>	Atlantic White-sided Dolphin	Not At Risk			S3S4	5	38.0 ± 0.0	NS
A	<i>Circus hudsonius</i>	Northern Harrier	Not At Risk			S3S4B	315	7.5 ± 7.0	NS
A	<i>Ammodramus nelsoni</i>	Nelson's Sparrow	Not At Risk			S3S4B	154	7.5 ± 7.0	NS
A	<i>Morone saxatilis</i>	Striped Bass	E,SC			S2S3	9	17.0 ± 0.0	NS
A	<i>Gadus morhua</i>	Atlantic Cod	E,SC,DD			SNR	2	53.9 ± 0.0	NS
A	<i>Odobenus rosmarus pop. 5</i>	Atlantic Walrus - Nova Scotia-Newfoundland-Gulf of St. Lawrence population (DU3)	X			SX	1	98.3 ± 5.0	NS
A	<i>Martes americana</i>	American Marten			Endangered	S1	15	73.0 ± 0.0	NS
A	<i>Alces americanus</i>	Moose			Endangered	S1	38	2.4 ± 0.0	NS
A	<i>Picoides dorsalis</i>	American Three-toed Woodpecker				S1?	2	95.5 ± 11.0	NB
A	<i>Passerina cyanea</i>	Indigo Bunting				S1?B	43	7.9 ± 7.0	NS
A	<i>Uria aalge</i>	Common Murre				S1?B,S5N	1	78.1 ± 0.0	NS
A	<i>Anas acuta</i>	Northern Pintail				S1B	47	18.8 ± 7.0	NS
A	<i>Oxyura jamaicensis</i>	Ruddy Duck				S1B	9	70.0 ± 0.0	NS
A	<i>Gallinula galeata</i>	Common Gallinule				S1B	15	15.4 ± 7.0	NS
A	<i>Myiarchus crinitus</i>	Great Crested Flycatcher				S1B	40	13.0 ± 7.0	NS
A	<i>Cistothorus palustris</i>	Marsh Wren				S1B	14	67.4 ± 7.0	NS
A	<i>Mimus polyglottos</i>	Northern Mockingbird				S1B	63	14.5 ± 7.0	NS
A	<i>Toxostoma rufum</i>	Brown Thrasher				S1B	23	26.1 ± 7.0	NS
A	<i>Vireo gilvus</i>	Warbling Vireo				S1B	21	21.3 ± 0.0	NS
A	<i>Setophaga pinus</i>	Pine Warbler				S1B	35	21.4 ± 0.0	NS
A	<i>Calidris minutilla</i>	Least Sandpiper				S1B,S3M	1882	16.6 ± 0.0	NS
A	<i>Charadrius semipalmatus</i>	Semipalmated Plover				S1B,S3S4M	2496	16.6 ± 0.0	NS
A	<i>Vespertilionidae sp.</i>	bat species				S1S2	420	7.5 ± 0.0	NS
A	<i>Lasiurus borealis</i>	Eastern Red Bat				S1S2B,S1M	6	19.1 ± 0.0	NS
A	<i>Lasiurus cinereus</i>	Hoary Bat				S1S2B,S1M	63	17.0 ± 0.0	NS
A	<i>Pluvialis dominica</i>	American Golden-Plover				S1S2M	309	16.6 ± 0.0	NS
A	<i>Vireo philadelphicus</i>	Philadelphia Vireo				S2?B	23	48.7 ± 0.0	NS
A	<i>Spatula clypeata</i>	Northern Shoveler				S2B	111	17.1 ± 0.0	NS
A	<i>Mareca strepera</i>	Gadwall				S2B	124	13.2 ± 7.0	NS
A	<i>Empidonax traillii</i>	Willow Flycatcher				S2B	65	19.1 ± 0.0	NS
A	<i>Setophaga tigrina</i>	Cape May Warbler				S2B	137	13.0 ± 7.0	NS
A	<i>Piranga olivacea</i>	Scarlet Tanager				S2B	54	7.5 ± 7.0	NS
A	<i>Poocetes gramineus</i>	Vesper Sparrow				S2B	60	23.7 ± 7.0	NS
A	<i>Molothrus ater</i>	Brown-headed Cowbird				S2B	199	7.5 ± 7.0	NS
A	<i>Alca torda</i>	Razorbill				S2B,S4N	17	59.9 ± 7.0	NS
A	<i>Bucephala clangula</i>	Common Goldeneye				S2B,S5N	128	21.2 ± 11.0	NS
A	<i>Branta bernicla</i>	Brant				S2M	13	22.5 ± 0.0	NS
A	<i>Phalacrocorax carbo</i>	Great Cormorant				S2S3	38	36.9 ± 8.0	NS
A	<i>Asio otus</i>	Long-eared Owl				S2S3	27	22.8 ± 7.0	NS

Taxonomic Group	Scientific Name	Common Name	COSEWIC	SARA	Prov Legal Prot	Prov Rarity Rank	# recs	Distance (km)	Prov
A	<i>Spinus pinus</i>	Pine Siskin				S2S3	447	3.9 ± 7.0	NS
A	<i>Cathartes aura</i>	Turkey Vulture				S2S3B	130	19.9 ± 0.0	NS
A	<i>Rallus limicola</i>	Virginia Rail				S2S3B	61	24.1 ± 7.0	NS
A	<i>Tringa semipalmata</i>	Willet				S2S3B	1502	16.4 ± 0.0	NS
A	<i>Petrochelidon pyrrhonota</i>	Cliff Swallow				S2S3B	284	7.9 ± 7.0	NS
A	<i>Pheucticus ludovicianus</i>	Rose-breasted Grosbeak				S2S3B	413	3.9 ± 7.0	NS
A	<i>Icterus galbula</i>	Baltimore Oriole				S2S3B	100	7.5 ± 7.0	NS
A	<i>Pinicola enucleator</i>	Pine Grosbeak				S2S3B,S5N	127	11.8 ± 0.0	NS
A	<i>Numenius phaeopus hudsonicus</i>	Hudsonian Whimbrel				S2S3M	359	24.4 ± 0.0	NS
A	<i>Calidris melanotos</i>	Pectoral Sandpiper				S2S3M	417	17.2 ± 0.0	NS
A	<i>Phalaropus fulicarius</i>	Red Phalarope				S2S3M	6	74.0 ± 0.0	NS
A	<i>Perisoreus canadensis</i>	Canada Jay				S3	504	3.9 ± 7.0	NS
A	<i>Poecile hudsonicus</i>	Boreal Chickadee				S3	452	3.9 ± 7.0	NS
A	<i>Sitta canadensis</i>	Red-breasted Nuthatch				S3	1272	3.9 ± 7.0	NS
A	<i>Alosa pseudoharengus</i>	Alewife				S3	18	19.3 ± 0.0	NS
A	<i>Salvelinus fontinalis</i>	Brook Trout				S3	61	11.4 ± 0.0	NS
A	<i>Salvelinus namaycush</i>	Lake Trout				S3	1	76.6 ± 0.0	NS
A	<i>Menidia menidia</i>	Atlantic Silverside				S3	1	22.6 ± 0.0	NS
A	<i>Sorex maritimensis</i>	Maritime Shrew				S3	1	88.1 ± 0.0	NS
A	<i>Synaptomys cooperi</i>	Southern Bog Lemming				S3	9	37.6 ± 0.0	NS
A	<i>Pekania pennanti</i>	Fisher				S3	12	18.1 ± 0.0	NS
A	<i>Calidris maritima</i>	Purple Sandpiper				S3?N	234	18.4 ± 10.0	NS
A	<i>Calcarius lapponicus</i>	Lapland Longspur				S3?N	3	59.6 ± 0.0	NS
A	<i>Falco sparverius</i>	American Kestrel				S3B	307	3.9 ± 7.0	NS
A	<i>Charadrius vociferus</i>	Killdeer				S3B	686	3.9 ± 7.0	NS
A	<i>Gallinago delicata</i>	Wilson's Snipe				S3B	520	3.9 ± 7.0	NS
A	<i>Sterna paradisaea</i>	Arctic Tern				S3B	52	38.5 ± 7.0	NS
A	<i>Coccyzus erythrophthalmus</i>	Black-billed Cuckoo				S3B	69	22.8 ± 7.0	NS
A	<i>Tyrannus tyrannus</i>	Eastern Kingbird				S3B	287	3.9 ± 7.0	NS
A	<i>Dumetella carolinensis</i>	Gray Catbird				S3B	505	7.2 ± 0.0	NS
A	<i>Cardellina pusilla</i>	Wilson's Warbler				S3B	102	18.8 ± 7.0	NS
A	<i>Tringa melanoleuca</i>	Greater Yellowlegs				S3B,S3S4M	2369	16.4 ± 0.0	NS
A	<i>Oceanodroma leucorhoa</i>	Leach's Storm-Petrel				S3B,S5M	23	43.3 ± 0.0	NS
A	<i>Rissa tridactyla</i>	Black-legged Kittiwake				S3B,S5N	9	59.9 ± 7.0	NS
A	<i>Fratercula arctica</i>	Atlantic Puffin				S3B,S5N	22	51.6 ± 0.0	NS
A	<i>Pluvialis squatarola</i>	Black-bellied Plover				S3M	2632	16.6 ± 0.0	NS
A	<i>Tringa flavipes</i>	Lesser Yellowlegs				S3M	1128	17.2 ± 0.0	NS
A	<i>Arenaria interpres</i>	Ruddy Turnstone				S3M	974	17.2 ± 0.0	NS
A	<i>Calidris pusilla</i>	Semipalmated Sandpiper				S3M	2420	16.6 ± 0.0	NS
A	<i>Calidris fuscicollis</i>	White-rumped Sandpiper				S3M	1459	17.2 ± 0.0	NS
A	<i>Limnodromus griseus</i>	Short-billed Dowitcher				S3M	1682	16.6 ± 0.0	NS
A	<i>Calidris alba</i>	Sanderling				S3M,S2N	2245	16.6 ± 0.0	NS
A	<i>Chroicocephalus ridibundus</i>	Black-headed Gull				S3N	7	71.1 ± 0.0	NS
A	<i>Somateria mollissima</i>	Common Eider				S3S4	514	23.3 ± 0.0	NS
A	<i>Picoides arcticus</i>	Black-backed Woodpecker				S3S4	116	3.9 ± 7.0	NS
A	<i>Loxia curvirostra</i>	Red Crossbill				S3S4	240	7.5 ± 7.0	NS
A	<i>Botaurus lentiginosus</i>	American Bittern				S3S4B	286	10.2 ± 7.0	NS
A	<i>Spatula discors</i>	Blue-winged Teal				S3S4B	198	14.5 ± 7.0	NS
A	<i>Actitis macularius</i>	Spotted Sandpiper				S3S4B	931	3.9 ± 7.0	NS
A	<i>Empidonax flaviventris</i>	Yellow-bellied Flycatcher				S3S4B	484	3.9 ± 7.0	NS
A	<i>Regulus calendula</i>	Ruby-crowned Kinglet				S3S4B	997	3.9 ± 7.0	NS
A	<i>Catharus fuscescens</i>	Veery				S3S4B	654	3.9 ± 7.0	NS
A	<i>Catharus ustulatus</i>	Swainson's Thrush				S3S4B	1137	3.9 ± 7.0	NS
A	<i>Oreothlypis peregrina</i>	Tennessee Warbler				S3S4B	283	13.0 ± 7.0	NS
A	<i>Setophaga castanea</i>	Bay-breasted Warbler				S3S4B	389	7.9 ± 7.0	NS
A	<i>Setophaga striata</i>	Blackpoll Warbler				S3S4B	96	17.7 ± 0.0	NS
A	<i>Passerella iliaca</i>	Fox Sparrow				S3S4B	71	22.5 ± 0.0	NS

Taxonomic Group	Scientific Name	Common Name	COSEWIC	SARA	Prov Legal Prot	Prov Rarity Rank	# recs	Distance (km)	Prov
A	<i>Mergus serrator</i>	Red-breasted Merganser				S3S4B,S5N	143	21.2 ± 7.0	NS
A	<i>Bucephala albeola</i>	Bufflehead				S3S4N	84	25.5 ± 0.0	NS
A	<i>Lanius borealis</i>	Northern Shrike				S3S4N	35	61.8 ± 0.0	NS
A	<i>Leucophaeus atricilla</i>	Laughing Gull				SHB	10	36.0 ± 0.0	NS
A	<i>Progne subis</i>	Purple Martin				SHB	7	54.2 ± 7.0	NS
A	<i>Eremophila alpestris</i>	Horned Lark				SHB,S4S5N	18	24.9 ± 0.0	NS
A	<i>Morus bassanus</i>	Northern Gannet				SHB,S5M	26	47.5 ± 0.0	NS
A	<i>Aythya americana</i>	Redhead				SHB,SNAM	2	63.4 ± 0.0	NS
I	<i>Epeoloides pilosula</i>	Macropis Cuckoo Bee	Endangered	Endangered	Endangered	S1	2	61.4 ± 5.0	NS
I	<i>Gomphus ventricosus</i>	Skillet Clubtail	Endangered	Endangered		S1	2	33.6 ± 1.0	NS
I	<i>Danaus plexippus</i>	Monarch	Endangered	Special Concern	Endangered	S2B	435	16.6 ± 0.0	NS
I	<i>Danaus plexippus plexippus</i>	Monarch	Endangered	Special Concern		S2B	2	22.8 ± 0.0	NS
I	<i>Barnea truncata</i>	Atlantic Mud-piddock	Threatened	Threatened		S1	1	68.7 ± 1.0	NS
I	<i>Alasmidonta varicosa</i>	Brook Floater	Special Concern	Special Concern	Threatened	S1S2	6	55.3 ± 0.0	NS
I	<i>Bombus terricola</i>	Yellow-banded Bumblebee	Special Concern	Special Concern	Vulnerable	S3	72	21.9 ± 0.0	NS
I	<i>Cicindela formosa</i>	Big Sand Tiger Beetle				S1	1	23.6 ± 1.0	NS
I	<i>Satyrium acadica</i>	Acadian Hairstreak				S1	5	76.3 ± 2.0	NS
I	<i>Erora laeta</i>	Early Hairstreak				S1	1	59.0 ± 1.0	NS
I	<i>Ophiogomphus anomalus</i>	Extra-Striped Snaketail				S1	8	83.7 ± 0.0	NS
I	<i>Somatochlora brevicincta</i>	Quebec Emerald				S1	2	79.7 ± 0.0	NS
I	<i>Leptodea ochracea</i>	Tidewater Mucket				S1	11	68.6 ± 1.0	NS
I	<i>Strophitus undulatus</i>	Creeper				S1	6	96.1 ± 0.0	NS
I	<i>Chlosyne nycteis</i>	Silvery Checkerspot				S1?	4	95.1 ± 2.0	NS
I	<i>Polygonia comma</i>	Eastern Comma				S1?	19	17.9 ± 0.0	NS
I	<i>Polygonia satyrus</i>	Satyr Comma				S1?	7	15.8 ± 2.0	NS
I	<i>Strymon melinus</i>	Grey Hairstreak				S1S2	16	11.2 ± 0.0	NS
I	<i>Nymphalis l-album</i>	Compton Tortoiseshell				S1S2	22	35.6 ± 2.0	NS
I	<i>Somatochlora kennedyi</i>	Kennedy's Emerald				S1S2	9	33.6 ± 1.0	NS
I	<i>Coenagrion resolutum</i>	Taiga Bluet				S1S2	9	55.8 ± 1.0	NS
I	<i>Stylurus scudderi</i>	Zebra Clubtail				S1S2	9	30.3 ± 0.0	NS
I	<i>Lycaena hyllus</i>	Bronze Copper				S2	55	25.5 ± 1.0	NS
I	<i>Satyrium calanus</i>	Banded Hairstreak				S2	66	22.2 ± 0.0	NS
I	<i>Boloria chariclea</i>	Arctic Fritillary				S2	2	54.2 ± 2.0	NS
I	<i>Aglais milberti</i>	Milbert's Tortoiseshell				S2	21	31.2 ± 1.0	NS
I	<i>Aglais milberti milberti</i>	Milbert's Tortoise Shell				S2	1	97.1 ± 0.0	NB
I	<i>Epithea princeps</i>	Prince Baskettail				S2	23	46.0 ± 1.0	NS
I	<i>Somatochlora williamsoni</i>	Williamson's Emerald				S2	2	93.2 ± 0.0	NB
I	<i>Williamsonia fletcheri</i>	Ebony Boghaunter				S2	4	83.6 ± 0.0	NS
I	<i>Enallagma signatum</i>	Orange Bluet				S2	14	36.2 ± 0.0	NS
I	<i>Margaritifera margaritifera</i>	Eastern Pearlshell				S2	97	54.9 ± 0.0	NS
I	<i>Pantala hymenaea</i>	Spot-Winged Glider				S2?B	9	63.1 ± 1.0	NS
I	<i>Thorybes pylades</i>	Northern Cloudywing				S2S3	5	79.4 ± 2.0	NS
I	<i>Amblyscirtes hegon</i>	Pepper and Salt Skipper				S2S3	25	7.5 ± 7.0	NS
I	<i>Satyrium liparops</i>	Striped Hairstreak				S2S3	31	22.5 ± 2.0	NS
I	<i>Euphydryas phaeton</i>	Baltimore Checkerspot				S2S3	29	16.2 ± 2.0	NS
I	<i>Gomphus descriptus</i>	Harpoon Clubtail				S2S3	3	95.7 ± 0.0	NS
I	<i>Ophiogomphus aspersus</i>	Brook Snaketail				S2S3	6	22.6 ± 0.0	NS
I	<i>Ophiogomphus mainensis</i>	Maine Snaketail				S2S3	11	57.6 ± 0.0	NS
I	<i>Ophiogomphus rupinsulensis</i>	Rusty Snaketail				S2S3	32	22.6 ± 0.0	NS
I	<i>Somatochlora forcipata</i>	Forcinate Emerald				S2S3	8	36.8 ± 1.0	NS
I	<i>Somatochlora franklini</i>	Delicate Emerald				S2S3	5	33.6 ± 1.0	NS
I	<i>Erythrodiplax berenice</i>	Seaside Dragonlet				S2S3	3	48.8 ± 0.0	NS
I	<i>Enallagma vesperum</i>	Vesper Bluet				S2S3	17	46.0 ± 1.0	NS
I	<i>Alasmidonta undulata</i>	Triangle Floater				S2S3	30	40.8 ± 1.0	NS
I	<i>Strophiona nitens</i>	a Longhorned Beetle				S3	2	50.8 ± 0.0	NS
I	<i>Hippodamia parenthesis</i>	Parenthesis Lady Beetle				S3	3	50.4 ± 0.0	NS
I	<i>Naemia seriata</i>	a Ladybird beetle				S3	26	22.4 ± 0.0	NS
I	<i>Chilocorus stigma</i>	Twice-stabbed Lady Beetle				S3	10	36.9 ± 0.0	NS

Taxonomic Group	Scientific Name	Common Name	COSEWIC	SARA	Prov Legal Prot	Prov Rarity Rank	# recs	Distance (km)	Prov
I	<i>Myzia pullata</i>	Streaked Lady Beetle				S3	1	93.4 ± 0.0	NB
I	<i>Trachysida aspera</i>	a Longhorned Beetle				S3	2	62.0 ± 0.0	NS
I	<i>Dicerca tenebrosa</i>	Dark Jewel Beetle				S3	2	74.0 ± 0.0	NS
I	<i>Astylopsis sexguttata</i>	A Longhorned Beetle				S3	1	54.1 ± 0.0	NS
I	<i>Callophrys henrici</i>	Henry's Elfin				S3	40	26.0 ± 0.0	NS
I	<i>Callophrys lanoraieensis</i>	Bog Elfin				S3	19	11.2 ± 0.0	NS
I	<i>Speyeria aphrodite</i>	Aphrodite Fritillary				S3	48	16.6 ± 1.0	NS
I	<i>Polygonia faunus</i>	Green Comma				S3	20	36.6 ± 2.0	NS
I	<i>Megisto cymela</i>	Little Wood-satyr				S3	14	26.5 ± 0.0	NS
I	<i>Oeneis jutta</i>	Jutta Arctic				S3	23	33.7 ± 2.0	NS
I	<i>Aeshna clepsydra</i>	Mottled Darner				S3	30	47.0 ± 1.0	NS
I	<i>Aeshna constricta</i>	Lance-Tipped Darner				S3	28	21.4 ± 1.0	NS
I	<i>Boyeria graefiana</i>	Ocellated Darner				S3	16	28.1 ± 1.0	NS
I	<i>Gomphaeschna furcillata</i>	Harlequin Darner				S3	34	21.1 ± 0.0	NS
I	<i>Somatochlora tenebrosa</i>	Clamp-Tipped Emerald				S3	29	33.6 ± 1.0	NS
I	<i>Nannothemis bella</i>	Elfin Skimmer				S3	33	11.9 ± 0.0	NS
I	<i>Sympetrum danae</i>	Black Meadowhawk				S3	1	89.7 ± 0.0	NS
I	<i>Enallagma vernale</i>	Vernal Bluet				S3	5	30.4 ± 1.0	NS
I	<i>Amphiagrion saucium</i>	Eastern Red Damsel				S3	3	94.1 ± 1.0	NS
I	<i>Cupido comyntas</i>	Eastern Tailed Blue				S3?	27	7.5 ± 3.0	NS
I	<i>Polygonia interrogationis</i>	Question Mark				S3B	195	14.2 ± 0.0	NS
I	<i>Erynnis juvenalis</i>	Juvenal's Duskywing				S3S4	140	7.5 ± 7.0	NS
I	<i>Amblyscirtes vialis</i>	Common Roadside-Skipper				S3S4	43	37.4 ± 2.0	NS
I	<i>Polygonia progne</i>	Grey Comma				S3S4	47	25.5 ± 0.0	NS
I	<i>Lanthus parvulus</i>	Northern Pygmy Clubtail				S3S4	9	78.0 ± 0.0	NS
I	<i>Lampsilis radiata</i>	Eastern Lamprussel				S3S4	30	68.6 ± 1.0	NS
N	<i>Erioderma pedicellatum</i> (Atlantic pop.)	Boreal Felt Lichen - Atlantic pop.	Endangered	Endangered	Endangered	S1	48	31.7 ± 0.0	NS
N	<i>Erioderma mollissimum</i>	Graceful Felt Lichen	Endangered	Endangered	Endangered	S1S2	9	43.1 ± 0.0	NS
N	<i>Peltigera hydrothyria</i>	Eastern Waterfan	Threatened	Threatened	Threatened	S1	342	63.9 ± 3.0	NS
N	<i>Pannaria lurida</i>	Wrinkled Shingle Lichen	Threatened	Threatened	Threatened	S1S2	153	8.1 ± 13.0	NS
N	<i>Fuscopannaria leucosticta</i>	White-rimmed Shingle Lichen	Threatened			S2S3	52	26.4 ± 6.0	NS
N	<i>Anzia colpodes</i>	Black-foam Lichen	Threatened	Threatened	Threatened	S3	60	18.9 ± 0.0	NS
N	<i>Sclerophora peronella</i> (Atlantic pop.)	Frosted Glass-whiskers (Atlantic population)	Special Concern	Special Concern		S1?	20	22.3 ± 0.0	NS
N	<i>Pectenia plumbea</i>	Blue Felt Lichen	Special Concern	Special Concern	Vulnerable	S3	88	22.2 ± 0.0	NS
N	<i>Fissidens exilis</i>	Pygmy Pocket Moss	Not At Risk			S1S2	15	18.6 ± 0.0	NS
N	<i>Pseudevernia cladonia</i>	Ghost Antler Lichen	Not At Risk			S2S3	20	41.1 ± 0.0	NS
N	<i>Aloina brevirostris</i>	Short-Beaked Rigid Screw Moss				S1	1	21.6 ± 2.0	NS
N	<i>Orthotrichum pallens</i>	Pale Bristle Moss				S1	1	92.1 ± 0.0	NS
N	<i>Umbilicaria vellea</i>	Grizzled Rocktripe Lichen				S1	2	40.4 ± 5.0	NS
N	<i>Usnea perplexans</i>	Powdered Beard Lichen				S1	1	30.2 ± 0.0	NS
N	<i>Leptogium azureum</i>	Blue Jellyskin Lichen				S1	1	54.1 ± 1.0	NS
N	<i>Leptogium dactylinum</i>	Brown-buttoned Jellyskin Lichen				S1	2	39.7 ± 0.0	NS
N	<i>Collema cristatum</i>	Fingered Tarpaper Lichen				S1	6	21.4 ± 0.0	NS
N	<i>Ephebe hispidula</i>	Dryside Rockshag Lichen				S1	1	71.4 ± 0.0	NS
N	<i>Ephebe perspinulosa</i>	Thread Lichen				S1	2	39.5 ± 1.0	NS
N	<i>Euopsis granatina</i>	Lesser Rockbud Lichen				S1	1	74.2 ± 1.0	NS
N	<i>Fuscopannaria praetermissa</i>	Moss Shingles Lichen				S1	1	17.0 ± 0.0	NS
N	<i>Leptogium schraderi</i>	Schrader's Jellyskin Lichen				S1	1	71.4 ± 0.0	NS
N	<i>Parmotrema perforatum</i>	Perforated Ruffle Lichen				S1	4	94.3 ± 0.0	NS
N	<i>Pseudevernia consocians</i>	Common Antler Lichen				S1	1	63.5 ± 0.0	NS
N	<i>Spilonema revertens</i>	Rock Hairball Lichen				S1	4	78.0 ± 0.0	NS
N	<i>Collema fuscovirens</i>	Crumpled Rock Tarpaper Lichen				S1	1	74.9 ± 0.0	NS

Taxonomic Group	Scientific Name	Common Name	COSEWIC	SARA	Prov Legal Prot	Prov Rarity Rank	# recs	Distance (km)	Prov
N	<i>Leptogium hibernicum</i>	Hibernia Jellyskin Lichen				S1	10	19.4 ± 0.0	NS
N	<i>Peltigera lepidophora</i>	Scaly Pelt Lichen				S1	3	18.2 ± 0.0	NS
N	<i>Bryoria nitidula</i>	Tundra Horsehair Lichen				S1	1	75.2 ± 2.0	NS
N	<i>Calypogeia neogaea</i>	Common Pouchwort				S1?	1	46.4 ± 0.0	NS
N	<i>Moerckia hibernica</i>	Irish Ruffwort				S1?	1	40.2 ± 0.0	NS
N	<i>Aloina rigida</i>	Aloe-Like Rigid Screw Moss				S1?	4	20.6 ± 0.0	NS
N	<i>Bryum muehlenbeckii</i>	Muehlenbeck's Bryum Moss				S1?	2	2.4 ± 0.0	NS
N	<i>Conardia compacta</i>	Coast Creeping Moss				S1?	2	53.6 ± 2.0	NS
N	<i>Tortula obtusifolia</i>	a Moss				S1?	2	95.2 ± 1.0	NS
N	<i>Didymodon tophaceus</i>	Olive Beard Moss				S1?	1	39.5 ± 0.0	NS
N	<i>Grimmia anodon</i>	Toothless Grimmia Moss				S1?	2	94.4 ± 3.0	NS
N	<i>Homomallium adnatum</i>	Adnate Hairy-gray Moss				S1?	1	95.0 ± 5.0	NS
N	<i>Paludella squarrosa</i>	Tufted Fen Moss				S1?	3	28.6 ± 0.0	NS
N	<i>Physcomitrium immersum</i>	a Moss				S1?	1	29.7 ± 0.0	NS
N	<i>Schistostega pennata</i>	Luminous Moss				S1?	1	36.8 ± 0.0	NS
N	<i>Timmia norvegica</i>	a moss				S1?	2	91.7 ± 0.0	NB
N	<i>Syntrichia ruralis</i>	a Moss				S1?	1	58.1 ± 0.0	NS
N	<i>Trichodon cylindricus</i>	Cylindric Hairy-teeth Moss				S1?	1	47.8 ± 3.0	NS
N	<i>Plagiomnium ellipticum</i>	Marsh Leafy Moss				S1?	1	53.5 ± 0.0	NS
N	<i>Collema crispum</i>	Crinkled Pulp Lichen				S1?	1	39.6 ± 0.0	NS
N	<i>Lichina confinis</i>	Marine Seaweed Lichen				S1?	2	75.0 ± 1.0	NS
N	<i>Polychidium muscicola</i>	Eyed Mossthorns Woollybear Lichen				S1?	5	55.1 ± 0.0	NS
N	<i>Parmeliella parvula</i>	Poor-man's Shingles Lichen				S1?	1	50.0 ± 0.0	NS
N	<i>Aulacomnium heterostichum</i>	One-sided Groove Moss				S1S2	3	21.7 ± 2.0	NS
N	<i>Brachythecium turgidum</i>	Thick Ragged Moss				S1S2	3	47.8 ± 3.0	NS
N	<i>Dicranoweisia crispula</i>	Mountain Thatch Moss				S1S2	1	95.6 ± 0.0	NB
N	<i>Didymodon rigidulus</i>	Rigid Screw Moss				S1S2	10	89.2 ± 0.0	NS
N	<i>Didymodon ferrugineus</i>	a moss				S1S2	1	91.9 ± 0.0	NB
N	<i>Hypnum pratense</i>	Meadow Plait Moss				S1S2	1	32.6 ± 3.0	NS
N	<i>Mnium thomsonii</i>	Thomson's Leafy Moss				S1S2	1	18.6 ± 2.0	NS
N	<i>Tortula acaulon</i>	Cuspidate Earth Moss				S1S2	1	34.2 ± 2.0	NS
N	<i>Plagiothecium latebricola</i>	Alder Silk Moss				S1S2	3	37.4 ± 5.0	NS
N	<i>Platydictya confervoides</i>	a Moss				S1S2	1	18.1 ± 0.0	NS
N	<i>Sematophyllum demissum</i>	a Moss				S1S2	2	51.1 ± 1.0	NS
N	<i>Sphagnum platyphyllum</i>	Flat-leaved Peat Moss				S1S2	3	57.4 ± 3.0	NS
N	<i>Tetradontium brownianum</i>	Little Georgia				S1S2	7	92.0 ± 0.0	NB
N	<i>Timmia megapolitana</i>	Metropolitan Timmia Moss				S1S2	3	57.8 ± 1.0	NS
N	<i>Tortula mucronifolia</i>	Mucronate Screw Moss				S1S2	2	42.4 ± 3.0	NS
N	<i>Cyрто-hypnum minutulum</i>	Tiny Cedar Moss				S1S2	1	92.2 ± 0.0	NS
N	<i>Bryohaplocladium microphyllum</i>	Tiny-leaved Haplocladium Moss				S1S2	2	78.0 ± 5.0	NS
N	<i>Collema bachmanianum</i>	Bachman's Tarpaper Lichen				S1S2	1	21.4 ± 0.0	NS
N	<i>Rhizoplaca subdiscrepans</i>	Scattered Rock-posy Lichen				S1S2	1	42.5 ± 1.0	NS
N	<i>Sticta limbata</i>	Powdered Moon Lichen				S1S2	7	37.3 ± 0.0	NS
N	<i>Candelaria concolor</i>	Elfin Candleflame Lichen				S1S2	4	62.9 ± 0.0	NS
N	<i>Peltigera malacea</i>	Veinless Pelt Lichen				S1S2	1	98.2 ± 1.0	NB
N	<i>Porella pinnata</i>	Pinnate Scalewort				S1S3	1	79.1 ± 0.0	NS
N	<i>Heterodermia galactophylla</i>	Branching Fringe Lichen				S1S3	1	43.1 ± 0.0	NS
N	<i>Melanelia culbersonii</i>	Appalachain Camouflage Lichen				S1S3	1	41.5 ± 0.0	NS
N	<i>Peltigera neckeri</i>	Black-saddle Pelt Lichen				S1S3	1	97.2 ± 0.0	NS
N	<i>Usnea chaetophora</i>	Articulated Beard Lichen				S1S3	1	68.9 ± 0.0	NS
N	<i>Stereocaulon grande</i>	Grand Foam Lichen				S1S3	1	90.0 ± 0.0	NS
N	<i>Stereocaulon intermedium</i>	Pacific Brain Foam Lichen				S1S3	9	48.5 ± 0.0	NS
N	<i>Cystocoleus ebeneus</i>	Rockgossamer Lichen				S2	3	52.1 ± 0.0	NS
N	<i>Nephroma resupinatum</i>	a lichen				S2	4	18.0 ± 0.0	NS
N	<i>Parmotrema reticulatum</i>	Netted Ruffle Lichen				S2	7	40.5 ± 13.0	NS



Taxonomic Group	Scientific Name	Common Name	COSEWIC	SARA	Prov Legal Prot	Prov Rarity Rank	# recs	Distance (km)	Prov
N	<i>Anacamptodon splachnoides</i>	a Moss				S2?	3	60.5 ± 30.0	NS
N	<i>Weissia muhlenbergiana</i>	a Moss				S2?	5	16.4 ± 5.0	NS
N	<i>Atrichum angustatum</i>	Lesser Smoothcap Moss				S2?	7	73.7 ± 5.0	NS
N	<i>Bryum algovicum</i>	a Moss				S2?	1	21.7 ± 2.0	NS
N	<i>Campylium polygamum</i>	a Moss				S2?	4	39.5 ± 0.0	NS
N	<i>Campylium radicale</i>	Long-stalked Fine Wet Moss				S2?	3	32.6 ± 3.0	NS
N	<i>Climacium americanum</i>	American Tree Moss				S2?	9	89.2 ± 0.0	NS
N	<i>Dicranum condensatum</i>	Condensed Broom Moss				S2?	5	32.6 ± 3.0	NS
N	<i>Ditrichum rhynchostegium</i>	a Moss				S2?	6	52.3 ± 1.0	NS
N	<i>Fissidens bushii</i>	Bush's Pocket Moss				S2?	5	63.0 ± 0.0	NS
N	<i>Fissidens taxifolius</i>	Yew-leaved Pocket Moss				S2?	8	16.4 ± 5.0	NS
N	<i>Fontinalis hypnoides</i>	a moss				S2?	1	92.6 ± 0.0	NS
N	<i>Fontinalis sullivantii</i>	a Moss				S2?	3	83.9 ± 0.0	NS
N	<i>Grimmia olneyi</i>	a Moss				S2?	10	89.1 ± 0.0	NS
N	<i>Grimmia anomala</i>	Mountain Forest Grimmia				S2?	1	37.2 ± 1.0	NS
N	<i>Hygrohypnum bestii</i>	Best's Brook Moss				S2?	2	64.0 ± 0.0	NS
N	<i>Kiaeria starkei</i>	Starke's Fork Moss				S2?	1	97.5 ± 10.0	NS
N	<i>Orthotrichum anomalum</i>	Anomalous Bristle Moss				S2?	5	12.5 ± 2.0	NS
N	<i>Philonotis marchica</i>	a Moss				S2?	1	89.2 ± 0.0	NS
N	<i>Physcomitrium collenchymatum</i>	a Moss				S2?	1	47.8 ± 0.0	NS
N	<i>Platydictya jungermannioides</i>	False Willow Moss				S2?	3	74.7 ± 0.0	NS
N	<i>Racomitrium affine</i>	a Moss				S2?	2	36.4 ± 2.0	NS
N	<i>Rhytidium rugosum</i>	Wrinkle-leaved Moss				S2?	1	91.7 ± 1.0	NB
N	<i>Saellania glaucescens</i>	Blue Dew Moss				S2?	2	95.6 ± 0.0	NB
N	<i>Seligeria donniana</i>	Donian Beardless Moss				S2?	1	99.0 ± 3.0	NS
N	<i>Sematophyllum marylandicum</i>	a Moss				S2?	3	54.4 ± 3.0	NS
N	<i>Sphagnum subnitens</i>	Lustrous Peat Moss				S2?	4	98.0 ± 0.0	NS
N	<i>Tetraplodon angustatus</i>	Toothed-leaved Nitrogen Moss				S2?	3	65.2 ± 0.0	NS
N	<i>Tortella fragilis</i>	Fragile Twisted Moss				S2?	1	91.7 ± 0.0	NB
N	<i>Anomobryum filiforme</i>	a moss				S2?	3	91.7 ± 1.0	NB
N	<i>Plagiomnium rostratum</i>	Long-beaked Leafy Moss				S2?	8	46.9 ± 2.0	NS
N	<i>Pseudotaxiphyllum distichaceum</i>	a Moss				S2?	2	74.8 ± 0.0	NS
N	<i>Raiiella scita</i>	Smaller Fern Moss				S2?	16	89.2 ± 0.0	NS
N	<i>Cyrtomnium hymenophylloides</i>	Short-pointed Lantern Moss				S2?	3	61.9 ± 5.0	NS
N	<i>Platylorella lescurii</i>	a Moss				S2?	9	30.9 ± 1.0	NS
N	<i>Phyliscum demangeonii</i>	Black Rock-wafer Lichen				S2?	5	6.6 ± 0.0	NS
N	<i>Usnea flavocardia</i>	Blood-splattered Beard Lichen				S2?	1	49.5 ± 4.0	NS
N	<i>Leptogium teretiusculum</i>	Beaded Jellyskin Lichen				S2?	17	10.8 ± 0.0	NS
N	<i>Rostania occultata</i>	Crusted Tarpaper Lichen				S2?	4	37.3 ± 0.0	NS
N	<i>Leptogium imbricatum</i>	Scaly Jellyskin Lichen				S2?	2	73.7 ± 0.0	NS
N	<i>Nephroma arcticum</i>	Arctic Kidney Lichen				S2?	1	99.7 ± 1.0	NB
N	<i>Placynthium flabellousum</i>	Scaly Ink Lichen				S2?	5	55.1 ± 0.0	NS
N	<i>Xanthoparmelia mougeotii</i>	Powdered Rock-shield Lichen				S2?	1	90.7 ± 0.0	NS
N	<i>Peltigera collina</i>	Tree Pelt Lichen				S2?	5	23.2 ± 2.0	NS
N	<i>Ephemerum serratum</i>	a Moss				S2S3	5	16.4 ± 5.0	NS
N	<i>Eurhynchium hians</i>	Light Beaked Moss				S2S3	7	21.5 ± 0.0	NS
N	<i>Platydictya subtilis</i>	Bark Willow Moss				S2S3	4	48.8 ± 0.0	NS
N	<i>Tortula truncata</i>	a Moss				S2S3	7	20.4 ± 0.0	NS
N	<i>Limprichtia revolvens</i>	a Moss				S2S3	2	28.6 ± 0.0	NS
N	<i>Collema leptaleum</i>	Crumpled Bat's Wing Lichen				S2S3	45	10.8 ± 0.0	NS

Taxonomic Group	Scientific Name	Common Name	COSEWIC	SARA	Prov Legal Prot	Prov Rarity Rank	# recs	Distance (km)	Prov
N	<i>Solorina saccata</i>	Woodland Owl Lichen				S2S3	14	21.1 ± 0.0	NS
N	<i>Ahtiana aurescens</i>	Eastern Candlewax Lichen				S2S3	12	6.5 ± 2.0	NS
N	<i>Usnocetraria oakesiana</i>	Yellow Band Lichen				S2S3	13	18.3 ± 0.0	NS
N	<i>Cladonia incrassata</i>	Powder-foot British Soldiers Lichen				S2S3	1	96.1 ± 3.0	NS
N	<i>Cladonia mateocyatha</i>	Mixed-up Pixie-cup				S2S3	4	5.4 ± 6.0	NS
N	<i>Cladonia parasitica</i>	Fence-rail Lichen				S2S3	3	43.7 ± 0.0	NS
N	<i>Hypotrachyna catawbiensis</i>	Powder-tipped Antler Lichen				S2S3	6	41.6 ± 0.0	NS
N	<i>Leptogium milligranum</i>	Stretched Jellyskin Lichen				S2S3	14	16.5 ± 0.0	NS
N	<i>Leptogium tenuissimum</i>	Birdnest Jellyskin Lichen				S2S3	5	18.2 ± 0.0	NS
N	<i>Melanohalea septentrionalis</i>	Northern Camouflage Lichen				S2S3	3	30.6 ± 0.0	NS
N	<i>Myelochroa aurulenta</i>	Powdery Axil-bristle Lichen				S2S3	6	19.6 ± 2.0	NS
N	<i>Parmelia fertilis</i>	Fertile Shield Lichen				S2S3	1	62.9 ± 0.0	NS
N	<i>Hypotrachyna minarum</i>	Hairless-spined Shield Lichen				S2S3	6	61.2 ± 0.0	NS
N	<i>Parmeliopsis ambigua</i>	Green Starburst Lichen				S2S3	2	19.7 ± 2.0	NS
N	<i>Racodium rupestre</i>	Rockhair Lichen				S2S3	3	46.9 ± 1.0	NS
N	<i>Umbilicaria polyphylla</i>	Petalled Rocktripe Lichen				S2S3	1	19.7 ± 2.0	NS
N	<i>Usnea cavernosa</i>	Pitted Beard Lichen				S2S3	2	29.9 ± 2.0	NS
N	<i>Usnea ceratina</i>	Warty Beard Lichen				S2S3	3	59.2 ± 0.0	NS
N	<i>Usnea mutabilis</i>	Bloody Beard Lichen				S2S3	1	30.1 ± 0.0	NS
N	<i>Usnea rubicunda</i>	Red Beard Lichen				S2S3	4	30.1 ± 0.0	NS
N	<i>Stereocaulon condensatum</i>	Granular Soil Foam Lichen				S2S3	2	39.6 ± 0.0	NS
N	<i>Physcia subtilis</i>	Slender Rosette Lichen				S2S3	1	90.0 ± 0.0	NS
N	<i>Cetraria arenaria</i>	Sand-loving Icelandmoss Lichen				S2S3	16	48.8 ± 0.0	NS
N	<i>Cladonia coccifera</i>	Eastern Boreal Pixie-cup Lichen				S2S3	3	48.5 ± 0.0	NS
N	<i>Cladonia deformis</i>	Lesser Sulphur-cup Lichen				S2S3	8	8.1 ± 4.0	NS
N	<i>Cladonia phyllophora</i>	Felt Lichen				S2S3	2	29.0 ± 4.0	NS
N	<i>Hypotrachyna afrorevoluta</i>	Pustulate Revolute Loop Lichen				S2S3	3	68.9 ± 1.0	NS
N	<i>Usnea flammea</i>	Coastal Bushy Beard Lichen				S2S3	2	72.9 ± 0.0	NS
N	<i>Ramalina thrausta</i>	Angelhair Ramalina Lichen				S3	6	86.1 ± 0.0	NS
N	<i>Collema tenax</i>	Soil Tarpaper Lichen				S3	8	21.5 ± 0.0	NS
N	<i>Collema nigrescens</i>	Blistered Tarpaper Lichen				S3	23	23.6 ± 0.0	NS
N	<i>Sticta fuliginosa</i>	Peppered Moon Lichen				S3	35	32.3 ± 0.0	NS
N	<i>Leptogium subtile</i>	Appressed Jellyskin Lichen				S3	20	17.8 ± 0.0	NS
N	<i>Fuscopannaria ahlneri</i>	Corrugated Shingles Lichen				S3	34	37.6 ± 0.0	NS
N	<i>Heterodermia speciosa</i>	Powdered Fringe Lichen				S3	42	10.8 ± 0.0	NS
N	<i>Heterodermia squamulosa</i>	Scaly Fringe Lichen				S3	57	44.0 ± 13.0	NS
N	<i>Leptogium corticola</i>	Blistered Jellyskin Lichen				S3	75	10.3 ± 0.0	NS
N	<i>Leptogium lichenooides</i>	Tattered Jellyskin Lichen				S3	28	18.2 ± 0.0	NS
N	<i>Nephroma bellum</i>	Naked Kidney Lichen				S3	4	49.5 ± 4.0	NS
N	<i>Placynthium nigrum</i>	Common Ink Lichen				S3	1	92.1 ± 1.0	NS
N	<i>Punctelia appalachensis</i>	Appalachian Speckleback Lichen				S3	94	32.7 ± 13.0	NS
N	<i>Moelleropsis nebulosa</i>	Blue-gray Moss Shingle Lichen				S3	11	25.9 ± 0.0	NS
N	<i>Usnea hirta</i>	Bristly Beard Lichen				S3	4	62.5 ± 0.0	NS
N	<i>Fuscopannaria soredata</i>	a Lichen				S3	4	43.5 ± 0.0	NS
N	<i>Ephebe lanata</i>	Waterside Rockshag Lichen				S3	4	83.6 ± 17.0	NS
N	<i>Usnea macaronesica</i>	Beard Lichen				S3	6	42.0 ± 1.0	NS
N	<i>Metzgeria conjugata</i>	Rock Veilwort				S3?	2	64.0 ± 0.0	NS
N	<i>Barbula convoluta</i>	Lesser Bird's-claw Beard Moss				S3?	3	18.1 ± 0.0	NS
N	<i>Calliergon giganteum</i>	Giant Spear Moss				S3?	3	26.1 ± 3.0	NS
N	<i>Drummondia prorepens</i>	a Moss				S3?	5	9.9 ± 5.0	NS

Taxonomic Group	Scientific Name	Common Name	COSEWIC	SARA	Prov Legal Prot	Prov Rarity Rank	# recs	Distance (km)	Prov
N	<i>Anomodon tristis</i>	a Moss				S3?	14	40.4 ± 0.0	NS
N	<i>Helodium blandowii</i>	Wetland-plume Moss				S3?	6	16.3 ± 3.0	NS
N	<i>Mnium stellare</i>	Star Leafy Moss				S3?	3	22.7 ± 0.0	NS
N	<i>Sphagnum riparium</i>	Streamside Peat Moss				S3?	2	62.6 ± 1.0	NS
N	<i>Phaeophyscia pusilloides</i>	Pompom-tipped Shadow Lichen				S3?	6	24.7 ± 0.0	NS
N	<i>Cladonia stygia</i>	Black-footed Reindeer Lichen				S3?	2	43.1 ± 0.0	NS
N	<i>Anomodon rugelii</i>	Rugel's Anomodon Moss				S3S4	9	40.4 ± 0.0	NS
N	<i>Dichelyma capillaceum</i>	Hairlike Dichelyma Moss				S3S4	9	23.3 ± 3.0	NS
N	<i>Dicranella varia</i>	a Moss				S3S4	3	43.0 ± 0.0	NS
N	<i>Dicranum leioneuron</i>	a Dicranum Moss				S3S4	1	55.3 ± 0.0	NS
N	<i>Encalypta procera</i>	Slender Extinguisher Moss				S3S4	6	91.7 ± 0.0	NB
N	<i>Myurella julacea</i>	Small Mouse-tail Moss				S3S4	3	78.0 ± 0.0	NS
N	<i>Splachnum ampullaceum</i>	Cruet Dung Moss				S3S4	4	72.9 ± 0.0	NS
N	<i>Thamnobryum alleghaniense</i>	a Moss				S3S4	16	21.7 ± 4.0	NS
N	<i>Schistidium agassizii</i>	Elf Bloom Moss				S3S4	3	37.2 ± 1.0	NS
N	<i>Hylocomiastrum pyrenaicum</i>	a Feather Moss				S3S4	5	62.6 ± 0.0	NS
N	<i>Arctoparmelia incurva</i>	Finger Ring Lichen				S3S4	64	44.6 ± 0.0	NS
N	<i>Hypogymnia vittata</i>	Slender Monk's Hood Lichen				S3S4	42	22.4 ± 0.0	NS
N	<i>Leptogium acadiense</i>	Acadian Jellyskin Lichen				S3S4	17	10.5 ± 0.0	NS
N	<i>Cladonia floerkeana</i>	Gritty British Soldiers Lichen				S3S4	4	13.6 ± 0.0	NS
N	<i>Vahlia leucophaea</i>	Shelter Shingle Lichen				S3S4	1	55.1 ± 0.0	NS
N	<i>Melanohalea olivacea</i>	Spotted Camouflage Lichen				S3S4	8	30.2 ± 0.0	NS
N	<i>Parmeliopsis hyperopta</i>	Gray Starburst Lichen				S3S4	1	72.9 ± 0.0	NS
N	<i>Parmotrema chinense</i>	Powdered Ruffle Lichen				S3S4	30	48.4 ± 0.0	NS
N	<i>Peltigera hymenina</i>	Cloudy Pelt Lichen				S3S4	1	75.2 ± 2.0	NS
N	<i>Physconia detersa</i>	Bottlebrush Frost Lichen				S3S4	17	17.9 ± 0.0	NS
N	<i>Sphaerophorus fragilis</i>	Fragile Coral Lichen				S3S4	6	54.0 ± 3.0	NS
N	<i>Coccocarpia palmicola</i>	Salted Shell Lichen				S3S4	95	6.5 ± 0.0	NS
N	<i>Physcia caesia</i>	Blue-gray Rosette Lichen				S3S4	3	40.8 ± 0.0	NS
N	<i>Physcia tenella</i>	Fringed Rosette Lichen				S3S4	4	64.4 ± 0.0	NS
N	<i>Anaptychia palmulata</i>	Shaggy Fringed Lichen				S3S4	84	11.1 ± 0.0	NS
N	<i>Bryoria pikei</i>	Pike's Horsehair Lichen				S3S4	10	36.7 ± 5.0	NS
N	<i>Evernia prunastri</i>	Valley Oakmoss Lichen				S3S4	20	3.9 ± 2.0	NS
N	<i>Dermatocarpon luridum</i>	Brookside Stippleback Lichen				S3S4	38	18.8 ± 0.0	NS
N	<i>Heterodermia neglecta</i>	Fringe Lichen				S3S4	70	20.6 ± 0.0	NS
P	<i>Rhynchospora macrostachya</i>	Tall Beakrush	Endangered	Endangered	Endangered	S1	57	71.3 ± 0.0	NS
P	<i>Clethra alnifolia</i>	Coast Pepper-Bush	Endangered	Threatened	Vulnerable	S1	174	68.1 ± 0.0	NS
P	<i>Fraxinus nigra</i>	Black Ash	Threatened		Threatened	S1S2	306	17.7 ± 0.0	NS
P	<i>Hydrocotyle umbellata</i>	Water Pennywort	Special Concern	Special Concern	Endangered	S1	71	92.4 ± 0.0	NS
P	<i>Lilaeopsis chinensis</i>	Eastern Lilaeopsis	Special Concern	Special Concern	Vulnerable	S2	150	60.1 ± 0.0	NS
P	<i>Eleocharis tuberculosa</i>	Tuberclad Spike-rush	Special Concern	Special Concern	Vulnerable	S2	1	94.7 ± 0.0	NS
P	<i>Lachnanthes caroliniana</i>	Redroot	Special Concern	Special Concern	Vulnerable	S2	1470	70.7 ± 0.0	NS
P	<i>Lophiola aurea</i>	Goldencrest	Special Concern	Special Concern	Vulnerable	S2	777	57.5 ± 13.0	NS
P	<i>Isoetes prototypus</i>	Prototype Quillwort	Special Concern	Special Concern	Vulnerable	S2	17	72.5 ± 0.0	NS
P	<i>Scirpus longii</i>	Long's Bulrush	Special Concern		Vulnerable	S3	474	61.2 ± 0.0	NS
P	<i>Floerkea proserpinacoides</i>	False Mermaidweed	Not At Risk			S2	24	30.0 ± 1.0	NS
P	<i>Smilax rotundifolia</i>	Round-leaved Greenbrier	Not At Risk			S3	374	74.3 ± 0.0	NS
P	<i>Crocianthemum canadense</i>	Long-branched Frostweed			Endangered	S1	127	44.3 ± 0.0	NS
P	<i>Cypripedium arietinum</i>	Ram's-Head Lady's-Slipper			Endangered	S1	167	10.8 ± 13.0	NS
P	<i>Thuja occidentalis</i>	Eastern White Cedar			Vulnerable	S1	164	18.1 ± 0.0	NS
P	<i>Acer saccharinum</i>	Silver Maple				S1	11	27.6 ± 0.0	NS
P	<i>Toxicodendron vernix</i>	Poison Sumac				S1	41	88.7 ± 0.0	NS
P	<i>Osmorhiza depauperata</i>	Blunt Sweet Cicely				S1	1	22.0 ± 5.0	NS
P	<i>Sanicula odorata</i>	Clustered Sanicle				S1	10	24.7 ± 0.0	NS

Taxonomic Group	Scientific Name	Common Name	COSEWIC	SARA	Prov Legal Prot	Prov Rarity Rank	# recs	Distance (km)	Prov
P	<i>Zizia aurea</i>	Golden Alexanders				S1	4	43.8 ± 0.0	NS
P	<i>Antennaria rosea</i> ssp. <i>arida</i>	Rosy Pussytoes				S1	1	58.0 ± 0.0	NS
P	<i>Antennaria parlinii</i> ssp. <i>fallax</i>	Parlin's Pussytoes				S1	25	18.2 ± 0.0	NS
P	<i>Ageratina altissima</i>	White Snakeroot				S1	35	58.8 ± 0.0	NS
P	<i>Andersonglossum boreale</i>	Northern Wild Comfrey				S1	5	22.0 ± 1.0	NS
P	<i>Turritis glabra</i>	Tower Mustard				S1	2	30.5 ± 0.0	NS
P	<i>Draba glabella</i>	Rock Whitlow-Grass				S1	8	43.3 ± 0.0	NS
P	<i>Lobelia spicata</i>	Pale-Spiked Lobelia				S1	8	32.8 ± 7.0	NS
P	<i>Silene antirrhina</i>	Sleepy Catchfly				S1	5	48.9 ± 0.0	NS
P	<i>Astragalus robbinsii</i> var. <i>minor</i>	Robbins' Milkvetch				S1	31	57.9 ± 0.0	NS
P	<i>Desmodium canadense</i>	Canada Tick-trefoil				S1	9	18.1 ± 7.0	NS
P	<i>Hylodesmum glutinosum</i>	Large Tick-trefoil				S1	38	18.5 ± 1.0	NS
P	<i>Ribes americanum</i>	Wild Black Currant				S1	7	16.0 ± 1.0	NS
P	<i>Trichostema dichotomum</i>	Forked Bluecurls				S1	6	67.0 ± 0.0	NS
P	<i>Fraxinus pennsylvanica</i>	Red Ash				S1	12	26.4 ± 0.0	NS
P	<i>Polygala polygama</i>	Racemed Milkwort				S1	12	46.7 ± 0.0	NS
P	<i>Polygonum achoreum</i>	Leathery Knotweed				S1	1	83.3 ± 10.0	NS
P	<i>Persicaria careyi</i>	Carey's Smartweed				S1	1	90.0 ± 3.0	NS
P	<i>Podostemum ceratophyllum</i>	Horn-leaved Riverweed				S1	4	50.6 ± 0.0	NS
P	<i>Montia fontana</i>	Water Blinks				S1	3	61.5 ± 0.0	NS
P	<i>Lysimachia minima</i>	Chaffweed				S1	1	91.6 ± 0.0	NS
P	<i>Lysimachia quadrifolia</i>	Whorled Yellow Loosestrife				S1	1	37.1 ± 0.0	NS
P	<i>Clematis occidentalis</i>	Purple Clematis				S1	9	91.8 ± 0.0	NB
P	<i>Ranunculus pensylvanicus</i>	Pennsylvania Buttercup				S1	23	94.5 ± 0.0	NS
P	<i>Amelanchier nantucketensis</i>	Nantucket Serviceberry				S1	1	59.0 ± 1.0	NS
P	<i>Salix myrtilifolia</i>	Blueberry Willow				S1	1	88.4 ± 0.0	NS
P	<i>Salix serissima</i>	Autumn Willow				S1	2	88.4 ± 0.0	NS
P	<i>Scrophularia lanceolata</i>	Lance-leaved Figwort				S1	2	46.0 ± 1.0	NS
P	<i>Dirca palustris</i>	Eastern Leatherwood				S1	55	21.0 ± 0.0	NS
P	<i>Boehmeria cylindrica</i>	Small-spike False-nettle				S1	50	51.9 ± 0.0	NS
P	<i>Pilea pumila</i>	Dwarf Clearweed				S1	4	31.6 ± 0.0	NS
P	<i>Carex chordorrhiza</i>	Creeping Sedge				S1	2	95.4 ± 0.0	NB
P	<i>Carex digitalis</i>	Slender Wood Sedge				S1	4	76.4 ± 0.0	NS
P	<i>Carex gynocrates</i>	Northern Bog Sedge				S1	2	88.4 ± 0.0	NS
P	<i>Carex haydenii</i>	Hayden's Sedge				S1	4	27.6 ± 1.0	NS
P	<i>Carex laxiflora</i>	Loose-Flowered Sedge				S1	6	35.3 ± 7.0	NS
P	<i>Carex ormostachya</i>	Necklace Spike Sedge				S1	7	34.6 ± 5.0	NS
P	<i>Carex plantaginea</i>	Plantain-Leaved Sedge				S1	4	92.4 ± 0.0	NB
P	<i>Carex prairea</i>	Prairie Sedge				S1	2	32.3 ± 1.0	NS
P	<i>Carex tinctoria</i>	Tinged Sedge				S1	3	93.3 ± 0.0	NB
P	<i>Carex viridula</i> var. <i>saxillitoralis</i>	Greenish Sedge				S1	1	40.9 ± 0.0	NS
P	<i>Fimbristylis autumnalis</i>	Slender Fimbry				S1	3	95.7 ± 0.0	NS
P	<i>Scirpus atrovirens</i>	Dark-green Bulrush				S1	5	23.7 ± 0.0	NS
P	<i>Schoenoplectus torreyi</i>	Torrey's Bulrush				S1	8	62.8 ± 0.0	NS
P	<i>Iris prismatica</i>	Slender Blue Flag				S1	1	26.6 ± 100.0	NS
P	<i>Sisyrinchium fuscatum</i>	Coastal Plain Blue-eyed-grass				S1	5	53.2 ± 0.0	NS
P	<i>Juncus secundus</i>	Secund Rush				S1	3	32.1 ± 0.0	NS
P	<i>Juncus vaseyi</i>	Vasey Rush				S1	1	82.3 ± 0.0	NS
P	<i>Allium tricoccum</i>	Wild Leek				S1	57	30.6 ± 0.0	NS
P	<i>Trillium grandiflorum</i>	White Trillium				S1	3	32.3 ± 1.0	NS
P	<i>Malaxis monophyllos</i> var. <i>brachypoda</i>	North American White Adder's-mouth				S1	6	32.8 ± 10.0	NS
P	<i>Spiranthes casei</i> var. <i>casei</i>	Case's Ladies'-Tresses				S1	2	10.0 ± 0.0	NS
P	<i>Bromus latiglumis</i>	Broad-Glumed Brome				S1	6	98.4 ± 0.0	NS
P	<i>Dichanthelium</i>	Slender Panic Grass				S1	9	55.2 ± 0.0	NS

Taxonomic Group	Scientific Name	Common Name	COSEWIC	SARA	Prov Legal Prot	Prov Rarity Rank	# recs	Distance (km)	Prov
P	<i>xanthophyllum</i>								
P	<i>Elymus wiegandii</i>	Wiegand's Wild Rye				S1	6	63.3 ± 7.0	NS
P	<i>Elymus hystrix</i>	Spreading Wild Rye				S1	11	24.6 ± 0.0	NS
P	<i>Torreyochloa pallida</i> var. <i>pallida</i>	Pale False Manna Grass				S1	2	48.5 ± 1.0	NS
P	<i>Graphephorum melicoides</i>	Purple False Oats				S1	1	93.0 ± 0.0	NB
P	<i>Adiantum pedatum</i>	Northern Maidenhair Fern				S1	11	17.3 ± 10.0	NS
P	<i>Equisetum palustre</i>	Marsh Horsetail				S1	1	25.7 ± 5.0	NS
P	<i>Botrychium lunaria</i>	Common Moonwort				S1	8	78.0 ± 0.0	NS
P	<i>Selaginella rupestris</i>	Rock Spikemoss				S1	1	22.4 ± 0.0	NS
P	<i>Solidago hispida</i>	Hairy Goldenrod				S1?	1	63.3 ± 7.0	NS
P	<i>Suaeda rolandii</i>	Roland's Sea-Blite				S1?	8	16.4 ± 0.0	NS
P	<i>Carex pensylvanica</i>	Pennsylvania Sedge				S1?	3	60.5 ± 0.0	NS
P	<i>Bolboschoenus robustus</i>	Sturdy Bulrush				S1?	1	93.8 ± 5.0	NS
P	<i>Juncus antheratus</i>	Greater Poverty Rush				S1?	1	60.4 ± 0.0	NS
P	<i>Dichanthelium lindheimeri</i>	Lindheimer's Panicgrass				S1?	6	50.9 ± 1.0	NS
P	<i>Panicum dichotomiflorum</i> ssp. <i>puritanorum</i>	Spreading Panicgrass				S1?	5	83.5 ± 0.0	NS
P	<i>Huperzia selago</i>	Northern Firmoss				S1?	1	68.3 ± 1.0	NS
P	<i>Rudbeckia laciniata</i>	Cut-Leaved Coneflower				S1S2	16	16.0 ± 0.0	NS
P	<i>Arabis pycnocarpa</i>	Cream-flowered Rockcress				S1S2	2	56.5 ± 0.0	NS
P	<i>Cardamine maxima</i>	Large Toothwort				S1S2	14	48.9 ± 0.0	NS
P	<i>Proserpinaca intermedia</i>	Intermediate Mermaidweed				S1S2	5	25.3 ± 2.0	NS
P	<i>Conopholis americana</i>	American Cancer-root				S1S2	59	25.1 ± 1.0	NS
P	<i>Anemone virginiana</i> var. <i>alba</i>	Virginia Anemone				S1S2	1	93.3 ± 7.0	NS
P	<i>Hepatica americana</i>	Round-lobed Hepatica				S1S2	60	14.6 ± 13.0	NS
P	<i>Ranunculus sceleratus</i>	Cursed Buttercup				S1S2	24	54.1 ± 0.0	NS
P	<i>Gratiola neglecta</i>	Clammy Hedge-Hyssop				S1S2	4	89.0 ± 2.0	NS
P	<i>Carex livida</i>	Livid Sedge				S1S2	2	15.7 ± 10.0	NS
P	<i>Juncus greenii</i>	Greene's Rush				S1S2	5	35.0 ± 0.0	NS
P	<i>Juncus alpinoarticulatus</i> ssp. <i>americanus</i>	Northern Green Rush				S1S2	1	99.1 ± 0.0	NB
P	<i>Platanthera huronensis</i>	Fragrant Green Orchid				S1S2	3	29.9 ± 10.0	NS
P	<i>Calamagrostis stricta</i> ssp. <i>stricta</i>	Slim-stemmed Reed Grass				S1S2	3	73.0 ± 7.0	NS
P	<i>Cinna arundinacea</i>	Sweet Wood Reed Grass				S1S2	37	29.3 ± 0.0	NS
P	<i>Festuca subverticillata</i>	Nodding Fescue				S1S2	15	22.8 ± 7.0	NS
P	<i>Cryptogramma stelleri</i>	Steller's Rockbrake				S1S2	3	15.6 ± 0.0	NS
P	<i>Woodsia alpina</i>	Alpine Cliff Fern				S1S2	2	96.6 ± 0.0	NB
P	<i>Selaginella selaginoides</i>	Low Spikemoss				S1S2	3	91.8 ± 0.0	NB
P	<i>Conioselinum chinense</i>	Chinese Hemlock-parsley				S2	13	52.7 ± 0.0	NS
P	<i>Osmorhiza longistylis</i>	Smooth Sweet Cicely				S2	20	17.9 ± 0.0	NS
P	<i>Erigeron philadelphicus</i>	Philadelphia Fleabane				S2	2	68.4 ± 0.0	NS
P	<i>Eutrochium dubium</i>	Coastal Plain Joe Pye Weed				S2	2	80.2 ± 0.0	NS
P	<i>Lactuca hirsuta</i>	Hairy Lettuce				S2	6	16.8 ± 1.0	NS
P	<i>Symphyotrichum undulatum</i>	Wavy-leaved Aster				S2	139	22.4 ± 0.0	NS
P	<i>Symphyotrichum ciliolatum</i>	Fringed Blue Aster				S2	21	30.1 ± 0.0	NS
P	<i>Impatiens pallida</i>	Pale Jewelweed				S2	11	32.2 ± 7.0	NS
P	<i>Caulophyllum thalictroides</i>	Blue Cohosh				S2	56	18.6 ± 7.0	NS
P	<i>Boechera stricta</i>	Drummond's Rockcress				S2	12	37.9 ± 1.0	NS
P	<i>Cardamine parviflora</i>	Small-flowered Bittercress				S2	16	13.0 ± 7.0	NS
P	<i>Draba arabisans</i>	Rock Whitlow-Grass				S2	36	37.9 ± 1.0	NS
P	<i>Stellaria humifusa</i>	Saltmarsh Starwort				S2	15	56.5 ± 1.0	NS
P	<i>Stellaria longifolia</i>	Long-leaved Starwort				S2	7	65.5 ± 0.0	NS
P	<i>Hudsonia ericoides</i>	Pinebarren Golden Heather				S2	189	29.0 ± 0.0	NS
P	<i>Hypericum majus</i>	Large St John's-wort				S2	8	36.2 ± 10.0	NS
P	<i>Crassula aquatica</i>	Water Pygmyweed				S2	1	53.9 ± 0.0	NS



Taxonomic Group	Scientific Name	Common Name	COSEWIC	SARA	Prov Legal Prot	Prov Rarity Rank	# recs	Distance (km)	Prov
P	<i>Oxytropis campestris</i>	Field Locoweed				S2	1	58.7 ± 0.0	NS
P	<i>Oxytropis campestris</i> var. <i>johannensis</i>	Field Locoweed				S2	25	58.0 ± 0.0	NS
P	<i>Myriophyllum farwellii</i>	Farwell's Water Milfoil				S2	10	19.1 ± 0.0	NS
P	<i>Myriophyllum verticillatum</i>	Whorled Water Milfoil				S2	6	33.0 ± 3.0	NS
P	<i>Utricularia resupinata</i>	Inverted Bladderwort				S2	12	61.7 ± 0.0	NS
P	<i>Oenothera fruticosa</i> ssp. <i>tetragona</i>	Narrow-leaved Evening Primrose				S2	7	17.3 ± 7.0	NS
P	<i>Persicaria arifolia</i>	Halberd-leaved Tearthumb				S2	21	27.1 ± 1.0	NS
P	<i>Rumex triangulivalvis</i>	Triangular-valve Dock				S2	11	9.7 ± 5.0	NS
P	<i>Primula mistassinica</i>	Mistassini Primrose				S2	1	93.3 ± 7.0	NS
P	<i>Anemonastrum canadense</i>	Canada Anemone				S2	14	21.6 ± 1.0	NS
P	<i>Anemone quinquefolia</i>	Wood Anemone				S2	43	57.3 ± 0.0	NS
P	<i>Anemone virginiana</i>	Virginia Anemone				S2	13	21.2 ± 0.0	NS
P	<i>Anemone virginiana</i> var. <i>virginiana</i>	Virginia Anemone				S2	2	29.9 ± 7.0	NS
P	<i>Caltha palustris</i>	Yellow Marsh Marigold				S2	8	21.2 ± 5.0	NS
P	<i>Galium boreale</i>	Northern Bedstraw				S2	11	32.8 ± 7.0	NS
P	<i>Galium labradoricum</i>	Labrador Bedstraw				S2	59	85.1 ± 0.0	NS
P	<i>Salix pedicellaris</i>	Bog Willow				S2	103	32.3 ± 0.0	NS
P	<i>Salix sericea</i>	Silky Willow				S2	136	51.9 ± 0.0	NS
P	<i>Saxifraga paniculata</i> ssp. <i>laestadii</i>	Laestadius' Saxifrage				S2	25	32.8 ± 7.0	NS
P	<i>Tiarella cordifolia</i>	Heart-leaved Foamflower				S2	26	40.5 ± 0.0	NS
P	<i>Viola nephrophylla</i>	Northern Bog Violet				S2	10	17.3 ± 1.0	NS
P	<i>Carex bebbii</i>	Bebb's Sedge				S2	20	17.6 ± 0.0	NS
P	<i>Carex capillaris</i>	Hairlike Sedge				S2	13	58.0 ± 0.0	NS
P	<i>Carex castanea</i>	Chestnut Sedge				S2	26	40.0 ± 0.0	NS
P	<i>Carex comosa</i>	Bearded Sedge				S2	9	12.5 ± 5.0	NS
P	<i>Carex hystericina</i>	Porcupine Sedge				S2	8	32.1 ± 0.0	NS
P	<i>Carex longii</i>	Long's Sedge				S2	1	99.8 ± 10.0	NS
P	<i>Carex tenera</i>	Tender Sedge				S2	7	31.7 ± 0.0	NS
P	<i>Carex tuckermanii</i>	Tuckerman's Sedge				S2	37	19.2 ± 0.0	NS
P	<i>Carex atratiformis</i>	Scabrous Black Sedge				S2	3	59.5 ± 0.0	NS
P	<i>Vallisneria americana</i>	Wild Celery				S2	15	53.3 ± 0.0	NS
P	<i>Allium schoenoprasum</i>	Wild Chives				S2	5	21.7 ± 0.0	NS
P	<i>Allium schoenoprasum</i> var. <i>sibiricum</i>	Wild Chives				S2	1	93.3 ± 7.0	NS
P	<i>Lilium canadense</i>	Canada Lily				S2	60	17.3 ± 7.0	NS
P	<i>Najas gracillima</i>	Thread-Like Naiad				S2	22	29.5 ± 0.0	NS
P	<i>Cypripedium parviflorum</i> var. <i>pubescens</i>	Yellow Lady's-slipper				S2	22	18.0 ± 0.0	NS
P	<i>Cypripedium parviflorum</i> var. <i>makasin</i>	Small Yellow Lady's-Slipper				S2	13	14.6 ± 7.0	NS
P	<i>Cypripedium reginae</i>	Showy Lady's-Slipper				S2	45	27.6 ± 0.0	NS
P	<i>Goodyera pubescens</i>	Downy Rattlesnake-Plantain				S2	73	18.5 ± 0.0	NS
P	<i>Platanthera flava</i>	Southern Rein-Orchid				S2	37	51.6 ± 0.0	NS
P	<i>Platanthera flava</i> var. <i>flava</i>	Southern Rein Orchid				S2	19	22.8 ± 7.0	NS
P	<i>Platanthera flava</i> var. <i>herbiola</i>	Pale Green Orchid				S2	25	19.5 ± 1.0	NS
P	<i>Platanthera macrophylla</i>	Large Round-Leaved Orchid				S2	8	7.3 ± 1.0	NS
P	<i>Spiranthes casei</i>	Case's Ladies'-Tresses				S2	1	74.9 ± 0.0	NS
P	<i>Spiranthes casei</i> var. <i>novaescotiae</i>	Case's Ladies'-Tresses				S2	1	59.0 ± 0.0	NS
P	<i>Spiranthes lucida</i>	Shining Ladies'-Tresses				S2	11	15.6 ± 1.0	NS
P	<i>Calamagrostis stricta</i>	Slim-stemmed Reed Grass				S2	4	95.2 ± 2.0	NB
P	<i>Dichanthelium linearifolium</i>	Narrow-leaved Panic Grass				S2	15	21.2 ± 7.0	NS
P	<i>Piptatheropsis canadensis</i>	Canada Ricegrass				S2	20	39.7 ± 0.0	NS

Taxonomic Group	Scientific Name	Common Name	COSEWIC	SARA	Prov Legal Prot	Prov Rarity Rank	# recs	Distance (km)	Prov
P	<i>Piptatheropsis pungens</i>	Slender Ricegrass				S2	10	59.6 ± 10.0	NS
P	<i>Potamogeton friesii</i>	Fries' Pondweed				S2	11	27.5 ± 1.0	NS
P	<i>Potamogeton richardsonii</i>	Richardson's Pondweed				S2	7	27.6 ± 1.0	NS
P	<i>Dryopteris fragrans</i>	Fragrant Wood Fern				S2	49	47.7 ± 0.0	NS
P	<i>Woodsia glabella</i>	Smooth Cliff Fern				S2	27	64.1 ± 1.0	NS
P	<i>Symphotrichum boreale</i>	Boreal Aster				S2?	8	54.6 ± 5.0	NS
P	<i>Cuscuta cephalanthi</i>	Buttonbush Dodder				S2?	2	35.9 ± 0.0	NS
P	<i>Epilobium coloratum</i>	Purple-veined Willowherb				S2?	17	20.5 ± 1.0	NS
P	<i>Rumex persicarioides</i>	Peach-leaved Dock				S2?	1	36.4 ± 0.0	NS
P	<i>Crataegus submollis</i>	Quebec Hawthorn				S2?	5	21.7 ± 1.0	NS
P	<i>Carex peckii</i>	White-Tinged Sedge				S2?	6	25.1 ± 5.0	NS
P	<i>Eleocharis ovata</i>	Ovate Spikerush				S2?	8	18.3 ± 0.0	NS
P	<i>Scirpus pedicellatus</i>	Stalked Bulrush				S2?	4	68.5 ± 0.0	NS
P	<i>Potamogeton pulcher</i>	Spotted Pondweed			Vulnerable	S2S3	26	58.2 ± 0.0	NS
P	<i>Hieracium robinsonii</i>	Robinson's Hawkweed				S2S3	6	95.1 ± 1.0	NS
P	<i>Iva frutescens</i>	Big-leaved Marsh-elder				S2S3	31	16.2 ± 1.0	NS
P	<i>Senecio pseudoarnica</i>	Seabeach Ragwort				S2S3	11	59.8 ± 0.0	NS
P	<i>Betula michauxii</i>	Michaux's Dwarf Birch				S2S3	59	42.7 ± 0.0	NS
P	<i>Sagina nodosa</i>	Knotted Pearlwort				S2S3	34	53.2 ± 0.0	NS
P	<i>Sagina nodosa ssp. borealis</i>	Knotted Pearlwort				S2S3	3	67.3 ± 0.0	NS
P	<i>Ceratophyllum echinatum</i>	Prickly Hornwort				S2S3	10	27.5 ± 3.0	NS
P	<i>Hypericum x dissimulatum</i>	Disguised St. John's-wort				S2S3	6	52.9 ± 0.0	NS
P	<i>Triosteum aurantiacum</i>	Orange-fruited Tinker's Weed				S2S3	22	23.8 ± 0.0	NS
P	<i>Shepherdia canadensis</i>	Soapberry				S2S3	95	17.6 ± 0.0	NS
P	<i>Empetrum atropurpureum</i>	Purple Crowberry				S2S3	5	46.0 ± 7.0	NS
P	<i>Euphorbia polygonifolia</i>	Seaside Spurge				S2S3	3	48.6 ± 3.0	NS
P	<i>Halenia deflexa</i>	Spurred Gentian				S2S3	3	59.5 ± 0.0	NS
P	<i>Hedeoma pulegioides</i>	American False Pennyroyal				S2S3	18	20.5 ± 1.0	NS
P	<i>Polygonum aviculare ssp. buxiforme</i>	Box Knotweed				S2S3	8	17.0 ± 0.0	NS
P	<i>Polygonum oxyspermum ssp. raii</i>	Ray's Knotweed				S2S3	5	37.3 ± 1.0	NS
P	<i>Polygonum oxyspermum</i>	Sharp-fruit Knotweed				S2S3	1	48.4 ± 0.0	NS
P	<i>Amelanchier fernaldii</i>	Fernald's Serviceberry				S2S3	1	52.6 ± 7.0	NS
P	<i>Potentilla canadensis</i>	Canada Cinquefoil				S2S3	8	43.7 ± 0.0	NS
P	<i>Galium aparine</i>	Common Bedstraw				S2S3	13	19.5 ± 2.0	NS
P	<i>Galium obtusum</i>	Blunt-leaved Bedstraw				S2S3	8	59.5 ± 0.0	NS
P	<i>Salix pellita</i>	Satiny Willow				S2S3	9	62.1 ± 7.0	NS
P	<i>Carex adusta</i>	Lesser Brown Sedge				S2S3	9	60.0 ± 5.0	NS
P	<i>Carex hirtifolia</i>	Pubescent Sedge				S2S3	24	24.7 ± 0.0	NS
P	<i>Carex houghtoniana</i>	Houghton's Sedge				S2S3	11	79.0 ± 0.0	NS
P	<i>Eleocharis flavescens var. olivacea</i>	Bright-green Spikerush				S2S3	14	60.5 ± 0.0	NS
P	<i>Eriophorum gracile</i>	Slender Cottongrass				S2S3	9	17.1 ± 1.0	NS
P	<i>Coeloglossum viride</i>	Long-bracted Frog Orchid				S2S3	13	12.5 ± 1.0	NS
P	<i>Cypripedium parviflorum</i>	Yellow Lady's-slipper				S2S3	528	11.4 ± 0.0	NS
P	<i>Poa glauca</i>	Glaucous Blue Grass				S2S3	24	31.6 ± 1.0	NS
P	<i>Stuckenia filiformis</i>	Thread-leaved Pondweed				S2S3	1	96.9 ± 7.0	NS
P	<i>Botrychium lanceolatum ssp. angustisegmentum</i>	Narrow Triangle Moonwort				S2S3	11	23.5 ± 0.0	NS
P	<i>Botrychium simplex</i>	Least Moonwort				S2S3	7	15.6 ± 1.0	NS
P	<i>Ophioglossum pusillum</i>	Northern Adder's-tongue				S2S3	8	14.9 ± 7.0	NS
P	<i>Angelica atropurpurea</i>	Purple-stemmed Angelica				S3	1	88.3 ± 0.0	NS
P	<i>Erigeron hyssopifolius</i>	Hyssop-leaved Fleabane				S3	49	17.3 ± 7.0	NS
P	<i>Hieracium paniculatum</i>	Panicled Hawkweed				S3	35	15.8 ± 11.0	NS
P	<i>Bidens beckii</i>	Water Beggarticks				S3	29	52.3 ± 0.0	NS
P	<i>Packera paupercula var.</i>	Balsam Groundsel				S3	1	22.9 ± 0.0	NS

Taxonomic Group	Scientific Name	Common Name	COSEWIC	SARA	Prov Legal Prot	Prov Rarity Rank	# recs	Distance (km)	Prov
P	<i>paupercula</i>								
P	<i>Packera paupercula</i>	Balsam Groundsel				S3	63	18.0 ± 0.0	NS
P	<i>Alnus serrulata</i>	Smooth Alder				S3	697	53.3 ± 0.0	NS
P	<i>Betula pumila</i> var. <i>pumila</i>	Bog Birch				S3	1	84.8 ± 1.0	NS
P	<i>Betula pumila</i>	Bog Birch				S3	3	86.7 ± 0.0	NS
P	<i>Campanula aparinoides</i>	Marsh Bellflower				S3	18	32.8 ± 1.0	NS
P	<i>Mononeuria groenlandica</i>	Greenland Stitchwort				S3	144	42.2 ± 0.0	NS
P	<i>Viburnum edule</i>	Squashberry				S3	7	96.7 ± 1.0	NB
P	<i>Empetrum eamesii</i>	Pink Crowberry				S3	93	35.0 ± 0.0	NS
P	<i>Vaccinium boreale</i>	Northern Blueberry				S3	3	70.4 ± 0.0	NS
P	<i>Vaccinium cespitosum</i>	dwarf bilberry				S3	68	3.0 ± 0.0	NS
P	<i>Vaccinium uliginosum</i>	Alpine Bilberry				S3	3	73.6 ± 1.0	NS
P	<i>Bartonia virginica</i>	Yellow Bartonia				S3	44	49.8 ± 0.0	NS
P	<i>Geranium bicknellii</i>	Bicknell's Crane's-bill				S3	24	14.9 ± 3.0	NS
P	<i>Proserpinaca palustris</i>	Marsh Mermaidweed				S3	51	16.9 ± 1.0	NS
P	<i>Proserpinaca pectinata</i>	Comb-leaved Mermaidweed				S3	67	39.7 ± 3.0	NS
P	<i>Teucrium canadense</i>	Canada Germander				S3	56	35.9 ± 0.0	NS
P	<i>Decodon verticillatus</i>	Swamp Loosestrife				S3	101	71.0 ± 7.0	NS
P	<i>Epilobium hornemannii</i>	Hornemann's Willowherb				S3	4	96.3 ± 0.0	NB
P	<i>Epilobium strictum</i>	Downy Willowherb				S3	11	23.0 ± 1.0	NS
P	<i>Polygala sanguinea</i>	Blood Milkwort				S3	20	35.0 ± 0.0	NS
P	<i>Persicaria pensylvanica</i>	Pennsylvania Smartweed				S3	30	14.7 ± 1.0	NS
P	<i>Fallopia scandens</i>	Climbing False Buckwheat				S3	16	27.2 ± 7.0	NS
P	<i>Plantago rugelii</i>	Rugel's Plantain				S3	13	21.3 ± 3.0	NS
P	<i>Primula laurentiana</i>	Laurentian Primrose				S3	64	26.1 ± 7.0	NS
P	<i>Samolus parviflorus</i>	Seaside Brookweed				S3	47	57.3 ± 1.0	NS
P	<i>Pyrola asarifolia</i>	Pink Pyrola				S3	12	42.1 ± 0.0	NS
P	<i>Pyrola minor</i>	Lesser Pyrola				S3	3	32.2 ± 7.0	NS
P	<i>Ranunculus gmelinii</i>	Gmelin's Water Buttercup				S3	61	16.4 ± 5.0	NS
P	<i>Endotropis alnifolia</i>	alder-leaved buckthorn				S3	157	23.0 ± 1.0	NS
P	<i>Agrimonia gryposepala</i>	Hooked Agrimony				S3	159	16.1 ± 3.0	NS
P	<i>Amelanchier spicata</i>	Running Serviceberry				S3	59	19.7 ± 2.0	NS
P	<i>Cephalanthus occidentalis</i>	Common Buttonbush				S3	1945	62.2 ± 0.0	NS
P	<i>Geocaulon lividum</i>	Northern Comandra				S3	5	47.7 ± 1.0	NS
P	<i>Limosella australis</i>	Southern Mudwort				S3	11	60.3 ± 0.0	NS
P	<i>Lindernia dubia</i>	Yellow-seeded False Pimperel				S3	19	19.3 ± 2.0	NS
P	<i>Laportea canadensis</i>	Canada Wood Nettle				S3	43	22.3 ± 2.0	NS
P	<i>Verbena hastata</i>	Blue Vervain				S3	132	7.5 ± 7.0	NS
P	<i>Carex cryptolepis</i>	Hidden-scaled Sedge				S3	15	18.1 ± 0.0	NS
P	<i>Carex eburnea</i>	Bristle-leaved Sedge				S3	12	71.2 ± 0.0	NS
P	<i>Carex lupulina</i>	Hop Sedge				S3	58	12.5 ± 1.0	NS
P	<i>Carex rosea</i>	Rosy Sedge				S3	38	19.3 ± 11.0	NS
P	<i>Carex swanii</i>	Swan's Sedge				S3	18	50.7 ± 0.0	NS
P	<i>Carex tribuloides</i>	Blunt Broom Sedge				S3	16	13.1 ± 3.0	NS
P	<i>Carex wiegandii</i>	Wiegand's Sedge				S3	10	30.1 ± 0.0	NS
P	<i>Carex foenea</i>	Fernald's Hay Sedge				S3	22	33.4 ± 0.0	NS
P	<i>Eleocharis nitida</i>	Quill Spikerush				S3	21	22.8 ± 1.0	NS
P	<i>Elodea canadensis</i>	Canada Waterweed				S3	12	28.3 ± 0.0	NS
P	<i>Juncus marginatus</i>	Grassleaf Rush				S3	14	61.7 ± 2.0	NS
P	<i>Juncus subcaudatus</i>	Woods-Rush				S3	24	10.9 ± 1.0	NS
P	<i>Juncus dudleyi</i>	Dudley's Rush				S3	25	16.4 ± 0.0	NS
P	<i>Goodyera repens</i>	Lesser Rattlesnake-plantain				S3	26	17.3 ± 1.0	NS
P	<i>Neottia bifolia</i>	Southern Twayblade				S3	126	11.0 ± 0.0	NS
P	<i>Platanthera grandiflora</i>	Large Purple Fringed Orchid				S3	46	14.0 ± 1.0	NS
P	<i>Platanthera hookeri</i>	Hooker's Orchid				S3	26	4.9 ± 0.0	NS
P	<i>Platanthera orbiculata</i>	Small Round-leaved Orchid				S3	51	32.7 ± 4.0	NS
P	<i>Spiranthes ochroleuca</i>	Yellow Ladies'-tresses				S3	38	15.4 ± 1.0	NS

Taxonomic Group	Scientific Name	Common Name	COSEWIC	SARA	Prov Legal Prot	Prov Rarity Rank	# recs	Distance (km)	Prov
P	<i>Alopecurus aequalis</i>	Short-awned Foxtail				S3	16	43.7 ± 1.0	NS
P	<i>Dichanthelium clandestinum</i>	Deer-tongue Panic Grass				S3	288	19.4 ± 10.0	NS
P	<i>Coleataenia longifolia</i>	Long-leaved Panicgrass				S3	1592	61.7 ± 0.0	NS
P	<i>Potamogeton obtusifolius</i>	Blunt-leaved Pondweed				S3	3	44.9 ± 0.0	NS
P	<i>Potamogeton praelongus</i>	White-stemmed Pondweed				S3	3	25.2 ± 1.0	NS
P	<i>Potamogeton zosteriformis</i>	Flat-stemmed Pondweed				S3	13	27.6 ± 1.0	NS
P	<i>Sparganium natans</i>	Small Burreed				S3	10	19.6 ± 5.0	NS
P	<i>Asplenium trichomanes</i>	Maidenhair Spleenwort				S3	22	18.7 ± 0.0	NS
P	<i>Asplenium viride</i>	Green Spleenwort				S3	13	55.3 ± 7.0	NS
P	<i>Lorinseria areolata</i>	netted chain fern				S3	1	92.2 ± 7.0	NS
P	<i>Equisetum pratense</i>	Meadow Horsetail				S3	12	18.7 ± 0.0	NS
P	<i>Equisetum variegatum</i>	Variegated Horsetail				S3	36	21.9 ± 0.0	NS
P	<i>Isoetes tuckermanii</i> ssp. <i>acadiensis</i>	Acadian Quillwort				S3	15	17.7 ± 0.0	NS
P	<i>Diphasiastrum sitchense</i>	Sitka Ground-cedar				S3	2	22.2 ± 1.0	NS
P	<i>Huperzia appressa</i>	Mountain Firmoss				S3	21	40.4 ± 1.0	NS
P	<i>Sceptridium dissectum</i>	Dissected Moonwort				S3	7	49.2 ± 0.0	NS
P	<i>Polypodium appalachianum</i>	Appalachian Polypody				S3	33	18.9 ± 0.0	NS
P	<i>Bidens vulgata</i>	Tall Beggarticks				S3?	5	59.0 ± 0.0	NS
P	<i>Persicaria amphibia</i> var. <i>emersa</i>	Long-root Smartweed				S3?	29	18.4 ± 0.0	NS
P	<i>Diphasiastrum x sabinifolium</i>	Savin-leaved Ground-cedar				S3?	14	61.2 ± 0.0	NS
P	<i>Solidago latissimifolia</i>	Elliott's Goldenrod				S3S4	8	82.5 ± 1.0	NS
P	<i>Atriplex glabriuscula</i> var. <i>franktonii</i>	Frankton's Saltbush				S3S4	15	16.3 ± 0.0	NS
P	<i>Suaeda calceoliformis</i>	Horned Sea-blite				S3S4	9	16.7 ± 0.0	NS
P	<i>Vaccinium corymbosum</i>	Highbush Blueberry				S3S4	6	54.0 ± 0.0	NS
P	<i>Myriophyllum sibiricum</i>	Siberian Water Milfoil				S3S4	1	99.3 ± 0.0	NS
P	<i>Rhexia virginica</i>	Virginia Meadow Beauty				S3S4	1246	34.1 ± 0.0	NS
P	<i>Nuphar microphylla</i>	Small Yellow Pond-lily				S3S4	2	90.4 ± 2.0	NS
P	<i>Sanguinaria canadensis</i>	Bloodroot				S3S4	80	23.0 ± 0.0	NS
P	<i>Polygonum fowleri</i>	Fowler's Knotweed				S3S4	5	72.7 ± 1.0	NS
P	<i>Rumex fueginus</i>	Tierra del Fuego Dock				S3S4	35	16.6 ± 0.0	NS
P	<i>Crataegus succulenta</i>	Fleshy Hawthorn				S3S4	1	54.8 ± 0.0	NS
P	<i>Fragaria vesca</i> ssp. <i>americana</i>	Woodland Strawberry				S3S4	62	23.5 ± 0.0	NS
P	<i>Fragaria vesca</i>	Woodland Strawberry				S3S4	2	94.2 ± 0.0	NB
P	<i>Salix petiolaris</i>	Meadow Willow				S3S4	15	34.1 ± 0.0	NS
P	<i>Agalinis neoscotica</i>	Nova Scotia Agalinis				S3S4	57	25.9 ± 0.0	NS
P	<i>Viola sagittata</i> var. <i>ovata</i>	Arrow-Leaved Violet				S3S4	53	20.3 ± 5.0	NS
P	<i>Symplocarpus foetidus</i>	Eastern Skunk Cabbage				S3S4	3	62.2 ± 0.0	NS
P	<i>Carex argyrantha</i>	Silvery-flowered Sedge				S3S4	27	8.6 ± 1.0	NS
P	<i>Eriophorum russeolum</i>	Russet Cottongrass				S3S4	15	17.7 ± 5.0	NS
P	<i>Sisyrinchium atlanticum</i>	Eastern Blue-Eyed-Grass				S3S4	113	48.8 ± 0.0	NS
P	<i>Triglochin gaspensis</i>	Gasp Arrowgrass				S3S4	12	59.5 ± 0.0	NS
P	<i>Juncus acuminatus</i>	Sharp-Fruit Rush				S3S4	16	10.6 ± 0.0	NS
P	<i>Luzula parviflora</i>	Small-flowered Woodrush				S3S4	10	57.6 ± 7.0	NS
P	<i>Liparis loeselii</i>	Loesel's Twayblade				S3S4	10	20.4 ± 5.0	NS
P	<i>Panicum philadelphicum</i>	Philadelphia Panicgrass				S3S4	26	31.7 ± 0.0	NS
P	<i>Trisetum spicatum</i>	Narrow False Oats				S3S4	20	22.6 ± 0.0	NS
P	<i>Cystopteris bulbifera</i>	Bulblet Bladder Fern				S3S4	95	16.3 ± 1.0	NS
P	<i>Equisetum hyemale</i> ssp. <i>affine</i>	Common Scouring-rush				S3S4	97	13.0 ± 10.0	NS
P	<i>Equisetum scirpoides</i>	Dwarf Scouring-Rush				S3S4	79	18.9 ± 0.0	NS
P	<i>Diphasiastrum complanatum</i>	Northern Ground-cedar				S3S4	16	16.5 ± 0.0	NS
P	<i>Schizaea pusilla</i>	Little Curlygrass Fern				S3S4	148	53.8 ± 0.0	NS
P	<i>Bidens discoidea</i>	Swamp Beggarticks				SH	1	98.3 ± 0.0	NS
P	<i>Viola canadensis</i>	Canada Violet				SH	1	22.7 ± 0.0	NS

Taxonomic Group	Scientific Name	Common Name	COSEWIC	SARA	Prov Legal Prot	Prov Rarity Rank	# recs	Distance (km)	Prov
P	<i>Calamagrostis cinnoides</i>	Small Reedgrass				SH	1	59.2 ± 6.0	NS

## 5.1 SOURCE BIBLIOGRAPHY (100 km)

The recipient of these data shall acknowledge the AC CDC and the data sources listed below in any documents, reports, publications or presentations, in which this dataset makes a significant contribution.

# recs	CITATION
20767	Morrison, Guy. 2011. Maritime Shorebird Survey (MSS) database. Canadian Wildlife Service, Ottawa, 15939 surveys. 86171 recs.
11508	Lepage, D. 2014. Maritime Breeding Bird Atlas Database. Bird Studies Canada, Sackville NB, 407,838 recs.
7570	McNeil, J.A. 2010. Blandings Turtle ( <i>Emydoidea blandingii</i> ) sightings, 1946-2009. Parks Canada, 12,871 recs of 597+ individuals.
4831	Erskine, A.J. 1992. Maritime Breeding Bird Atlas Database. NS Museum & Nimbus Publ., Halifax, 82,125 recs.
3387	iNaturalist. 2020. iNaturalist Data Export 2020. iNaturalist.org and iNaturalist.ca, Web site: 128728 recs.
2760	Paquet, Julie. 2018. Atlantic Canada Shorebird Survey (ACSS) database 2012-2018. Environment Canada, Canadian Wildlife Service.
1650	McNeil, J.A. 2010. Ribbonsnake ( <i>Thamnophis sauritus</i> ) sightings, 1900-2009. Parks Canada, 2521 recs of 716+ individuals.
1600	Blaney, C.S.; Mazerolle, D.M. 2010. Fieldwork 2010. Atlantic Canada Conservation Data Centre. Sackville NB, 15508 recs.
1483	Blaney, C.S.; Mazerolle, D.M. 2012. Fieldwork 2012. Atlantic Canada Conservation Data Centre, 13,278 recs.
1401	eBird. 2020. eBird Basic Dataset. Version: EBD_relNov-2019. Ithaca, New York. Nov 2019, Cape Breton Bras d'Or Lakes Watershed subset. Cornell Lab of Ornithology.
1318	Blaney, C.S.; Mazerolle, D.M.; Belliveau, A.B. 2013. Atlantic Canada Conservation Data Centre Fieldwork 2013. Atlantic Canada Conservation Data Centre, 9000+ recs.
1082	Phinney, Lori. 2020. Pre- and post White-nose Syndrome bat acoustic monitoring, NS. Mersey Tobeatic Research Institute, 1279 recs.
1034	Belliveau, A. 2012. 2012 Atlantic Coastal Plain Flora observations. Mersey Tobeatic Research Institute, 1543.
980	Blaney, C.S.; Mazerolle, D.M.; Belliveau, A.B. 2014. Atlantic Canada Conservation Data Centre Fieldwork 2014. Atlantic Canada Conservation Data Centre, # recs.
952	Eaton, S. 2014. Nova Scotia Wood Turtle Database. Environment and Climate Change Canada, 4843 recs.
833	Benjamin, L.K. (compiler). 2007. Significant Habitat & Species Database. Nova Scotia Dept Natural Resources, 8439 recs.
796	Toms, Brad. 2012. Atlantic Coastal Plain Flora records, 2011. Mersey-Tobiatic Research Institute, 1109 recs.
763	McNeil, J.A. 2016. Blandings Turtle ( <i>Emydoidea blandingii</i> ), Eastern Ribbonsnake ( <i>Thamnophis sauritus</i> ), Wood Turtle ( <i>Glyptemys insculpta</i> ), and Snapping Turtle ( <i>Chelydra serpentina</i> ) sightings, 2016. Mersey Tobeatic Research Institute, 774 records.
688	Churchill, J.L. 2018. Atlantic Canada Conservation Data Centre Fieldwork 2018. Atlantic Canada Conservation Data Centre, 907 recs.
678	Blaney, C.S.; Mazerolle, D.M.; Belliveau, A.B. 2015. Atlantic Canada Conservation Data Centre Fieldwork 2015. Atlantic Canada Conservation Data Centre, # recs.
623	Cameron, E. 2008. Canadian Gypsum Co. survey 2007-08. Conestoga-Rovers & Assoc., 623 recs.
566	Newell, R.E. 2000. E.C. Smith Herbarium Database. Acadia University, Wolfville NS, 7139 recs.
563	eBird. 2014. eBird Basic Dataset. Version: EBD_relNov-2014. Ithaca, New York. Nov 2014. Cornell Lab of Ornithology, 25036 recs.
525	Scott, F.W. 2002. Nova Scotia Herpetofauna Atlas Database. Acadia University, Wolfville NS, 8856 recs.
517	Newell, R.E. 2005. E.C. Smith Digital Herbarium. E.C. Smith Herbarium, Irving Biodiversity Collection, Acadia University, Web site: <a href="http://luxor.acadiau.ca/library/Herbarium/project/">http://luxor.acadiau.ca/library/Herbarium/project/</a> . 582 recs.
497	Belliveau, A.G. 2016. Atlantic Canada Conservation Data Centre Fieldwork 2016. Atlantic Canada Conservation Data Centre, 10695 recs.
453	Churchill, J.L. 2019. Atlantic Canada Conservation Data Centre Fieldwork 2019. Atlantic Canada Conservation Data Centre.
442	McNeil, J.A. 2019. Blanding's Turtle records, 2017. Mersey Tobeatic Research Institute, 372 recs.
436	Brazner, J. 2016. Nova Scotia Forested Wetland Bird Surveys. Nova Scotia Department of Lands and Forestry.
418	Belliveau, A.G. 2018. Atlantic Canada Conservation Data Centre Fieldwork 2017. Atlantic Canada Conservation Data Centre.
402	Klymko, J. 2018. Maritimes Butterfly Atlas database. Atlantic Canada Conservation Data Centre.
395	Benjamin, L.K. (compiler). 2012. Significant Habitat & Species Database. Nova Scotia Dept Natural Resources, 4965 recs.
385	Toms, Brad. 2011. Atlantic Coastal Plain Flora records 2010. Mersey-Tobiatic Research Institute, 1074 recs.
382	Blaney, C.S.; Mazerolle, D.M. 2008. Fieldwork 2008. Atlantic Canada Conservation Data Centre. Sackville NB, 13343 recs.
382	Churchill, J.L. 2018. Atlantic Canada Conservation Data Centre Fieldwork 2017. Atlantic Canada Conservation Data Centre, 2318 recs.
372	McNeil, J.A. 2018. Blanding's Turtle records, 2018. Mersey Tobeatic Research Institute, 372 recs.
366	Mazerolle, D.M. 2016. Atlantic Canada Conservation Data Centre Fieldwork 2017. Atlantic Canada Conservation Data Centre.
345	Blaney, C.S.; Mazerolle, D.M.; Oberndorfer, E. 2007. Fieldwork 2007. Atlantic Canada Conservation Data Centre. Sackville NB, 13770 recs.
341	Hill, N.M. 1994. Status report on the Long's bulrush <i>Scirpus longii</i> in Canada. Committee on the Status of Endangered Wildlife in Canada, 7 recs.
337	Chapman, C.J. 2019. Atlantic Canada Conservation Data Centre 2019 botanical fieldwork. Atlantic Canada Conservation Data Centre, 11729 recs.
331	Hicks, Andrew. 2009. Coastal Waterfowl Surveys Database, 2000-08. Canadian Wildlife Service, Sackville, 46488 recs (11149 non-zero).
312	Pronych, G. & Wilson, A. 1993. Atlas of Rare Vascular Plants in Nova Scotia. Nova Scotia Museum, Halifax NS, I:1-168, II:169-331. 1446 recs.
311	Blaney, C.S. & Mazerolle, D.M. 2011. 2011 botanical surveys in Kejimikujik National Park. Atlantic Canada Conservation Data Centre, 820 recs.
306	McNeil, J.A. 2015. Blandings Turtle ( <i>Emydoidea blandingii</i> ), Eastern Ribbonsnake ( <i>Thamnophis sauritus</i> ), and Snapping Turtle ( <i>Chelydra serpentina</i> ) sightings, 2015. Mersey Tobeatic Research Institute.
286	Amirault, D.L. & Stewart, J. 2007. Piping Plover Database 1894-2006. Canadian Wildlife Service, Sackville, 3344 recs, 1228 new.
286	Blaney, C.S.; Mazerolle, D.M. 2009. Fieldwork 2009. Atlantic Canada Conservation Data Centre. Sackville NB, 13395 recs.
258	Toms, B. 2018. Bat Species data from <a href="http://www.batconservation.ca">www.batconservation.ca</a> for Nova Scotia. Mersey Tobeatic Research Institute, 547 Records.



# recs	CITATION
255	Brunelle, P.-M. (compiler). 2009. ADIP/MDDS Odonata Database: data to 2006 inclusive. Atlantic Dragonfly Inventory Program (ADIP), 24200 recs.
224	Belland, R.J. Maritimes moss records from various herbarium databases. 2014.
223	Munro, Marian K. Nova Scotia Provincial Museum of Natural History Herbarium Database. Nova Scotia Provincial Museum of Natural History, Halifax, Nova Scotia. 2013.
219	Munro, Marian K. Tracked lichen specimens, Nova Scotia Provincial Museum of Natural History Herbarium. Atlantic Canada Conservation Data Centre. 2019.
202	Smith, D. 2013. Personal communication concerning Anguilla rostrata trapping results in Kejimikujik NP, NS. Winter 2013. Pers. comm.
194	Bryson, I.C. 2020. Nova Scotia flora and lichen observations 2020. Nova Scotia Environment, 139 recs.
190	McNeil, J.A. 2019. Blanding's Turtle records, 2019. Mersey Tobeatic Research Institute.
190	McNeil, J.A. 2019. Eastern Painted Turtle trapping records, 2019. Mersey Tobeatic Research Institute.
189	e-Butterfly. 2016. Export of Maritimes records and photos. Maxim Larrivee, Sambo Zhang (ed.) e-butterfly.org.
185	Belliveau, A.G. 2018. E.C. Smith Herbarium and Atlantic Canada Conservation Data Centre Fieldwork 2018. E.C. Smith Herbarium, 6226 recs.
183	iNaturalist. 2018. iNaturalist Data Export 2018. iNaturalist.org and iNaturalist.ca, Web site: 11700 recs.
178	Neily, T.H. & Pepper, C.; Toms, B. 2018. Nova Scotia lichen database [as of 2018-03]. Mersey Tobeatic Research Institute.
168	Manthorne, A. 2014. MaritimesSwiftwatch Project database 2013-2014. Bird Studies Canada, Sackville NB, 326 recs.
160	Layberry, R.A. & Hall, P.W., LaFontaine, J.D. 1998. The Butterflies of Canada. University of Toronto Press. 280 pp+plates.
157	Blaney, C.S.; Mazerolle, D.M.; Hill, N.M. 2011. Nova Scotia Crown Share Land Legacy Trust Fieldwork. Atlantic Canada Conservation Data Centre, 5022 recs.
152	McNeil, J.A. 2014. Blandings Turtle ( <i>Emydoidea blandingii</i> ) and Snapping Turtle ( <i>Chelydra serpentina</i> ) sightings, 2014. Mersey Tobeatic Research Institute.
145	Berrigan, L. 2019. Maritimes Marsh Monitoring Project 2013, 2014, 2016, 2017, and 2018 data. Bird Studies Canada, Sackville, NB.
144	McNeil, J.A. 2011. Ribbonsnake ( <i>Thamnophis sauritus</i> ) sightings, 2010. Parks Canada, 148 recs of 70+ individuals.
140	Belliveau, A.G. 2014. Plant Records from Southern and Central Nova Scotia. Atlantic Canada Conservation Data Centre, 919 recs.
134	NatureServe Canada. 2019. iNaturalist Maritimes Butterfly Records. iNaturalist.org and iNaturalist.ca.
133	Staicer, C. & Bliss, S.; Achenbach, L. 2017. Occurrences of tracked breeding birds in forested wetlands. , 303 records.
131	Blaney, C.S.; Mazerolle, D.M. 2011. Fieldwork 2011. Atlantic Canada Conservation Data Centre. Sackville NB.
130	Keddy, C.J. 1989. Habitat securement for redroot, golden crest and Long's bulrush in Ponhook Lake, NS. World Wildlife Fund (Canada), 131 recs.
129	Mazerolle, D.M. 2017. Atlantic Canada Conservation Data Centre Fieldwork 2017. Atlantic Canada Conservation Data Centre.
122	Stewart, J.I. 2010. Peregrine Falcon Surveys in New Brunswick, 2002-09. Canadian Wildlife Service, Sackville, 58 recs.
120	McNeil, J.A. 2018. Wood Turtle records, 2018. Mersey Tobeatic Research Institute, 68 recs.
115	e-Butterfly. 2019. Export of Maritimes records and photos. McFarland, K. (ed.) e-butterfly.org.
107	Parks Canada. 2010. Specimens in or near National Parks in Atlantic Canada. Canadian National Museum, 3925 recs.
105	Wilhelm, S.I. et al. 2011. Colonial Waterbird Database. Canadian Wildlife Service, Sackville, 2698 sites, 9718 recs (8192 obs).
103	Neily, T.H. & Pepper, C.; Toms, B. 2020. Nova Scotia lichen database [as of 2020-05-25]. Mersey Tobeatic Research Institute, 668 recs.
99	LaPaix, R.W.; Crowell, M.J.; MacDonald, M. 2011. Stantec rare plant records, 2010-11. Stantec Consulting, 334 recs.
99	Zinck, M. & Roland, A.E. 1998. Roland's Flora of Nova Scotia. Nova Scotia Museum, 3rd ed., rev. M. Zinck; 2 Vol., 1297 pp.
98	Blaney, C.S. 2000. Fieldwork 2000. Atlantic Canada Conservation Data Centre. Sackville NB, 1265 recs.
95	Breen, A. 2019. 2019 Atlantic Whitefish observations. Coastal Action, 95 recs.
95	McNeil, J.A. 2019. Eastern Painted Turtle trapping records, 2017. Mersey Tobeatic Research Institute.
95	Patrick, A.; Horne, D.; Noseworthy, J. et al. 2017. Field data for Nova Scotia and New Brunswick, 2015 and 2017. Nature Conservancy of Canada.
93	Mazerolle, D.M. 2018. Atlantic Canada Conservation Data Centre botanical fieldwork 2018. Atlantic Canada Conservation Data Centre, 13515 recs.
93	Roland, A.E. & Smith, E.C. 1969. The Flora of Nova Scotia, 1st Ed. Nova Scotia Museum, Halifax, 743pp.
92	Pepper, C. 2013. 2013 rare bird and plant observations in Nova Scotia. , 181 records.
88	Benjamin, L.K. (compiler). 2001. Significant Habitat & Species Database. Nova Scotia Dept of Natural Resources, 15 spp, 224 recs.
88	LaPaix, R.W.; Crowell, M.J.; MacDonald, M.; Neily, T.D.; Quinn, G. 2017. Stantec Nova Scotia rare plant records, 2012-2016. Stantec Consulting.
82	Roland, A.E. 1976. The Coastal Plain Flora of Kejimikujik National Park. Parks Canada Report, 238 pp.
80	Belliveau, A. 2013. Rare species records from Nova Scotia. Mersey Tobeatic Research Institute, 296 records. 296 recs.
79	Herman, T.B. & Power, T.D., Eaton, B. 1995. Population status of Blanding's Turtle ( <i>Emydoidea blandingii</i> ) in Nova Scotia. Can. Field-Nat., 109: 182-191. 79 recs.
76	Bryson, I. 2020. Nova Scotia and Newfoundland rare species observations, 2018-2020. Nova Scotia Environment.
76	Cameron, R.P. 2009. Cyanolichen database. Nova Scotia Environment & Labour, 1724 recs.
75	Nussey, Pat & NCC staff. 2019. AEI tracked species records, 2016-2019. Chapman, C.J. (ed.) Atlantic Canada Conservation Data Centre, 333.
71	McNeil, J.A. 2019. Snapping Turtle records, 2019. Mersey Tobeatic Research Institute.
68	McNeil, J.A. 2017. Updates to Blanding's Turtle database, 1984-2014. Mersey Tobeatic Research Institute.
62	McNeil, J.A. 2013. Ribbonsnake ( <i>Thamnophis sauritus</i> ) sightings, 2012. Parks Canada, 63 records of 26+ individuals.
60	Amirault, D.L. & McKnight, J. 2003. Piping Plover Database 1991-2003. Canadian Wildlife Service, Sackville, unpublished data. 7 recs.
59	Ogden, J. NS DNR Butterfly Collection Dataset. Nova Scotia Department of Natural Resources. 2014.
58	Benedict, B. Connell Herbarium Specimens. University New Brunswick, Fredericton. 2003.
57	Blaney, C.S. 2017. Atlantic Canada Conservation Data Centre Fieldwork 2017. Atlantic Canada Conservation Data Centre.
56	Belliveau, A.G., Churchill, J.L. 2019. Compilation of flora and fauna observation records from Isle Haute, Nova Scotia. Acadia University; Atlantic Canada Conservation Data Centre, 522 recs.
53	Bayne, D.M. 2007. Atlantic Coastal Plain Flora record, 2004-06. Nova Scotia Nature Trust. Pers. comm. to C.S. Blaney, 57 recs.
52	Blaney, C.S.; Spicer, C.D. 2001. Fieldwork 2001. Atlantic Canada Conservation Data Centre. Sackville NB, 981 recs.
50	Churchill, J.L.; Klymko, J.D. 2015. Chignecto and Tintamarre National Wildlife Area Bird Surveys 2015. Atlantic Canada Conservation Data Centre, 2238 recs.
49	Neily, T.H. 2019. Tom Neily NS Bryophyte records (2009-2013). T.H. Neily, Atlantic Canada Conservation Data Centre, 1029 specimen records.

# recs	CITATION
47	Blaney, C.S & Spicer, C.D.; Popma, T.M.; Basquill, S.P. 2003. Vascular Plant Surveys of Northumberland Strait Rivers & Amherst Area Peatlands. Nova Scotia Museum Research Grant, 501 recs.
47	MacDonald, E.C. 2018. Piping Plover nest records from 2010-2017. Canadian Wildlife Service.
46	Hall, R.A. 2001. S. NS Freshwater Mussel Fieldwork. Nova Scotia Dept Natural Resources, 178 recs.
46	Richardson, D., Anderson, F., Cameron, R, McMullin, T., Clayden, S. 2014. Field Work Report on Black Foam Lichen ( <i>Anzia colpodes</i> ). COSEWIC.
45	Wallace, S. 2020. Stewardship Department species occurrence data on NTNB preserves. Nature Trust of New Brunswick.
44	Ferguson, D.C. 1954. The Lepidoptera of Nova Scotia. Part I, macrolepidoptera. Proceedings of the Nova Scotian Institute of Science, 23(3), 161-375.
44	Hall, R.A. 2003. NS Freshwater Mussel Fieldwork. Nova Scotia Dept Natural Resources, 189 recs.
44	McLean, K. 2019. Wood Turtle observations . Clean Annapolis River Project.
42	Klymko, J.J.D. 2018. 2017 field data. Atlantic Canada Conservation Data Centre.
41	Blaney, C.S.; Spicer, C.D.; Rothfels, C. 2004. Fieldwork 2004. Atlantic Canada Conservation Data Centre. Sackville NB, 1343 recs.
40	Cameron, E. 2007. Canadian Gypsum Co. survey 2005-07. Dillon Consulting Ltd, 40 recs.
39	Klymko, J.J.D.; Robinson, S.L. 2012. 2012 field data. Atlantic Canada Conservation Data Centre, 447 recs.
38	Tranquilla, L. 2015. Maritimes Marsh Monitoring Project 2015 data. Bird Studies Canada, Sackville NB, 5062 recs.
36	Blaney, C.S. 2019. Sean Blaney 2019 field data. Atlantic Canada Conservation Data Centre, 4407 records.
36	McNeil, J.A. 2017. Eastern Ribbonsnake ( <i>Thamnophis sauritus</i> ) sightings, 2017. Mersey Tobeatic Research Institute, 36 recs.
34	Blaney, C.S. 2003. Fieldwork 2003. Atlantic Canada Conservation Data Centre. Sackville NB, 1042 recs.
33	Neily, T.H. 2017. Nova Scotia lichen records. Mersey Tobeatic Research Institute.
33	Newell, R.E. 2019. <i>Crocianthemum canadense</i> records compiled for provincial status report. pers. comm. from Ruth Newell to AC CDC.
32	Chapman, C.J. 2018. Atlantic Canada Conservation Data Centre botanical fieldwork 2018. Atlantic Canada Conservation Data Centre, 11171 recs.
32	Frittaion, C. 2012. NSNT 2012 Field Observations. Nova Scotia Nature Trust, Pers comm. to S. Blaney Feb. 7, 34 recs.
32	Neily, T.H. & Pepper, C.; Toms, B. 2013. Nova Scotia lichen location database. Mersey Tobeatic Research Institute, 1301 records.
32	Roland, A.E. 1980. Checklist of Vascular Plants of Kejimikujik National Park in Lichens, Liverworts, Mosses and Flowering Plants of Kejimikujik National Park. Roland, A.E. (ed.) Parks Canada Report, pp. 52-140, 160 pp.
31	Jobin, C. & Clow, A., Van Dijk, J. 2019. Eastern Waterfan data, Mount Allison Fundy Field Camp 2019. Chapman, C.J. (ed.) Fundy National Park and Mount Allison University, 31 recs.
31	MacDonald, E.C. 2018. CWS Piping Plover Census, 2010-2017. Canadian Wildlife Service, 672 recs.
30	Neily, T.H. & Pepper, C.; Toms, B. 2020. Nova Scotia lichen database [as of 2020-03-18]. Mersey Tobeatic Research Institute.
29	Canadian Wildlife Service, Dartmouth. 2010. Piping Plover censuses 2007-09, 304 recs.
29	Clayden, S. Digitization of Wolfgang Maass Nova Scotia forest lichen collections, 1964-2004. New Brunswick Museum. 2018.
29	Ogden, K. Nova Scotia Museum butterfly specimen database. Nova Scotia Museum. 2017.
27	e-Butterfly. 2018. Selected Maritimes butterfly records from 2016 and 2017. Maxim Larrivee, Sambo Zhang (ed.) e-butterfly.org.
26	McLean, K. 2020. Wood Turtle observations . Clean Annapolis River Project.
26	Neily, T.H. 2013. Email communication to Sean Blaney regarding <i>Listera australis</i> observations made from 2007 to 2011 in Nova Scotia. , 50.
26	Tims, J. & Craig, N. 1995. Environmentally Significant Areas in New Brunswick (NBESA). NB Dept of Environment & Nature Trust of New Brunswick Inc, 6042 recs. <a href="https://doi.org/10.1037/arc0000014">https://doi.org/10.1037/arc0000014</a> .
25	Blaney, C.S.; Spicer, C.D.; Popma, T.M.; Hanel, C. 2002. Fieldwork 2002. Atlantic Canada Conservation Data Centre. Sackville NB, 2252 recs.
25	Burnie, B. 2013. 2013 <i>Scirpus longii</i> field data. Mount Saint Vincent University, 51 recs.
25	Cameron, R.P. 2018. <i>Degelia plumbea</i> records. Nova Scotia Environment.
25	Churchill, J.L.; Walker, J. 2017. Species at Risk Surveys at Correctional Services Canada Properties in Nova Scotia and New Brunswick. Atlantic Canada Conservation Data Centre.
25	McNeil, J.A. 2019. Snapping Turtle records, 2017. Mersey Tobeatic Research Institute.
25	Richardson, D., Anderson, F., Cameron, R, Pepper, C., Clayden, S. 2015. Field Work Report on the Wrinkled Shingle lichen ( <i>Pannaria lurida</i> ). COSEWIC.
24	Brodgers, H.G. 2006. Unpublished data. , 24 recs.
24	Clayden, S.R. 1998. NBM Science Collections databases: vascular plants. New Brunswick Museum, Saint John NB, 19759 recs.
24	Manthorne, A. 2019. Incidental aerial insectivore observations. Birds Canada.
24	Porter, C.J.M. 2014. Field work data 2007-2014. Nova Scotia Nature Trust, 96 recs.
23	Benjamin, L.K. 2011. NSDNR fieldwork & consultant reports 1997, 2009-10. Nova Scotia Dept Natural Resources, 85 recs.
23	NS DNR. 2017. Black Ash records from NS DNR Permanent Sample Plots (PSPs), 1965-2016. NS Dept of Natural Resources.
22	Breen, A. 2018. 2018 Atlantic Whitefish observations. Coastal Action.
22	Bryson, I. 2013. Nova Scotia rare plant records. CBCL Ltd., 180 records.
22	McLean, K. 2019. Species At Risk observations. Clean Annapolis River Project.
22	Nelly, T.H. 2006. <i>Cyrtopodium arietinum</i> in Hants Co. Pers. comm. to C.S. Blaney. 22 recs, 22 recs.
21	MacKinnon, D.S. & O'Brien, M.K.H.; Cameron, R.P. 2002. Fieldwork 2000. Dept of Environment & Labour, Protected Areas Branch, 252 recs.
20	Benjamin, L.K. 2012. NSDNR fieldwork & consultant reports 2008-2012. Nova Scotia Dept Natural Resources, 196 recs.
20	O'Grady, Sally. 2010. Water Pennywort in Kejimikujik National Park, 2010. Parks Canada, 20 shapefiles.
20	Pepper, Chris. 2012. Observations of breeding Canada Warbler's along the Eastern Shore, NS. Pers. comm. to S. Blaney, Jan. 20, 28 recs.
20	Wilhelm, S.I. et al. 2019. Colonial Waterbird Database. Canadian Wildlife Service.
19	Benedict, B. Connell Herbarium Specimens (Data) . University New Brunswick, Fredericton. 2003.
19	Oldham, M.J. 2000. Oldham database records from Maritime provinces. Oldham, M.J; ONHIC, 487 recs.
19	Robinson, S.L. 2014. 2013 Field Data. Atlantic Canada Conservation Data Centre.
18	Bagnell, B.A. 2001. New Brunswick Bryophyte Occurrences. B&B Botanical, Sussex, 478 recs.
18	Basquill, S.; Sam, D. 2019. <i>Crocianthemum canadense</i> observations near Greenwood, NS, 2015-2019. pers. commun. from Nova Scotia Department of Lands and Forestry to AC CDC, 18 recs.

# recs	CITATION
18	Basquill, S.P. 2003. Fieldwork 2003. Atlantic Canada Conservation Data Centre, Sackville NB, 69 recs.
18	Sollows, M.C., 2008. NBM Science Collections databases: mammals. New Brunswick Museum, Saint John NB, download Jan. 2008, 4983 recs.
17	Blaney, C.S. 2018. Atlantic Canada Conservation Data Centre Fieldwork 2018. Atlantic Canada Conservation Data Centre.
17	Goltz, J.P. & Bishop, G. 2005. Confidential supplement to Status Report on Prototype Quillwort ( <i>Isoetes prototypus</i> ). Committee on the Status of Endangered Wildlife in Canada, 111 recs.
17	Klymko, J.J.D.; Robinson, S.L. 2014. 2013 field data. Atlantic Canada Conservation Data Centre.
17	Munro, Marian K. Nova Scotia Provincial Museum of Natural History Herbarium Database. Nova Scotia Provincial Museum of Natural History, Halifax, Nova Scotia. 2014.
16	Adams, J. & Herman, T.B. 1998. Thesis, Unpublished map of <i>C. insculpta</i> sightings. Acadia University, Wolfville NS, 88 recs.
16	Basquill, S.P. 2012. 2012 rare vascular plant field data. Nova Scotia Department of Natural Resources, 37 recs.
16	Basquill, S.P., Porter, C. 2019. Bryophyte and lichen specimens submitted to the E.C. Smith Herbarium. NS Department of Lands and Forestry.
16	Cameron, R.P. 2009. Erioderma pedicellatum database, 1979-2008. Dept Environment & Labour, 103 recs.
16	Holder, M. 2003. Assessment and update status report on the Eastern <i>Lilaeopsis</i> ( <i>Lilaeopsis chinensis</i> ) in Canada. Committee on the Status of Endangered Wildlife in Canada, 16 recs.
15	Basquill, S.P. 2011 vascular plant field data. Nova Scotia Department of Natural Resources, 37 recs.
15	Benjamin, L.K. 2009. NSDNR Fieldwork & Consultants Reports. Nova Scotia Dept Natural Resources, 143 recs.
15	Edsall, J. 2007. Personal Butterfly Collection: specimens collected in the Canadian Maritimes, 1961-2007. J. Edsall, unpubl. report, 137 recs.
15	Klymko, J.J.D. 2012. Odonata specimens & observations, 2010. Atlantic Canada Conservation Data Centre, 425 recs.
15	Powell, B.C. 1967. Female sexual cycles of <i>Chrysemy spicta</i> & <i>Clemmys insculpta</i> in Nova Scotia. Can. Field-Nat., 81:134-139. 26 recs.
14	McNeil, J.A. 2018. Snapping Turtle records, 2018. Mersey Tobeatic Research Institute.
13	Archibald, D.R. 2003. NS Freshwater Mussel Fieldwork. Nova Scotia Dept Natural Resources, 213 recs.
13	Brunelle, P.-M. (compiler). 2010. ADIP/MDDS Odonata Database: NB, NS Update 1900-09. Atlantic Dragonfly Inventory Program (ADIP), 935 recs.
13	Cameron, R.P. 2013. 2013 rare species field data. Nova Scotia Department of Environment, 71 recs.
13	MacKinnon, D.S. 1998. Ponhook Lake survey map & notes. Dept of Environment and Labour, Protected Areas Branch, 13 recs.
13	Nova Scotia Nature Trust. 2013. Nova Scotia Nature Trust 2013 Species records. Nova Scotia Nature Trust, 95 recs.
13	Nova Scotia Nature Trust. 2014. Lady'slipper records from Saint Croix Nova Scotia, JLC Ed. Nova Scotia Nature Trust.
12	Cameron, R.P. 2011. Lichen observations, 2011. Nova Scotia Environment & Labour, 731 recs.
12	Downes, C. 1998-2000. Breeding Bird Survey Data. Canadian Wildlife Service, Ottawa, 111 recs.
12	Holder, M.L.; Kingsley, A.L. 2000. Kinglsey and Holder observations from 2000 field work.
12	Phinney, Lori; Toms, Brad; et. al. 2016. Bank Swallows ( <i>Riparia riparia</i> ) in Nova Scotia: inventory and assessment of colonies. Merser Tobeiatc Research Institute, 25 recs.
11	Benedict, B. Connell Herbarium Specimen Database Download 2004. Connell Memorial Herbarium, University of New Brunswick. 2004.
11	Bredin, K.A. 2002. NS Freshwater Mussel Fieldwork. Atlantic Canada Conservation Data Center, 30 recs.
11	Clayden, S.R. 2005. Confidential supplement to Status Report on Ghost Antler Lichen ( <i>Pseudevernia cladonia</i> ). Committee on the Status of Endangered Wildlife in Canada, 27 recs.
11	Haugthian, S.R. 2018. Description of <i>Fuscopannaria leucosticta</i> field work in 2017. New Brunswick Museum, 314 recs.
10	Belliveau, A.G. & Vail, Cole; King, Katie. 2020. New <i>Allium tricoccum</i> locations, Cornwallis River. Chapman, C.J. (ed.) Acadia University.
10	Neily, T. H. 2018. Lichen and Bryophyte records, AEI 2017-2018. Tom Neily; Atlantic Canada Conservation Data Centre.
10	Olsen, R. Herbarium Specimens. Nova Scotia Agricultural College, Truro. 2003.
10	Parker, M.S.R. 2011. Hampton Wind Farm 2010: significant floral/faunal observations. , 13 recs.
10	Phinney, L. 2019. Little Brown Myotis maternal colony counts and birdSAR, 2019. Mersey Tobeatic Research Institute.
10	Webster, R.P. Atlantic Forestry Centre Insect Collection, Maritimes butterfly records. Natural Resources Canada. 2014.
9	Basquill, S.P. 2009. 2009 field observations. Nova Scotia Dept of Natural Resources.
9	Benjamin, L.K. 2009. Boreal Felt Lichen, Mountain Avens, Orchid and other recent records. Nova Scotia Dept Natural Resources, 105 recs.
9	Caissie, A. Herbarium Records. Fundy National Park, Alma NB. 1961-1993.
9	Clayden, S.R. 2007. NBM Science Collections databases: vascular plants. New Brunswick Museum, Saint John NB, download Mar. 2007, 6914 recs.
9	Erskine, A.J. 1999. Maritime Nest Records Scheme (MNRS) 1937-1999. Canadian Wildlife Service, Sackville, 313 recs.
9	Klymko, J. 2019. Atlantic Canada Conservation Data Centre zoological fieldwork 2018. Atlantic Canada Conservation Data Centre.
9	Popma, T.M. 2003. Fieldwork 2003. Atlantic Canada Conservation Data Centre. Sackville NB, 113 recs.
9	Toms, Brad. 2011. Species at Risk data from 2011 field surveys. Mersey Tobeatic Research Institute, 17 recs.
9	White, S. 2019. Notable species sightings, 2018. East Coast Aquatics.
8	Cameron, R.P. 2014. 2013-14 rare species field data. Nova Scotia Department of Environment, 35 recs.
8	Kennedy, B.; Cron, C. 2019. observations of Poison Sumac and Buttonbush, Nova Scotia. pers. commun to AC CDC.
8	Klymko, J. Butterfly records at the Nova Scotia Museum not yet accessioned by the museum. Atlantic Canada Conservation Data Centre. 2017.
8	NatureServe Canada. 2018. iNaturalist Butterfly Data Export . iNaturalist.org and iNaturalist.ca.
8	Thomas, A.W. 1996. A preliminary atlas of the butterflies of New Brunswick. New Brunswick Museum.
7	Boyne, A.W. & Grecian, V.D. 1999. Tern Surveys. Canadian Wildlife Service, Sackville, unpublished data. 23 recs.
7	Cameron, B. 2006. <i>Hepatica americana</i> Survey at Scotia Mine Site in Gays River, and Discovery of Three Yellow-listed Species. Conestoga-Rovers and Associates, (a consulting firm), october 25. 7 recs.
7	Gilhen, J. 1984. Amphibians & Reptiles of Nova Scotia, 1st Ed. Nova Scotia Museum, 164pp.
7	Pardieck, K.L. & Ziolkowski Jr., D.J.; Hudson, M.-A.R. 2014. North American Breeding Bird Survey Dataset 1966 - 2013, version 2013.0. U.S. Geological Survey, Patuxent Wildlife Research Center < <a href="http://www.pwrc.usgs.gov/BBS/RawData/">www.pwrc.usgs.gov/BBS/RawData/</a> >.
6	Benjamin, L.K. 2006. <i>Cyrtopodium arietinum</i> . Pers. comm. to D. Mazerolle. 9 recs, 9 recs.
6	Brazner, J.; Hill, N. 2018. Plant observations along the Cornwallis River, Nova Scotia. Nova Scotia Department of Lands and Forestry.
6	Cameron, R.P. 2009. Nova Scotia nonvascular plant observations, 1995-2007. Nova Scotia Dept Natural Resources, 27 recs.

# recs	CITATION
6	Catling, P.M. 1981. Taxonomy of autumn-flowering <i>Spiranthes</i> species of southern Nova Scotia in Can. J. Bot. , 59:1250-1273. 30 recs.
6	Chapman, C.N. (Cody). 2020. Nova Scotia Black Ash ( <i>Fraxinus nigra</i> ) field observations by Confederacy of Mainland Mi'kmaq. Forestry Program, Confederacy of Mainland Mi'kmaq.
6	Christie, D.S. 2000. Christmas Bird Count Data, 1997-2000. Nature NB, 54 recs.
6	Kennedy, Joseph. 2010. New Brunswick Peregrine records, 2009. New Brunswick Dept Natural Resources, 19 recs (14 active).
6	Matthew Smith. 2010. Field trip report from Avon Caving Club outlining the discovery of <i>Cypripedium arietinum</i> and <i>Hepatica nobilis</i> populations. Public Works and Government Services Canada.
6	McKendry, Karen. 2016. Rare species observations, 2016. Nova Scotia Nature Trust, 19 recs.
6	Neily, T.H. & Anderson, F. 2011. Lichen observations from NRC site at Sandy Cove. , 97.
6	Neily, T.H. 2010. <i>Erioderma pedicellatum</i> records 2005-09. Mersey Tobiatic Research Institute, 67 recs.
6	Wissink, R. 2006. Fundy National Park Digital Database. Parks Canada, 41 recs.
5	Blaney, C.S.; Mazerolle, D.M.; Klymko, J; Spicer, C.D. 2006. Fieldwork 2006. Atlantic Canada Conservation Data Centre. Sackville NB, 8399 recs.
5	Cameron, R.P. 2006. <i>Erioderma pedicellatum</i> 2006 field data. NS Dept of Environment, 9 recs.
5	Cameron, R.P. 2012. Additional rare plant records, 2009. , 7 recs.
5	Cameron, R.P. 2012. Rob Cameron 2012 vascular plant data. NS Department of Environment, 30 recs.
5	Carter, Jeff; Churchill, J.; Churchill, I.; Churchill, L. 2020. Bank Swallow colony Scots Bay, NS. Atlantic Canada Conservation Data Centre.
5	Chaput, G. 2002. Atlantic Salmon: Maritime Provinces Overview for 2001. Dept of Fisheries & Oceans, Atlantic Region, Science Stock Status Report D3-14. 39 recs.
5	Honeyman, K. 2019. Unique Areas Database, 2018. J.D. Irving Ltd.
5	Klymko, J.J.D. 2011. Insect fieldwork & submissions, 2010. Atlantic Canada Conservation Data Centre. Sackville NB, 742 recs.
5	Majka, C.G. & McCorquodale, D.B. 2006. The Coccinellidae (Coleoptera) of the Maritime Provinces of Canada: new records, biogeographic notes, and conservation concerns. <i>Zootaxa</i> . <i>Zootaxa</i> , 1154: 49–68. 7 recs.
5	Plissner, J.H. & Haig, S.M. 1997. 1996 International piping plover census. US Geological Survey, Corvallis OR, 231 pp.
5	Porter, K. 2013. 2013 rare and non-rare vascular plant field data. St. Mary's University, 57 recs.
5	Tingley, S. (compiler). 2001. Butterflies of New Brunswick. , Web site: www.geocities.com/Yosemite/8425/butterfly. 142 recs.
5	Towell, C. 2014. 2014 Northern Goshawk and Common Nighthawk email reports, NS. NS Department of Natural Resources.
5	Webster, R.P. 2004. Lepidopteran Records for National Wildlife Areas in New Brunswick. Webster, 1101 recs.
5	Whittam, R.M. 1999. Status Report on the Roseate Tern (update) in Canada. Committee on the Status of Endangered Wildlife in Canada, 36 recs.
4	Bateman, M.C. 2001. Coastal Waterfowl Surveys Database, 1965-2001. Canadian Wildlife Service, Sackville, 667 recs.
4	Cameron, R.P. 2017. 2017 rare species field data. Nova Scotia Environment, 64 recs.
4	Clerc, P. 2011. Notes on the genus <i>Usnea</i> Adanson (lichenized Ascomycota). III. <i>Bibliotheca Lichenologica</i> , 106, 41-51.
4	Cody, W.J. 2003. Nova Scotia specimens of <i>Equisetum pratense</i> at the DAO herbarium in Ottawa. , Pers. comm. to C.S. Blaney. 4 recs.
4	Forsythe, B. 2006. <i>Cypripedium arietinum</i> at Meadow Pond, Hants Co. Pers. comm. to C.S. Blaney. 4 recs, 4 recs.
4	Klymko, J. Dataset of butterfly records at the New Brunswick Museum not yet accessioned by the museum. Atlantic Canada Conservation Data Centre. 2016.
4	Klymko, J.J.D. 2016. 2015 field data. Atlantic Canada Conservation Data Centre.
4	Mills, Pamela. 2007. <i>Iva frutescens</i> records. Nova Scotia Dept of Natural Resources, Wildlife Div. Pers. comm. to S. Basquill, 4 recs.
4	Newell, R. & Neily, T.; Toms, B.; Proulx, G. et al. 2011. NCC Properties Fieldwork in NS: August-September 2010. Nature Conservancy Canada, 106 recs.
4	Toms, B. 2015. <i>Lophiola aurea</i> (Goldencrest) records from Molega Lake. Mersey Tobeatic Research Institute, 4 records.
4	Toms, B. 2016. Email list of four GPS locations of Golden Crest ( <i>Lophiola aurea</i> ) from the previously documented site on Molega Lake, NS. Mersey Tobeatic Research Institute, 4 records.
4	Wissink, R. 2000. Rare Plants of Fundy: maps. Parks Canada, 20 recs.
4	Anon. 2017. Export of Maritimes Butterfly records. Global Biodiversity Information Facility (GBIF).
3	Bradford, R. 2004. <i>Coregonus huntsmani</i> locations. Dept of Fisheries & Oceans, Atlantic Region, Pers. comm. to K. Bredin. 4 recs.
3	Doubt, J. 2013. Email to Sean Blaney with Nova Scotia records of <i>Fissidens exilis</i> at Canadian Museum of Nature. pers. comm., 3 records.
3	Hill, N. and D. Patriquin. 2013. 2013 rare plant observations in Williams Lake Backlands area. Fern Hill Institute of Plant Conservation, Berwick, Nova Scotia, 3 records.
3	Hill, N.M., Myra, M. 2017. Email to Sean Blaney regarding rich intervale flora on Nictaux River. Fern Hill Institute, 3 records.
3	Hinds, H.R. 1992. Rare Vascular Plants of Fundy National Park. , 10 recs.
3	McAlpine, D.F. 1998. NBM Science Collections databases to 1998. New Brunswick Museum, Saint John NB, 241 recs.
3	Mills, Pamela. 2008. <i>Clethra alnifolia</i> at Mudflat Lake. Nova Scotia Dept of Natural Resources, Wildlife Div. Pers. comm. to D.M. Mazerolle, 4 recs.
3	Neily, T.H. & Pepper, C.; Toms, B. 2015. Nova Scotia lichen location database [as of 2015-02-15]. Mersey Tobeatic Research Institute, 1691 records.
3	Newell, R. E., MacKinnon, C. M. & Kennedy, A. C. 2006. Botanical Survey of Boot Island National Wildlife Area, Nova Scotia, 2004. Canadian Wildlife Service, Atlantic Region, Technical Report Series Number 450. 3 recs.
3	Nova Scotia Department of Lands and Forestry. 2018. Wood Turtle observations in, or near, the cornwallis River watershed. NS DLF, pers. comm. to AC CDC.
3	Pike, E., Tingley, S. & Christie, D.S. 2000. Nature NB Listserve. University of New Brunswick, listserv.unb.ca/archives/naturenb. 68 recs.
3	Sabine, M. 2016. NB DNR staff incidental Black Ash observations. New Brunswick Department of Natural Resources.
3	Sollows, M.C., 2009. NBM Science Collections databases: molluscs. New Brunswick Museum, Saint John NB, download Jan. 2009, 6951 recs (2957 in Atlantic Canada).
3	Speers, L. 2008. Butterflies of Canada database: New Brunswick 1897-1999. Agriculture & Agri-Food Canada, Biological Resources Program, Ottawa, 2048 recs.
3	Staicer, C. 2013. Personal communication concerning <i>Hirundo rustica</i> nesting in and around Kejimikujik NP, NS. Pers. comm.
3	Thompson, R. 2018. Williamsdale Quarry Expansion Project, NS, Environmental Assessment rare plants. Dexter Construction Company Limited.
3	White, S. 2018. Notable species sightings, 2016-2017. East Coast Aquatics.
2	Amiro, Peter G. 1998. Atlantic Salmon: Inner Bay of Fundy SFA 22 & part of SFA 23. Dept of Fisheries & Oceans, Atlantic Region, Science Stock Status Report D3-12. 4 recs.
2	Basquill, S.P. 2011. Field observations & specimen collections, 2010. Nova Scotia Department of Natural Resources, Pers. comm. , 8 Recs.
2	Basquill, S.P. 2018. Various specimens, NS DNR field work. NS Department of Natural Resources, 10.
2	Belliveau, A. & Toms, B. 2012. Email regarding <i>Lophiola aurea</i> (Goldencrest) location on Molega Lake, NS. Mersey Tobeatic Research Institute, 3 records.

# recs	CITATION
2	Belliveau, A. 2013. email to Sean Blaney regarding <i>Listera australis</i> observations in SW Nova Scotia. Mersey Tobeatic Research Institute, 8.
2	Belliveau, A.G. E.C. Smith Herbarium Specimen Database 2019. E.C. Smith Herbarium, Acadia University. 2019.
2	Benedict, B. Connell Herbarium Specimens. Digital photos. University New Brunswick, Fredericton. 2005.
2	Blaney, C.S. 1999. Fieldwork 1999. Atlantic Canada Conservation Data Centre. Sackville NB, 292 recs.
2	COSEWIC (Committee on the Status of Wildlife in Canada). 2013. COSEWIC Assessment and Status Report on the Eastern Waterflea <i>Peltigera hydrothyrta</i> in Canada. COSEWIC, 46 pp.
2	Gilhen, J., Jones, A., McNeil, J., Tanner, A.W. 2012. A Significant Range Extension for the Eastern Ribbonsnake, <i>Thamnophis sauritus</i> , in Nova Scotia, Canada. <i>The Canadian Field-Naturalist</i> , 126(3): 231-233.
2	Goltz, J.P. 2012. Field Notes, 1989-2005. , 1091 recs.
2	Hicklin, P.W. 1995. The Maritime Shorebird Survey Newsletter. <i>Calidris</i> , No. 3. 6 recs.
2	Hill, N.M. 2013. email communications to Sean Blaney and David Mazerolle regarding the discovery of <i>Listera australis</i> populations at Black River Lake and Middlewood. , 2.
2	Hill, N.M. 2019. Observation of <i>Crocianthemum canadense</i> near Auburn, Annapolis Co. NS on May 29, 2019. Fern Hill Institute, 2 recs.
2	Hinds, H.R. 1986. Notes on New Brunswick plant collections. Connell Memorial Herbarium, unpubl, 739 recs.
2	Hinds, H.R. 1999. Connell Herbarium Database. University New Brunswick, Fredericton, 131 recs.
2	Hope, P. 2002. Field survey of <i>Goodyera pubescens</i> population at Kejimikujik National Park. Kejimikujik National Park, 3 recs.
2	Kennedy, B. & Cron, C.; Patriquin, D. 2018. Email to Sean Blaney on observations of <i>Trichostema dichotomum</i> at Shingle Lake, Nova Scotia. , 2 records.
2	Klymko, J.J.D. 2010. Miscellaneous observations reported to ACCDC (zoology). Pers. comm. from various persons, 3 recs.
2	Klymko, J.J.D. 2012. Insect fieldwork & submissions, 2011. Atlantic Canada Conservation Data Centre. Sackville NB, 760 recs.
2	LaPaix, R.; Parker, M. 2013. email to Sean Blaney regarding <i>Listera australis</i> observations near Kearney Lake. East Coast Aquatics, 2.
2	Lock, A.R., Brown, R.G.B. & Gerriets, S.H. 1994. <i>Gazetteer of Marine Birds in Atlantic Canada</i> . Canadian Wildlife Service, Atlantic Region, 137 pp.
2	Manning, I. 2020. Peregrine Falcon nest site observations. pers. comm. to J. Churchill.
2	McAlpine, D.F. 1983. Status & Conservation of Solution Caves in New Brunswick. New Brunswick Museum, Publications in Natural Science, no. 1, 28pp.
2	Mills, P. 2016. Email communication to S. Blaney, re: <i>Scirpus longii</i> at Upper Great Brook, Queens Co. NS. NS DNR, 2 recs.
2	Munro, M. 2003. <i>Caulophyllum thalictroides</i> & <i>Carex hirtifolia</i> at Herbert River, Brooklyn, NS. , Pers. comm. to C.S. Blaney. 2 recs.
2	Munro, M. 2003. <i>Dirca palustris</i> & <i>Hepatica nobilis</i> var. <i>obtusata</i> at Cogmagun River, NS. , Pers. comm. to C.S. Blaney. 2 recs.
2	Neily, T.H. Tom Neily NS Sphagnum records (2009-2014). T.H. Neily, Atlantic Canada Conservation Data Centre. 2019.
2	Neily, T.H.; Smith, C.; Whitman, E. 2011. NCC Logging Lake (Halifax Co. NS) properties baseline survey data. Nature Conservancy of Canada, 2 recs.
2	Newell, R.E. 2006. Rare plant observations in Digby Neck. Pers. comm. to S. Blaney, 6 recs.
2	Parker, M. 2016. Wood turtle ( <i>Glyptemys insculpta</i> ) Visual Surveys at Black, Wallace, Musquodobit and Sackville Rivers, Nova Scotia. East Coast Aquatics Inc., 3 records.
2	Parker, M. 2018. East Coast Aquatics ACCDC 2018 Report. East Coast Aquatics, 12 records.
2	Shafer, A.B.A., D.T. Stewart. 2006. A Disjunct Population of <i>Sorex dispar</i> (Long-Tailed Shrew) in Nova Scotia. <i>Northeastern Naturalist</i> , 13(4): 603-608.
2	Sheffield, C.S. 2004. The Rare Cleptoparasitic Bee <i>Epeoloides pilosula</i> (Hymenoptera: Apoidea: Apidae) Discovered in Nova Scotia, Canada, with Distributional Notes
2	Sollows, M.C. 2008. NBM Science Collections databases: herpetiles. New Brunswick Museum, Saint John NB, download Jan. 2008, 8636 recs.
2	Standley, L.A. 2002. <i>Carex haydenii</i> in Nova Scotia. , Pers. comm. to C.S. Blaney. 4 recs.
2	Webster, R.P. Database of R.P. Webster butterfly collection. 2017.
2	Williams, M. Cape Breton University Digital Herbarium. Cape Breton University Digital Herbarium. 2013.
1	Allan Smith. 2011. Cedar stand location at South Williamston. Abitibi Bowater, 1 Rec.
1	Amirault, D.L. 2003. 2003 Peregrine Falcon Survey. Canadian Wildlife Service, Sackville, unpublished data. 7 recs.
1	Amirault, D.L. 2005. 2005 Peregrine Falcon Survey. Canadian Wildlife Service, Sackville, unpublished data. 27 recs.
1	Amiro, Peter G. 1998. Atlantic Salmon: Southern Nova Scotia SFA 21. Dept of Fisheries & Oceans, Atlantic Region, Science. Stock Status Report D3-11. 1 rec.
1	Anon. Dataset of butterfly records for the Maritime provinces. Museum of Comparative Zoology, Harvard University. 2017.
1	Austin-Smith, P. 2014. 2014 Common Nighthawk personal communication report, NS. NS Department of Natural Resources.
1	Basquill, S. P. 2008. Nova Scotia Dept of Natural Resources.
1	Basquill, S.P. 2004. <i>C. americana</i> and <i>Sedum</i> sp records, 2002. Pers. comm. to C.S. Blaney. 2 recs, 2 recs.
1	Basquill, S.P. 2012. 2012 Bryophyte specimen data. Nova Scotia Department of Natural Resources, 37 recs.
1	Basquill, S.P.; Quigley, E. 2006. New <i>Minuartia groenlandica</i> record for NS. Pers. comm. to C.S. Blaney, Oct 6, 1 rec.
1	Basset, I.J. & Crompton, C.W. 1978. The Genus <i>Suaeda</i> (Chenopodiaceae) in Canada. <i>Canadian Journal of Botany</i> , 56: 581-591.
1	Benjamin, L.K. 2003. <i>Cyrtopodium arietinum</i> in Cogmagun River NS. Pers. comm. to S. Blaney, 1 rec.
1	Berg, L. 2020. Canada Warbler observations, Birch Lake, NS. pers. comm. to J. Churchill.
1	Bernard, Laurel. 2013. Email to Sean Blaney regarding <i>Listera australis</i> at Lake Rossignol. Nature Conservancy of Canada, 1.
1	Blaney, C.S. Miscellaneous specimens received by ACCDC (botany). Various persons. 2001-08.
1	Blaney, C.S.; Spicer, C.D.; Mazerolle, D.M. 2005. Fieldwork 2005. Atlantic Canada Conservation Data Centre. Sackville NB, 2333 recs.
1	Brach, A.R. 2019. Correspondence to Sean Blaney regarding <i>Calamagrostis cinnoides</i> specimen from Halifax NS. pers. comm., Harvard University Herbaria, 1 record.
1	Bredin, K.A. 2000. NB & NS Bog Project, fieldwork. Atlantic Canada Conservation Data Centre, Sackville, 1 rec.
1	Breen, A. 2017. 2017 Atlantic Whitefish observation. Coastal Action.
1	Bridgehouse, Derek Email to John Klymko detailing records of butterflies collected by Derek Bridgehouse in July 2017. Bridgehouse, Derek. 2017.
1	Bridgehouse, Derek. 2018. Record of <i>Callophrys henrici</i> from Nova Scotia, emailed to J. Klymko 31 May 2018. Pers. comm.
1	Bruce, J. 2014. 2014 Wood Turtle email report, Nine Mile River, NS. NS Department of Natural Resources.
1	Brunelle, P.-M. 2009. NS Power odonata records for Mersey, Tusket & Sissiboo systems. Nova Scotia Power, 218 recs.
1	Butterflies and Moths of North America. 2016. <i>Satyrion liparops</i> record from Nova Scotia gleaned from BAMONA. Lotts, Kelly (ed.) BAMONA.
1	Cameron, R.P. 2005. <i>Erioderma pedicellatum</i> unpublished data. NS Dept of Environment, 9 recs.



# recs	CITATION
1	Cook, K. 2016. Wood Turtle record. Pers comm. to Nova Scotia Department of Lands and Forestry.
1	Crowell, A. 2004. <i>Cypripedium arietinum</i> in Weir Brook, Hants Co. Pers. comm. to S. Blaney, 1 rec.
1	Crowell, M. 2013. email to Sean Blaney regarding <i>Listera australis</i> at Bear Head and Mill Cove Canadian Forces Station. Jacques Whitford Environmental Ltd., 2.
1	Crowell, M.J. Plant specimens from Nictaux, NS sent to Sean Blaney for identification. Jacques Whitford Limited. 2005.
1	deGooyer, K. 2018. <i>Chelydra serpentina</i> observation record. Nova Scotia Environment.
1	deGooyer, K. 2019. Snapping Turtle and Eastern White Cedar observations. Nova Scotia Environment.
1	Doucet, D.A. 2007. Lepidopteran Records, 1988-2006. Doucet, 700 recs.
1	Eastman, A. 2019. Snapping Turtle observation at Brookfield, Colchester Co. NS. Halifax Field Naturalists Nova Scotia Nature Archive Facebook Page, 1 record.
1	Eastman, Al. 2019. Bronze Copper observation at Brookfield, Colchester Co. NS. Halifax Field Naturalists Nova Scotia Nature Archive Facebook Page, 1 rec.
1	Edge, Thomas A. 1984. Status report on the Atlantic Whitefish ( <i>Coregonus huntsmani</i> ). Committee on the Status of Endangered Wildlife in Canada.
1	Haughian, S. 2019. <i>Pannaria lurida</i> observations in Nova Scotia and New Brunswick. Nova Scotia Museum.
1	Hill, N. 2014. 2014 Monarch email report, Bridgetown, NS. Fern Hill Institute for Plant Conservation.
1	Hill, N.; Manning, I. 2020. Wild Leek observation, Cornwallis River, NS, floodplain. pers. comm. to J. Churchill.
1	Hill, N.M. 2016. Email communications to Sean Blaney and Alain Belliveau regarding the discovery of <i>Fimbristylis autumnalis</i> on the shores of Loon Lake, Kejimikujik National Park. Pers. comm., 1 rec.
1	Hinds, H.R. 2000. Rare plants of Fundy in Rare Plants of Fundy: maps. Wissink, R. (ed.) Parks Canada, 2 recs.
1	Hope, P. 2007. Water-pennywort ( <i>Hydrocotyle umbellata</i> ) on Eil Island. Parks Canada, Kejimikujik NP, 1 record.
1	Jacques Whitford Ltd. 2003. Cananda Lily location. Pers. Comm. to S. Blaney. 2pp, 1 rec, 1 rec.
1	Johnstone, D.; Churchill J. 2014. 2014 Chimney Swift observation, Kejimikujik NP, NS. Atlantic Canada Conservation Data Centre.
1	Kennedy, B. 2019. observations of <i>Crocianthemum canadense</i> at Bangs Falls, Nova Scotia. iNaturalist.ca.
1	Kennedy, Joseph. 2010. New Brunswick Peregrine records, 2010. New Brunswick Dept Natural Resources, 16 recs (11 active).
1	Klymko, J. Acadia Univeristy Collection rare butterfly records. Atlantic Canada Conservation Data Centre. 2013.
1	Klymko, J.J.D. 2012. Insect field work & submissions. Atlantic Canada Conservation Data Centre, 852 recs.
1	Lautenschlager, R.A. 2010. Miscellaneous observations reported to ACCDC (zoology). Pers. comm. from various persons, 2 recs.
1	MacKinnon, D.; Wright, P.; Smith, D. 2014. 2014 Common Tern email report, Eastern Passage, NS. NS Department of Environment.
1	MacKinnon, D.S. 2002. Fieldwork 2002. Dept of Environment & Labour, Protected Areas Branch, 1 rec.
1	MacKinnon, D.S. 2012. <i>Goodyera pubescens</i> observation, photo. Pers. comm. to S. Blaney, Sep 18, 1 rec.
1	Manning, I. 2020. Peregrine Falcon observation. Pers. comm. to J.L. Churchill.
1	McAlpine, D.F. 1983. Species Record Cards. Fundy National Park, Library, 1 rec.
1	NatureServe Canada. 2018. iNaturalist Maritimes Butterfly Records. iNaturalist.org and iNaturalist.ca.
1	Neily, P.D. Plant Specimens. Nova Scotia Dept Natural Resources, Truro. 2006.
1	Neily, T.H. 2004. <i>Hepatica nobilis</i> var. <i>obtusata</i> record for Falmouth NS. Pers. comm. to C.S. Blaney, 1 rec.
1	Newell, R.E. 2004. <i>Hepatica nobilis</i> var. <i>obtusata</i> record. Pers. comm. to S. Blaney, 1 rec.
1	Niel, K. & Majka, C. 2008. New Records of Tiger Beetles (Coleoptera: Carabidae: Cicindelinae) in Nova Scotia. Journal of the Acadian Entomological Society, 4: 3-6.
1	O'Neil, S. 1998. Atlantic Salmon: Eastern Shore Nova Scotia SFA 20. Dept of Fisheries & Oceans, Atlantic Region, Science. Stock Status Report D3-10. 4 recs.
1	O'Neil, S. 1998. Atlantic Salmon: Northumberland Strait Nova Scotia part of SFA 18. Dept of Fisheries & Oceans, Atlantic Region, Science. Stock Status Report D3-08. 9 recs.
1	Payzant, P. 2018. Satyr Comma record from Bible Hill, NS. <a href="https://novascotiabutterflies.ca">https://novascotiabutterflies.ca</a> .
1	Phillips, B. 2017. Emails to John Klymko regarding Eastern Waterfan ( <i>Peltigera hydrothyria</i> ) occurrences in Fundy National Park. Fundy Biosphere Reserve, 3 recs.
1	Riley, J. 2019. Digby County lichen observations. Pers. comm. to J.L. Churchill, 50 recs.
1	Robicheau, C. 2019. Atlantic Canada Conservation Data Centre Fieldwork 2019. Atlantic Canada Conservation Data Centre.
1	Robinson, S.L. 2016. 2016 field data. Atlantic Canada Conservation Data Centre.
1	Scott, F.W. 1988. Status Report on the Southern Flying Squirrel ( <i>Glaucomys volans</i> ) in Canada. Committee on the Status of Endangered Wildlife in Canada, 2 recs.
1	Smith, M. 2016. Email regarding additional location of <i>Fimbristylis autumnalis</i> on shores of Loon Lake, Kejimikujik National Park. pers. comm., 1 record.
1	Sollows, M.C., 2009. NBM Science Collections databases: Coccinellid & Cerambycid Beetles. New Brunswick Museum, Saint John NB, download Feb. 2009, 569 recs.
1	Spicer, C.D. & Harries, H. 2001. Mount Allison Herbarium Specimens. Mount Allison University, 128 recs.
1	Stewart, P. 2013. email to Sean Blaney regarding the discovery of a <i>Listera australis</i> population at Blockhouse. EnviroSphere Consultants Limited, 1.
1	Timmons, M. 2019. Telephone report of <i>Polygala polygama</i> at Aylesford Mountain, Kings Co., NS by Megan Timmons to C.S. Blaney. , 1 record.
1	Toms, Brad. 2009. New <i>Scirpus longii</i> record on Lake Rossignol. Mersey Tobeatic Research Institute.
1	Vinson, Neil. 2018. Record of <i>Saxifraga paniculata</i> from Fundy NP, emailed to S. Blaney 19 July 2018. Pers. comm.
1	Vinson, N. 2018. Email to S. Blaney regarding new occurrence of <i>Saxifraga paniculata</i> on Point Wolfe River. Parks Canada, 1 record.
1	Vinson, Neil. 2016. Emails to Sean Blaney regarding yellow flower ( <i>Primula veris</i> ) and coastal habitat leaf rosettes ( <i>Primula laurentiana</i> ) in Fundy National Park. pers. comm., 2 rec.
1	Weatherby, C.A. 1942. Two weeks in southwestern Nova Scotia. <i>Rhodora</i> , 44: 229-236.
1	Wilson, G. 2013. 2013 Snapping Turtle email report, Wentworth, NS. Pers. comm.
1	Wissink, R. 2000. Four-toed Salamander Survey results, 2000. Fundy National Park, Internal Documents, 1 rec.