

APPENDIX B ENGAGEMENT

APPENDIX B.1
ATLANTIC GOLD PUBLIC PERCEPTION
STUDY, MARCH 2020

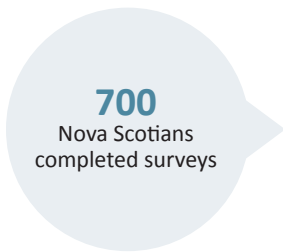
PUBLIC PERCEPTION STUDY

MARCH 2020

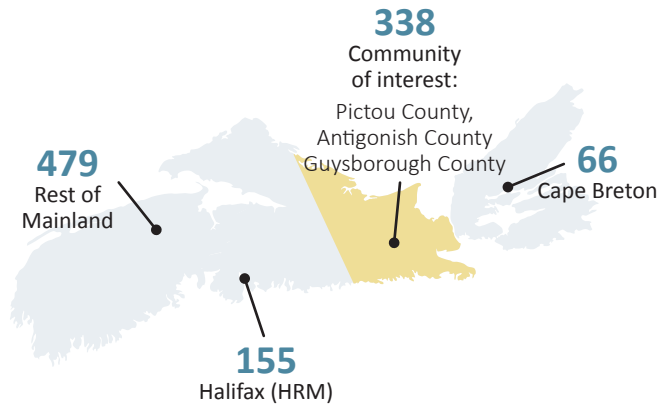
RESEARCH METHODOLOGY

In January 2020, Atlantic Gold commissioned public opinion research to gauge the opinions of Nova Scotians on the gold mining industry. A random telephone survey was conducted with 700 Nova Scotians over the age of 18. The sample was weighted by age, region and gender to ensure accurate representation of the province's population. The sample included a subset of 'communities of interest': Guysborough, Pictou, and Antigonish counties. The research sample emphasized the area around the proposed Cochrane Hill Gold Mine to ensure results could be broken out for that area and remain statistically significant.

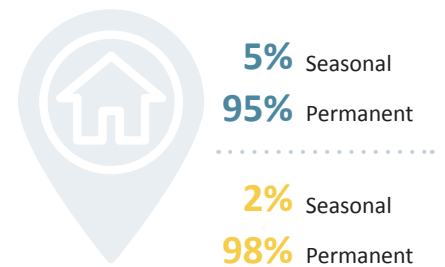
RESPONDANTS



REGION



RESIDENCE



SUMMARY OF KEY FINDINGS

AWARENESS AND SUPPORT

Overall, three-quarters of residents support gold mining in Nova Scotia. Support is slightly higher in the community of interest, with eight in ten residents expressing support. Creating jobs and contributing to the economy are the main reasons for residents support.

8 OUT OF 10

support gold mining in NS



76%

Overall

80%

Community of Interest

Top Reasons for Support	Nova Scotians	Community of Interest
Creates jobs	60%	73%
Nova Scotians Agree that Gold Mining in Nova Scotia:	Nova Scotians	Community of Interest
Contributes to the economy	66%	69%
Provides employment opportunities for local residents	63%	68%
Makes safety a top priority	60%	66%

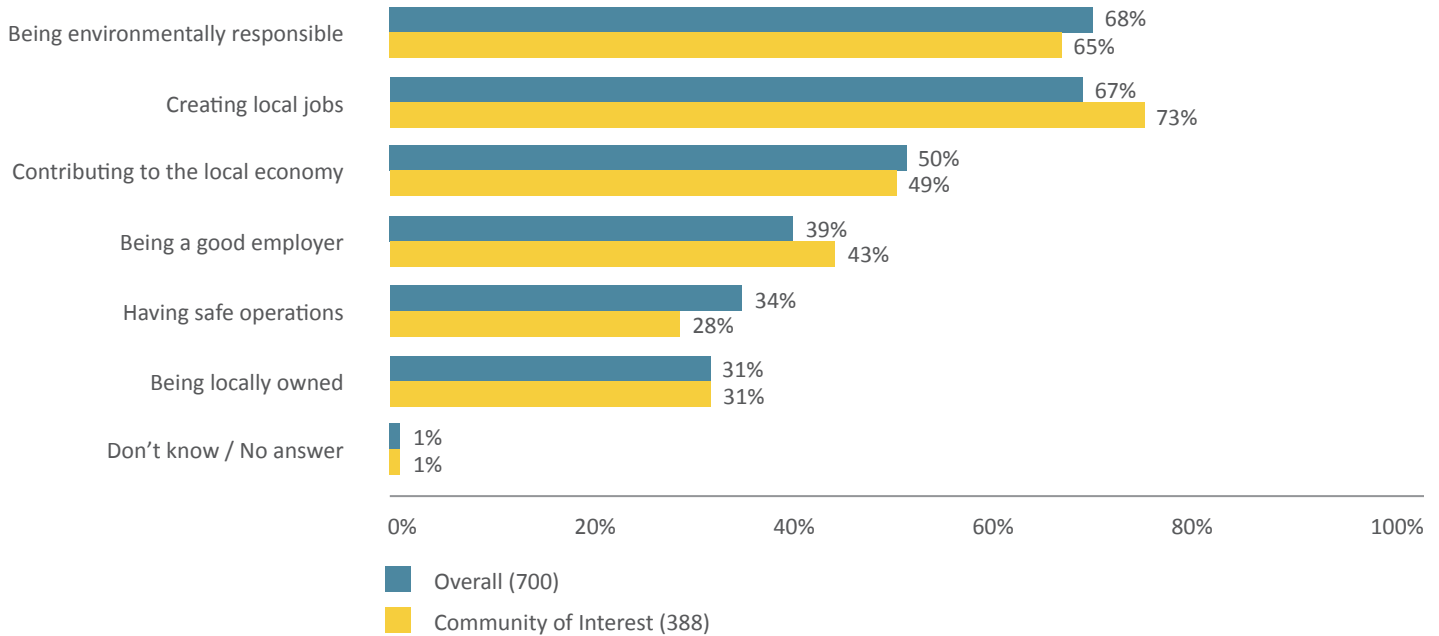
FOR MORE INFORMATION

If you have questions about the Cochrane Hill Gold Mine project, or any of Atlantic Gold's current or proposed projects, contact us at communityrelations@atlanticgold.ca.

FACTORS IMPACTING SUPPORT

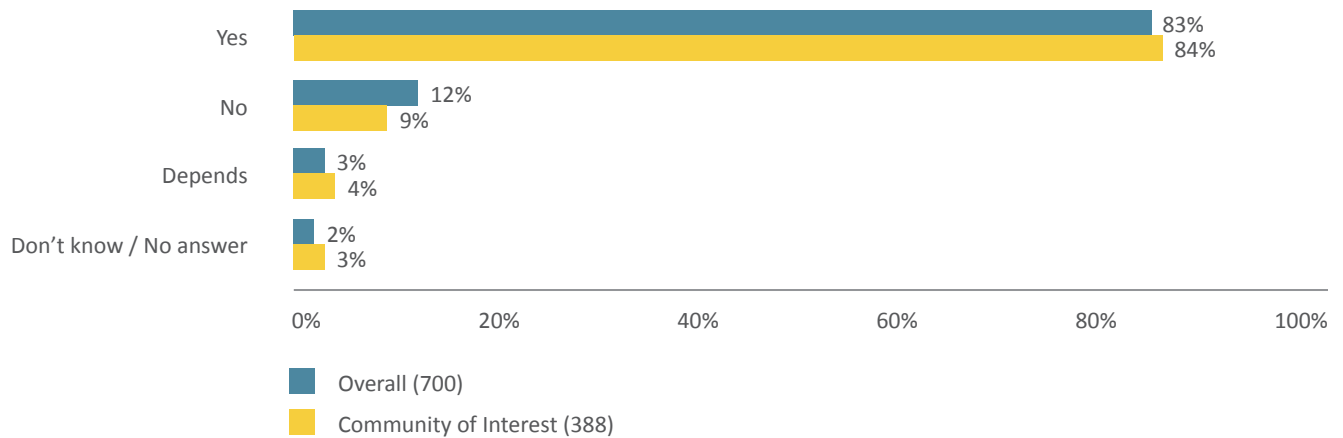
Over eight in ten residents would be more inclined to increase their support gold mining in Nova Scotia if a gold mining company were able to demonstrate there would be no negative effects on the environment. Meanwhile, one in ten residents would not change their attitude. Across communities and demographics, attitudes are highly consistent.

Factors Most Important if a New Industry Were to Open in Community Aided Key Mentions



Q3: If a new industry were to open in your community, which of the following factors would be most important to you? Please indicate your top three factors, in order of importance.

More Inclined to Support Gold Mining in Nova Scotia if Company Could Demonstrate There Would Be No Negative Effects on the Environment



Q11: If a gold mining company were able to demonstrate that there would be no negative effects on the environment, including the surrounding water, fish and other aquatic life, and the forest surrounding the mine, as a result of operations, would you be more inclined to support gold mining in Nova Scotia?

Atlantic Gold commissioned this study because are committed to helping rural Nova Scotia thrive. By creating high-paying jobs, people can build their lives here and return from working away – all while we protect the environment for generations to come.

*APPENDIX B.2
TOUQUOY MODIFICATIONS,
ENVIRONMENTAL ASSESSMENT,
WEBINAR*

Touquoy Modifications Environment Assessment Webinar

Atlantic Mining NS Inc. Touquoy Site May 31, 2021 @2.00 PM



- Background
- Highlights of Benefits
- Proposed Modifications
- Environmental Assessment
- Summary/Conclusions

- Project Components
 - Open Pit Mine
 - Plant/Mill
 - Waste Rock Storage Area
 - Tailings Management Facility
- The Touquoy Gold mine is located in Moose River, Middle Musquodoboit in an area known for historic gold mining.
- Assessment and permitting activities began in 2007 with mine production officially commencing in 2017.
- In 2019, all Atlantic Gold Operations including the Touquoy site, were acquired by the current owner, St Barbara Limited.



Touquoy Gold Mine – Economic and Community Benefits



- \$186.2 million capital investment at Touquoy between 2015-2020
- Annual operating investment of 52.7 million.
- Between 2015-2020 **400 direct and indirect jobs** (FTEs) were created by Touquoy Operations – 302 in direct employment and 98 indirect
- AMNS tax contribution calculations include both direct and indirect payment and include payroll taxes, property taxes, corporate taxes, royalties and other taxes.

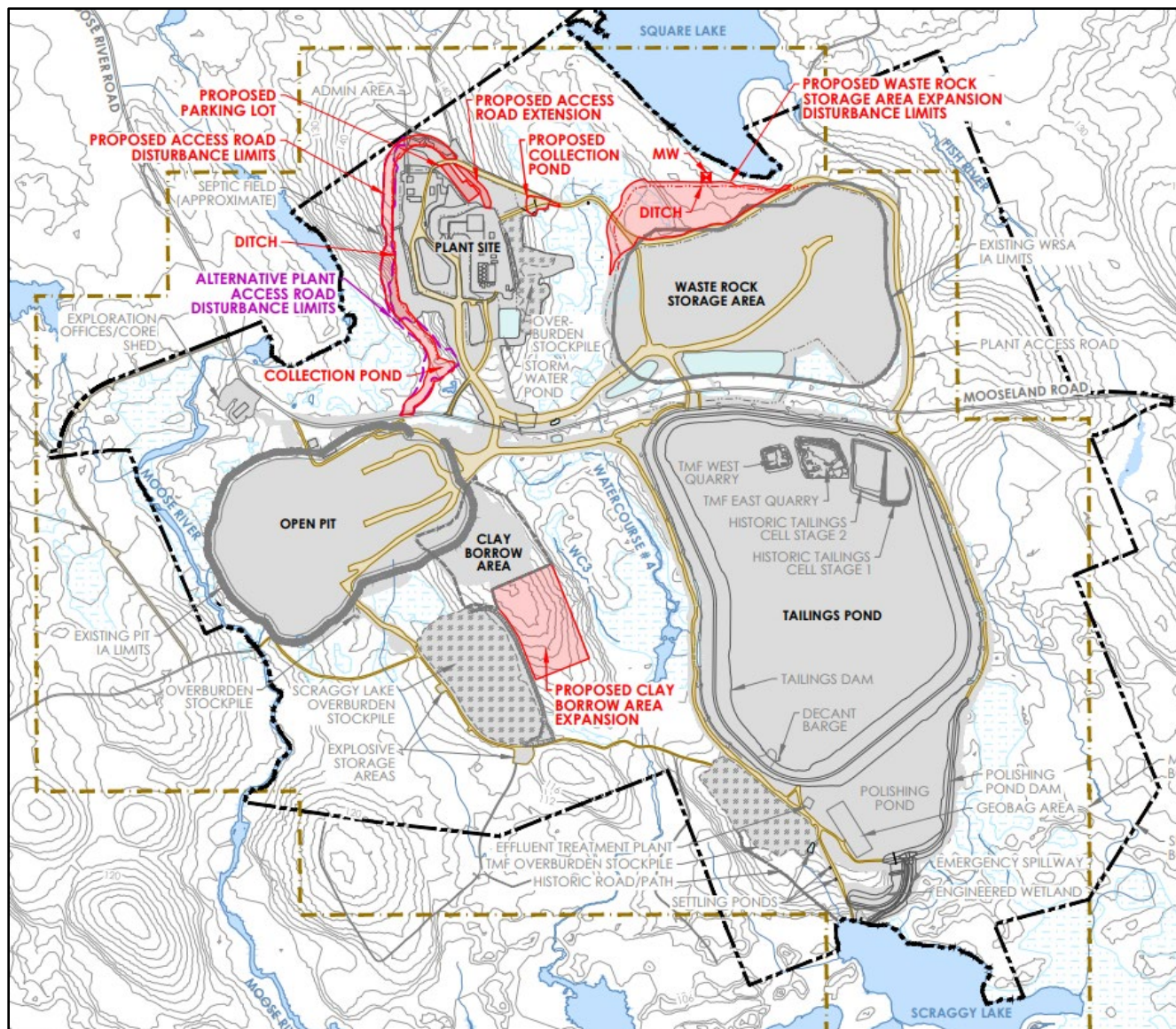
Table 1: Summary of the Economic Impact (direct and indirect) on Canada and Nova Scotia Stemming from Construction and Operation Activities for the Touquoy Gold Mine 2015-2020, in millions of dollars

In millions of dollars	Canada		Nova Scotia	
	Construction (between 2015-2020)	Operation (Per year)	Construction (between 2015-2020)	Operation (Per year)
Value added	149.2	38.1	131.6	29.8
Government revenues	11.4 <i>(federal only)</i>	4.5 <i>(federal only)</i>	7.4 <i>(provincial only)</i> 3.7 <i>(municipal only)</i>	4.9 <i>(provincial only)</i> 1.3 <i>(municipal only)</i>
In person-year (FTE equivalent)				
Jobs created	1,108	455	983	400

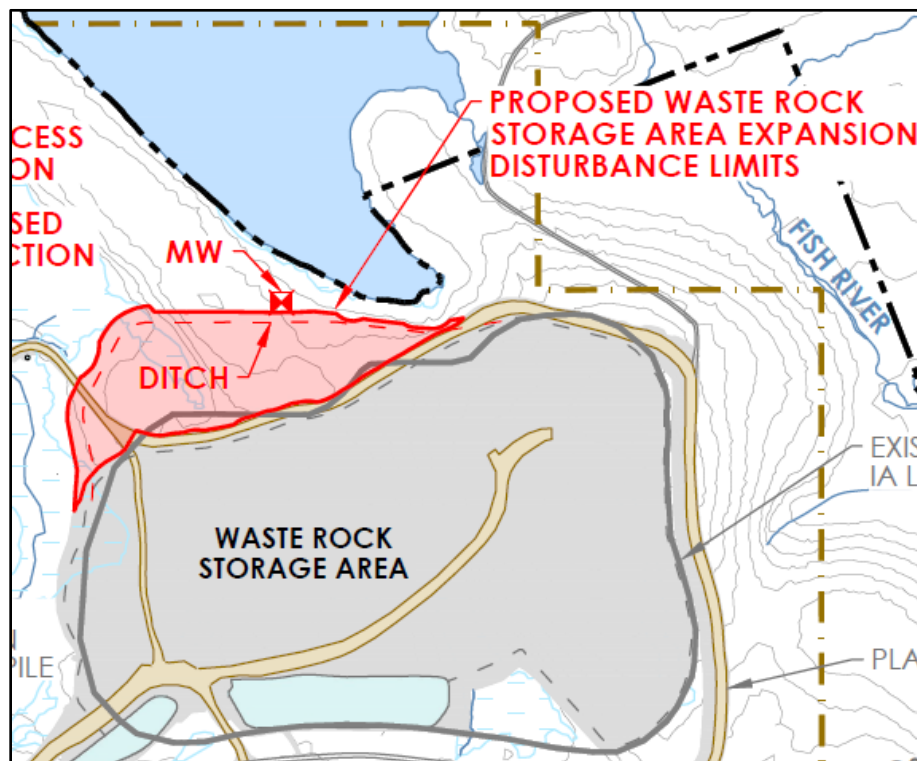
- **Community Investment Policy** support local community initiatives and projects - Camp Kidston, Braeside Seniors Home, Musquodoboit Food Bank and Musquodoboit Family Resource Centre.
- Our projects are aligned with several of the provincial goals of One NS, provincial departmental business plans and other strategic policy documents.



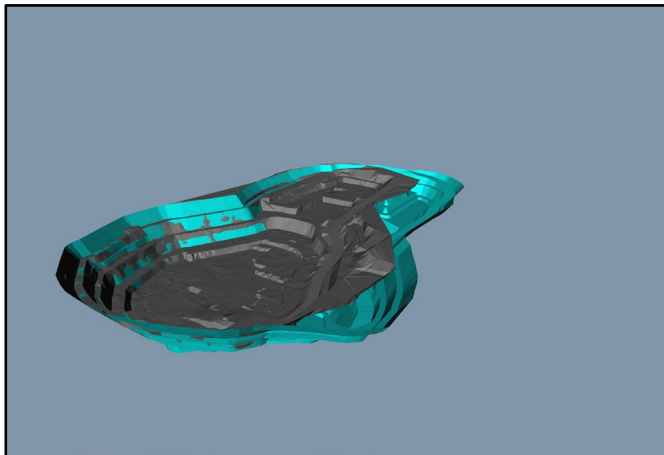
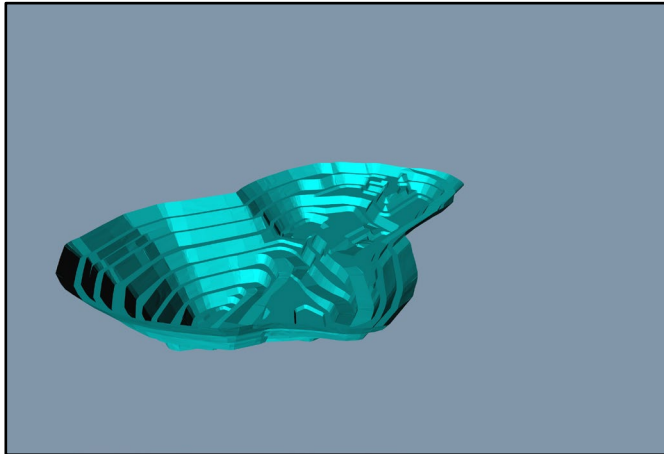
Overview of Modifications



- Waste Rock Storage Area
- In-Pit Tailings Disposal
- Clay Borrow Pit
- New Plant Access Road

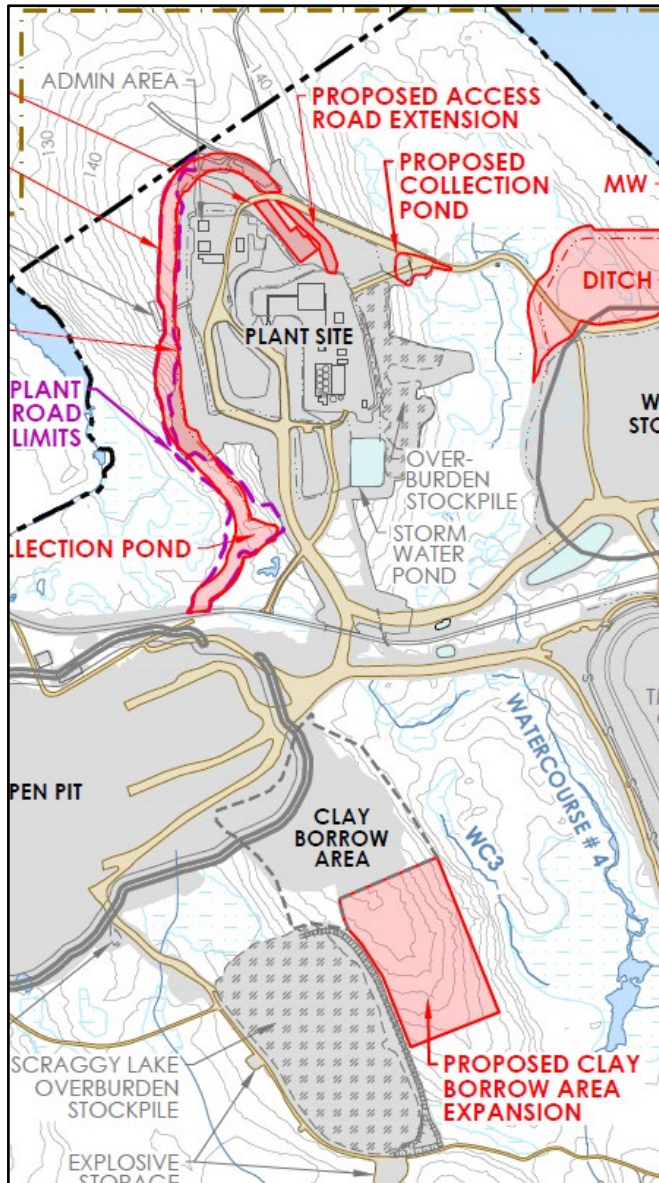


- The Waste Rock Storage Area or WRSA stores waste rock and lower-grade ore removed from the pit during mining.
- Waste rock includes rock and ore that contains minerals in concentrations too low to be economic for processing.
- The storage area is surrounded by ditching to manage surface water.
- Proposing a modification of 7.1 ha. / additional capacity bringing the total to 42.1 ha in size.



- When all the ore is removed from the pit, it will be used for tailings storage.
- Prior to in-pit tailings disposal, operations will cease, allowing for the inflow of groundwater, surface flow and precipitation to begin filling the pit.
- Once the pit begins filling with water it will allow for tailings to be deposited below the water line.
- Groundwater modelling has been undertaken to understand the potential environmental effects.

Clay Borrow Area/Plant Access Road



- Clay Borrow expansion of 5.9 ha (14.8 acres)
- Clay is used for construction and mitigation on site
- The Plant Access Road provides access to the plant site, mill facility, stockpile, and several administration buildings
- The new road will increase safety while reducing traffic on the main road

- **Land Use:** All the modifications will occur within or directly adjacent to the existing mine boundaries. No changes to existing land uses are anticipated.
- **Cultural and Heritage Resources:** A supplementary archaeological field survey was completed in 2021, including research, reconnaissance, and test-pitting in the areas not previously investigated. No cultural or heritage resources were identified.
- **Primary Mitigation/Management:** Construction and Operation are subject to the Environmental Protection Plan (EPP), which includes a Chance Find Protocol in case of discovery of archaeological resources
- **Air and Noise:** Air quality, noise, and vibration will not change substantially over the existing conditions at the mine site.



- > Groundwater and Surface water monitoring has been ongoing for current operations. This information and modelling for the modifications was used to assess potential environmental effects.
- > The modifications will change how water is managed on site. Drainage and runoff from the modifications will be managed to meet or exceed appropriate water quality criteria and/or background conditions.
- > Water quality and quantity will be maintained so that fish habitat is preserved and protected.

Surface water and Groundwater quality and quantity are subject to ongoing monitoring to verify predictions.

- > **Vegetation:** The modifications will create ground disturbance and the removal of vegetation where new infrastructure will be located. Plant species with conservation status will be protected.
- > **Wetlands:** The modifications will alter approximately 0.7 hectares of unpermitted wetland. This will require a wetland alteration permit.
- > **Wildlife:** The modifications are within or directly adjacent to previously developed mine infrastructure. No new Project interactions or additional direct or indirect impacts (e.g., sensory disturbance, attraction/avoidance) are expected with mainland moose as a result of this development.

Wetlands are subject to ongoing monitoring to verify predictions and wetland function.
Mainland Moose presence in the area is monitored through the Mainland Moose Management Plan



These modifications will preserve the life of the Touquoy Mine and benefits for Nova Scotians.

Changes to the project footprint are minimal and directly adjacent to current operations.

None of the changes are predicted to result in significant changes to the environment.

Avoidance, mitigation by design, and ongoing monitoring are tools used to protect environmental features.

Question and Answers

APPENDIX B.3
TOUQUOY GOLD PROJECT
MODIFICATIONS, ENVIRONMENTAL
ASSESSMENT, WEBINAR REPORT

Webinar - Touquoy Gold Project Modification - Environment Assessment (C-03885) 31-05-2021

GENERAL INFORMATION

Title

Webinar - Touquoy Gold Project Modification - Environment Assessment

Description

Online webinar conducted with the stakeholders to discuss the modifications at Touquoy Gold Project.

List of Panelists:

Brenna Reynolds, Dustin O'Leary, Craig Hudson, Jim Millard, Barb Bryden, Sara Wallace

List of attendees:

Betty Belmore, Jesse MacDonald, Elizabeth Illingworth, Madeline Conacher, Kathy Didkowsky, Verna Higgins, Joan Baxter, Lorne Grant, Robert Tilden, Mark Snyder, An Nguyen, Mimi O'Handley, Glenda Burrows, Kathryn Anderson

Welcom & Introduction - Dustin

Power Point Presentation - Team

Questions/Answers

1. Why doesn't AMNS have to go through a federal EA? Would AMNS agree to voluntarily go through a federal EA?

Sarah : There are triggers for a federal EA and the Touquoy project does not require a federal EA.

2. Does arsenic pose an increased threat a result of these modifications?

Sarah: No.

3 Why didn't you accommodate for these changes as part of your original EA/IA?

Craig: These changes provide an opportunity to improve safety and reduce traffic at site. Projects are always evolving and the modifications represent improvements.

4 Are the modifications linked in any way to FMS/BD or CH projects?

Craig: No, the modifications are neither linked nor driven by any of the other projects. They are strictly related to Touqouy.

5 What is the impact on the mainland moose and the recent sightings that have been reported?

Sarah/Barb/ Jim: Investigation on previous studies is an ongoing process. Three monitoring have happened and there has been good participation from the locals and indigenous groups.

6 What is the impact of these modifications on crown land?

Sarah: There will be some impact and Atlantic Gold would be applying for any required crown land. The increase is minimal

7 Are you planning to expropriate more land?

Craig: No, there is no need for expropriation.

8 What benefits will this expansion bring to the local community and to NS?

Dustin: There would be full time jobs for locals and partnership with communities.

9 There have been problems with the siltation from the borrow pit on Mooseland road. Will this borrow pit cause the same problems with sediment?

Craig: Engagement with consultants to control/avoid the situation. It is also monitored by the community.

10 What will be the impacts on Scraggy Lake?

Sarah: Atlantic Gold is engaged in doing modelling to ensure we have the right design (engineering). Any water in the Scraggy Lake would be of quality as per the standards.

11 How does this project impact the archaeological resources?

Craig: There have been Archaeological surveys conducted. There are no cultural/heritage resources. If found they would be donated to museum.

12 Will these modifications impact water quality?

Sarah: AGC will update policy if needed – engineering design/drainage infrastructure/water treatment

13 Will the modifications increase the amount of time that Touquoy will operate?

Craig: These modifications would enable AGC to continue to operate but not extend the life of the mine

14 Will there be more traffic?

Sarah: The access road will aid in improving operations thus, reduce traffic overtime.

15 What are Tailings? How Atlantic Gold Manage them?

Craig: Craig provided a definition of tailings and explained the in-pit deposition
The water used for operation is recycled and reused.

16 Do you or any of your contractors' store or use PFAS anywhere at the mine site? (Madeline Conacher)

If yes, what are the products used and for what processes? how do you know that they are not causing contamination?

if don't know: when will you provide an answer

if no: what chemicals do you use in the flotation process and your firefighting materials?

Craig: No floatation & no PFSA used.

These questions were posed in the chat box and will be responded to.

17 Can you explain ,please,why the Moose River Gold Mine Museum is not included in your community policy and is not considered a cultural and historical resource, given the potential artifacts from the historically world renowned Magill shaft?

18 Can you explain the changes to the road please? Will it change the access to the museum? (Betty Belmore)

19 Are the tailing them selves full of poisons' and will they fillup the pond or does the lake the tailings become toxic? (Robert Tilden)

Dustin thanked people for their attendance.

Chrystal

Date

2021-05-31

Origin

Internal

Type of communication

Online Meeting

Subject categories

Economic,
EIS

Projects

Touquoy

Engagement plans

Touquoy Expansion Engagement

General atmosphere

Neutral

ATTENDEES

Attendees

Manually set the number of participants

Participants (20)

No. of participants

20

Participant
Robert Tilden

Positions
Sheet Harbour and Area Chamber of Commerce

Contact
mrtilden@hotmail.ca

Present
Yes

Initiator

Stand-in
-

Participant
Mimi O'Handley

Positions
Ecology Action Centre (Wetlands & Water Officer)

Contact
mimi.ohandley@ecologyaction.ca

Present
Yes

Initiator

Stand-in
-

Participant
Sara Wallace

Positions
Stantec (Principal Consultant)

Contact
Sara.Wallace@stantec.com

Present
Yes

Initiator

Stand-in
-

Participant
Lorne Grant

Positions
-

Contact
lorne.grant@ca.dsv.com

Present
Yes

Initiator

Stand-in
-

Participant
Verna Higgins

Positions
Moose River Gold Mines Museum Society

Contact
vjhiggins@explornet.com

Present
Yes

Initiator

Stand-in
-

Participant
An Nguyen

Positions
Ecology Action Centre

Contact
an.nguyen@ecologyaction.ca

Present
Yes

Initiator

Stand-in
-

Participant
Elizabeth Illingworth

Positions
Moose River Gold Mines Museum Society

Contact
wenlock3@gmail.com

Present
Yes

Initiator

Stand-in
-

Participant
Kathryn Anderson

Positions
Sustainable Northern Nova Scotia (SuNNS)

Contact
kathrynande@gmail.com

Present
Yes

Initiator

Stand-in
-

Participant
Elizabeth Belmore

Positions
Moose River Gold Mines Museum Society (Director), Save Caribou

Contact
bettybelmore@gmail.com

Invited
Yes

Present
Yes

Initiator

Stand-in
-

Participant
Jesse Macdonald

Positions
Maritime Aboriginal People's Council (Habitat and Impact Assessment Manager)

Contact
<https://www.linkedin.com/in/jesse-macdonald/>

Invited
Yes

Present
Yes

Initiator

Stand-in
-

Participant
Madeline Conacher

Positions
-

Contact
conacher.allen@gmail.com

Invited
Yes

Present
Yes

Initiator

Stand-in
-

Participant
Kathy Didkowsky

Positions
Save Caribou

Contact
kathy@spiritadventure.com

Invited
Yes

Present
Yes

Initiator

Stand-in
-

Participant
Mark Snyder

Positions
-

Contact
terrifirma@hotmail.ca

Invited
Yes

Present
Yes

Initiator

Stand-in
-

Participant
Glenda Burrows

Positions
Icelandic Memorial Society of Nova Scotia (Chair)

Contact
glendaburrows@eastlink.ca

Invited
Yes

Present
Yes

Initiator

Stand-in

-

Participant
Joan Baxter

Positions
-

Contact
(902)-657-2042

Invited
Yes

Present
Yes

Initiator

Stand-in
-

Participant
James Millard

Positions
-

Contact
jmillard@atlanticgoldcorporation.com

Present
Yes

Initiator

Stand-in
-

Participant
Craig Hudson

Positions
-

Contact
craig.hudson@atlanticgold.ca

Present
Yes

Initiator

Stand-in
-

Participant
Brenna Reynolds

Positions
-

Contact
brenna.reynolds@atlanticgold.ca

Present
Yes

Initiator

Stand-in
-

Participant
Barb Bryden

Positions
-

Contact
barb.bryden@atlanticgold.ca

Present
Yes

Initiator

Stand-in
-

Participant
Dustin O'Leary

Positions
-

Contact
doleary@atlanticgoldcorporation.com

Present
Yes

Initiator

Stand-in
-

ACTIONS HISTORY

Action history (1)

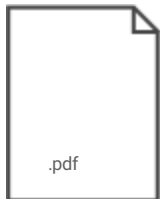
Action	Date and time	User
Created	2021-05-31 04:05 PM	Chrystal Fuller

DOCUMENTS

Documents (2)

- Betty Belmore
- Jesse MacDonald
- Elizabeth Illingworth
- Madeline Conacher
- Kathy Didkowsky
- Verna Higgins
- Joan Baxter
- Lorne Grant
- Robert Tilden
- Kathryn Anderson
- Mark Snyder
- An Nguyen
- Mimi O'Handley
- Surbhi Sharma
- Glenda Burrows

File name	image_1622551638648.png
Creation user	Chrystal Fuller
Creation date	2021-06-01 09:47 AM
Last modification user	Chrystal Fuller
Last modification date	2021-06-01 09:47 AM



File name	EA Presentation - Final.pdf
Creation user	Chrystal Fuller
Creation date	2021-05-31 04:05 PM
Last modification user	Chrystal Fuller
Last modification date	2021-05-31 04:05 PM