

AR 2004 - 047

REPORT ON PROSPECTING
WINE HARBOUR CLAIMS GROUP

11F/4B

GUYSBOROUGH COUNTY NOVA SCOTIA

LICENSE 05115

01/01/04
MAY 12 10 00 AM '04
MAY 12 10 00 AM '04

TED. MACNAUGHTON

17 FEBRUARY 2004

DUPLICATE AVAILABLE

TABLE OF CONTENTS

SUMMARY	Page 1
INTRODUCTION	Page 1
LOCATION AND ACCESS	Page 1
LICENSE TABULATION	Page 1
WORK PERFORMED	Page 2
CONCLUSIONS AND RECOMMENDATIONS	Page 2
BIBLIOGRAPHY	Page 3

✓ Figure 3 in Pocket
MTG

LIST OF FIGURES

FIGURE 1 ✓ WORK LOCATION MAP

FIGURE 2 ✓ CLAIMS MAP

FIGURE 3 ✓ 1996 BERICHOIS PT. CHANNEL SAMPLE MAP (in pocket)

MMZ

SUMMARY:

The work program at Wine Harbour consisted of weighing, panning and re-bagging channel samples assayed by Royal Oak Mines Ltd. in 1995. 100 of these samples were weighed, panned and re-bagged and 17 were sent to be assayed. It was felt the first assayed had problems as visible gold was found in some of the veins which were assayed and showed no gold. Three samples WH2, WH3, WH4, were collected from large quartz boulders 100m west of Berichois Brook and 10m north of the highway.(Fig1) A sample, WH4, was collected from an exposed veining system 30m south of the highway and 20m west of Berichois Brook.(Fig1) These samples were assayed at Actlabs in Arizona, The Royal Oak samples were assayed at SGB Mineral Services 1885 Leslie St., Toronto Ont. Results are attached to this report.

INTRODUCTION:

The re-assaying of some of the Royal Oak samples were done as it was felt the original assays were not done well. Some of the veins showed visible gold and this did not show in the assay results. The assays taken from the large quartz boulders were assayed to see if these boulders contained gold.

LOCATION AND ACCESS:

The claims group cover the east end of the Wine Harbour Gold District in the village of Wine Harbour, Guysborough Co. which is about 18 kilometres along the shore road east of Sherbrook. The work area is accessible by the Wine Harbour Rd. running through the claims.

LICENSE TABULATION:

The MacNaughton claims (Fig2) consist of ten contiguous claims held under license # 05115 dated Feb. 17, 2003.

Map 11F4B	Tract 68	Claims---G H J K
	Tract 69	Claims---E F G H L M

WORK PERFORMED

Bags of crushed material returned from Royal Oak Mines, from a 1995 work program done at Berichois Point and reported in 1996 assessment report for licence #02529 were weighed and re-bagged. The channel samples were qtz. veins, slate and greywacke. Seventeen of these samples were panned and the heavy metal concentrates were sent to SGS in Toronto Ontario for assay. Results of assays are shown on (SGS assay result) sheet and on (1996 chip sample results) sheet. Moss was stripped from large quartz boulders 100m west of Berichois Brook and 10m north of the highway. Samples of these boulders were taken for assay. Samples were taken for assay from a 1m wide exposed veining system 30m south of the highway and 20m west of Berichois Brook. (Fig 1) The system consists of six 1" to 3" quartz veins in greywacke. These samples were assayed and the results are on Aclabs Inc. "Report of Analysis" in the back of this report.

CONCLUSIONS AND RECOMMENDATIONS

The area north of the large quartz boulders should be explored more and trenching done to try and find the source of the large boulders. These boulders appear to be much larger than any veins reported in old mining reports and may have come from the north anticline. Over burden to the north is reported to be very deep and drilling may be the only way to find the source of these boulders.

BIBLIOGRAPHY:

Name: Ted MacNaughton
75 MacNaughton Road
R.R.2, Pictou, N.S.
B0K 1H0

I have been a prospector in Nova Scotia since 1993.

I took a prospecting course in Stellarton, Nova Scotia in the spring of 1993 and an advanced course in Middle Musquodoboit in the fall of 1993.

I have worked with experienced prospectors and geologists.

I am a member of the P.D.A.C. and have been an exhibiter at the convention several times since 1995.

I am a member of the board of directors of the Nova Scotia Prospectors Association.

Yours truly:

Ted. MacNaughton

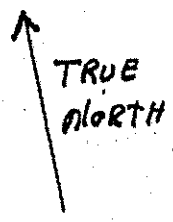
FIG #1

MAP OF WORK AREA

FEBRUARY 17 2004

LICENCE #05115 TRACT 69

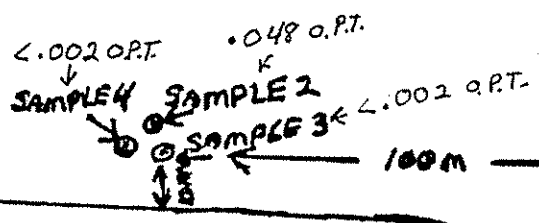
45° 50' 35" N. LAT. 61° 50' 37" W. LONG.



RUDE Hill

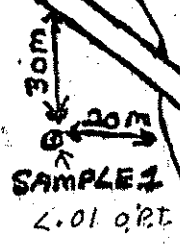
BERICHOIS BROOK

WOOD ROAD

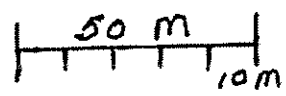


WINE HARBOUR RD.

CAMP



○ - SAMPLES



BERICHOIS HARBOUR

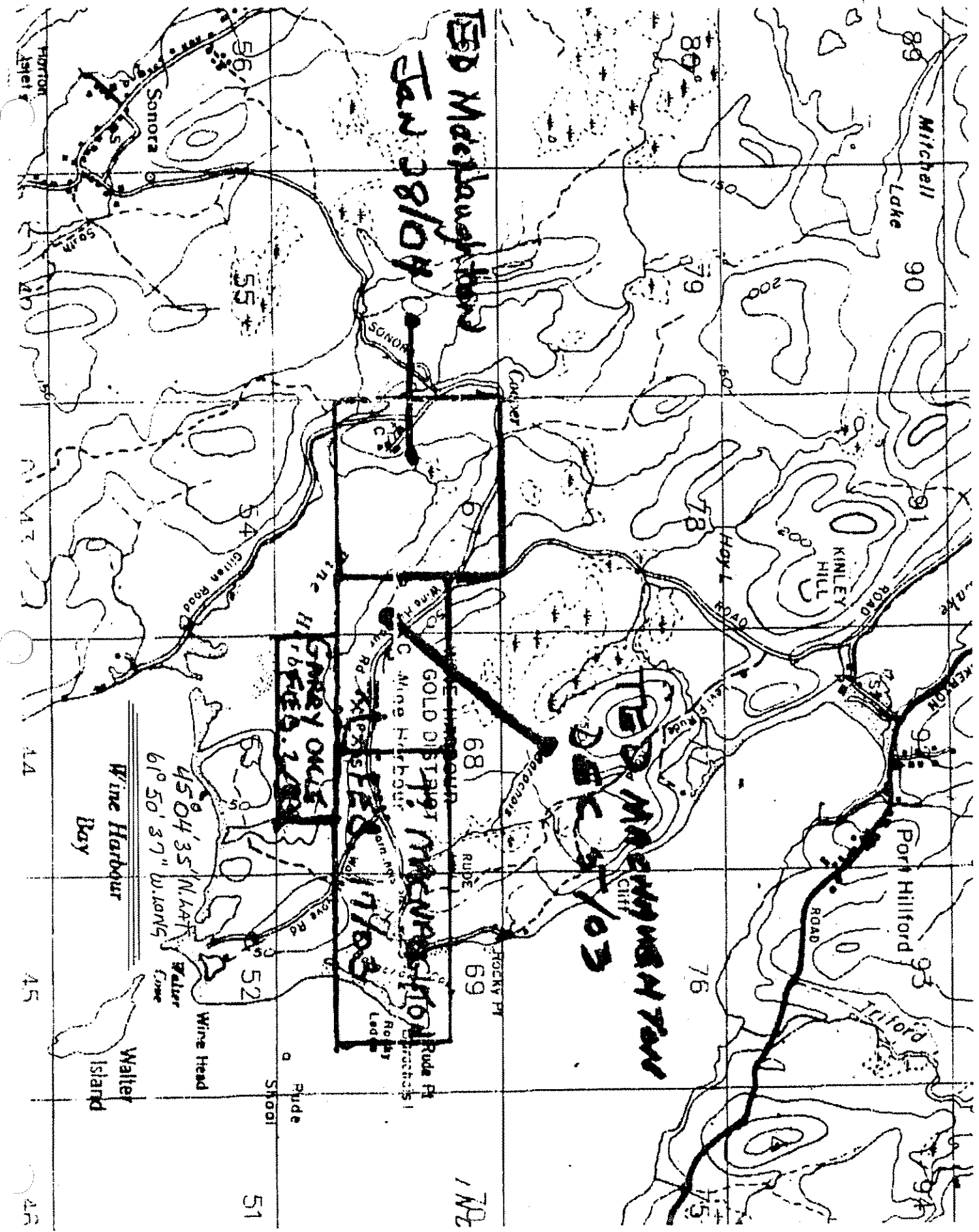


FIG # 2

Wine Harbour, N.S.
1996 Chip Sample Results

Sample #	Width	g.p.t.
1	0.700	0.003
2	1.000	*
3	0.750	0.005
4	0.270	<0.001
5	0.370	<0.001
6	0.300	<0.001
7	1.000	*
8	0.790	<0.001
9	0.730	<0.001
10	0.650	0.002
11	0.200	0.002
12	0.070	0.053
13	0.810	<0.001
14	1.000	0.002
15	1.000	<0.001
16	0.120	0.001
17	0.780	<0.001
18	0.700	<0.001
19	0.150	0.009
20	0.320	<0.001
21	0.480	<0.001
22	0.310	<0.001
23	0.820	<0.001
24	0.150	0.004
25	0.350	<0.001
26	0.740	<0.001
27	0.050	0.103
27	1.000	<0.001
28	-0.082	Lost
29	0.150	<0.001
30	1.170	<0.001
31	0.920	<0.001
32	0.730	<0.001
33	0.400	<0.001
34	0.310	<0.001
35	0.800	<0.001
Low Tide Vein #1	1.100	<0.001
Low Tide Vein #2	1.100	<0.001
36	1.150	<0.001
37	0.280	<0.001
38	0.500	<0.001
39	1.000	<0.001
39W	1.500	<0.001
40	1.000	<0.001
40 West	0.030	<0.001
41	0.100	0.002
41 East	0.200	<0.001
41 West	0.570	<0.001
42	0.120	<0.001
42 east	0.200	<0.001
42 west	0.050	0.002
43	0.140	0.008
43 east	0.100	<0.001
43W	0.07	<0.001
43 W	0.500	<0.001
44W	0.3	<0.001
45	0.010	<0.001
46	1.240	<0.001
47	0.570	<0.001
48	0.400	<0.001
49	0.800	<0.001
50	0.550	<0.001
51	0.780	<0.001
52	0.320	<0.001
53	0.140	<0.001
54	0.150	<0.001
55	1.000	<0.001
56	0.700	<0.001
57	0.840	<0.001
58	0.950	<0.001
59	0.180	<0.001
60	0.080	<0.001
61	0.440	<0.001
62	0.630	<0.001
63	0.050	<0.001
64	0.390	<0.001
65	0.700	<0.001
66	0.180	<0.001
67	0.130	<0.001
68	0.080	<0.001
69	0.850	<0.001
70	1.570	<0.001
71	0.140	<0.001
72	0.550	<0.001
73	0.210	<0.001
74	0.850	<0.001
75	0.100	<0.001
76	0.200	<0.001
77	0.160	<0.001
78	0.780	<0.001
79	0.050	0.001
80	0.620	<0.001
81	0.290	<0.001
82	0.710	<0.001
83	0.030	3.84
84	1.230	<0.001
85	1.300	0.014
86	0.075	<0.001
87	0.075	0.002
88	0.002	0.031
89	0.500	<0.001
90	0.380	<0.001
91	0.320	<0.001
92	1.250	<0.001
93	0.980	<0.001
94	0.620	<0.001
PH Vn #2		<0.001
PH	0.240	<0.001

12	1.00	0.003
12	1.00	<0.001

* The lab apparently had trouble reading the labels on the bags and so reported results for #12 three times: one of these must be #2 and one must be #7, but there is no way of determining which is which at this point.

2004
RE-ASSAY
RESULTS

<0.001
0.002
0.257
0.040
0.045
0.041
0.005
0.009

70 Bag 2	<0.001
----------	--------

0.001
<0.001
0.001
<0.001
<0.001
<0.001
<0.001
<0.001
0.002
0.003

* RE-ASSAYED
CHANNEL SAMPLES



1995 SAMPLES
RE-ASSAY

Work Order: 076371

Date: 03/03/04

FINAL

Element. Method. Det. Lim. Units.	Atoz FA15 0.001 oz/t
WHS-41E	0.257
WHS-42E	0.045
*Blk BLANK	<0.001 ←
WHS-43E	0.005
S-40	<0.001
S-41	0.002
S-42	0.040
S-43	0.041
S-45	0.009
S-71	0.001
S-72	<0.001
S-73	0.001
S-74	<0.001
S-75	<0.001
S-76	<0.001
S-77	<0.001
*Std OX8	0.005
S-78	0.002
S-79	0.003
*Dup WHS-41E	I.S. ✓
*Dup S-75	IS

ACTLABS, INC.

ACTLABS-SKYLINE

FAX: from Frank Nelson to Ted Macnaughton

REPORT OF ANALYSIS

JOB NO. XST 015
July 16, 2003
CH-1, WH-1
PAGE 1 OF 1

AVEN ASSOCIATES LLC
Attn.: Mr. Frank Nelson
7400 N. Oracle #301
Tucson, AZ 85704

Analysis of 2 Rock Chip Samples

FIRE ASSAY

ITEM	SAMPLE NO.	Au* (ppb)	Ag (%)
1	CH-1	115.	.27
2	WH-1	<5.	<.01

Wine Harbour
Qtz outcrop
(WH-1)
Collected
June 08 '03

*NOTE: Method of analysis by combination
fire assay and atomic absorption.



ACTLABS, INC.

ACTLABS-SKYLINE

FAX: From Frank Nelson To: Ted Mac Naughton

REPORT OF ANALYSIS

JOB NO. XST 017
 August 26, 2003
 PAGE 1 OF 1

AVEN ASSOCIATES
 Attn: Mr. Steve Van Nort
 7400 N. Oracle #362
 Tucson, AZ 85704

Analysis of 13 Rock Chip Samples

ITEM	SAMPLE NUMBER	FIRE ASSAY		FIRE ASSAY	
		Au (oz/t)	Au (oz/t)	Au* (ppb)	As (%)
<i>Five Harbours (WH 2, 3, 4)</i>	1	WH-2	.048	.073	.31
	2	WH-3	<.002		.81
	3	WH-4	<.002		.39
	4	TNG-1	.099	.154	.48
5	110703-1			20.	
6	120703-1			45.	
7	120703-3			10.	
8	140703-4			20.	
9	150703-1			15.	
10	150703-5			15.	
11	160703-1			15.	
12	160703-2			25.	
13	160703-3			10.	

*Outcrop of
Saddle-leaf*

*NOTE: Method of analysis by combination
 fire assay and atomic absorption.

Bernie Dunn
 Manager

1775 W. Sahara Dr., P.O. Box 86670, Tucson, AZ 85754
 William L. Lehmbeck
 Arizona Registered Assayer No. 9425

Bernard J. Dunn
 Arizona Registered Assayer No. 36447

Tel (520) 622-4838

Fax (520) 622-6065

James A. Martin
 Arizona Registered Assayer No. 11122

STATEMENT OF ASSESSMENT WORK EXPENDITURES

(N.B. Complete as necessary to substantiate the total claimed)

RE: EXPLORATION LICENCE NO. 05115 DATE OF ISSUE FEB 17/03

Table with columns for Type of Work, AMOUNT SPENT, and units. Includes items like Prospecting, Geological mapping, Trenching/Stripping/Refilling, Assaying & whole rock analysis, Other laboratory, Grid, Geophysical Surveys (Airborne and Ground), Geochemical Surveys, and Drilling.

MAY 12 11 00 AM '04

OVERHEAD COSTS

Table for overhead costs with rows for Secretarial Services, Drafting Services, Office Expenses, Field Supplies, Compensation Paid to Landowners, Legal Fees, and Other (describe) TRAVEL.

I hereby certify that the above information is true and correct and that it has not before been submitted for assessment work credit.

As LICENSEE I am duly authorized to make this certification. (Position in Company or Licensee)

DATED AT PICTOU in the Province of NOVA SCOTIA.

this 8 day of MAY 2004.

Name and Address of Licensee: TED Mac NAUGHTON 75 Mac NAUGHTON RD. RR2 PICTOU, N.S. BOKING

Signature Ted MacNaughton

BARACHOIS COVE

SHORE LINE

NORTH

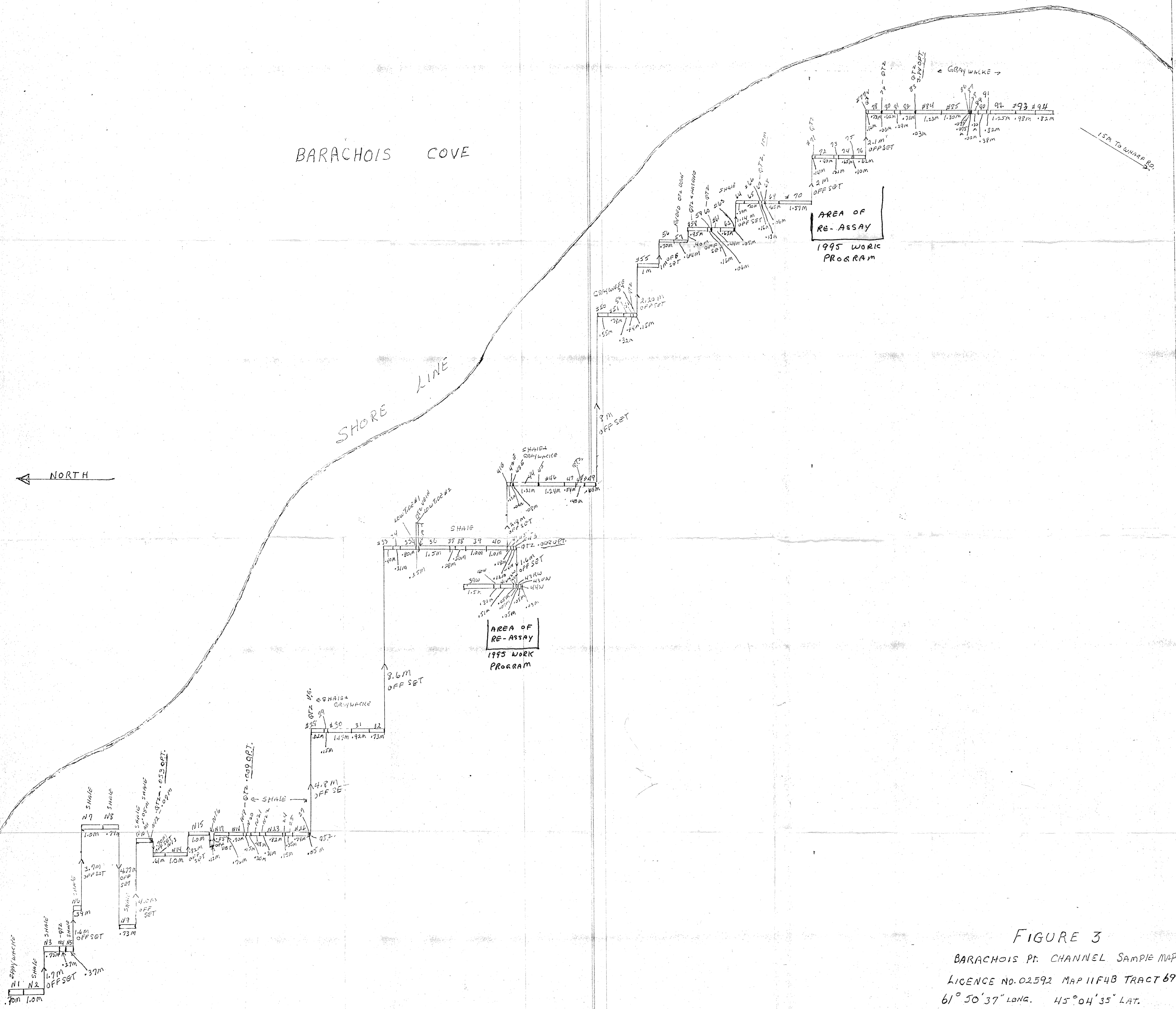


FIGURE 3

BARACHOIS PT. CHANNEL SAMPLE MAP
LICENCE NO. 02592 MAP 11F4B TRACT 89
61° 50' 37" LONG. 45° 04' 35" LAT.

SCALE 1:100
1m 1m 1m 1m 1m