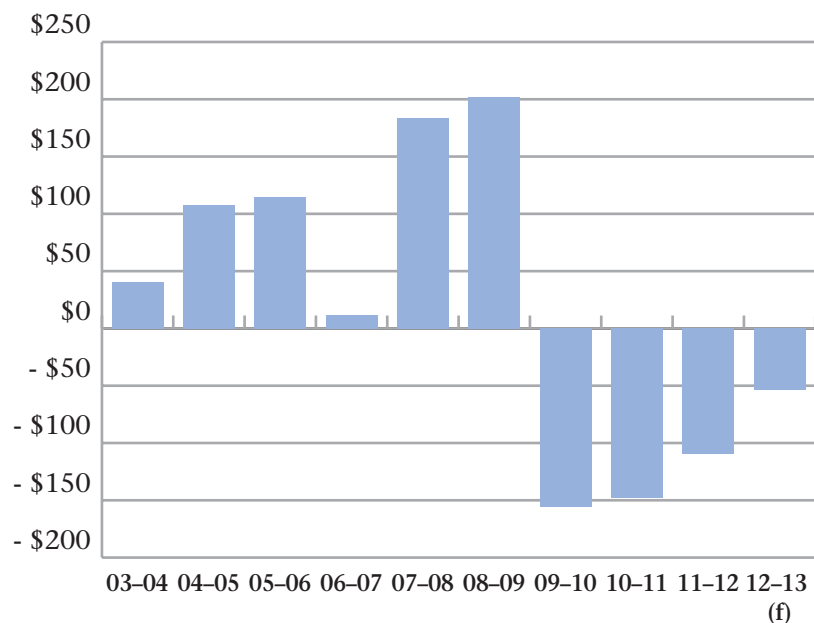




## Controlling Spending

For the fourth year in a row, departmental spending is under budget, thanks to strong budget management from departments, school boards, and health authorities throughout the year.

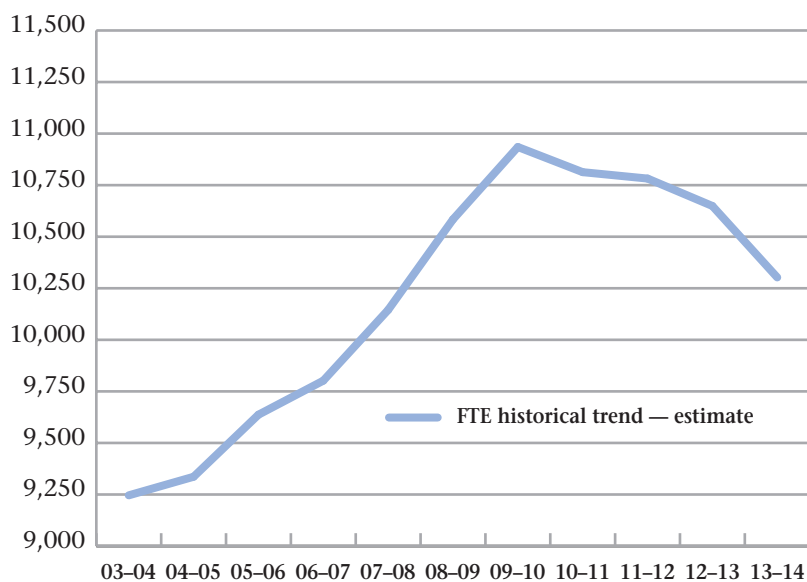
### Departmental Over/Underspending (millions)



\*Source: *Public Accounts and 2013–14 Provincial Estimates Book*

Departmental spending grew at an average annual rate of 6.6 per cent from fiscal 2000–2001 to fiscal 2009–2010. Over the last four years, the average annual growth rate in spending has been held virtually flat at 0.9 per cent and year-over-year spending will decline by 1.6 per cent in fiscal 2013–2014.

### Historical Trend — Full-time Equivalents



\*Source: *Provincial Estimates Books*