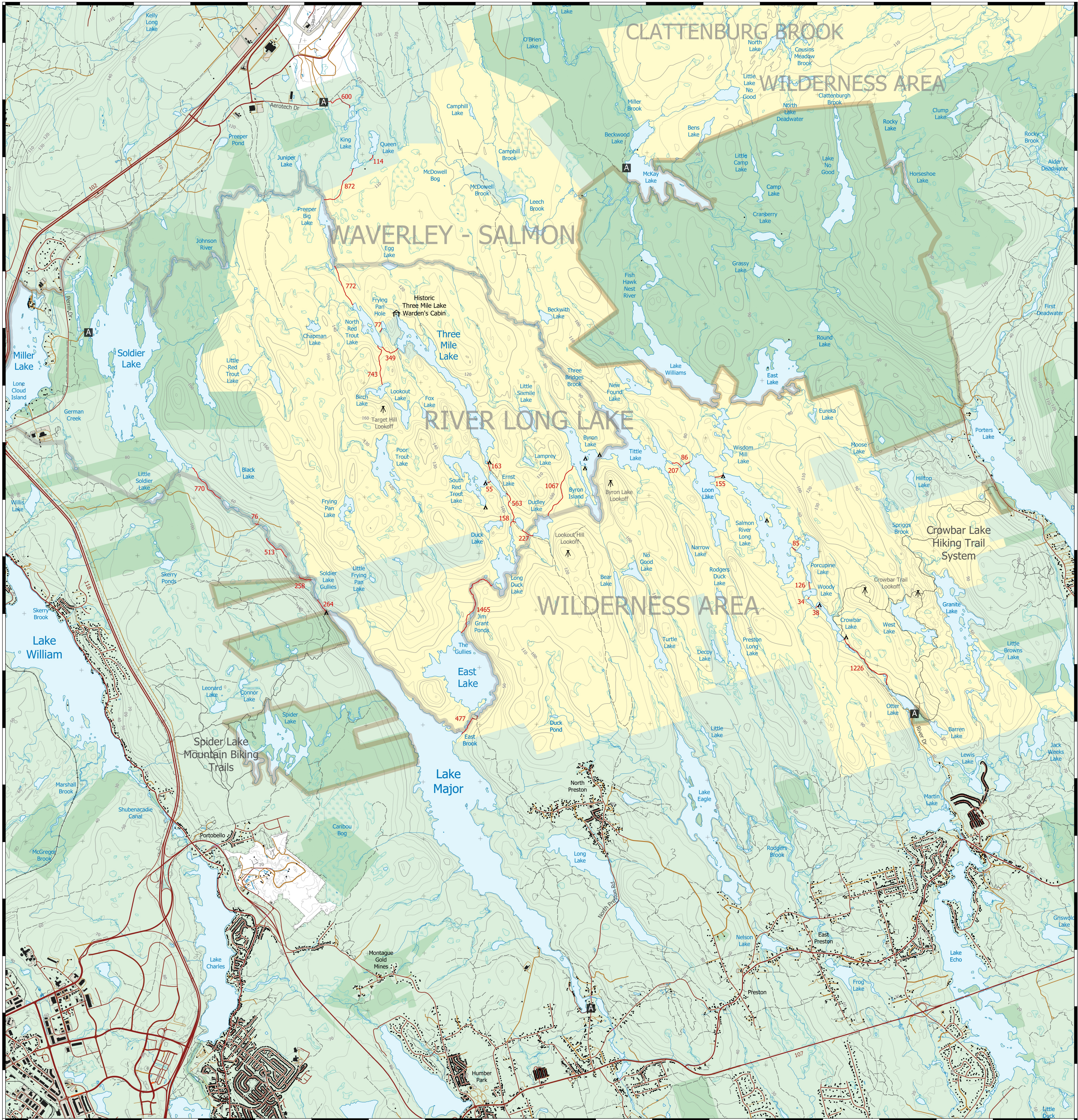


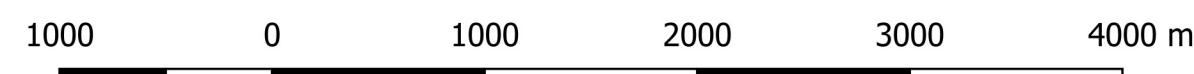
NOVA SCOTIA CANOE ROUTES: WAVERLEY - SALMON RIVER LONG LAKE WILDERNESS AREA



- A Access
- ▲ Campspot
- ▲ Lookout
- ⌄ Wilderness Cabin
- Crown Land
- Private Land
- Wilderness Area
- Proposed Wilderness Area Addition
- Wildlife Management Area Boundary
- Portage (Metres)
- Hiking Trail
- Track
- Loose Surface Road
- Hard Surface Road

WAVERLEY - SALMON RIVER LONG LAKE WILDERNESS AREA

WILDERNESS CANOE ROUTES
HALIFAX REGIONAL MUNICIPALITY, NOVA SCOTIA

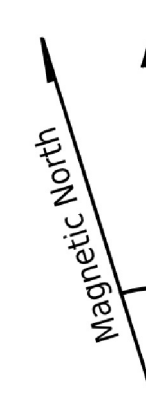


1:50000

1 centimetre on the map represents 500 metres on the ground

Contour Interval: 10 Metres

True North



Magnetic Declination:
17.22° W
(306 Mils)

Not all campspots have been marked. Please use established sites where they exist, and practice no trace camping.

Large lakes can be hazardous when the wind picks up. Use caution when crossing large bodies of water, and be prepared to wait for better weather.

The portages (carries) are unmaintained, can be difficult to find and follow, and are not always marked. Be prepared to navigate through dense brush and fallen trees.

What we do while participating in outdoor activities will determine how wilderness areas will look and function in the future. Tread lightly and always follow the Leave No Trace Principles.

The Three Mile Lake Warden's Cabin is a well loved cultural site. Respectful use of the cabin will ensure that wilderness travelers can continue to enjoy it for many years to come.

Wilderness Areas are administered by Nova Scotia Environment. For more information visit: www.novascotia.ca/nse/protectedareas or call 902-424-3600

Map produced by Tristan Glen, 2019. Tristan Glen accepts no liability for any errors or omissions contained within the map. For information regarding this map, contact glen.tristan@gmail.com